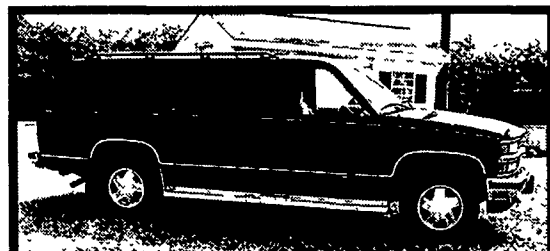




1995 F-800, 5.9 Cummins, 6 spd., A/C, 26,000 GVW, 16 ft. body, 3,000 lb. liftgate, 148,000 miles, VG cond.
\$10,500 (717)367-2052



96 Chevy Suburban LS, 4x4, Loaded, 100,000 Miles, Runs Ex.
\$9,800/OBO
717-369-4115

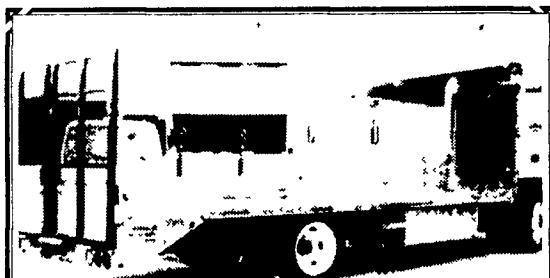
1968 Mack Truck Tandem w/Prentice F-90 Log Loader and 342 Grapple. Good Condition.

1988 - 32000 Hood Log Loader. Hood Grapple. Joystick controls. 4 Stabilizers, 30ft Boom, Slasher Package. Ctr 40 Slasher (Short Bead) Motor rebuilt spring 2000

1978 - 142 Franklin Log Skidder, H-32 Winch. 18.4 - 26 Tires. 453 Detroit Engine. New Motor approx 4 years ago.

717/873-2880

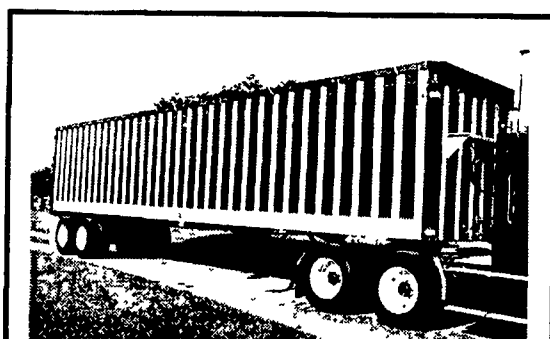
Leave message if no answer. Will consider all reasonable offers.



Landscaper

all aluminum flat bed 13' with 4' beavertail with spring loaded ramps, 2 underbody tool boxes, roll up meshtarp trailer hitch, used as mowing trk

814/ 793-3923
\$6,500 obo



2000 IMCO Live Floor Trailer, 42'x 12'3" plus 6" arch x 96" Keith RFIH with 1/8" decking, air ride, aluminum wheels, black aluminum panels, black tarp, arched doors, weight 12,620 lbs NICE TRAILER! Located in Maryland
Call TOLL FREE 1-888-496-4626



1997 Centerville Tandem Equip Trailer, 5th wheel, airbrakes, 26,000 GVW, 32 ft overall length, 20 ft flat deck, 4 ft dove tail, 5 ft ramps, never been used, excellent condition, original owner. **\$9,500 obo.**

Call Jeff
Day: 443-243-0484
Night: 410-836-1672



Freightliner of Harrisburg

TEST IT NOW.

www.sprintervans.net

TIME TO TAKE A TEST DRIVE.

Ray Manno - (800) 871-1935
 Freightliner of Harrisburg / 4400 Chambers Hill Road / Harrisburg, PA 17111
 Rick Stetler - (800) 769-9887
 Freightliner of Lancaster / 1675 Rohrerstown Road / Lancaster, PA 17601
 Scott Shoemaker - (888) 200-2229
 Freightliner of Hagerstown / 11611 Hopewell Road / Hagerstown, MD 21740
 Rich Horner - (866) 788-8587
 Freightliner of Philadelphia / 2720 Bartram Road / Bristol, PA 19007



©2002 DaimlerChrysler Vans LLC



131 Kline Rd., Bethel, PA 19507
 We're Located Right On I78 @ Exit 17

WE BUY TRUCKS!

717-933-9792

Fax 933-9782 www.besttrucks.net

<p>1988 Ford F700 3 Yard Heil Dump, Diesel 6.6L, 170hp Automatic, 169K Miles, 22,500 GVW Hydraulic Brakes White Steel Body \$9,500 JVA50520</p>	<p>1997 Freightliner FLD12042ST Single Axle Daycab, Detroit 12.7 400hp (Can go 470hp) 10 speed 273K Miles, Red Air Ride Jake Brake 3.90 Rears 166 Wheel Base \$22,500 VL755967</p>	<p>1997 Freightliner FL60 24' Van, Cummins 5.9 190hp Allison Automatic, 135K Miles White AC Roll Up Rear Door, 25,500 GVW, Hydraulic Brakes \$16,500 VL659935</p>	<p>1991-1992 Eldorado & Gillig 18-25 Passenger buses, Catpillar & Cummins Engines, Allison Automatic, ave 200K miles, Some parts buses, \$6,000 & Down! M2090197</p>	<p>2000 Ford F650 10' Dump Cummins Power Stroke 7.3 270hp 6 speed 33K miles Red Automatic Tarp Heavy duty Pintle hitch 33,000 GVW, AC OX Dump body \$31,500 YMA76816</p>
<p>1998 Union City 10' Step Van 5.7 V8 Gas Automatic 66K Miles Air Conditioning 14 100 GVW Passenger Seat Ladder Racks Shelving Roof Walkway Crank Windows New Brakes Xtra Leaf Springs Added CLFAN! \$13,900 w3500516</p>	<p>1997 Freightliner FLD12042ST, Detroit 11 1 330 HP RTX 9 Speed 396K Miles White Jake Brake Cruise AC Spring Suspension Former Lease Truck \$15,750 VL812811</p>	<p>1999 IHC 4700 24' Van Diesel T444 130K Miles Allison Automatic 25,500 GVW Hydraulic Brakes AC Ramp Bill Hitch NO RUST VERY CLEAN! \$18,900 VH569869</p>	<p>1989 IHC 1754 Crew Cab 10' Dump, DT360-185hp, 5/2 Speed, 156K Miles 31,000 GVW, Air Brakes, Red \$9,900 KH609195</p>	<p>1997 IHC 4700 26' Van T444-230hp 6 Speed, 267K Miles 33,000 GVW, Air Brakes AC Lift Gate \$12,500 VH402757</p>
<p>1994 IHC4700LP 14' Cold Plate, DT408 190hp (Jasper R. Min) 6 speed 202K miles AC 25500K GVW Hydraulic brakes White & Green \$11,500 RH590140</p>	<p>(3) 1996 ELF 125 Cutaway 14 Passenger buses, Ave 200K miles, Powersroke Diesel, Allison Automatic, F350 Chassis, Low Floor ADA White \$8,500 THB60179</p>	<p>1999 GMC 3500HD 10 Dump, Gas Automatic 21K Miles White AC 15000 GVW Mason Dump Fold Down Sides, Bench Seat \$19,500 XF039199</p>	<p>1996 Volvo WG64T, Detroit SR60, 11 1-350 HP, 9 Speed, Air Ride, 250K Miles White Jake Brake, 4 10 Ratio, Approx 170" Wheel Base \$15,000 TR851316</p>	<p>1998 IHC 4900 22' Reefer, Just Overhauled! DT466 190hp 6-1 Transmission 245K Miles Hydraulic Brakes AC White Elect Standby Corner Roll Up Door Extruded Floor \$17,900 WH520470</p>
<p>1993 WIA64TES, Cummins N14-430HP, 9 Speed 643K Miles Wet Line 50% Virgin Tires White Air Ride \$8,500 PN650912</p>	<p>1996 IHC 9200 51' Pro Sleepers, Cummins M11 330E 9 Speed, 1 Million Miles Jake Brake 2 Alum Wheels Air Ride White \$8,500 TC014804</p>	<p>1998 KW T600B 62 AeroCab CAT 3406E 435hp 10 Speed 439K Miles Blue 2 Alum Wheels 222 Wheel Base AC Sunroof Lease Maintained \$26,500 WJ790496</p>	<p>(3) 1999 Freightliner FLD 12064ST 70' Condo's, Cat 12 410hp 10 Speed Air Ride Ave 570K Miles Gray Double Bunk, Alum Steers AC Jake Brake \$20,900 ea. XL988131</p>	<p>2000 Chevrolet 1500 Panel Van, 4.3L Gas Automatic 84K Miles, AC White 7 100 GVW, Tool Bins and Drawers, Swing Rear & Side Doors w/Windows \$9,750 82656</p>
<p>1997 Western Star 4964EX, 60" Hi Rise Removable Sleeper, CAT 3406-55hp 18 Speed 592K Miles Dual Chrome Stack, Mazon 10 Alum Wheels, 40% Virgin Tires New Clutch \$29,900 VK994125</p>	<p>1995 8100 Modular Home Toter, Cummins M11 330hp, 9 Speed, Jake Brake, 144" Wheel Base, Air Ride, 700's K Miles White, \$9,900 SH216628</p>	<p>1997 FTL FL70 24' Cab & Chassis, 3126-190hp, 6 Speed, 26,000 GVW, Air Brakes, 157 Miles, White, AC, Came In On Trade \$14,500 VH696724</p>	<p>(2) 1998 FTL FLD12042ST 48' Condos, Detroit SR60 11 1-350HP, 9 Speed 610K Miles, Blue, Air Ride, Double Bunk Stationary 5th No Jake Brake AC \$15,750 WL885809/804</p>	<p>1998 IHC 8100 24' Van, Cummins M11-280hp, 9 Speed, 460K Miles, White, 33,000 GVW, AC, Spring Suspension \$19,000 WH528227</p>
<p>1999 4700LP 10' Dump, Diesel 190hp Allison AT545 Automatic 102K miles White AC AIRFLOW Dump body 25500 GVW Hydraulic brakes \$26,500 XH675099</p>	<p>1999 Pete 379 EXH, 63 Hi Rise Sleeper, CAT 3406-475hp 13 Speed 342K Miles 3 Way PTO/Wet Line American Class Interior 3.58 Rears Approx 250 Wheel Base 6 Alum Wheels \$49,900 XD477864</p>	<p>1996 FL70 24' Flat Bed, Cummins 8.3 250hp 6 Speed 167K Miles 33000 GVW Air Brakes AC 24 Covered Wagon Railgate Green Spring Suspension \$14,500 TL638633</p>	<p>1999 Isuzu NPR 9' Dump, DSL 175hp, 5 speed 84K miles White 14500 GVW Spring ride ROOM FOR TOOL BOX! \$17,500 X7015656</p>	



"Bid on our trucks at:" www.truck-network.com