

U. S. Sheep and Lamb Numbers Down 4 Percent From Year Ago

WASHINGTON, D.C. — All sheep and lamb inventory in the United States on July 1, 2003, totaled 7.80 million head, 4 percent below July 1, 2002, according to the National Agricultural Statistics Service (NASS).

• Breeding sheep inventory declined to 4.61 million head on July 1, 2003, was 4 percent below July 1, 2002.

• Market sheep and lambs (including newborn lambs) at 3.19 million head, were 4 percent below last July.

The breeding herd consists of 3.84 million ewes one year old and older, 175,000 rams one year old and older, and 600,000 replacement lambs (including newborn lambs).

Market lambs by weight groups, July 1, 2003: Under 65 lbs - 1,845,000 head; 65-84 lbs - 660,000 head; 85-15 lbs - 375,000 head; over 105 lbs - 250,000 head. Total: 3,130,000 head.

2003 Lamb Crop

The 2003 Lamb Crop in the United States is expected to total 4.13 million head, down 5 percent from the 2002 lamb crop of 4.36 million head.

Lambs born during January through June 2003 totaled 3.68 million head or 89 percent of the yearly total.

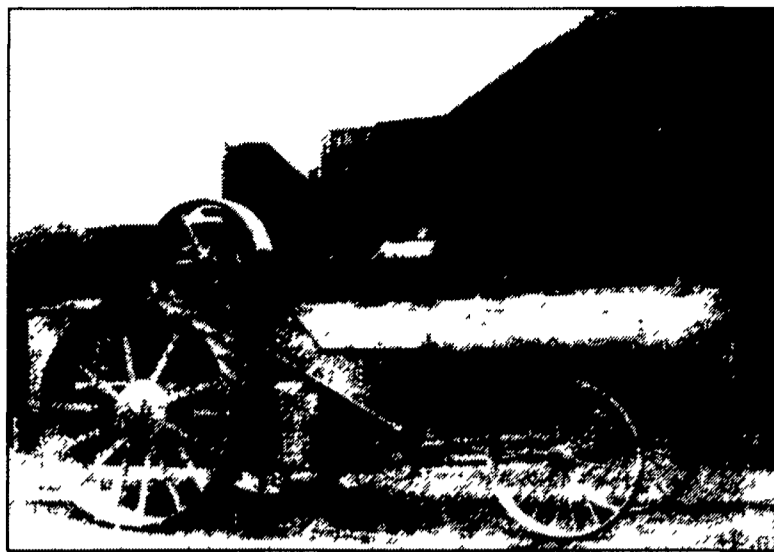
An additional 450,000 head are expected to be born during the period July through December 2003.

Eastern Shore Threshermen Showcase Frick Company's 150 Years Of History

FEDERALSBURG, Md. — The Eastern Shore Threshermen and Collectors Association, Inc. is conducting their 43rd annual Wheat Threshing, Steam, and Gas Engine Show this weekend at their showgrounds located on Rt. 313 between Denton and Federalsburg, Md. The show features free admission and free parking.

This year's show will have a special display of Frick equipment. 2003 marks the 150th anniversary of the Frick Company of Waynesboro.

George Frick started the company in 1853 near Ringgold, Md., building stream engines and horsepower to power the many



Factory photo of Frick traction engine c1915. Photo courtesy of Frick Co.

mills in the area as well as threshers under the patents of Peter Geiser.

Due to increasing business, he moved his shop to Waynesboro.

Along with steam engines, they also built sawmills, gas tractors, threshers, and other equipment, but they are best known for their industrial refrigeration. Now owned by York International, the Frick line of refrigeration equipment is still being built at the same location in Waynesboro that built steam engines since 1881.

This special display, concentrating on the steam and farm lines of Frick's business, has generated a lot of interest from Frick collectors. On display are 15 Frick

steam engines as well as a selection of other Frick equipment. There will be a tent with a large collection of original Frick Company memorabilia from the mid-1800s until today. Many items have never been displayed in public before. Frick-York officials are expected to be on hand for this celebration.

Among the demonstrations will be wheat threshing, single sawing, sawing with a miniature and full size sawmills and rock crushing. There will be steam engines, antique tractors, gas engines, antique cars, and steam models in operation. A daily parade of all equipment will be con-

ducted at 5 p.m. on Friday and Saturday and at 4 p.m. on Sunday.

Kids of all ages enjoy riding "Smokey Joe," a miniature steam train which is a replica of the Civil War era "General" locomotive.

Spectators won't want to miss our "Evolution of Threshing" which will demonstrate how threshing grain evolved from using the flail to the modern day combine. This will be conducted Saturday at 2 p.m.

On Friday evening, "Country Grass" will perform a free bluegrass music show and "The Country Troubadours" will perform traditional country music on Saturday evening. Sunday evening will feature "The Rescue Team" with gospel music at 5 p.m.

Exhibitors of antique tractors and steam engines can test their driving skills in the tractor games where they will be competing for trophies.

For more information call (410) 754-8422 or visit our Website at www.threshermen.org.

Robert Fulton Fire Co

Hay, Straw & Grain Auction
Every Thursday 10 am
Located on the corner of RT 272 & 222 at Wakefield, PA
717-548-2492
717-548-2371

Randall Ranck
Auctioneer 003117-L
Consignments Wanted
No Out of State Checks

Are you ready for a STIHL?

CHAIN SAW
16" Bar
35.2 cc, 2.0bhp, 9.9 lbs.
\$229⁹⁵ SRP

POLE PRUNERS
\$349⁹⁵ SRP

Protective Glasses Included

Available at these servicing dealers

Abbottstown MESSICK'S 7481 Lincoln Hwy. Rte 30E Abbottstown, PA 17301 717-259-6617 888-285-0225	Gap/Quarryville GAP POWER RENTALS >> PLUS Gap: 717-442-8970 Quarryville: 717-786-2221	Schaefferstown MARTIN'S EQUIPMENT CO. Rt. 501, 1/4 Miles South of Schaefferstown, PA 717-949-6817
Allentown LEHIGH AG EQ. INC. 6670 Rupperville Rd 610-398-2553 1-800-779-3616	Hummels Wharf HUMMEL'S TEXACO Rt. 11 & 15 570-743-7459	Shippensburg CEDAR GROVE FARM STORE 1120 Ritner Hwy 717-532-7571
Carlisle TRI-BORO CONSTRUCTION SUPPLIES 1490 RITNER HWY 1-800-248-6590	Palmyra HERR'S REPAIR SHOP RD 2, Box 115A 717-838-1549	Waynesboro QUINCY HARDWARE & RENTAL CENTER 7421 Anthony Hwy. 717-749-3653
Dallastown TRI-BORO CONSTRUCTION SUPPLIES 435 Locust St. 717-248-3095 1-800-632-9018	Peach Bottom A.K. SAW SHOP 214 Peach Bottom Road	Hagerstown, MD EBY'S LAWN & GARDEN 16409 Fairview Road 301-733-4158
East Earl GOODS LAWN & GARDEN CENTER Route 23 717-445-4490	Pequea DREXEL AUTO SUPPLY 333 Stelman Farm Road 717-284-2916	Cockeysville MD SUBURBAN SALES 10757 York Cir. 410-785-2277
Elizabethtown MESSICK'S 187 Merts Drive (Rheems exit of Rt. 283) www.messicks.com 717-367-1319, 800-222-3373	Reamstown EAGLE RENTAL CENTER Rt. 272, Reamstown Traffic Light 717-336-3945	
Ephrata WES STAUFFER ENGINES & EQUIPMENT 23 Pleasant Valley Rd 717-738-4215	Ronks A & B SALES & SERVICE 370 Newport Road 2 Miles South of Rt. 23 Along 772 Thru Monterey	

STIHL
NUMBER ONE WORLDWIDE

DISTRIBUTED BY NORTHEAST STIHL

Agricultural Generators

Detroit Deisel Spectrum

Automatic
L.P Gas, Diesel
Natural Gas Generators
5 to 2,000 KW

Service - Rental - New & Used Units In Stock!

PENN POWER SYSTEMS

Power Generation Systems Specialists
330 Founderwhite Road, Lebanon, PA 17042

Call Leonard Martin 717-273-4544
Fax: 717-273-5186

e-mail: lmartin@pennpowersystems.com

Incredible Prices !!!

UP TO **60% OFF**

SUPER HEAVY STEEL

- Equipment Storage!
- Workshops!

FAST AND SIMPLE TO ERECT!! NO CRANE NEEDED!!

AVAILABLE MODELS

30 x 50 (2 LEFT)	40 x 64 (3 LEFT)
45 x 80 (2 LEFT)	52 x 100 (1 LEFT)
55 x 120 (2 LEFT)	

AMERICAN STEEL SPAN

800/825-5059

EXCELLENT FOR HAY AND GRAIN STORAGE