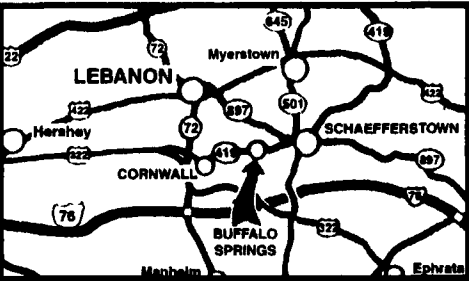


KELLER BROS.

(Buffalo Springs) Lebanon, PA

717-949-2000 or 1-800-363-2767

LEBANON COUNTY'S HEAVY DUTY TRUCK HQTRS.



FAMILY OWNED AND OPERATED FOR OVER 80 YEARS

Over 100 Clean Pre-Owned Vehicles In Stock At All Times!!

2001 FORD F250 CREW CAB 4x4
7.3 Diesel, XLT, AT, A/C, PW, PL
\$31,995



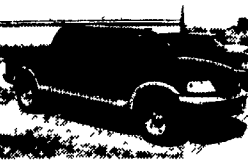
2001 FORD F350 XL Dump Truck
5.4 V8, 5-Spd., AM/FM/Stereo Only 7,000 Miles. Ready to Work
\$25,900



2000 FORD F250 SUPERCAB, 4x4, XLT
7.3 Diesel, 6-Spd., A/C
\$20,550



2001 FORD F150 SUPER CREW
XLT, 4x4, V8, AT, A/C, PW, PL, 37,000 miles
\$23,995



2002 CHEV S-10 CREW CAB
4.3L V6, AT, A/C, PW, PL, 4x4, Local 1-Owner Trade
\$18,995



2001 FORD F150 SUPER CAB LARIAT
4x4, 5.4 V8, AT, A/C, PW, PL, Leather, 21,000 Miles, Fiberglass Cap
Only **\$25,773**



NEW 2003 FORD F350 CREW CAB
V10, AT, Full Power, 4x4 Cab & Chassis Only.
\$28,400



2000 MITSUBISHI MONTERO SPORT
V6, AT, A/C, PW, PL, Leather, CD, 1-Owner, Like New
\$16,975



2001 FORD F150 SUPER CAB XLT
4x4, Off Road Pkg., 5.4 V8, AT, A/C, PW, PL
\$23,335



1995 DODGE RAM 1500
Reg. Cab. 4x4, SLT, V8, AT, PW, PL
\$8,808



2001 FORD SPORT TRAC 4x4
4.0L AT, A/C, PW, PL, Alloy Wheels, Sharp
Only **\$20,773**



2000 FORD F650 BOX TRUCK
Cat Diesel, AT, 24 Ft. Box, Hyd. Lift, 26,000 GVW, Air Brakes, Only 9,000 Miles
REDUCED \$31,921



1997 FORD F150 SUPER CAB
4x2, XLT, 5-Spd., A/C, PW, PL, T.C.
Only **\$9,345**



1998 FORD EXPEDITION 4x4 EDDIE BAUER
V8, A/C, Full Power
\$12,795



2001 FORD RANGER SUPER CAB EDGE
V6, AT, A/C, 4x4, CD Player, 33,000 Miles, Very Clean
\$14,929



2003 FORD E550 CUT AWAY CHASSIS
7.3L Power Stroke Diesel, AT, A/C, PW, P. Seats, Chrome Wheels, MSRP \$37,165
NOW \$29,665 Save \$7,500



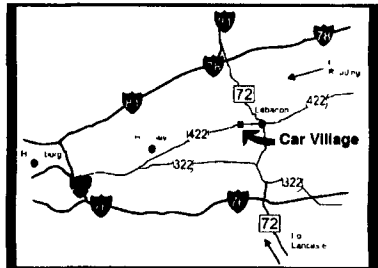
Nicest Trucks In the East • Nicest Trucks In the East • Nicest Trucks In the East • Nicest Trucks In the East • Nicest Trucks In the East • Nicest Trucks In the East

www.useddieseltruck.com

2300 W. CUMBERLAND ST. (Rt. 422)
LEBANON, PA 17042
(Across From Lebanon Valley Mall)

CAR VILLAGE

1-800-650-1420
717-274-2000



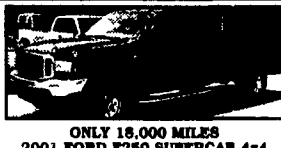
4x4 SUPER CAB SHORTBED
99 FORD F250
Powerstroke Turbo Diesel, 6 Sp., A/C, Vinyl Seat & Floor \$22,900



1 TON PICKUP 4x4
2000 FORD F350
Only 37,000 Miles, Powerstroke Turbo Diesel, AT, A/C, Alloy Wheels



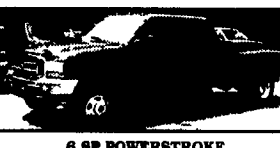
\$12,900
99 CHEVY 2500 SUPER CAB 4x4
6.0 Liter V8, Auto., A/C, All Power Equip., 8 Foot Bed, Alloy Wheels



ONLY 18,000 MILES
2001 FORD F250 SUPERCAB 4x4
Almost New. Loaded XLT, 5.4 Triton V8, Auto, A/C, Loaded XLT, Comfortable 40/20/40 Seat, Limited Slip Axle. Remainder New Warranty



\$10,900
97 DODGE 2500 4x4
Lots of Truck for a Little Money, Heavy Duty 3/4 Ton, 360 V8, Auto., A/C, Tow Pkg., Alloy Wheels



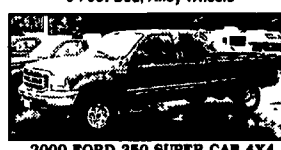
6 SP POWERSTROKE
2000 FORD F350 CREW CAB DUALY
4x4 Gorgeous XLT LARIAT
Powerstroke diesel, Trailer Tow Pkg Alloy Wheels, & Plenty More, Only 38,000 Miles



CUMMINS DIESEL
98 DODGE 2500 QUAD CAB 4x4
24 Valve Cummins Turbo Diesel, Auto, A/C, Laramie SLT Pkg., 46,000 Miles, Very Nice
\$23,900



93 FORD F-250 SUPER CAB 4x4
Very clean, Local Trade, Diesel Power, Auto, AC, Loaded XLT, Tow Pkg, Dual Tanks, You'll like this one



2000 FORD 350 SUPER CAB 4x4
Power Stroke Turbo Diesel, Auto, A/C, Tow Pkg Very Clean Sharp
\$27,900



SHORTBED SUPER CAB
2001 CHEVY 2500 4x4
Nice Driver, Very Clean Duramax Diesel, Allison Auto, Loaded, All Options, Alloy Wheel, Tow Pkg., Limited Slip Axle



5SP CUMMINS
2001 DODGE QUAD CAB 4x4
Real Strong 24 Valve Cummins Turbo Diesel Sep, A/C, Class 3 Hitch, Alloy wheels, Runs strong
Only **\$24,900**



6 SP CUMMINS
2002 DODGE 2500 QUAD CAB 4x4
Very Strong Truck, Loaded, Laramie SLT, A/C, Overhead compass, Remaining Fact. Warranty



Farm Special
88 FORD F250
Heavy 3/4 Ton Diesel Power, Auto
\$4,500



5SP CUMMINS
98 DODGE 2500 4x4 PICKUP
Heavy Duty 3/4 Ton Impressive Cummins Turbo Diesel, A/C, Tow Pkg



4x4 CREW CAB DUALY
2002 FORD F350
Loaded XLT, PowerStroke Turbo Diesel, Auto, A/C, Comfortable 40/20/40 Seat, Alloy Wheels, Fact Tow Pkg. Only 7,700 Miles



2 WHEEL DRIVE
2000 FORD F350 CREW CAB DUALY
Great Lookin Tow Machine, Powerstroke Turbo Diesel, 6 sp, A/C, Leather Seating, Only 55,000 Miles, Alloy Wheels



4 DOOR SHORTBED
2000 FORD F350 XLT 4x4
Nice To Look At & Very Nice To Drive, Powerstroke Turbo., Diesel, Auto, A/C, Loaded XLT, Alloy Wheels, Tow Pkg



HEAVY CHEVY
2001 CHEVY SILVERADO 3500 4 Wheel Drive
Gorgeous - Like New. Only 12,000 Miles Remain New Tk Warranty, 8100 Vortec V8, Auto, A/C, Limited Slip Axle, Very Strong, Great Tow Machine

FLATBEDS, WORK & DUMP TRUCKS



STAKE BODY
99 FORD F350
Very Clean, Only 48,000 Miles, 5.4 Triton V8, 5 Spd., A/C, New Service 7 Insp. Ready to Work.
\$18,900



2003 GMC 4500
16 Foot Steel Flatbed
Only 1,700 Miles, Like New with GMC Warranty, Duramax Diesel Allison Auto, AC, Priced Real Right, \$29,900



17 FOOT CUBE VAN
97 FORD E-450 SUPER DUTY
Heavy 14,000 GVW, Rear Lift Gate, Powerstroke Turbo Diesel, Auto, AC, Local Trade, Only 68,000 Actual Miles



ALUMINUM ROLLBACK
2000 FORD 550 SUPER DUTY
18 Foot Body, Powerstroke Turbo Diesel GSP, Loaded XLT, Heavy 19,000 GVW, Keyless Entry, Tool Boxes, Wheel Lift, Remaining New Tk. Warranty.



4x4 Dump Truck
2000 DODGE 3500
Cummins Turbo Diesel Auto, AC, Only 43,000 Miles, Very Clean Runs Strong



CAB OVER DUMP
98 CHEVY W-4
Only 45,000 Miles, Diesel Power, 5 Sp. Manual, 12 Foot Steel Bed, Only 45,000 Miles



RARE ONE
2002 FORD 550 SUPER CAB 4x4
Great Tow Machine, 9 Foot Bed, Goosneck Hitch, Powerstroke Turbo Diesel, 6 Sp, A/C, Loaded XLT, vinyl floor



DIESEL CARGO VAN
2001 FORD E350 SUPER CARGO VAN
Very Clean inside & Out, Powerstroke, Auto., A/C, Heavy 9,400 GVW, Only 40,000 Miles, Remaining New Tk Warranty



550 CREW CAB
4 Wheel Drive, Rare Find. Made For The Big Loads, Powerstroke Turbo Diesel, Auto, A/C, Eby Aluminum Bed, Goosneck hitch



Equipment Hauler
93 FORD F-450
SUPER DUTY ROLLBACK
Just what you need, 18 Foot Jerr-Dan Bed, Brand new wood floor, Diesel Power, AC, Loaded XLT



SUPER CAB DUMP
2000 FORD F350
A Very Desirable Truck, Clean, Only 65,000 Miles, V10, Auto, A/C, 9 Ft Body Insp & Services
\$21,900



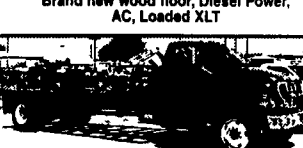
19,000 GVW
2003 FORD E 550 CHASSIS
Like New Only 60 miles Remainder New Tk Warranty Alloy Wheels



350 4 DOOR CHASSIS 4 WHEEL DRIVE.
2001 FORD XLT
Waiting for your Body, Only 19,000 Miles Powerstroke Auto A/C Heavy 11 500 GVW, Dual Ram Wheels



4x4 CHASSIS
2001 DODGE 3500
Short Wheel Base 60 C/A, 24 Valve Cummins Turbo Diesel Auto, A/C, Limited Slip 4 10 Axle



2003 FORD 750 CHASSIS
Only 11,000 Miles, 33,000 GVW, Diesel Power, 7 Sp Trans, A/C, 2 Fuel Tanks Brand New Dealer Cost \$38,900 Our Price \$35,900

Nicest Trucks In the East • Nicest Trucks In the East • Nicest Trucks In the East • Nicest Trucks In the East • Nicest Trucks In the East • Nicest Trucks In the East