

35

**TRUCKS
AND
TRAILERS**

7511 Allentown Blvd.
Harrisburg, PA 17112

**AFFORDABLE
CARS AND TRUCKS, INC.**

717-652-1925
FAX 717-652-4888
Hours: Mon. & Tues. 9-9
Wed. thru Sat. 9-6

**75 TRUCKS
IN STOCK**

"You Gotta Believe!!"

New Exit #72A, Rt. 81 N; Rt. 22 East of Harrisburg; 3 Miles North of Hershey Park

**01 DODGE RAM 2500 4x4 SLT LARAMIE
QUAD DOOR LONGBOX**

Cummins Turbo with Banks setup with the 5-speed Trans AC, PW PDL Tilt, Cruise & More 90K This is Like New!
\$23,995



01 DODGE RAM 2500 4x4 LARAMIE SLT

4x4 Ext. Quad Door Shortbox Cummins Turbo Dsl, Rare 5-Spd AC, PW, PDL Tilt Cruise, Stereo & New Radials Only 80K This One Will Really Impress You! She's All Black & Showroom Clean!
\$21,995



**86 CHEV SILVERADO
1500 4X4,
V8 - 350, AT, 80K
No Rust, Nice Clean Truck!
\$4,995**



**00 CHEV 1500 SILVERADO
QUAD DOOR 4X4 SHORTBOX**
1 OWNER, 90K, 5 3 Vortec AT, P Seat, Stereo & All Possible Power Equip! This is a Like New One, Owners Demo!
**\$14,995 Firm.
No Trade SPECIAL**



**00 DODGE RAM 2500 4X4
SLT LARAMIE QUAD DOOR,**
Longbed, Cummins Turbo DSL, AT, AC, PW, PDL, Leather Interior, This Truck Is All Black & Like New, 102K
\$20,500



**97 FORD F350 XLT 4x4
CREW CAB**
Long Box 7 3 Powerstroke Dsl 5-Sp AC PW, PDL Leer Matched Cap Loaded & Flawless 100 000 Mi
\$18,995



**97 FORD F250 XLT 4x4
EXT CAB LONGBOX**
7 3 Powerstroke, AT, AC, PW, PDL, Tilt, Cruise, & More 139K This is a Beautiful TK All Original Paint & New Radials!
\$12,995



**99 FORD F-250 XL 4x4 SUPERDUTY
QUAD DOOR LONGBOX**
7 3 Powerstroke, Rare 6 Speed Trans, AC, Cloth Super Clean ALL BLACK TRUCK Has Complete Tow Setup! 100,000 mi
\$18,995



**98 CHEV 2500 4x4
SILVERADO H.D.**
8600 GVW, 350 Vortec, AT, AC, PW, PDL Tilt, Cruise and More, 99K Very Sharp Truck!
\$11,995



90 FORD BRONCO XLT
V8 302, AT, AC, PW, New Tires, Shocks & Brakes Clean Truck, 120K, Black/Gray
\$3,495



**95 DODGE RAM 2500 4X4
LARAMIE SLT**
Cummins Turbo DSL, AT, AC, PW, PDL, Tilt, Cruise, Only 70,000 Miles, 1-owner, Showroom Condition!
\$13,995



**97 FORD F150 XLT 4x4
EXT. CAB,**
3rd Door Shortbox, V8 AT, AC, PW Pdl Tilt, Cruise & More, All Black Very Clean! 130,000 Mi,
\$10,995



**97 FORD F150 XLT
SHORTBOX**
V8 AT AC PW, PDL Tilt Cruise, Really Good Looking Truck, All Black & She's A Beauty 100,000 Mi
Only \$7,995



**95 CHEVY SILVERADO 1500
4x4 EXT SHORTBOX**
350 V8, AT, Power Everything, Blk/Gold 2-tone 100,000 mi Super Clean Truck!
\$8,995



**88 FORD F250 XLT 4x4
EXT LONGBOX**
7 3 Diesel, 5-speed All toys Real nice and clean truck 100,000 Mi
\$4,995



**96 FORD F250 XLT, 4X4
EXT., LONGBOX**
7 3 Powerstroke DSL, AT, AC PW PDL, Tilt, Cruise All DK Green, 120K, Real Sharp Truck Needs Nothing
\$13,995



**00 DODGE RAM 3500 4x4
QUAD DOOR LARAMIE SLT**
Longbox Dually 1-Ton Cummins Turbo DSL Highly Desired 5-Spd AC PW PDL Tilt Cruise & More 202K Recent Clutch Flywheel & Turbo New PA Insp & Brakes All Highway Maintained Miles Looks & Runs Like New ALL BLACK!
\$19,995



97 FORD F250 XL 4X4
351 V8 Gas, AT, AC, Alloys, 100,000 Miles, DK Blue & This Truck is Flawless!
\$8,995



**95 FORD F350 XLT
4x4 1-TON**
7 3 Powerstroke, AT, AC, PW, PDL, Cloth Seat, Stereo & More 140K
\$11,995



90 FORD F150 4X4 XLT
Straight 6 Cyl, 5 Spd, A/C, This is One Clean Truck, New Insp & Radials, Over 20 MPG These In Line 6's Are Almost Indestructible 100,000 Mi & Clean
\$3,995



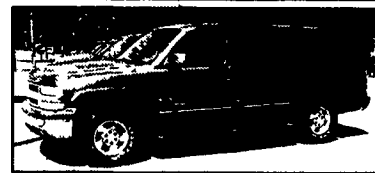
**98 DODGE DAKOTA SLT
4X4 SPORT**
Ext Cab V6 AT AC, PW, PDL, Tilt, Cruise & More 100,000 Mi Dk Green
\$8,995



97 FORD F150 XL 4x4
6 Cylinder, AT, AC, Cloth Interior, Only 80K, PA 1-Owner Truck, extra clean vehicle!
\$7,995

**93 DODGE
2500 4x4**
Cummins DSL, AT, AC, Laramie SLT, Nice Clean Truck, 100,000 Mi.
\$6,995

Disclaimer Mileage listed for your convenience only it is approximate not to be relied on as exact Sorry for any inconvenience



**2001 Chevy 1500
Suburban LT 4x4**

5 3 Vortec, AT A/C, PW, PDL, Cruise, Tilt, Cas/CD, Leather Dual Power & Heated Seats, Climate Control, On-Star, Rear A/C & Heat, Local Truck, 86,000 Mi, Gray
\$21,900



2000 Ford F350 XLT 4x4

7 3 Powerstroke Diesel, 6 Sp, A/C, PW, PDL, Cruise, Tilt, Cas/CD, P-Mirrors, Gooseneck Hookup, 9,900 GVW, 3 73 Ltd Slip Rear, 77,000 Miles Maroon
\$20,500

MARTIN'S AUTO SALES

1025 W. Main St., New Holland, PA 17557

(717) 656-6621

**DIESEL
PERFORMANCE**



Chevy Duramax: Adjustable Module 30 to 90 HP increase!
AFE performance air filter assy
Dodge 24 Valve: Adjustable Module 40 to 120 HP increase!
Exhaust & intake upgrades
Powerstroke: Performance chips 40, 60, 80 hp.
Programmed while you wait!!

SPECIALS:

- DURAMAX long block exchange.....\$5,700
- POWERSTROKE Test Engine exch.....\$5,500
- 6.5L Long block kit w/pump, inj. gp, & tubo exch.....\$4,750
- ALLIANT OEM Factory NEW Powerstroke injectors exchange.....\$207
- DIGITAL Pyrometer kit.....\$399
- POWER TONNO Cover by Webasto.....\$749
- 6.5L Exchange Turbocharger GM4, 5, & 8.....\$438
- STANADYNE PERFORMANCE Fuel Conditioner by the case.....\$48

From The Diesel Specialists For Over 45 years

Penn Diesel Service Co.

Interstate 81 Exit 77, Harrisburg, PA

(800) 535-2913

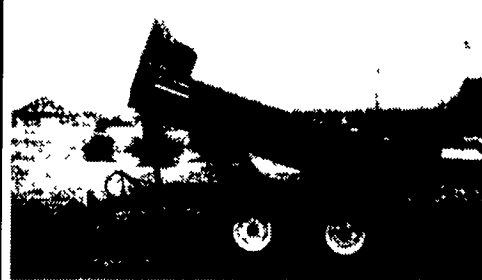
FARM DUMP TRAILERS

(Direct from the Manufacturer)

6-Ton Dump Trailer

- 10 ft. x 7 ft
- Floating Tandem Axle
- 3 ft. Front, 3 ft Tailgate & Grain Chute
- 16 in Extendable Sides
- 10 ga Floor & Sides
- 11Lx15 Flotation Tires
- 2-Way 4 in. x 24 in Hydraulic Cylinder
- includes hoses

\$3,200 U.S./delivered



7-Ton Road Dump Trailer

- Fifth wheel or bumper type
- 16 ft x 8 ft deck 3 ft front rack and pockets side & back
- D C hydraulic pump & battery mounted in locking tool box
- 12 ton drop leg jack
- 10 ga floor
- 6x3x3/16 tube main frame
- Sealed beam lighting
- 7000 lbs. per axle rating
- Electric brakes on both axle
- 16" tires on white spoked rims
- \$6400 U.S delivered in Northeast U S A



Tilt & Load Trailer 10,000 to 14,000 lb. Capacity
Excellent for loading low riding equipment various lengths available.

- D C Hydraulic pump includes deep cycle marine battery mounted in toolbox
- 7000 lb drop leg jack
- 3" channel cross members every 16" centre
- Pressure treated wood floor
- Sealed beam lighting
- Sand blasted, epoxie primed & painted
- 11 degree load angle on 24 ft trailer

BERKELMAN'S WELDING

RR 7, AYLMEER, ONTARIO, CANADA N5H 2R6

(519) 765-4230