

Nate & Ann Eberly
 E-mail Eberlynan@aol.com
 Web Page EberlyBarns.net

EBERLY BARNS
 Shed Row Barns / Run-in-Sheds
Quality Custom Built
 Sales & Delivery • Fully Licensed and Insured

717-391-7808 2010 Horseshoe Rd.
 717-391-7806 Fax Lancaster, PA 17602

Rocky Ridge Construction
Pole Barns, Horse Barns, Dairy.
Masonry and Concrete.
Agriculture and Residential.
Benuel K. Lapp
Coatesville, PA
(610) 383-5047

STAUFFER MACHINERY AND TOOL
 NEW AND USED WOOD MACHINERY

Tannehill QUALITY

QUICKNAIL
 SP100 \$329.99
 WITH CASE

The ultimate framing nailer!
 1 7/8" 4 toenailing cleats depth control under 7 1/2 pounds case included Drives Senco Paslode and Quicknail SP series nails

All Fasteners All Guns One Stop

Delivered Fast! Top Quality! Priced Right!

419 EAST CHURCH STREET • STEVENS, PA 17578

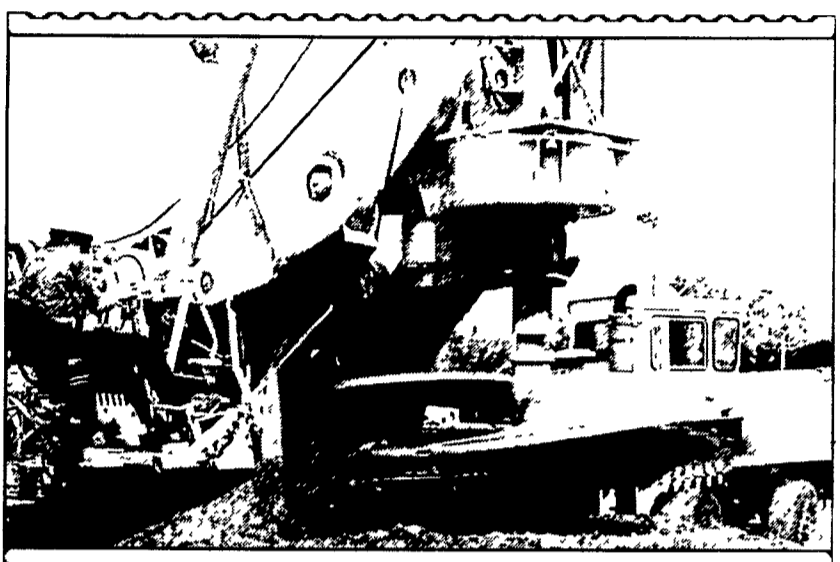
Regal Series Buildings

INNOVATIVE DESIGN!

Steel Frame and Poly Cover Solution

- Any Width from 30' to 240'
- Professionally Engineered Steel Truss with Poly Cover
- Hot-dipped Galvanized Trusses
- Sectional Roof Covering for Economical Maintenance
- Ratchet Wheels are Used to Keep Each Section Tight
- Open Ridge Vent or Covered by an Overshot
- Overhang
- Many More Options

Helping you **STRETCH** into the Future with Tomorrow's Buildings at Today's Prices!



Sabre Series Shelters

- 30' 38' 42' 50' and 65' wide
- 12.5 oz. Durable Poly Cover
- Square Tube Truss Design
- Powder Coated for Longer Life
- Your Most Economical Storage Option!

Economical Hay Storage

Great for Hay, Machinery, Cattle, Hogs, etc

We Cover
 BUILDING SYSTEMS, LLC.

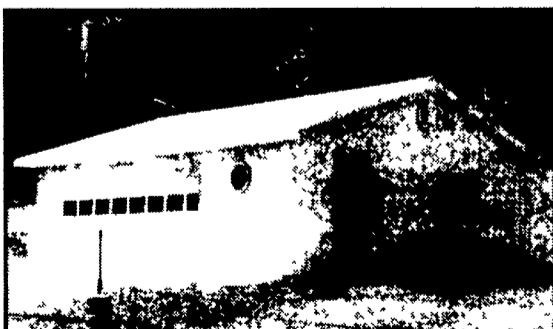
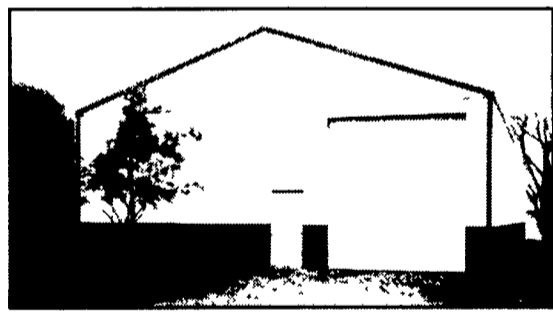
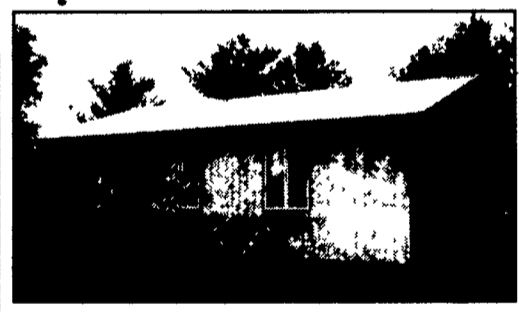
John E. Weaver
 1-888-672-2213 • 1-570-672-2213
 "Cover It Up for Profit"

- HAMMER ROCK DRILLING UP TO 48" DIAMETER
- ROCK & DIRT DRILLING UP TO 10' DIAMETER
- POLE BARN BUILDING - DRILLING ROCK & DIRT
- NEXT DAY SERVICE - 24/7 PHONE SERVICE
- CAISSON CONSTRUCTION
- LIMITED ACCESS DRILLING
- RAILROAD DRILLING
- ESTABLISHED IN 1977

PRECISION DRILLING INC.
 PHONE (800)-691-9166 STOCKTON, NJ FAX (908)-996-7211

- 30x50x12
 • 2-10'w x 10'h garage doors
 • 1-3' entry door
\$13,250
- 40x60x12
 • 1-12'w x 12'h sliding door
 • 1-10'w x 10'h garage door
 • 1-3' entry door
\$16,500
- 40x80x12
 • 1-12' x 12'h sliding door
 • 1-10'w x 10'h garage door
 • 1-3' entry door
\$21,400
- 50x96x14
 • 1-14'w x 14'h sliding door
 • 1-12'w x 12'h garage door
 • 1-3' entry door
\$28,400

• 40# per sq. ft. snow load on trusses
 • Financing Available
 • Call for free literature or see us at
 www.pioneerpolebuildings.com



PPB, Inc.
Can We Build One For You!

Stock Buildings

- 24x24x8
 • 2-9'w x 7'h garage doors
 • 1-3' entry door
\$5,750
- 24x40x10
 • 2-9'w x 8'h garage doors
 • 1-3' entry door
\$8,400
- 30x32x10
 • 2-9'w x 8'h garage doors
 • 1-3' entry door
\$8,400
- 30x40x10
 • 2-9'w x 8'h garage doors
 • 1-3' entry door
\$9,250
- 30x64x10
 • 2-10'w x 10' sliding doors
 • 1-3' entry door
\$13,250

Prices included tax, delivery materials, and labor for construction.

Pioneer Pole Buildings, Inc.
 716 South Rt. 183, Schuylkill Haven, PA 17972
 Toll Free 1-888-448-2505 Fax 1-888-448-2515
 www.pioneerpolebuildings.com

- 35 year warranty Everlast painted steel (your choice of color on roof, sides, trim).
- Steel is G 100 painted and heat roll formed by Everlast Inc., the best known roofing made.

