

CARTER LUMBER

Field Drain Tile



Baughman Tile Co.

◆Solid or perforated	\$18¹⁹
4" x 100'..... (9504 solid / 9542-perf)	\$45⁴⁹
4" x 250'..... (9500-solid / 9502 perf)	

Metal Roofing



PAINTED GRANDRIB 3

◆Custom lengths available ◆White in stock ◆19 colors to choose from ◆36" actual coverage ◆Stock sizes

per 10' sheet	\$15³⁰
per 12' sheet	\$18³⁶
per 14' sheet	\$21⁴²
per 16' sheet	\$24⁴⁸

Trusses



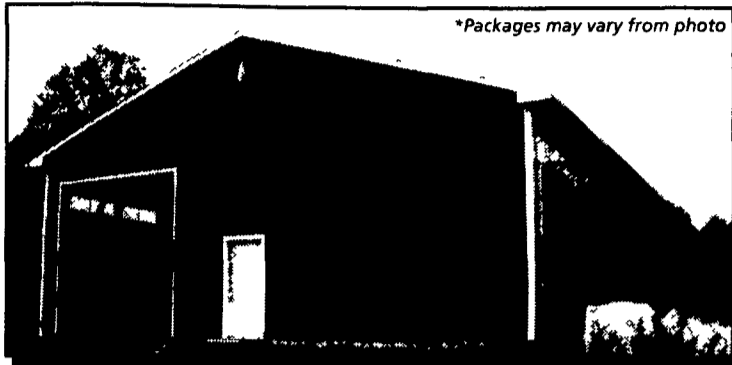
24' SUPER TRUSS

◆4/12 pitch with 1' overhang ◆Good for 4' on center at 30 lb. live load. Check local listing codes

(15575)

\$32⁹⁹

Pole Barns & Garages



*Packages may vary from photo

Painted Steel Siding w/ sliding door	8' HIGH 24' x 24'	10' HIGH 30' x 40'	12' HIGH 40' x 64'
25 yr. Painted steel roof	\$2,687	\$4,713	\$10,043

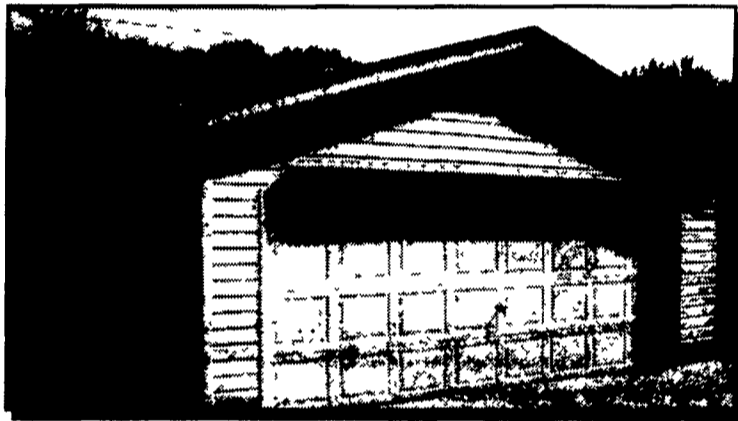
* Also available in T1-11 and vinyl - customize your pole building

FREE COMPUTER DESIGN

Any size, any style, any design. Check your local Carter Lumber store or carterlumber.com for an estimate.

STANDARD OPTIONS AVAILABILITY

◆24', 30', 40' widths x any length ◆Treated posts & skirt boards ◆25 yr. O.C. Fiberglas® shingles or Fabral® metal roofing ◆2" x 4" girts & purlins ◆Metal, Vinyl or T1-11 siding ◆Prefabricated trusses w/ 1" eave overhang ◆Sliding or overhead door w/ hardware ◆Nails, trim, soffit & plans ◆Optional 3' steel passage door. *Vinyl siding available in 24' & 30' wide buildings *40' barns available 14' high



	1 CAR	2 CAR	
Standard	18' x 22'	22' x 24'	26' x 24'
VINYL SIDING	\$2,610	\$3,161	\$3,498

* Available in basic & premium packages & many other sizes

FREE COMPUTER DESIGN

Any size, any style, any design. Check your local Carter Lumber store or carterlumber.com for an estimate.

STANDARD FEATURES

◆16" O.C. wall framing w/ treated bottom plates ◆Trusses ◆25 yr. O.C. Fiberglas® shingles with 1/2" OSB sheathing, roof vents and siding ◆Roofing felt, gable drip edge ◆CSE 100 3/0 man door, 1' eave overhangs & soffit ◆9100 series garage door (insulated) ◆Also includes nails, hardware, plans & instructions.

Dimension Lumber

◆We stock quality lumber in large quantities ◆Contact your local Carter Lumber for available species ◆Hem Fir or Doug Fir available in 22', 24' and 26'

	10'	12'	14'	16'	18'	20'
SPF 2" x 4"	\$274	\$320	\$378	\$443	\$510	\$567
SPF 2" x 6"	\$430	\$474	\$539	\$680	\$801	\$890
SPF 2" x 8"	\$527	\$736	\$775	\$928	\$10⁸⁰	\$12²⁷
SPI 2" x 10"	\$675	\$960	\$12¹³	\$13⁰⁴	\$13⁶⁵	\$14¹⁰
SPF 2" x 12"	\$880	\$10³²	\$11⁴⁸	\$15⁰⁴	\$18⁵⁴	\$20⁶⁰

Treated Lumber

◆All of our treated lumber is quality grade stamped and carries a limited lifetime warranty against rot & decay ◆Southern Yellow Pine

	8'	10'	12'	14'	16'
#2 2" x 4"	\$239	\$339	\$389	\$479	\$559
#2 2" x 6"	\$359	\$509	\$629	\$689	\$889
#2 2" x 8"	\$529	\$699	\$899	\$979	\$12¹⁹
Standard 5/4" x 6"	\$419	\$519	\$619	\$719	\$939
4" x 4"	\$499	\$799	\$919	\$949	\$1189

HOURS: Mon. thru Fri. 7:30-6:00 • Sat. 7:30-4:00 • Sun. 9:00-3:00

Good thru 8/2/03

LANCASTER

LBR. (717) 397-4829 / FAX (717) 397-4865
(Closed Sunday)

ELIZABETHTOWN

LBR. (717) 367-1886 / FAX (717) 367-3858
PEH. (717) 367-7707
(Closed Sunday)

CARLISLE

LBR. (717) 245-0404 / FAX (717) 245-9361
PEH. (717) 245-2486 / FAX (717) 245-0295

CHAMBERSBURG

LBR. (717) 263-0822 / FAX (717) 263-7077

NORTHUMBERLAND

LBR. (570) 473-8311 / FAX (570) 473-7149



Visit us online at carterlumber.com