
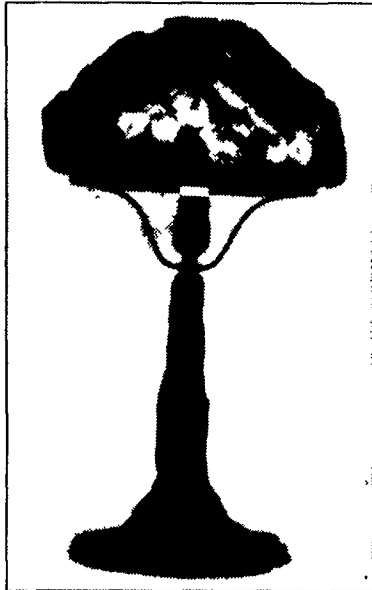


THE ANTIQUE DETECTIVE

Anne Gilbert

Signed Pairpoint open top Puffy Rose table lamp sold for \$2,645 at James Julia auction. Photo credit: James D. Julia Auctions, Fairfield, Maine.

Unique Techniques Used In Glass Lamp Shades
 The first decade of the 20th century was a time of experimentation with glass lamp shades. While the name of Louis Comfort Tiffany comes most readily to mind, many other companies such as Pairpoint of Bedford, Massachusetts and the Handel Company of Meriden, Connecticut were trying new techniques. Considered the most unusual were the "Puffy" shades created by Pairpoint and the inside painted shades of Handel.

They were mostly forgotten until the revival of interest in Tiffany shades during the 1970s. When they come to auction, they can fetch up to \$40,000 or more; a fraction of a Tiffany shade. At a recent auction of lamps and glass one signed "Puffy" rose table lamp sold under its estimate of \$4,000 — \$6,000 for \$2,645. An inside-painted Handel shade sold for \$5,750.

Other examples of both went unsold. There were many makers of Handel-style, reverse-painted glass. They sell for far less. At the Julia auction a Phoenix reverse painted shade lamp sold for \$287.

The "puffy" shade was introduced for the first time in 1907. Prior to that in 1904 it's precursor was a line of electric lamps named electroliers. They came with a mold-blown, hand-decorated shade. What made them different was the reverse painting on the inside.

Before they were decorated the outsides of the shades were etched with acid to produce a frosted surface. Each design had a name and depicted a variety of subjects. It was on July 9, 1907 that the company received a patent for what was called "puffy"

shades. They are also referred to as "blown out" shades. Pairpoint was the only company to produce this type of shade. Designs were usually fruit and flowers. However a large shell and an owl were also made, according to existing catalogs. The base of the owl lamp was a full owl figure in metal, while the shade dramatized the eyes and a portion of the body.

"Puffy's" continued being made until 1915 when public taste changed and they were out of fashion, as were all things Victorian-influenced.

CLUES: Almost all "Puffy" lamps are signed on the base. Metal bases will also have the letter "P" in a diamond. Wood bases are stamped with the company name.

Signatures on the shade are acid-stamped "The Pairpoint

Corp" or "Patented July 7, 1907."

Since Tiffany lamps were expensive even in their day, many companies did their own versions. Popular were striated glass shades combined with raised metal designs.

These, known as bent-glass shades, were produced as both hanging fixtures, table lamps and standing. It was less expensive to add a scenic design cast in metal than to hand-paint a shade. The answer was a cutaway brass band with designs of houses, trees, and so forth over a striated color glass. The shades were of one piece of glass held together by a metal rim or many small striated pieces, joined to the metal. These shades can even show up at country auctions for a couple of

(Turn to Page B21)

FARM EQUIPMENT & ANTIQUE AUCTION

Monday Evening, August 4 - 5:30 p.m.

McAlisterville, PA

Located in Juniata County just off Route 35, midway between McAlisterville and Richfield, directly behind East Juniata High School - follow White Hall Road to St. John's Road, first farm on left. Follow direction signs off Route 35 just north of the high school sale day.

Tall Case Clock, Antiques, Furniture, Glass & Collectibles
 Antique English 30-hour oak tall-case clock, very nice; early 10' painted-over church pew; white ash stained plank-bottom nursing rocker made by John Varner, McAlisterville; walnut veneered extension table w/board; bedroom suit w/single bed, dresser, night stand; girl's bedroom suit, white w/gold trim; modern double water bed; Lane walnut & oak triangular lamp stands; 110" plaid sofa; oak clothes tree; child's oak table & chairs; Montgomery Ward sewing machine in walnut cabinet; 4- folding chairs; painted-over pine wood box; whiskey barrel; 2- original framed oil paintings by James Arnold of Goodling's Garage in Cocolamus, Brown's Church in Cocolamus and an original pen & ink of St. John's Church by James Arnold; Century port-a-crib; 5000 BTU air conditioner; Jennie B. Smith, Cocolamus 1966 calendar; 1940 Mifflintown telephone directory; reproduction Illustrated Atlas of Juniata County; "The History of Delaware Township"; Tide advertising map of US; old Holman's edition of the Holy Bible; 2- Japanese swords; National washboard; Hershey's cocoa tin; early tin bread box; 3 gal crown crock; Pfaltzgraff stoneware plates & cups; large England bowl & pitcher; Shirley Temple pitcher; cranberry glass fruit bowl; green dep water set; Primrose pattern Mikasa fine china, svc for 8 with extras; milk glass decorated Indian plate; Samuel D. Myers, undertaking, furniture, carpets & wall paper, Newport, PA adv plate; carnival glass woven basket pattern; Queen Elizabeth coronation cup; small etched glass handled basket; fancy 3-footed decorated opalescent glass candy dish; crown & star glass butter dish; miniature creamer, sugar, butter dish & toothpick; glass lidded soap dish; Dresden Germany china au gratin; hand painted glass coasters; salt dips; toothpicks; milk glass scalloped edge cake stand; peanut butter glasses, asters, dahlia, iris, dogwood, spring crocus; Mayer ironstone server; a few nice pieces of pressed cut glass; Spochart, Thompsonstown ash-tray (gas station); amber glass rose pattern server; glass compote; large beaded glass creamer & sugar; early blue glass butter dish base; green glass-lidded jars; 1 & 2 qt green glass canning jars; German mother-of-pearl creamer; Victorian etched glass 4-footed creamer & sugar; miniature milk glass cup & saucer; hand-painted Japan cups & saucers; Prussia rose-decorated gravy; crumb tray; cricket clicker; hat pin; and more.

JD Collector Tractors, Farm Machinery & Farm-Related
 JD Model 60 NF tractor w/power steering, live PTO, sidehill hitch & live hyd, very sharp orig tractor, with like-new 13.6-38 rubber; 1945 JD Model B NF tractor completely restored w/paint, engine and power-trol; JD after-market 3 pt hitch to fit B or 60; JD 318 dual hydraulic riding lawn & garden tractor w/mowing deck, bagger & snow plow; IH 3-beater, 2-wheel wheel-driven manure spreader, good; NI #10 pull-type PTO corn picker; King Kutter 5' pull-type PTO rotary mower w/cylinder; IH 310 chassis w/15' flat bed w/side boards; Baltic 3 pt PTO fertilizer spreader; IH 2-row pull-type corn planter w/fertilizer and Gandy insecticide, exc; JD 9' drag disc; JD 3-section drag harrow; Oliver side delivery rake; IH single-hole corn sheller; 8'X5' 2-wheel farm trailer; No. 1 cast iron trough; Myers well pump, complete; 12' rough cut barn dried pine boards, nice; 3" channel and angle iron; wagonload of small farm-related items.

Guns
 Browning lever action .22 w/Bushnell scope; Winchester Model 70 7mm Remington magnum caliber w/Simmons 3X10 power scope; Winchester Model 1300 12 ga; Browning compound bow.

Sale Order: Household, antiques & collectibles at 5:30 - Tall case clock & furniture at 6:30 - Guns and small farm-related at 7:00 - Farm machinery at 7:30.

Bryan D. Imes & Sons, Auctioneers R R 1 Box 902, Port Royal, PA 717-527-2449 AU-001656-L
 James L. & Carol L. Arnold, Owners R R 2 Box 2140, McAlisterville, PA 717-463-2020

Food Stand by Brown's United Methodist Church
 Owners and Auctioneers not responsible for accidents
 Terms: Cash or good PA check

PUBLIC AUCTION

Dave Deibler & Ed Shoop

SATURDAY,
AUGUST 2, 2003,
AT 9:00 A.M.

LOCATED AT INTERSECTION OF LIMEPORT PIKE AND KINGS-HIGHWAY SOUTH, LOWER MILFORD TWP., LEHIGH CO. IN THE VILLAGE OF HOSENSACK, APPROX. 6 MILES SOUTH OF MACUNGIE OR 10 MILES WEST OF QUAKERTOWN OFF ROUTE 663





REAL ESTATE AT 1:00 PM - 2-1/2 STORY - 11 ROOM "L" SHAPED MTN STONE HOUSE WITH MTN STONE ATTACHED SUMMER HOUSE ON 12-1/2 ACRES BUILT 1749
HOUSE - FIRST FLOOR: Modern country style eat-in kitchen (cherry cabinets), formal dining room, family room, den with open mtn stone fireplace with wood burner, spiral staircase, laundry, large center hall & open stairwell, full bath **SECOND FLOOR:** 4 bedrooms & 2 smaller rooms, master bedroom with fireplace, bath, lots of closets **ATTIC:** 3 Storage areas **BASEMENT:** Cemented with 3 outside entrances **HEAT -** Coal/oil hot water baseboard heat **PORCHES -** Large front sitting porch, large back porch **ROOF -** 2 Years old 40 yr shingles **MTN. STONE -** Completely repointed Drilled Well - Standard septic **LAND:** 12-1/2 acres with approx 1500' hard rd. frontage, Spring fed pond, 10 acres fenced pasture **POOL:** 18,000 gal. in-ground pool & hot tub Blacktop driveway Taxes approx \$4700 **SUMMER HOUSE:** 2-1/2 story mtn stone **BARN:** 2-Bay stone/frame bank barn with side additions **GROUND LEVEL -** Insulated fireproof walls & ceiling, gas heat, 200 amp electric, insulated storm windows, good lighting, 3/4 is finished for workshop, A/C room & parts room North end of barn for cattle/horses

AUCTIONEER'S NOTE: House was built in 1749 This property was old stage coach shop House has not been changed in over 250 years Plan to inspect

TERMS: 10% DOWN, BALANCE 45 DAYS, FOR INSPECTION CALL 215-679-6629

ANTIQUE FURNITURE & COLLECTIBLES - Royal Bride nickel-plated kitchen stove; Sellers oak kitchen cabinet, Oak square ext. table, Set (4) oak chairs, Oak Princess dresser; Tiger oak slant-top writing desk, Oak library table, RCA victrola, Oak hall rack, Cane seat take-down high chair with cast wheels, Jelly cupboard, Washstand, Square trunk, Square stand, 1883 Oak potty chair, Oak shoeshine stool & box, Morris chair, Hanging cupboard, Plank bottom chair, Wooden wagon, Sled; Wooden barrel; 3" Wooden carpenter's tool box, Oak wall mirror & towel rack, Two-tier stand, Child's rocker, Toy box; Easel **COLLECTIBLES:** Crosscut & ice saws, Ice tongs; Cast iron butcher kettle, Butcher ladle & fork, Enterprise sausage press & meat grinder, Meat cleaver; Saddle harness bench, Butcher benches, Kettle & meat hooks, Hog scrapers, Hay hooks, Butcher knives & steel, 11" Broad ax, Enterprise cherry seeder, Shoe lathe; Chicken crates, Wooden hand clothes wringer, Rug beaters, Martha Washington sweeper, Washboards, Collection of kitchen graters, Cookie cutters, Griswold #10 muffin pan, Wooden rake, Buck saw, Draw knives, Grain flail, Straw knife, Wooden planes, Bark spuds, Sifters, AutoLite miner's carbide light **CROCKERY:** 4-gal water cooler, Cocks, Jugs, Mixing bowls, Ironstone chamber bucket; Longaberger baskets, Baskets, 1889 Wooden sewing machine box, Mirror, Copper tea kettle, Cast iron bank, 2-1/2" Mr Peanut sign; Pepsi soda case; Stainless milk bucket, Tin bread box, Brass base table lamp, Floor lamps, American family scale; Geneva hand fluter, Slaw cutters, Tobacco drying rack, Clothes drying rack, Old wooden fishing rod, Celluloid dresser sets, Shaving mirrors & mugs, Straight & safety razors, Tasty Kake potato chip box, Wooden cracker/biscuit box, Pretzel cans, Fish gig, Milk can; Coal bucket, aluminum cast patty molds, Kerosene lamps, WWII checker games, Old records, Pitcher & bowl set, Oval/gold picture frames; Braided rugs; Glass-top canning jars, Wooden handled items, Silverplated items, Knickerbocker Raggedy Ann doll; Children's books; Vintage clothing; Fisher Price toys, Medicine bottles, Milk bottles, David S. Roeder Hovensack, Romberger's - Lykens; Erdman - Elizabethtown; Yuengling bottle, 1919 Calendar Elmer Dockey Natl. Hotel, Pillow, PA

GUNS - ERTL TRUCK BANKS & J.D. TRACTORS, TOYS - GUNS: Rem Model 7600 pump 30-06 rifle with 3-9 Bushnell scope, US Springfield Model 1898 bolt action 30/40 Craig with bayonet; Mossberg Model 190 bolt action 16-ga shotgun, Stevens Arms Co Model 39 bolt action 410 shotgun; CVA 45 cal black powder flintlock rifle; Daisy #25 pump BB gun, Ben Pierson recurve bow Franklin Mint games (Chinese checkers, Monopoly, Backgammon); Fisher Price toys; Tupper toys; Wooden blocks; **SEVERAL ERTL LIMITED EDITION TRUCK BANKS & J.D. TRACTORS:** #620 tractor, #1929 wide front tractor, #80 diesel tractor, 1934 - Model A tractor, Model C wide front tractor, 1915 Model R Waterloo Boy, J.D. Model 94 airplane, J.D. Franklin Mint pocket knife, Buddy L dump truck, 1917 3-speed V-twin Harley motorcycle; Harley blanket, Tyco HO gauge train

CHINA/DISHES - DISHES: Green depression place setting for 8 lunch set; Pink depression butter dish, Lavender carnival candy dish, Mikasa bone china set of china; O G Germany 12-piece berry set, (Rose pattern); Colonial Rose pattern covered tureen; Bavarian platter; German pickle dish, Child's 25-piece Japanese tea set; Fire-King glassware; Bone china cups & saucers; Milk glass chicken-on-nest, Royal Haeger giraffe planter, **PATTERN & PRESSED GLASS:** Bowls; Refrigerator dishes; Butter dish & others, Princess House crystal, Fenton hand painted clock, Vase & candy dish, Lefton china figurines, Woodland Surprises F/M Whatnots, Pyrex mixing bowls

HOUSEHOLD GOODS - Whirlpool 18 cu ft upright freezer; G.E. 15 cu ft chest freezer; Sharp 27" color TV, Panasonic VCR's, Large gas room heatrator, Everett console piano & bench, Entertainment center, Barwick maple grandmother's clock, 7-Piece birch bedroom suite, Wooden ext. table (painted) oak cabinet, Chest-of-drawers; Victorian sofa; Love seat, Wingback chair; Recliner, Rocking chair; Metal wardrobe, Rainbow sweeper; Metal folding chairs; Lawn furniture; Picnic tables & benches, (2) Dehumidifiers, Card tables, Thomas radio; Lawn chairs; Picture & frames, New cookware; Guardian service cookware, Baking dishes, Small electrical appliances, Granite roast pan; Metal shelving; What-Not shelves, Window fans, Portable kerosene heater, Honeywell heater; Luggage; Fireplace set, Child's hobby horse; Child's metal wagon; Hercules boy & girls 26" bicycles; Crochet, Brass bucket; Box lots of Tupperware, Many new household items in boxes; Christmas decorations dry goods, Games; Puzzles & stuffed animals, Lots of box lots

OFFICE EQUIPMENT & FURNITURE & SUPPLIES - Hewlett Packard Office Set K60X1 fax, scanner, copier (like new); (2) Panasonic dot matrix printers; JVC PC (X560BK) CD portable component system; (5) Metal office desks; (2) File cabinets; Compac PC's; Kenetic PC, Epson (C40UX) printer AT&T 6200 electronic typewriter, (3) Postage back office chairs, Sentry #2170 safe; Stacking fabric chairs, Base storage cabinet; Electric staple gun; Paper cutter; Attache case, Many smaller office supplies

FARM EQUIPMENT, YARD & GARDEN EQUIPMENT, TOOLS, SADDLES & LUMBER - EQUIPMENT - ANTIQUE FARM TRACTORS - J.D. (Model A) Ser. #574964 - Tricycle front-end tractor (good condition & running order - restored); J.D. (Model L) wide front end tractor w/mounted cultivator (good running order & nice cond.); Sears (1964 Suburban) 12 hp lawn tractor w/42" snow blower, 4 ft. blade & 14" 3 pt. hitch garden plow, weights & chains (nice cond.); J.D. (38) rear mount 7 ft. P.T.O. sickle bar mower, Ford (#14-71) side mount P.T.O. 7 ft sickle bar mower; Two-wheel chain drive manure spreader (nice cond.), 30 ft. bale elevator, 7 ft. x 12 ft long heavy duty trailer w/side boards, (6 ft x 7 ft. long) snowmobile trailer w/side boards; David Bradley (143302) gas garden tractor w/3 ft. cutter bar mower & cultivator, Hudson (1010) 10-gal. power sprayer (w/B&S gas eng.) on chassis; Homelite (17 cc) gas weed whacker; Dynamark (9129) 1 HP. Gas rototiller (like new); Agway (Super 754) 18" gas chain saw; Wright (14") gas chain saw; Ensico (32") pull type water filled lawn roller, Rubber tire wheelbarrow; Bag platform scale; Hand operated single hole corn sheller; 200-gal. fuel tank w/hand pump, Barrel stand on dollies, Car ramps; 6 ft. wooden work bench. **SHOP EQUIPMENT: Floor Model (16 ga mild steel) 12" bender, Bench mount hand steel cutting shears, Floor stand (12 ton) adj. hydraulic press; Toledo (1-A) pipe threader; (2) Wooden clamps, Wooden handle soldering iron, Carpenter saws; Farm & lawn garden tools; J D (420) tractor manuals; Chev. (307 eng.) intake w/carburetor, (4) Michelin (215-R65/15") car tires (like new) **LEATHER SADDLES -** Pony saddle, Two western horse saddles; English horse riding saddle, Horse single trees; Bull nose rope; Fishing rods & tackle; Solar swimming pool cover. **LUMBER:** Stacks of old barn boards up to 16" wide in different lengths, (4) 4 x 4 ft barn board doors; (8) Bundles of cedar wood siding, Ash wood, Beams, Panel & pane glass house doors, Misc piles of lumber; **Numerous boxes of new G.E. & other electrical parts as (3) Gould (100 Amp) 3-pole bus duct systems, (6) Volt coil plant terminals, Transformers; 400 Watt ballast lamp replacements; (3) Gear reduction boxes (Ratio 214 1) & many others, Misc steel machine parts, Elect. motors, piles of wire & scrap iron.****

REASON FOR SALE - Owners relocating

ORDER OF SALE - Auctioneers may split & sell at (2) locations on premises 9:00 begin with small antiques, collectibles & household goods Furniture after 1:00 Farm & yard equipment 11:00 - 1:00 Guns at 12:30 Real Estate at 1:00 PM Lunch stand reserved

Be Sure To Check Our Other Great Auctions On The Internet At:
www.sentinelnow.com
 (click on auction link)

AUCTIONEERS:
 David Deibler 362-2942 AU001213-L
 Ed Shoop 896-8305 AU000842-L
 4199 Powells Valley Road, Halifax, PA 17032

OWNERS:
 Judy & Jack Klinger