

Rogers-Brook Farm

Cranesville, Erie County



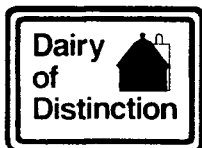
Ken and Shirley Rogers and son Eric operate the dairy farm here, including the 60-cow Holstein milking herd. They farm about 100 acres of corn, 150 of hay, and 30-40 acres of soybeans and oats to feed the herd.

Although Ken didn't grow up on a dairy farm, he started building a herd of registered Holsteins as soon as he graduated high school. He

bought this property in 1975 and continued to work away from the farm until 1984, when he made dairying his sole occupation.

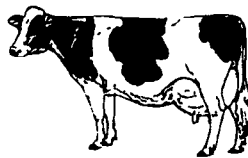
Eric returned to the farm a year ago after studying dairy science in college.

**Congratulations To All
"DAIRY OF DISTINCTION"
Award Winners**



For Extreme Cow Comfort Ulti-Mat™ All Rubber Cow Mattress Installation

Continuous Cow Comfort –
THE ONLY All Rubber Mattress
that recovers to original shape after
cow movement.



Absolutely The Ultimate in Cow Comfort

- **SPECIAL NOTICE:** As of March 2003, **ULTI-MAT** in barns 7 years & still maintains constant Cow Comfort
- Call for References
- Inert does not promote fungus or bacterial growth
- 3" nominal thickness - also 2" available for free stall installation
- Water and acid resistant polyurethane binder
- Mattress pads are guaranteed provided the top covers doesn't have holes in it with the original installation

Ulti-Mat now has a
NEW design & built **STRONGER**
to last even **LONGER**

Zartman Farms Now Has **WOVEN**
WATERPROOF & NON-WOVEN WATER
RESISTANT Cow Mattress Covers



*Installation and
Financing Available*

**Special Thanks
to All The
Farmers Who
Installed Ulti-Mat**

ZARTMAN FARMS

820 Hilltop Road, Ephrata, PA 17522
717-733-1050

SEE YOUR NEAREST DEALER

M&G Construction • Myerstown, PA 17067
717-926-2985

McMillen Bros. • Loysville, PA 17047
717-789-3961

www.zartmanfarms.com
E-mail:

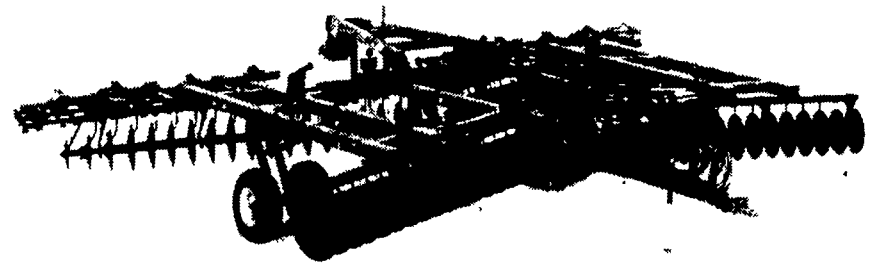
Melvin Lee Martun • RD#1 Box 9 3A • Martinsburg, PA 16662 www.zartmanfarms@dejazzd.com
814-793-4199

**Congratulations
Dairy of Distinction
Award Recipients**



ANNUAL JOHN DEERE SPRING TILLAGE SALE

Earth-shattering Deals!



Save up to **\$5,531** on a **NEW 637 Disk***

OR CHOOSE

0%

Fixed-rate financing for 5 years

Get big cash discounts when you order your new John Deere spring tillage tool before August 31, 2003. This is the absolute best time to get the John Deere tool you've been eyeing built to your exact specifications, and delivered in time for next year's spring tillage work.

Put the legendary quality of John Deere equipment in your fields, and these incredible discounts in your pocket. Choose from rugged disks, field cultivators, chisel plows, mulch finishers, and more. Visit us today and save big!

Fixed-rate financing valid for 60 months on qualifying new John Deere disks, chisel plows, field cultivators, mulch finishers, seedbed finishers, roller harrows, rotary hoes, row crop cultivators, and mulch tillers. Actual savings may vary *Discounted prices based on 37-ft. 10-in. folding 637 Rock Disk. Offer valid in USA only and subject to John Deere Credit approval See your participating John Deere dealer for details Order must be placed between June 1, 2003 and August 31, 2003.



ADAMSTOWN EQUIPMENT, INC.

Box 456, Bowmansville Road

Adamstown, PA 19501 717-484-4391

We Have Used Parts To Fit JD 2-Cyl. and 10 & 20 Series Tractors



Solid. Stable. Still John Deere.