

**YORK TRUCK CENTER, INC.**  
**GMC.** 55 S. FAYETTE ST.  
 YORK, PA 17404-0833  
 (717) 792-2636 - 800-930-2636  
 JOHN BRANT

**2000 MACK CX613**  
 460 Hp 15 Speed, Jake Brake, 70" Sleeper, Air Ride, Clean!

**2001 MACK CL700 NEW 17' 6" ALUM. J&J DUMP**  
 460 Hp 8LL 46 000# Air Ride, Alu Wheels Lift Axle

**35 TRUCKS AND TRAILERS**

6X10 box trailer, Show Master racing trailer, good cond. 717-768-3487.

'75 Int dump, 3208 Cat, new tires, brakes, looks good, runs good, 116K, \$4,900. Trailer, 23' tag-a-long, electric brakes, good tires, 14,000 GVW, flatbed, 8'W, \$2,500. 302-239-6909.

1978 Ford shortbed pick-up, 6 cyl, 4 spd, A/C, \$850 York, Co, 717-235-4437.

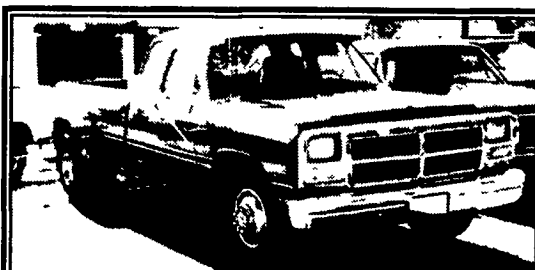
1989 PETERBILT 379 400 CAT, 13 spd, 36' sleeper, 567k mi, new brakes, tires, exhaust \$8,000/OBO. Call Ray 717/548-2911, MUST SELL-MAKE OFFER.

'00 Chevy S10 extended cab LS, 2WD, 4 cyl, auto, PS, PB, cruise, tilt, air, 47,000 one owner miles, new radials, \$7,950. 717-733-2873

1985 C70 Chevy grain truck, 16' all steel grain body, 15 ton scissor hoist, dsl eng, 5+2, 26K GVW, new inspect, all good cond, asking \$5,500. Eves, 717-786-1119.

SAVE. STORAGE OR ROAD TRAILERS, 20' or 40' GROUND LEVEL CONTAINERS. PROMPT & COURTEOUS SERVICE. REASONABLE RATES. YOUR STORAGE SOLUTION, INC. 610/921-1955, 1/800-220-6082

1991 Chevy Suburban 4x4, 8 pass, 141k miles, new tires, ex running cond, \$5000. Call Camp-ground 717-789-2117



**1993 Dodge D-350 Club Cab, Dually, Cummins Diesel, Automatic, Power, Cold A/C, 190K Miles, Very Good Cond., Runs Super! \$5,950**

**Double-D-Auto Sales 717-774-5590 N. York County**



**1993 International Tractor Model 8200**  
 3176 Cat engine, 10 Speed, 550,000 Miles, (head leaks oil) **717-442-4183**



**16' Landscape Trailer**  
 82" BWW, w/Spring Assist ramps **\$2,150**



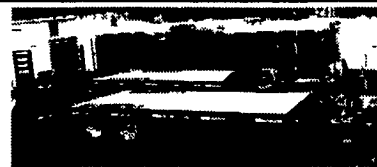
**Goosenecks**  
 All Sizes In Stock



**Skidsteer Trailer**  
 16', 10,000 GVW **\$2,450**



**Cargo Sport Cargo Trailer**  
 8 x 20 Tandem Axle, Pewter, 36" Side Door, Roof Vent, Stoneguard, Light **\$5,200**



**Deckover Trailer**  
 8 1/2 x 20, 10K GVW w/Level Deck & Ramps **\$3,995**



**Used 9 ton Hudson**  
 New Brakes & Drums. **\$3,300**

**Full Service Facility • State Inspection • Aluminum Welding & Fabrication**



We stock a full line of trailer parts & accessories, and truck accessories too Same day shipping on all in stock items.

**LanChester Trailer Supply, LLC**

**717-768-0663**

3220 East Gordon Rd. Gordonville, PA

www.lanchestertrailer.com

6:15 AM - 5:00 PM M-F  
 8:00 AM - 1 PM Sat.

**Truck Sale Van & Tanker Combination**

1987 International 24' Van  
 With 2-500 Gallon Tanks Pump  
 Meter Hose Reel Perfect for Job Site  
 Fueling and Lube Truck  
 DT 466 Engine 5&2 Transmission  
 Rebuilt Engine Clutch Transmission  
 Less than 70,000 Miles Good Tires  
 Lift Gate (Needs Pump)  
**Price \$8,500**

Located at M.W. Farmer Williamsport

Or call  
**LUBECO INC - Jim Post**  
 Wilkes Barre, PA  
 1-800-222-1838

**BOWERS USED CARS INC.**  
 Route 30 West of Abbottstown, PA  
 7015 York Rd. 717-624-7072  
 www.bowersusedcars.com

 <b>1990 FORD E350 Econoline</b> V8 Auto PS PB New Inspection <b>\$6,900</b>	 <b>1997 GMC SAFARI VAN</b> V6 Auto Equipped <b>\$6,995</b>
 <b>1998 CHEVY ASTRO VAN</b> Auto PS PB <b>\$6,500</b>	 <b>2000 HONDA CIVIC</b> Dual Overhead Cam Radical Customized "Speed 4 Cyl" 19,000 Miles <b>\$15,900</b>
 <b>97 FORD ECONOLINE 150 CARGO</b> Intron V8 Auto AC PW & PB PW&L 14,000 Miles <b>\$6,500</b>	 <b>94 MITSUBISHI FUSO</b> Auto 4 cyl Diesel New Tr Insmfion. 115,000 Miles 14 Box 12,000 GVW New PA Insp <b>\$6,500</b>
 <b>97 CHEVY S10 BLAZER</b> 1.3L 6 Cyl Auto 2 Drs 4x4 Equipped 83,000 Miles <b>\$6,995</b>	 <b>95 DODGE RAM 1500 4X4,</b> V8 Auto PS PB over 100,000 Miles <b>\$5,995</b>
 <b>97 CHEVY EXT. CAB SILVERADO</b> 4x4 3rd Door Auto V8 114,000 Miles Equipped <b>\$12,500</b>	 <b>86 ISUZU NPR</b> 3.9 Diesel 5 Speed 14 Box 123,000 Miles New PA Insp 12,000 GVW <b>\$4,500</b>

**YARNALLS Equipment Co.**  
 4171 Horseshoe Pike (Rt. 322), Honey Brook, PA 19344  
 Call Today Toll Free: 866-228-0408  
 WORTHINGTON

**EXISS In Stock • EXISS In Stock • EXISS In Stock • EXISS In Stock •**

 <b>Pace Journey, 6' x 12', Ramp Door \$2,380</b>	 <b>Continental Cargo CC818TAZ, 7K GVW, Black, Dbl. Rear &amp; Side Doors, Vent and Lites, Stone Guard \$4,575</b>	 <b>Exiss Stock Combo 7' x 20' \$11,100</b>
 <b>Big Tex 7K 5x10 Dumper, Black \$3,936</b>	 <b>Continental Cargo CC820TAZ, Dbl Rear Doors, Side Door, Stone Guard, Vent &amp; Lites \$4,900</b>	 <b>Exiss Sport 3-Horse Slant Load w/Dress. No down payment \$12,499</b>
 <b>Pace America 6x10 Dump Trailer, Black, Great Price \$4,078</b>	 <b>Continental Cargo CCT16TAZ, Ramp, Rear &amp; Side Door, White \$4,320</b>	 <b>Bison Stock 7x16 7 high, red w/spare \$5,275</b>

**USED TRAILERS**

 <b>18 Ft. Deckover, 10K</b>	 <b>1994 Pacer 16 Ft.</b>	 <b>1996 Big Valley 3 Horse Gooseneck</b>
---------------------------------	------------------------------	--

MasterCard REESE Financing - Trade Ins - Repairs  
 Hours: Mon., Tues., Wed., Fri. 8:30-5:00;  
 Thurs. 8:30-7:00; Sat. 9:00-1:00 P.M.  
 8 Miles Off Exit 22 PA Turnpike  
 VISA WESTERN SNOWPLOWS