

For Sale
1988 Chevy Flatbed Truck with Tool Boxes
 4-Wheel Drive, Dually, Gas Engine, Automatic Transmission, with or without Welder
Call 717-438-3354

www.useddieseltruck.com

CHECK IT OUT

ROCK SPRINGS HARDWARE



Closed Utility Trailers

3,500# tandem axles, 24" crossmembers on floor, 16" crossmembers on walls, 3/8" plywood walls, 3/4" plywood floors From 5'x8" to 8'x32". Many options to choose from



Starting At \$1,995

12' Skid Steer Trailer

GVWR 9,000lb, 6" Channel frame (2) 4000lb axles w/electric brakes breakaway kit 12' oak loading deck, 78" between side rails, 60"x14" adjustable flip-up ramps



Starting At \$3,695

Triple Crown Dump Trailer

6'x10', 6'x12', 7000 lb GVW & 10,000 lb GVW Powder Coated 6'x12', 12,000 lb GVW, twin cylinders, 750x16 tires, 8 lug \$4,695



Starting At \$2,895

18' Contractors Special

12,000 lb GVWR, 6" channel frame, two 6,000lb axles eight lug 750x16 Tires, all wheel electric brakes with breakaway kit



Starting At \$5,495

24' Tandem Dual Pintle Pull

10" channel frame, (2) 10,000lb tandem dual oil bath axles, all wheel electric brakes with breakaway kit, 2" treated wood floor (20' flat deck, 4' dovetail), stake pockets and rub rails



Starting At \$5,995

28' Tandem Dual Gooseneck

25,500 GVWR, height of deck 35", 10" I-beam frame, 10,000lb tandem dual oil bath axles, all wheel electric brakes with breakaway kit



Starting At \$3,295

20' Hauler Tag-Along Deckover

Trailer Weight 3000lb, 10,000, 12,000 or 14,000 lb GVWR avail. Height of deck 35", 8" I-beam frame, all wheel electric brakes w/breakaway kit, 2" treated wood floor, 16" flat deck, 4" wood dovetail, stake pockets and rub rail



Starting At \$3,795

24' Tandem Deckover Gooseneck

12,000 or 14,000 lb GVWR avail, 8" I-beam frame, two 7,000 lb eight lug EZ Lube axles, all wheel electric brakes with breakaway kit



Starting At \$1,995

16' Equipment Trailer

GVWR 9000lb 16' wood flat deck, 83" wide, 5" channel frame and channel crosspieces, (2) 4,000lb axles with brakes on both, stake pockets

Now offer low monthly payment on every trailer
90 Days Same As Cash With Approved Credit

1320 Rock Springs, Rising Sun, MD

1/2 Mile South of Lancaster County on Rt. 222; Open: Mon.-Sat. 8-6; Closed Sundays

410-658-5978 • 1-800-858-0288



2001 Dodge 1500 Quad Cab, 4x4,
 5.2 V-8, Auto, 16K Miles, R-Title,
 Black in Color
\$14,900

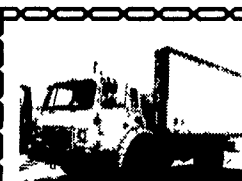
570-289-4349

Fax 570-289-4886



1995 GMC Topkick, 3116 Cat, 200 hp.,
 5 spd., 35,000 lb. GVW, air brakes, 22 ft.
 Morgan box, 28,000 original miles, **\$10,900**

717/532-6707



1985 International Cargo Star, 192,000 Miles, 22,500 GVW, 7.3L Diesel, Auto, Cab & Chassis



1994 International, Cab & Chassis, DT 466, 210 HP Eng., 6 speed Trans., AC, PS, Full Air Brakes, Looks new & Runs New! 33,000 GVW



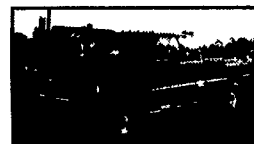
1995 International 8100, 32,000 GVW, 453,000 Miles, L10 Cummins Diesel 300 HP, 9 Spd Trans, Spring Suspension Air Brakes, 295/75 R 22.5 Tires on Budd Wheels, White Conventional Cab, P/S A/C, Heated Mirrors. Must Sell!



1993 International, 7.3 Diesel, 5 Speed Trans., PS, AC, Full Disc Brakes, 79,000 Miles, New Rubber, Paint, "All The Bells," Looks New, Runs New, 25,500 GVW

Phone 717-664-1696
CHARTER ENTERPRISES, LTD.
 270 Hostetter Road, Manheim, PA

USED TRUCKS



1997 DODGE RAM 2500 CLUB CAB, 4x4, V-10
 Laramie SLT, Leather, AT, A/C, Most Options, Black, 108K Miles.
\$12,900



1999 FORD F350 QUAD CAB DUALY,
 XLT, 4x4, Power Stroke Diesel, 6 Spd., A/C, most options, 9 ft. Flat Bed, 5th Wheel tilt, 101K Miles, Black
\$21,500

2002 DODGE 3500 Cab & Chassis, 4x4, Cummins Turbo Diesel, 6-Spd, A/C, 97K Miles, RedComing In

2001 DODGE 2500 4x4 QUAD CAB SLT Laramie, 8ft Bed, Cummins Turbo Diesel, AT, A/C, Most Options, 119K Miles
 Coming In

2000 CHEVY 1500 4x4, 8 Ft Bed, AT, A/C, 38K Miles, Black **\$13,900**

1999 FORD F250QUAD CAB 4x4, XLT, Powerstroke Diesel, AT, A/C, Most Options, 129K Miles, Silver **\$19,900**

1999 DODGE RAM 2500 QUAD CAB SLT, 4x4, Cummins Turbo Diesel, AT, A/C, Most Options, 94K Miles, Dk Green **\$18,900**

1998 DODGE RAM 2500 4x4, Club Cab, 12 Valve Diesel, AT, A/C, C, 93K Miles, Red **\$17,900**

1997 CHRYSLER TOWN & COUNTRY MINI-VAN, 3.8 6-Cyl, 4x4, AT, Dual A/C, Most Options, 130K Miles, Green **\$7,550**

1997 CHRYSLER TOWN & COUNTRY MINI-VAN, 3.8 6 Cyl, 4x4 AT, A/C, Most Options, Leather, 68K Miles, Black **\$9,850**

1995 DODGE RAM 2500 SLT EXT CAB, 4x4, Cummins Turbo Diesel, AT, A/C, Most Options, 131K Miles, Dk Blue **\$14,500**

SCHAEFFERTOWN AUTO & TRUCK SALES

RT. 501, 1-1/2 miles South of Schaefferstown 717-949-2812

35 TRUCKS AND TRAILERS

1991 Int. 4700 14 ft. flat bed, 9 ltr. engine, Allison auto trans., 26,000 GVW piggyback toolbox, \$900! obo. 610-587-6075

95 Tri Brook Dump, 40 ft framless roll tarp, Lebon non Co Pa. 717-964-2201

'96 Dodge 1500 short whl base, 8 pass, 3.9 V6 auto PS, PB, air, Am-Fm cas sette, 35,000 one owner miles, \$7,950. 717-733-2873

White 5,000 gal manure truck, \$6,000/OBO 215/348-5514

98 GMC HD2500 lb, 4x4, ex-cab, 5.7, 58K mi, \$15,500. 610-345-1254

1986 DM Mack, long WB w/log loader. 610-944-9871, 610-858-4092

1989 Ext. cab, 350XLT Utility Bed Trk, Dually whls, A/C, 460 eng. low miles, great cond. \$5,800; Hubber maintainer grader, gd cond. \$2,000; 1979 White Tandem Dump Trk, late mdl bed 13', 290 Cummins, Jake Brake, 15 spd trans. gd cond. \$7,000. 717/-225-1888.

1987 F50 dsl, 9' utility body w/plow, 105K orig mi, asking \$3500. 267-716-1379.

'73 Chevy C65 cabover w/18ft steel dump & hoist. Rebuilt 366 w/less than 1000 miles, runs well, air brakes, custom bed w/Omaha Standard sides, \$3000 obo. 410-259-2387

BUY, SELL, TRADE OR RENT THROUGH THE CLASSIFIED ADS IN Lancaster Farming

PHONE: 717-626-1164 OR 717-394-3047
FAX: 717-733-6058



Mon., Tues., Wed., Fri. 8 AM to 5 PM
Thurs. 7 AM to 5 PM



THE HONDRU EXPERIENCE

OVER 200 TRUCKS AVAILABLE FROM OUR 4 DEALERSHIPS

E-TOWN DODGE

Route 230 E-Town • 717-367-6644
 877-924-6644

2001 DODGE RAM 2500



Quad Cab, SLT, 4x4, Cummins Turbo Diesel, Well Equipped Only 36,000 Miles

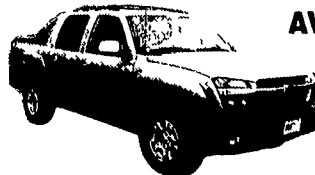
COME SEE THE ALL NEW DODGE SPRINTER VANS AT E-TOWN DODGE.



E-TOWN CHEVROLET

Oldsmobile Pontiac
 Route 230 E-Town • 717-361-7776
 877-924-6644

2002 CHEVY AVALANCHE



4x4, V-8, Auto, Leather, North Face Edition, Equipped

2003 DODGE CARGO VAN - 3 Available
 Racks, Shelving - Save Huge Dollars Over New Ones!
 2003 JEEP LIBERTY SPORT 4X4 - V6, 5-Spd, All Power Equip
 2003 DODGE RAM 1500 - Quad Cab, Long Bed, 4x4, Auto, V-8
 2002 GMC 2500 HD - Crew Cab, Long Bed, 4x4, 6.0L V-8
 2001 CHEVY 2500 H D REG CAB, 4x4, V8, AT, C T, Air

All prices Include Rebates Exclude Tax, Tag and \$55 Doc Fee

LOADS OF USED PICKUPS CALL ANY STORE FOR DETAILS

Visit us @ www.hondruauto.com

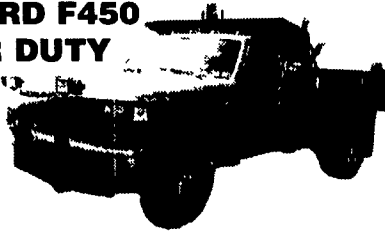
OVER 10 CHASSIS IMMEDIATELY AVAILABLE FOR BODY INSTALLATION AT OUR LOCAL BODY COMPANIES!

PHILLIPS FORD

Route 72 Manheim • 717-665-3551
 877-597-3551

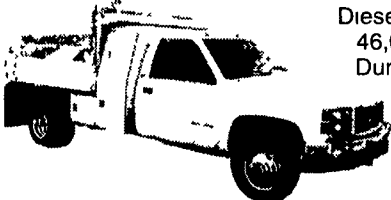
1993 FORD F450 SUPER DUTY

Diesel 5 Speed Dump & Plow



1995 GMC 3500 4X4

Diesel, Auto, AC, 46,000 Miles, Dump & Plow

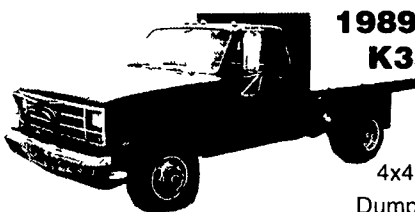


MANHEIM CHRYSLER GMC

Route 72 Manheim • 717-665-2473
 877-603-2473

1989 GMC K3500

4x4, Flat Bed Dump • \$7,995



2001 FORD F250 SUPER CAB

5 Speed, Diesel, 2 WD

