

**35 TRUCKS AND TRAILERS**

1996 GMC 2500 3/4-ton truck, ext. cab, 4x4 long bed, pwr door lock, A/C, tilt, cruise, w/matching cap, 5.7L, V8, auto, 79k exc. cond. \$10,900. 610-944-4718

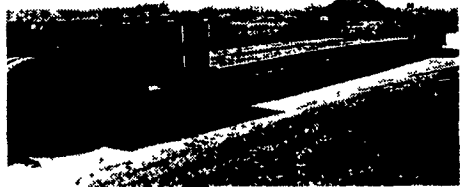
42' Alum. Drop Deck Box Trailer, Single or Tandem Axle, \$2,500. 610/287-6958.

1979 Mack tandem dump truck, 18ft alum dump body, w/barn door tailgate, 30 cu/yd cap, 58K GVW \$10,000 610-268-8258



'97 Dodge Dually Ext. Cab, Dsl, Auto, 150,000 Miles, New Trans, Tires & Brakes, Towing Package, Serviced & Road Ready.

**\$15,900 Must Sell**  
Fox Farms Lebanon, PA  
Kevin @ 717-821-5516



99 Dynaweld Mechanical Detach Trailer  
35 Ton, Air Ride, 28' Well  
**\$17,500**

Weaver's Truck & Equipment  
570/523-9598



Gooseneck Trailers



Landscape Trailers



Skid Steer Trailers



Deckover Trailers

For information and the name of your nearest dealer, call

**BELMONT MACHINE**

Manufacturer of Trailers & Farm Machinery

800-380-2404

Dealerships available in select areas

**35 TRUCKS AND TRAILERS**



1983 MACK DM685S, EM6 237 Mack 280 Hp., 5 Spd., Engine Brake, Camelback Suspension, 22.5 Tires, Tri Axle, Green, 17' Steel Dump Bed w/Tarp, Front Axle 18,000 Lb., Rear Axle 44,000 Lb., Double Frame, Power Steering, Good Working Truck, Stk #130133, \$8,500



2002 VOLVO VHD64F, 275 HP Engine Allison MD356P, 6 Speed Automatic, 20,000 lb Front Axles, 40,000 lb Rear Axles Neway Pusher Axle New Stone Slinger Body Stock #142001 \$99,800



1989 FORD F450 XL, Diesel International, 5 Spd. OD, White, 13' Crane Reinforced Body, 2001 IMT Model 2020 Electric/Hydraulic 5,000 lb 20" 11" Reach, Manual Outriggers, Kohler Gas Air Compressor, 24" Work Bench Bumper, 6 9 Liter Diesel, 14,500 GVWR, Stk #170191, \$14,500



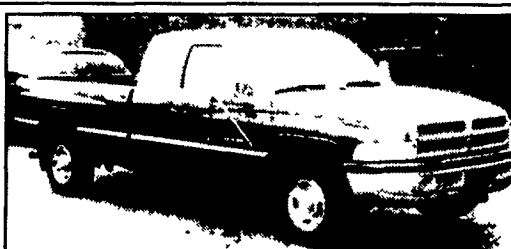
1990 PETERBILT 357, 34068 CATERPILLAR 325 HP, BLL Spd., Hendrickson Suspension, 4 33 Ratio, 22.5 Tires Tri Axle, White/Black, Rear Dump 12,000 lb Front Axle 40,000 lb Rear Axle, 16' Steel Dump, Electric Tarp, Stk #130153, \$24,500

**Chevy Engines New & Reman**

Tractor, Backhoe, Loader, Engines Rebuilt  
717-762-6415



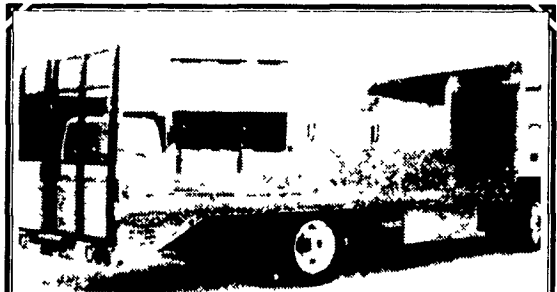
1987 Int/Carpenter School Bus  
72 pass., IH V8 Diesel, Allison A/T, 27,080 GVWR, 167,786 mi., current PA insp.,  
**Asking \$1,895**  
(717) 354-8255 Don Martin or  
(717) 484-4222 Mel Weaver



1995 DODGE SLT 2500 EXTENDED CAB, 2WD, V10, 5 Speed, PS, PB, PW, PDL, Cruise, Tilt, Air, 8,800 GVW, 410 Ratio, Limited Slip Diff., 36,000 One-Owner Miles, Ex. Cond., Dark Green  
**\$10,500**

**A&J AUTO SALES**

798 E. Main St., Rt. 322 East, Ephrata, PA., 17522  
717-733-2875



**Landscaper**  
all aluminum flat bed 13' with 4' beavertail with spring loaded ramps, 2 underbody tool boxes, roll up mesltarp trailer hitch, used as mowing trk  
**814/ 793-3923**  
**\$6,500 obo**

2000 GMC SUBURBAN  
81,000 Miles  
**\$21,995**



**98 DODGE, QUAD CAB**  
4x4, V-8, Auto, Equipped

1988 GMC 3500 Flat Bed Dump  
V-8, Auto, PS, PB  
**\$5,500**

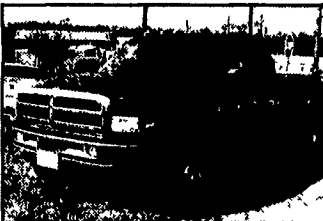


**STROBECK'S**

AUTO SALES  
262 W. George St. York, PA  
**717-244-4282**

Mon., Tues., Wed., Fri. 8 AM to 5 PM  
Thurs. 7 AM to 5 PM

**Diesel Owners! Get HP & Fuel Mileage**



**We Have Performance Chips For The Following:**

- Dodge Cummins 40-120 HP + 175 Ft. lbs. More Torque
- Chevy Duramax 70-210 more HP up to over 400 lbs. of Torque
- Ford Powerstroke 60 - 80 - 120 add more HP up to 200 lbs. of Torque
- VW TD 35 more HP add up to 35 + 45 lbs. of Torque

Free Installation 2003 Performance Chips & Exhaust are here & in stock!

We carry complete line 4" exhaust systems for..... \$550  
\*Torque Converters \*Valve Bodies \*Exhaust Brakes \*Gauges \*K&N Air Filters



Call About Our Gas Chips

You Get More Horsepower & Torque  
We Carry The Best Stuff For Your Truck  
Propane For Diesel - Nitrus For Diesel  
(717) 249-2255 Call Now!!! Ask for Shawn

**LOVE'S AUTO SALES INC.**

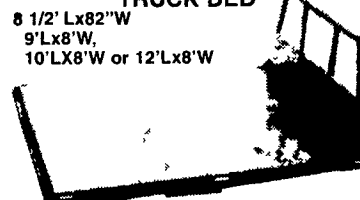
1970 Spring Road, Carlisle PA 17013

Sales, Service & Inspection



Better Fuel Mileage

**ALL STEEL REPLACEMENT TRUCK BED**



Underbody Tool Boxes Available

8 1/2' Lx82"W  
9'Lx8'W,  
10'LX8'W or 12'Lx8'W



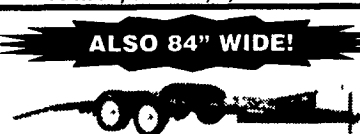
UTILITY TRAILER  
4'x8' Tilt \$495

4'x8', 5'x8', 5'x10' 2000# GVW  
5'x10', 6'5" x12', 3000# GVW



LANDSCAPER

16'x77", 18'x77", 7,000# GVW



ALSO 84" WIDE!

CAR HAULER  
16'x78" & 18'x78" includes 5' Beavertail  
7,000 lb. GVW 4' self storing ramps

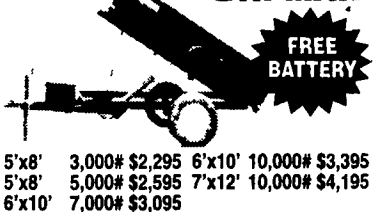
**Special!**  
5'x10' 3,000 lb. GVW  
**\$935 • \$950**

- Roto Tillers  
4ft \$1,250 5ft \$1,295 6ft \$1,395
- Finish Mowers  
5ft \$995 6ft \$1,095 9ft \$1,395
- Rotary Mowers  
4ft \$585 5ft... \$595 6ft \$695
- 3pt Fertilizer Spreader \$329
- Pull Type Fertilizer Spreader \$595
- Pull Hay Tedders  
9ft . \$1,295 17ft . \$2,695
- 19 Ft. Hydraulic, Tilt Trailer, 10,000 lb GVW \$3,495
- ATV Hauler, 3000 lb. GVW, 7'x10' \$1,095 7'x12' \$1,195

Car Dollie \$795

Over 200 Trailers IN STOCK  
Starting At \$495.00  
T-Plates  
**DEALERS WANTED**

**HIGHWAY HYDRAULIC DUMP BRI-MAR**



FREE BATTERY

5'x8' 3,000# \$2,295 6'x10' 10,000# \$3,395  
5'x8' 5,000# \$2,595 7'x12' 10,000# \$4,195  
6'x10' 7,000# \$3,095

**LOW PROFILE DUMP TRAILERS BRI-MAR**



Other Sizes Available

6'x12' 10,000# \$4,395  
6'x10' GVW 7,000# \$3,595  
10,000# \$3,995  
FREE BATTERY

GOOSENECK SIZES: w/4' Adj. Tail  
20'x8' 12 or 15,000 GVW  
24'x8' 15,000# GVW  
Low Profile Construction  
16'x77" & 18'x77"-10,000# GVW \$3,395  
20'x8' w/Tail 12,000# GVW \$3,795

**Curry Supply Co. 1-800-345-2829**  
Curryville, PA 814-793-2829

**KUTZ FARM EQUIPMENT, INC.**

Quality Trailers Built Locally By "PA International"  
71 Kutz Road, Pine Grove, PA 570-345-4882 Fax 570-345-2884 7:30 AM-4 PM Monday Thru Friday  
7:30 AM-12 Saturday Or By Appointment