

### Koser Building Materials

FOR YOUR HOME IMPROVEMENT NEEDS  
 LOCATED NORTH OF ELIZABETHTOWN  
 OPEN MON.-FRI. 8 TO 6, SAT 8 TO 3

- Kitchen Cabinets
- Plywood & Waferboard
- Asphalt Roofing Shingles
- T-1-11 Siding
- GP Insulation
- Railroad Ties
- Shutters
- Replacement Windows
- Vinyl Siding

**717-367-0283**

**T & G**  
**45¢/per foot**  
 Auction Dates:  
 9/1, 10/1, 12/13

WELLS  
 FARGO

### Leasing For The Next Stage<sup>®</sup> Of Your Business

Buildings    Equipment    Vehicles

Wells Fargo Financial Leasing  
 Rural Markets    **800.451.3322**

### Galvanized or Galvalume?

For metal roofing and siding, which is better, painted Galvanized or painted Galvalume?. Galvanizing is many times better if it's mill certified G100. Why is it better? Galvanizing tends to "heal" when scratched. The more galvanizing, the better. Everlast is ten times better at "healing" than galvalume because galvalume hardly "heals" at all when scratched. Also cut edges rust quickly on galvalume.

Everlast Roofing, Inc, 239 N. 5th Ave., Lebanon, PA 17046.  
 Call toll free 1-888-339-0059 for info. & nearest dealer  
 (Mid-Atlantic, New England, Midwest)

### Poured In Place Insulated Concrete Walls

★ Cut Heating & Cooling Cost by 35% ★  
 Easily Adapted to Any Design &  
 Configuration.

Call for Details

#### Conestoga Concrete Walls

65 N. Harvest Rd,    Contact Elam  
 Bird-in-Hand, PA 17505    717-278-7150

### \$ WHOLESALE \$

1/2" to 8" PIPE 1/2" to 8"

Prime, secondary, structure pipe  
 Farmers, Manufacturers, Fabrication  
 — Will Cut To Your Size Needs —

#### STEEL TUBING

1 1/2" Sq    3 1/2" Sq    2"x2" Sq    2"x4" Rect  
 2 1/2" Sq    4"x4" Sq    3"x3" Sq    3"x2" Rect  
 20' to 24' Lengths 1/8" to 1/2" Thick

### BRICKER'S PIPE YARD

717-261-0095    1970 Frank Road  
 Chambersburg, PA 17201

### We Specialize In All Types Of Buildings

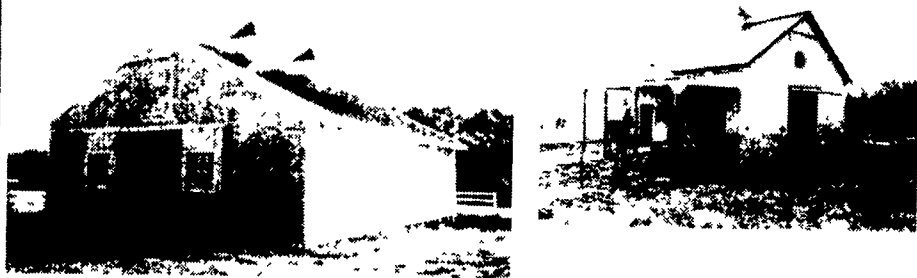
IN-DOOR ARENAS    HORSE BARNs    GARAGES    EQUIPMENT SHEDS  
 HAY BARNs    ETC.



Free Estimates!    **Stoltzfus Builders - Lititz, Pa.**    Financing Available!  
 Call Us At 717/664-3540

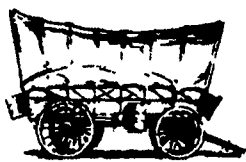
*Quality Craftsmanship!*  
 Building Excellence Since 1989!  
 www.conestoga-buildings.com

### Custom Horse Buildings



Stall Barns-Hay Storage  
 Riding Arenas-Run In Sheds

- Custom, CONESTOGA Building to Your Specifications
- Serving PA, DE, MD, NJ, VA, WV, and NY
- Company crews for quick service & quality construction
- Call for FREE estimate or to discuss your custom design
- Professional Sales and Marketing Team



C B Structures, Inc. producers of  
**CONESTOGA Buildings**



New Holland, Lancaster County, PA  
**1-800-544-9464**

**STAUFFER MACHINERY AND TOOL**  
 NEW AND USED WOOD MACHINERY

*we're doing it right*  
**EXTREMA**

Saw blades  
 Jig saw blades  
 Forstner bits  
 Spade bits  
 Sanding belts - discs  
 Router cutters  
 Air compressors  
 Air Hose and fittings

DeWalt  
 Makita  
 Porter-Cable  
 Hitachi

**QUICKNAIL**  
 SP100  
 \$329.99

**The ultimate framing nailer!**  
 1-7/8" - 4" toenailing cleats depth control, under 7 1/2 pounds case included Drives Senco Paslode and Quicknail SP series nails

All Fasteners  
 All Guns  
 One Stop

**Delivered Fast!  
 Top Quality!  
 Priced Right!**

**419 EAST CHURCH STREET • STEVENS, PA 17578**

**5 GRAIN EQUIPMENT**

60 ft Howe truck scales w/digital readout, in use, \$5,000. 717-734-3107 or 717-994-1853

New Fiberdome grain bin, 4.5 ton auger & motor, assembled, never used but not setup. 717-776-6540

J.R. Builders specializing in grain bin erections & tear down. Call for quotes. Also buyer of used grain bins. 717-733-6590.

NEW & USED Grain Dryers, G.T., M.C., Farm Fans & GSI. Call any time toll free, 877/422-0927

Hoover Construction Grain bin building & tear down. Call for prices. 717-354-3975

Grain cleaners DMC #40 good shape, \$975. Bazooka runs good, \$975. 610-286-9772.

**GSI**  
 Grain bins  
 Grain dryers

Check our prices before you order!

**Lambion Conveyor Elevators**

**Sukup**

Stirring machines  
 Grain cleaners

Jim & John

**Muncy, PA 570-584-2282**

# HERSHEY

EQUIPMENT CO., INC.

*Your Partner in Agri-Business*

We have what you need and if we don't we'll get it!

Distributors of the Finest Quality Materials Available

**Used Equipment For Sale ~ Great Prices!**

- ~ 2 - 130' Bucket Elevators
- ~ Ross Flaking Mill 18 x 36 with Steam Chest and Cooler
- ~ Scott 4 Ton Horizontal Ribbon Mixer
- ~ Sprout 38 x 12 Hammermill
- ~ Grain Aspirator with Fan and Filter
- ~ Molasses Blender
- ~ Many Screw Feeders, Conveyors, Drives and Motors
- ~ Eight - Compartment Drive Through Loadout Cluster with 6 - 25 Ton and 4 - 12.5 Ton Bins

**For More Information,**  
 Contact Mike Shearer 717-393-5807  
 or Toll Free 800-432-0988

Hershey Equipment Co., Inc. 255 Plane Tree Dr., Lancaster  
 www.hequip.com