

**used forklift sales,
service and rentals**



2-1996 Cat DP20, 4000lb, Diesel,
2 Stage Mast, 83"-130," Pneumatic Tires,
Great Condition, New Paint, \$6750

superior lift 717.338.1898

used forklift sales, service & rentals
Ephrata, Pennsylvania

**BUYING & SELLING USED
CONSTRUCTION EQUIPMENT,
NEW & USED PARTS &
ATTACHMENTS
CALL**

**H.E.L.P., INC.
(717) 469-0039
FAX (717) 469-7679**

Specializing In Caterpillar Parts
also available for Case, Fiat, IHC,
Komatsu, Deere, Etc.

**ALL PARTS AT DISCOUNT PRICES!
PARTS LOCATING SERVICES**

Call Us For Your Parts & Service
Manual Needs

**HEAVY EQUIPMENT
LOADER PARTS, INC.**

10070 Allentown Blvd., Grantville, PA 17028

Skid steer, New Holland,
L785 w/84" smooth bucket
& forks, 4000 hrs,
\$9,500. 410-0440-2833.

Bobcat 700 hydrostatic,
gas eng, 60" smooth
bucket, good cond, \$5,500.
410-440-2833.

Bobcat 331X mini excava-
tor, 576 hrs, \$16,500.
717-278-2244.

Wood paker firewood
shrink wrap bundling sys-
tem, model G-200, 200
bundles per hour, like
new, \$7,500. 570-465-2003.

Morgan log cutup hy-
draulic system, 48 in.
chain, saw bar 27 ft lug
trough w/2-20 ft decks
new in 2000, \$20,000.
570-465-2003.

'02 JD 120C excavator,
like new, \$85,000. '98 NH
555E backhoe, extend-a-
hoe, 4x4, \$25,000. '95 Case
650G dozer, new U/C,
\$30,000. '81 Mack RD686S
tri-axle, v.g. cond, \$20,000.
'02 Eager Beaver 20XPT
trailer, \$13,500. 1000 gal
self-contained field tank
\$1500. 570-386-2945

**1A CONSTRUCTION
EQUIPMENT**

**INDUSTRIAL
EQUIPMENT INC.**

215 South Washington Street, Boyertown, PA 19512

FORKLIFTS

SALES * SERVICE * RENTALS

NEW KOMATSU FORKLIFTS

ALL BRANDS USED/RECONDITIONED

GAS * LP * DIESEL * ELECTRIC

PARTS & SERVICE FOR ALL BRANDS

AERIAL & SCISSOR LIFTS FOR SALE & RENT

LEASING AVAILABLE

SPECIAL - NEW 27 x 48 PALLET JACKS . . . \$350.00



PHONE
(610) 369-9778



FAX
(610) 369-9858

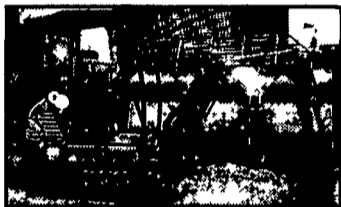
**Celebrating
Our 20th Year
1983-2003**

JERRE MARTIN REPAIR

391 N. Farmersville Rd., Ephrata, PA 17522
(Just minutes off RT 222)

717-859-3283 Toll Free 877-317-5348

**Celebrating
Our 20th Year
1983-2003**



'99 JCB 8015 mini-excavator,
like new \$11,500



Dyna Lift Telescopic Forklift, 36',
6000 Lbs. \$12,500



Fiat Allis FL5 Crawler Loader,
4N1 Bkt., Rebuilt Eng. \$13,500



KCB 530B Telescopic Forklift,
36', 6000 Lbs. \$14,000



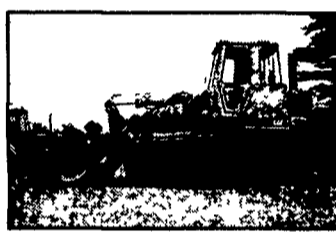
2000 Lull 644, 34' Telescopic
Forklift, 6000 Lbs. \$35,500



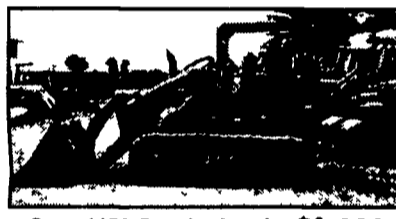
Case 455C Crawler Loader,
Good Cond. \$12,500



'98 Cat 953C Crawler Loader,
Cab, Air \$70,000



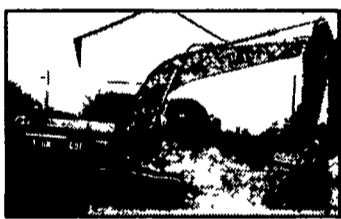
'91 Cat 963 Crawler Loader,
Like New U/C \$40,000



Case 1150 Crawler Loader \$6,900



JD 450C Crawler Loader, New
Paint, Rebuilt Components
\$13,500



'93 Cat 320N Excavator,
8.5' Transport Width, Quick Coupler
\$42,000



Cat D250B, 6x6
\$33,000



'80 Cat 955L Crawler Loader,
13X Series, 4N1 Bkt
\$19,500



DJB D25 Articulated Dump Truck
\$29,000



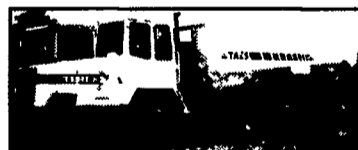
Komatsu D21S Crawler Loader
(Late Model) \$13,000



JD 450 crawler loader,
\$7,500



IR SD100D Roller \$32,000



Terex 3066
\$25,500



Kubota L3450 4x4 w/Kubota
3450 backhoe, 800 hrs \$14,500



Morbark Eeger Beaver 12" Chipper,
4 cyl. Cummins Dsl., \$7,900



JD 350 crawler loader, new tracks,
good cond. \$7,000



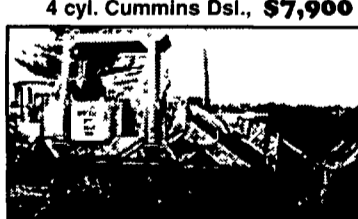
'96 Cat 953C, New U/C
\$70,000



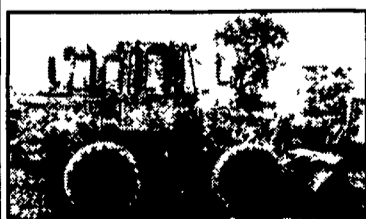
JD 570A, Excellent \$16,200



'94 JCB 214 Series II, 2800 Hrs., QT Bkt
\$22,500



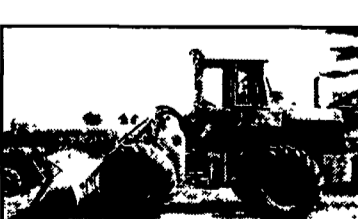
Cat 951C \$14,700



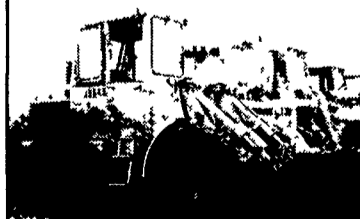
'89 JD 444C w/JRB Coupler
\$23,000



'82 Cat 945 Crawler/Loader, Rebuilt
Eng., New Undercarriage
\$25,000



JD 644 Loader \$13,500



JD 544 Loader \$12,500

'99 Cat 226 skid loader \$15,000
'99 Kobelco SK150LC Mark IV excavator \$52,000
'97 Bobcat 325 mini-excavator \$13,000

• Sales
• Service
• Rental Repairs

**WE ARE BUYERS FOR LATE MODEL
CONSTRUCTION EQUIPMENT NEEDING REPAIRS**
Road Service Available Now, Custom Repairs
On All Makes Construction Equipment