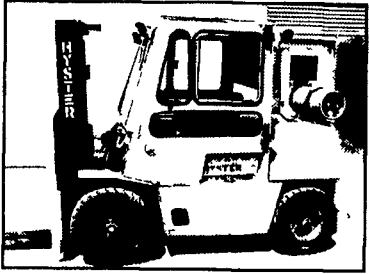


# LIFT-LINK

Your link to quality used equipment

Waynesboro, PA 1-877-570-4751



1989 HYSTER, 8,000#, LP Gas, Automatic Trans, Two Stage Mast w/Freelift, Solid Pneumatic Tires, Runs Excellent! ... \$6,950



'01 Case 1845C Uni-loader Skid Steer w/D125 backhoe attachment, approx 2720 hrs, good cond  
'00 Appalachian Trailer, good condition  
**All for \$16,500**  
If interested, call 717-464-9060, ext. 108  
**Ask for Lori**

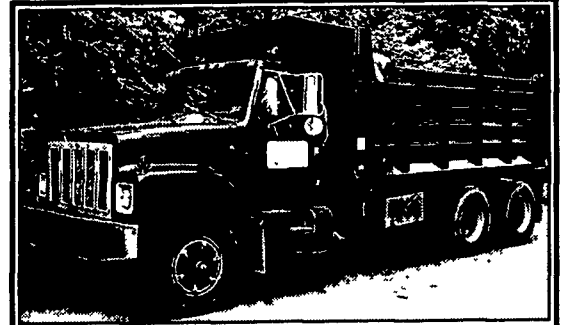
## 1A CONSTRUCTION EQUIPMENT

### Equipment

**CHALK**  
Sales - 150 Forklifts  
In Stock



410-686-6800  
BALTIMORE, MD



1989 IH new 15' Brandon dump,  
good condition \$16,000 OBO  
(717) 469-0712 or (717) 497-3388

## YANMAR ENGINES

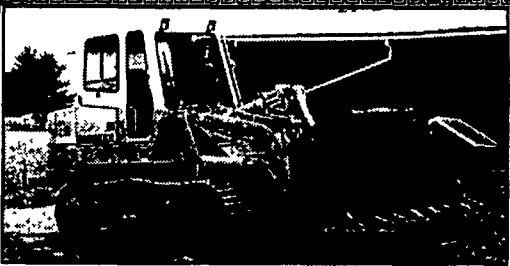
Used in John Deere Equipment  
Komatsu Wheel Loaders  
Takauchi Excavators  
Bomag Rollers  
JLG Aerial Lifts

And many other types of equipment.  
We offer replacement engines, parts and service. Also generator sets and water pumps, and rebuilding other engines.

### Southern End Mechanical Service

2443 Beaver Valley Pike  
New Providence, PA 17560

(717) 786-6855



**Liebherr 622 Litronic Trac Loader**  
L.G.P. Machine, Heat and Air, Cat Controls, 3,600 Hours, 2000 Year Model  
**\$59,500**  
610/255-0499

### USED & NEW PARTS PRICED RIGHT

Dismantling Over 650 Machines For Parts

Cat	IHC	Gallon
Case	Michigan	Wabco
John Deere	Hough	Dynahoa
Trojan	Terex	Koehring
Drott	Hein Werner	AC/Fiat Allis
	& Others	

**REPAIRS & REBUILDING AT OUR LOCATION.**  
Reliable Service & Exp. Personnel. Call Jim Shelly.

### NATIONWIDE PARTS LOCATING SERVICE

In addition to our own large inventory, we have two computerized parts locator services, nationwide & Canada, ready to serve you in less than a minute, over 600 used & new parts & equipment suppliers will receive your parts request. Parts are located easily & at substantial savings. Try Our Services. Parts Shipped Anywhere Direct To You.

All Parts Guaranteed. "We Return All Phone Calls"

### BALANDA EQUIPMENT, INC.

P.O. Box 407 • Route 29 • Palm, PA 18070  
Phone 215-679-3900 • Fax 215-679-8727

TOLL FREE: 1-800-322-8030



SALE  
OR  
RENT

Cat 941/951 CRL Loader  
8 Crawler Loaders To Choose From

### Heavy Equipment Loader Parts, Inc.

10070 Allentown Blvd, Grantville, PA 17028  
No Sunday Calls (717) 469-0039

### Jonestown Ag Repair & Supply Store

170 Old Rt 22, Jonestown PA 17038  
Darvin Weaver

717-865-0135 fax 717-865-0322



Large  
selection  
of Interstate  
Batteries

Mystik Luricants \* Roller chains  
\* Custom made hydraulic hoses  
\* Napa Belts & Filters

\* Hardware Skid loader attachments available  
\* Galaxy Skid loader ties & other brands

Complete Skid Loader Repairs Our Specialty

Our store replaces Skirksville Farm Supply

#8950 Case 1845C Uniloader, 1993, Aux Hyd, Drt. Bkt., 1238 Hrs ... \$12,900

# 8944 Case 580SL Loader Backhoe, 1999, 4WD, Cab, Ext., A/C ... \$36,900

#8968 Case 580K Loader Backhoe, 1988, 2WD, Canopy, Ex. **SOLD** ... \$13,900

#8944 Case 580SL Loader Backhoe, 1999, 4WD, Cab, Ex, A/C, 3000 Hrs. ... \$36,900

#8844 Case 580K Loader Backhoe, 1990, 4 WD, Cab, Ext. Hoe ... \$19,900

#8825 John Deere 310A Loader Backhoe, 1977, 2WD, Std. Hoe, Partial Cab ... \$8,900

#8570 Case 580SL Loader Backhoe, 1998, 4WD, Cab AC, Stereo, **SOLD** 10 Hrs ... \$36,900

#8484 Case 580SE Loader Backhoe, 1986, 4WD, Cab, Ext. Hoe ... \$17,900

#7870 Case 570LXT Tractor/Loader, 1996, 4 WD, Canopy, 3 Point Hitch, Filled Tires, 2550 Hrs ... \$24,900

## Vernon E. Stup Co.

5859 Urbana Pike, Frederick, MD 21701

301/663-3185

## WENGER'S OF MYERSTOWN

CONSTRUCTION EQUIPMENT & PARTS

800-552-5080 • Nights 717-272-9583

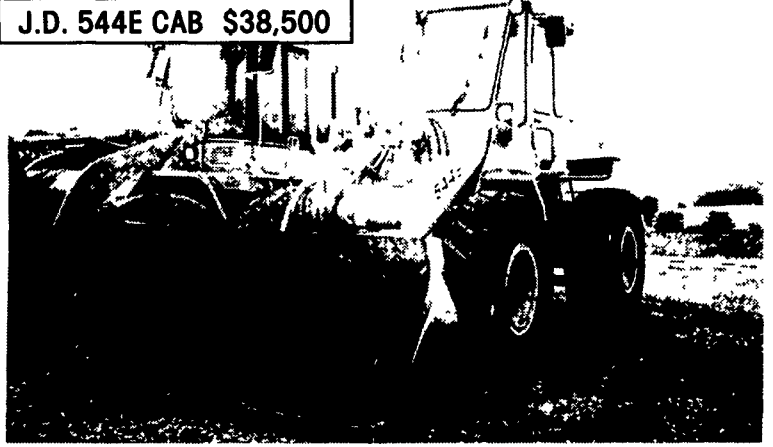
Rt. 501 South Myerstown, PA 17067

HOURS: Mon-Fri • 7:30-5:00 Saturday • 7:30-Noon

www.wengers.com

kbaum@wengers.com

J.D. 544E CAB \$38,500



J.D. 310D R.O.P.S STD,  
STICK, 2WD \$18,500

### Equipment Rentals

Contractors, Business Owners, Farmers & Others  
You Don't Have To Buy Excavating Equipment For Your Jobs

**Rent From Us For Less!**



CHIPPERS up to 18"



BACKHOES



TRACK LOADERS



PAVING ROLLER



DOZERS



EXCAVATORS



TRAILERS



VIBRATORY ROLLERS



SKID LOADERS



POST HOLE DIGGER



LASER GRADERS



REMOTE TRENCH ROLLERS



SKID LOADER HAMMER



DUMP TRUCK HAULING



BACKHOE w/HAMMER



EXCAVATOR w/HAMMER



MINI EXCAVATOR



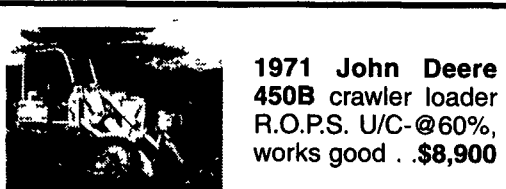
EQUIPMENT TRANSPORTING

More Machines Being Added, Call For Prices & Availability

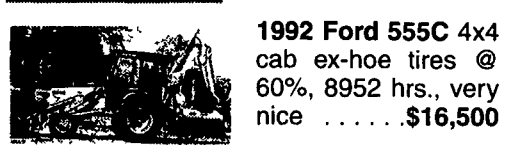
## STONEY CREEK CONTRACTOR SERVICES

415 Park Road, P.O. Box 327, Fleetwood, PA 19222

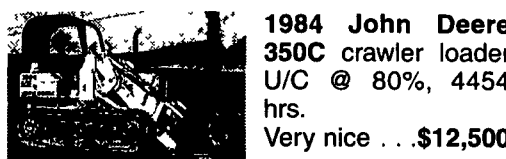
610/944-5332 • Fax: 610/944-1562 • 877/944-5332



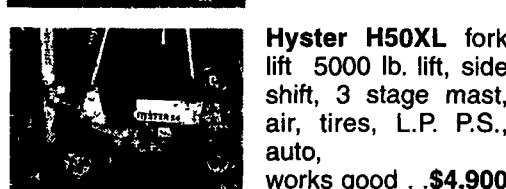
1971 John Deere  
450B crawler loader  
R.O.P.S. U/C-@60%,  
works good .. \$8,900



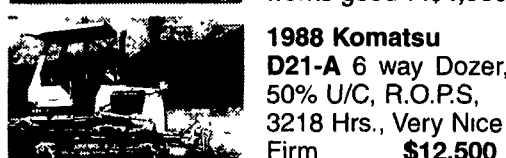
1992 Ford 555C 4x4  
cab ex-hoe tires @  
60%, 8952 hrs., very  
nice ..... \$16,500



1984 John Deere  
350C crawler loader  
U/C @ 80%, 4454  
hrs.  
Very nice ... \$12,500



Hyster H50XL fork  
lift 5000 lb. lift, side  
shift, 3 stage mast,  
air, tires, L.P. P.S.,  
auto,  
works good .. \$4,900



1988 Komatsu  
D21-A 6 way Dozer,  
50% U/C, R.O.P.S,  
3218 Hrs., Very Nice  
Firm \$12,500

### Dull Equipment Co., Inc.

1002 Rte. 501 S., Newmanstown, PA 17073  
Sales, Service and Rent • Financing Available

717-949-3451 • 717-629-7463

FOR MORE INVENTORY, PLEASE VISIT OUR NEW  
WEBSITE: www.dullequipment.com