

**PRODUCE MARKETS**

**Philadelphia Fruit**

**Terminal Market**  
**July 23, 2003**  
**Report Supplied By USDA**  
**CITRUS FRUITS - CLEMENTINES:**  
 OFFERINGS LIGHT. 5 lb ctns SF 32s 3.50 -**GRAPEFRUIT:** MARKET STEADY. ctns CA Shprs 1st Grade Red 23s 18.00 fr cond 14.00 27s 16.00 32s 16.00-18.00 mostly 16.00 36s 17.00 40s 15.00-16.00 mostly 16.00 48s 14.50-15.00 56s 13.00 White 36s 14.50-15.00 40s 14.00-14.50 -**LEMONS:** MARKET STEADY. ctns CA Shprs 1st Grade 140s 33.00 165s 29.50 Shprs Choice 95s 18.50-19.00 115s 20.00-22.00 mostly 20.00-21.00 140s 20.00-22.00 mostly 22.00 165s 23.50 200s 20.00 15 kg ctns SP 70s 13.00-14.00 80s 13.00-14.00 90s 16.00 100s 16.00-17.00 120s 17.00-18.00 140s 18.00 160s 18.00 -**LIMES:** MARKET STEADY. 10 lb ctns MX Seedless Type 42s 5.50-6.00 48s 5.00-6.00 mostly 5.00-5.75 54s 5.00-5.50 mostly 5.00 63s 4.00-5.00 mostly 5.00 40 lb ctns MX Seedless Type 150s 12.00-15.00 175s 12.00-15.00 mostly 12.00-14.00 200s 14.00-16.00 mostly 14.00-15.00 -**ORANGES:** MARKET STEADY. ctns CA Shprs 1st Grade Valencia 40s 15.00 occas higher 48s 16.50-17.50 56s 17.50-18.00 one label best 20.00 72s 14.50-18.00 mostly 15.50-16.50 88s 12.50-15.00 mostly 14.00 113s 11.00-13.00 mostly 11.00 138s 10.50 Shprs Choice Valencia 56s 11.00 72s 11.00 88s 11.00 113s 10.50 138s 10.00  
**BERRIES - BLUEBERRIES:** MARKET ABOUT STEADY. flts 12 1-pt cups with lids NJ lge 12.00 med-lge 9.00-11.00 mostly 10.00 -**MISC BERRIES:** MARKET AR LOWER. flts 12 6-oz cups with lids AR Blackberries 22.00-24.00 mostly 24.00 CA Blackberries 21.00 -**RASPBERRIES:** flts 12 6-oz cups with lids CA 18.00-20.00 mostly 18.00 occas low as 12.00 few 21.00 Gold 18.00-20.00 mostly 20.00 CD 26.50-27.00 -**STRAWBERRIES:** MARKET ABOUT STEADY. flts 12 1-pt bkts CA med-lge 14.00 one label 18.00-20.00 With Stems lge 16.00 flts 8 1-lb ctns with lids CA med-lge 14.00  
**MELONS - CANTALOUPS:** MARKET CA 9S HIGHER; OTHERS ABOUT STEADY. ½ ctns CA 9s 10.00-11.00 mostly 10.00 occas 9.00 12s 10.00-12.00 mostly 10.00 occas 9.00 15s 10.00-12.00 mostly 10.00 occas 9.00 24 inch bins MD 125s 120.00-140.00 130s 120.00-140.00 (CORRECTION FOR YESTERDAY'S REPORT: ADD 24 INCH BINS GA 90S 80.00-100.00) -**HONEYDEWS:** MARKET CA 5S AND 6S LOWER, OTHERS ABOUT STEADY. ¾ ctns AZ 5s 13.00 CA 4s 9.00-10.50 mostly 9.00 5s 10.00-11.00 mostly 10.00 6s 10.00-11.00 mostly 11.00 -**MISC MELONS:** OFFERINGS LIGHT. ¾ ctns CA Casaba 5s 12.00 Sharlyn 5s 12.00 Orange Flesh 5s

12.00 -**WATERMELONS:** MARKET ABOUT STEADY. 24 inch bins NC Red Flesh Seedless Type 165.00-175.00 (35-45S) SC Red Flesh Seedless Type 165.00-175.00 (35-45S) TX Red Flesh Seedless Type 165.00-175.00 (35-45S) per melon SC Red Flesh Seedless Type 12-18 lb 2.00-2.50 36 inch bins NC Sangria 240.00 (40-50S) SC Sangria 240.00 (40-50S) TX Sangria 240.00 (40-50S)  
**NON-CITRUS FRUITS - APPLES:** MARKET STEADY. ctns trypk CL cat I Fuji 72s 38.00 80s 32.00-34.00 Gala 70s 36.00 80s 34.00 90s 34.00 100s 29.00-31.00 NZ Granny Smith 100s 28.00-30.00 occas lower CONTROLLED ATMOSPHERE STORAGE ctns trypk WA WAExFcy Red Delicious 64s one label 24.00 80s 16.00-18.00 one label 22.00 88s 16.00-18.00 mostly 16.50-17.00 preferred labels 22.00 100s 15.00-17.00 mostly 15.50 113s 15.00-17.00 mostly 15.50 Golden Delicious 72s one label 26.00 80s 19.00-19.50 preferred labels 24.00-25.00 88s 18.50-20.00 mostly 19.00-20.00 one label 24.00 100s 16.50-18.50 mostly 18.00 some 20.00 113s 16.50-18.50 some 20.00 U.S. ExFcy Golden Delicious 80s 18.00 88s 18.00 100s 17.00 113s 17.00 lge ctns WA WAExFcy Golden Delicious 60s 28.00 80s 26.00 -**APRICOTS:** MARKET STEADY. 24 lb ctns lse WA WAOne Various Varieties # 7 18.00 # 8 15.00 Rival 1 ¼" min 20.00-21.00 -**AVOCADOS:** MARKET STEADY. ctns 2 lyr CA Hass 48s 47.00-48.00 mostly 47.00 occas 45.00 60s offerings insufficient to quote ctns 1 lyr FL U.S. Comb Various Greenskin Varieties 8s 11.50 few 12.00-13.00 9s few 12.00-13.00 10s 12.00-13.00 few including fr cond 9.50 12s 12.00-13.00 mostly 12.00 14s 12.00  
**-BANANAS:** MARKET STEADY. 40 lb ctns IMPORT 12.50 fair qual 11.00 sml 9.00 petite 13.50 40 lb ctns bagged IMPORT 11.00 -**CHERRIES:** MARKET ABOUT STEADY. 20 lb ctns WA WAOne Bing 10 row sz & lgr 42.00 11 row sz & lgr 36.00 -**FRUITS OTHER:** MARKET STEADY. ctns 1 lyr CL Apple Pears Shinko 14s 9.00 16s 9.00 FL Carambola - Star Fruit 20s 18.00 25s 18.00 30s 18.00 -**GRAPES:** MARKET ABOUT STEADY. 19 lb lugs bgd CA U.S. One Thompson Seedless lge 19.00-20.00 Flame Seedless lge 17.00-18.00 mostly 17.00 occas lower med-lge 14.00-16.00 mostly 15.00-16.00 med 12.00-15.00 White Seedless Type lge 23.00 Black Seedless med 15.00-18.00 mostly 16.00-17.00 one label best 21.00 sml-med 12.00-13.00 18 lb lugs bgd CA U.S. One Thompson Seedless exlge 24.00 lge 16.00-18.00 one label 20.00 med-lge 14.00-16.00 MX Thompson Seedless med fair cond 12.00 ord cond 9.00 White Seedless Type med 9.00-11.00 one label 13.00 sml-med 9.00-10.00 Red Globe med-lge fair appearance 13.00-14.00 -**KIWIFRUIT:** MARKET STEADY. Ctns 2

lyr CL Hayward 54s 20.00 17.00-20.00 9 kg ctns NZ Hayward 36 sz 20.00 10 kg ctns CL Hayward 36 sz 17.00-18.00 39 sz 18.00 -**MANGOES:** MARKET ABOUT STEADY. ctns 1 lyr HT Francis 9s 7.00-8.00 MX Keitts 7s ord cond 1.00-2.50 8s fr cond 4.00 ord cond 1.00-2.50 Kent 6s 4.00-5.00 8s 4.00-5.50 9s 5.00 10s 5.00 few 5.50 Tommy Atkins 8s 5.50 9s 6.00 50 lb ctns FL Green Cooking Type 50.00-55.00 PR Green Cooking Type 38.00 -**NECTARINES:** MARKET ABOUT STEADY. ctns 2 lyr trypk CA California Well Matured Various White Flesh Varieties 48s 16.00-24.00 25 lb ctns lse CA California Well Matured Various Yellow Flesh Varieties 64 sz 9.00 one label best 12.00 48-50 sz 13.00 Various White Flesh Varieties 40 series 17.00 56 sz 16.00-17.00 occas lower Spring Bright 56 sz 9.00-13.00 mostly 13.00 64 sz 9.00-10.00 mostly 9.00 48-50 sz 13.00 -**PAPAYA:** MARKET STEADY. 40 lb ctns DR Green Cooking Type 18.00-20.00 FL Green Cooking Type 18.00 4 kg containers BR Golden 9s 9.00-10.00 mostly 10.00 10s occas 8.00-10.00 -**PEACHES:** MARKET ABOUT STEADY. ctns 2 lyr trypk CA California Well Matured Various Yellow Flesh Varieties 36s 18.00-20.00 48s 13.00 Various White Flesh Varieties 42s 18.00 Zee Lady 42s 15.00 ½ buctns GA No Grade Marks O'Henry 2 ¼"up 16.00 NJ U.S. ExOne Various Yellow Flesh Varieties 2 ¼"up 16.00 2 ½"up 12.00-14.00 2 ¼"up 11.00 25 lb ctns lse CA California Well Matured Various Yellow Flesh Varieties 50 sz 17.00 56 sz 13.00 one label best 16.00 60 sz 12.00-13.00 70 sz 11.00-12.00 -**PEARS:** MARKET STEADY. 4/5 buctns wrapped CA U.S. One Bartlett 80s 35.00 90s 34.00 100s 31.00 110s 28.00 120s 25.00 36 lb ctns CA U.S. One Bartlett 80 sz 29.00 90 sz 28.00 100 sz 24.00-25.00 18 kg ctns AG CAT I Packham Triumph 70s

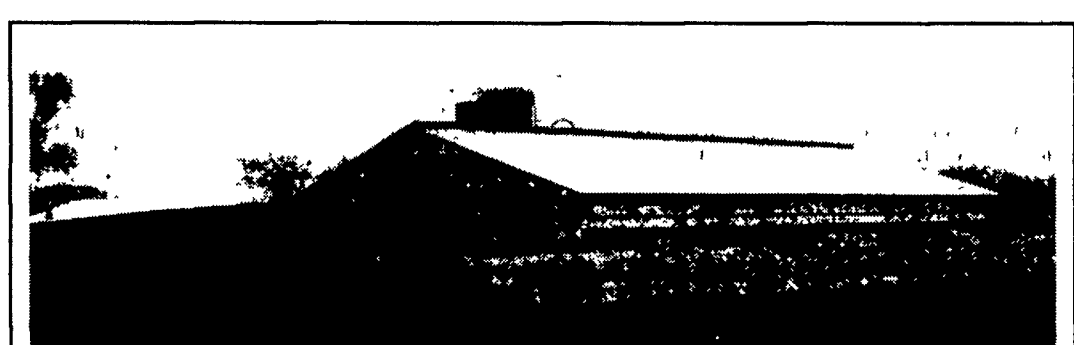
20.00 80s 20.00 -**PINEAPPLES:** MARKET ABOUT STEADY. ctns 1 lyr CR golden ripe 5s 14.00-16.00 6s 16.00 8s 15.00-16.00 ctns 2 lyr CR 12s 15.00-16.00 -**PLANTAINS:** MARKET STEADY. 50 lb ctns EC Green 16.00 fair qual 8.00-12.00 -**PLUMS:** MARKET ABOUT STEADY. 28 lb ctns lse CA California Well Matured Blackamber 30 sz 17.00-20.00 35 sz 17.00 one label best 20.00 40 sz 15.00-17.00 45 sz 14.00-15.00 some 17.00 50 sz 14.00 10.00 Catalina 35 sz 23.00 50 sz 14.00 Fortune 25 sz 21.00-23.00 30 sz 12.00-13.00 Hiromi Red 25 sz 15.00-16.00 30 sz 14.00-16.00 35 sz 14.00 45 sz 12.00 Laroda 35 sz 17.00-18.00

OFFERINGS INSUFFICIENT TO QUOTE.  
**-CABBAGE:** MARKET GREEN SLIGHTLY LOWER, OTHERS ABOUT STEADY. 1 ¼ bucrts & 50 lb ctns CD Round Green Type med 7.00 DE Round Green Type med 7.00 Red Type med 8.00 NJ Round Green Type med 7.00-8.00 Red Type med 10.00 NY Round Green Type med 6.50-7.00 mostly 7.00 Red Type med 9.00 OH Round Green Type med 7.00 VA Round Green Type med few 9.00 50 lb sks NY Round Green Type med-lge mostly 15.00-16.00 sks 24 2-lb filmbags CA Topped med-lge 15.00 sks 10 5-lb filmbags CA Topped med-lge 14.00-15.00 50 lb sks lse CA Topped jbo 15.00-16.00 mostly 16.00 MX Topped jbo 14.00-15.00 mostly 14.00 fair appear 12.00 ctns bchd CA Bunched 24s 12.00 ctns 20 1-lb filmbags CA Baby Peeled 13.00-14.00 -**CAULIFLOWER:** MARKET ABOUT STEADY. ctns flmwrpd CA 12s 10.00-12.00 9s 9.00-10.00 mostly 9.00 fair cond 6.00-8.00 ft ctns jacket pkd CD 12s 10.00 -**CELERY:** MARKET LOWER. ctns CA 2 dz 14.00-16.00 mostly 15.00 2 ½ dz 14.00-16.00 3 dz 15.00 filmbags 30s 18.00 OH 3 dz 13.00 -**CHINESE CABBAGE:** MARKET ABOUT STEADY. 30 lb ctns CA Nappa 15.00 50 lb ctns NY Nappa few 9.00-10.00 celcrts OH Nappa 12.00 -**CORN-SWEET:** OFFERINGS LIGHT. wbcrt MD White 4-4 ½ dz 12.00 Bi-Color 4-4 ½ dz 11.00-12.00 -**CUCUMBERS:** MARKET SLIGHTLY LOWER. flts/ctns flmwrpd CD CDOne Long Seedless med 12s few 7.00 WAXED 1 1/9 buctns/crts VA med 12.00-14.00 mostly

(Turn to Page A13)

**KEYSTONE CONCRETE PRODUCTS INC.**  
 477 East Farmington Rd.  
 New Britain, PA 17137  
 (717) 295-2822

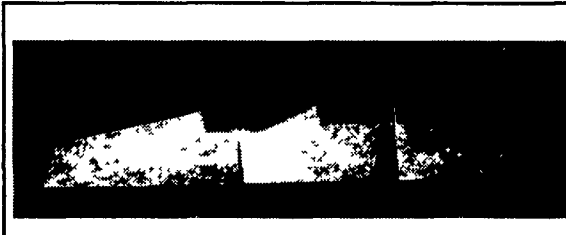
**"WAFFLE SLAT"**  
 Syn-Con Corporation



**Concrete Slatted Free Stall Barn**

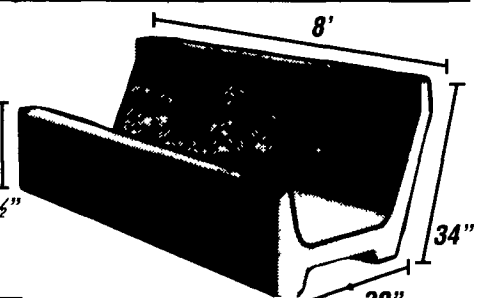


**Long Core Cattle Waffle Slats**



Hy-Capacity H-Bunks

**Precast Concrete T-Wall Bunker Silos or commodity buildings built to suit your needs. Bunkers available in 8 Ft. or 12 Ft. High**



Slant Back J-Bunks

End Sections Available For Feed Bunks

Give us a call for more information on hog, beef, dairy and heifer barns.

**BEAT THE HEAT**

**Due To Low Milk Prices Special Financing Available**  
 52" Coolair Poultry Fan 26,000 CFM  
 52" Coolair Dairy Fan 29,000 CFM  
 54" Coolair Greenhouse Fan 30,000 CFM

52" and 36" 6-Paddle Fans  
 Lots of Other Fans Available - Portable or Stationary  
 52" Fan: 26,396 CFM @ 401 RPM  
 Very Quiet Because of its Bearing Design.  
 Excellent For Tunnel Ventilation

Electric & Hydraulic Motors In Stock Lineshaft Kits Available

**Georgetown HYDRAULICS**  
 343 Christiana Pike  
 Christiana, PA 17509  
 Answering Service  
 1-610-593-2753