

Eighty-Four Livestock Auction

Eighty-Four, Pa.
Monday, July 21, 2003
Report Supplied By PDA

CATTLE 202...(PDA)...cows steady to 2.50 higher on Lean cows, bulls steady to 2.50 higher.

STEERS: Choice 1-2 1005-1095 lbs 74.00-79.00, one Select 1-2 68.00.

HEIFERS: Standard 1-2 53.50-55.50.

COWS: Breakers 75-80% lean 44.00-48.50, Boners 80-85% lean 38.00-44.00, Lean 85-90% lean 34.50-42.00, Shells 34.00 and down.

BULLS: Yield Grade 1 990-1525 lbs 53.00-60.00, Yield Grade 2 1025-2005 lbs 44.00-52.50.

FEEDER CATTLE: STEERS: few Medium and Large 2 690-885 lbs 70.00-80.00;

HEIFERS: Medium and Large 1 320-470 lbs 77.00-87.00, 505-615 lbs 72.50-81.00, Medium and Large 2 425-470 lbs 60.00-72.00, 550-820 lbs 56.00-71.00; BULLS: few Medium and Large 1 300-620 lbs 77.00-89.00, few Medium and Large 2 350-790 lbs 68.00-74.00.

CALVES 207...(All calves sold per cwt). VEALERS: Standard and Good 70-110 lbs 31.00-60.00, Utility 55-100 lbs

19.00-30.00. FARM CALVES: No 1 Holstein bulls 90-125 lbs 120.00-150.00, No 2 85-130 lbs 70.00-120.00; No 1 Holstein heifers 95-100 lbs 300.00-400.00, No 2 70-100 lbs 160.00-280.00.

Beef cross bulls and heifers 90-115 lbs 75.00-150.00, 160-285 lbs 77.00-96.00.

HOGS 11...BARROWS AND GILTS: 45-50% lean 230-255 lbs 40.00-43.00, 40-45% lean 300 & 305 lbs 36.00 & 38.00.

SOWS: one 1-3 415 lbs 27.00, one Medium 395 lbs 17.00.

BOARS: 115-705 lbs 4.50-18.00.

FEEDER PIGS 11...1-2 18 lbs 20.00, US 3 60-95 lbs 20.00-34.00 per head.

SHEEP 58...Slaughter lambs steady.

SLAUGHTER LAMBS: High Choice and Prime 105-128 lbs 96.00-101.00, Choice 45-50 lbs 92.50-104.00, 60-70 lbs 95.00-109.00, 80-100 lbs 95.00-109.00, Good and Choice 50-65 lbs 77.50-87.50.

SLAUGHTER SHEEP: 35.00-39.00, Yearlings 59.00-60.00.

GOATS 71...(All goats sold by the head with weights estimated). Kids: Selection 1 20-40 lbs 38.00-49.00, 40-60 lbs 57.00-66.00. Selection 2 20-40 lbs 27.00-35.00. Selection 3 20-40 lbs 15.00-19.00. Nannies: 70-100 lbs 25.00-49.00, 100 lbs and over 50.00-66.00.

Middleburg Livestock Auction

Middleburg, Pa.
Tuesday, July 22, 2003
Report Supplied By PDA

CATTLE 298...(PDA)...(Supply included 146 steers and heifers, 100 cows, 16 bulls and 36 feeder cattle...steers .50 to .75 higher, cows uneven, 1.50 lower to 1.50 higher, most strength on Lean cows, heifers steady to .50 lower, bulls steady

STEERS: High Choice and Prime 2-3 1265-1445 lbs 80.00-83.50, average 81.95, Choice 1-3 1050-1445 lbs 75.00-81.50, average 78.55, Select 1-2 70.50-76.50.

HOLSTEIN STEERS: few High Choice and Prime 2-3 1225-1420 lbs 72.50-74.75, Choice 2-3 1125-1585 lbs 64.25-69.75, average 66.55, Select 1-2 55.00-63.50, Standard 1-2 46.00-54.25.

HEIFERS: Choice 1-3 1050-1340 lbs 75.00-78.25, one 82.50, average 77.10, Select 1-2 69.75-76.00, Standard 1-2 50.00-65.00.

COWS: Breakers 75-80% lean 42.00-49.75, several high yielding 50.50-59.00, average 47.65, Boners 80-85% lean 39.00-46.25, average 43.00, Lean 85-90% lean 35.00-41.50, average 38.55, Shells 34.75 and down.

BULLS: few Yield Grade 1 1075-1755 lbs 54.50-59.50, Yield Grade 2 1010-1910 lbs 47.25-52.75, average 51.85.

FEEDER CATTLE: STEERS: Medium and Large 3 325-515 lbs 52.00-55.00, 585-655 lbs 51.50-53.50, 685-725 lbs 46.00-48.00; HEIFERS: Large 1 780-825 lbs 63.50-64.00, Medium and Large 2 370-455 lbs 54.00-62.00, 725-740 lbs 47.00-58.00, couple Medium and Large 3 360 & 650 lbs 50.00 & 51.00; BULLS: one Large 1 430 lbs 90.00, couple 750 & 780 lbs 58.00, few Medium and Large 2 400-535 lbs 61.50-68.00.

CALVES 233...VEALERS: Standard and Good 80-105 lbs 30.00-40.00, Utility 65-95 lbs 10.00-27.00. FARM CALVES: Holstein bulls 3.50 to as much as 20.00 higher, Holstein heifers steady...No 1 Holstein bulls 90-125 lbs 125.00-170.00 with a few down to 120.00 mostly 130.00-157.00, average 139.65, No 2 80-125 lbs 65.00-130.00, weaker calves down to 45.00; No 1 Holstein heifers 90-105 lbs 300.00-460.00, No 2 75-115 lbs 90.00-290.00.

HOGS 27...Barrows and gilts 1.00 to 3.00 lower, sows steady to 1.00 lower. BARROWS AND GILTS: 45-50% lean 215-270 lbs 37.75-41.75, one lot 44.00, few 40-45% lean 240-285 lbs 37.00-38.75.

SOWS: 1-3 355-450 lbs 25.00-28.75, 540-840 lbs 31.00-33.75.

BOARS: 395-590 lbs 6.75-7.75, 225-260 lbs 14.00-22.50.

FEEDER PIGS 0...NO MARKET TEST!

SHEEP 14...SLAUGHTER LAMBS: few Choice 55-70 lbs 80.00-101.00, couple 100 lbs 110.00.

GOATS 39...(All goats sold by the head with weights estimated). Kids: Selection 1 20-40 lbs 30.00-32.00 Selection 2 under 20 lbs 7.00, 20-40 lbs 22.00-37.00, 40-60 lbs 40.00-58.00. Selection 3 under 20 lbs 6.00. Nannies: 50-70 lbs 50.00-55.00, 70-100 lbs 70.00-76.00. Billies: one 95 lbs 82.00.

Grantsville Livestock

Grantsville, Maryland
Report Supplied by Auction
Saturday, July 21, 2003

STOCK STEERS AND BULLS: 200-500 lbs. 45.00-88.00.

STOCK HEIFERS: 35.00-78.00.

SLAUGHTER STEERS: Good to Choice, none available, Medium to Good 52.00-70.00.

HOLSTEIN STEERS: Good 50.00-61.00, Light 46.00-52.00.

SLAUGHTER HEIFERS: Good to Choice, none available, Medium to Good 50.00-65.50.

BULLS: Heavy 43.00-61.00, Light 40.00-47.00.

COWS: Utility Holsteins 45.00-57.50, Canners 38.50-44.50, Culls 37.00 and down.

BOB CALVES: 40.00 and down.

HOLSTEIN BULL CALVES RETURN TO FARM: 90-120 lbs. Up to 105.00.

HOLSTEIN HEIFER CALVES RETURN TO FARM: Up to 165.00.

BEEF CROSS CALVES RETURN TO FARM: Up to 125.00.

HOGS: Top Quality up to 48.00, Heavy up to 39.00, Light 25.00-36.00; FEEDER PIGS, BY HEAD: Up to 40.00.

SOWS: 24.00-39.00.

MALE HOGS: 4.75-21.00.

LAMBS: 70-85 lbs. up to 112.00, 85-125 lbs. up to 104.00, 30-60 lbs. up to 100.00, Culls up to 60.00.

SHEEP: Up to 35.00, FAT UP TO 24.00.

GOATS: Large 55.00-115.00, Medium 25.00-70.00, Small 10.00-44.00, all by the head, kid 3.00-50.00.

Feeder sale every second Sat. per month.

MARTIN'S TIRE & ALIGNMENT



We're Your Firestone Farm Tire Dealer!

Count on us year-round for:

- A complete line of Firestone farm tires
 - In the field emergency repair service
 - Implement and light truck tires in stock too!
- Many Other Tires In Stock - Call For Prices



FARM TIRES

Traction Field & Road

13.6 x 28	6 ply	\$205.00
18.4 x 30	6 ply	\$350.00
18.4 x 38	6 ply	\$370.00
20.8 x 38	8 ply	\$530.00

Firestone All Traction 23°

18.4R34	1★	\$550.00
20.8R38	1★	\$735.00
20.8R38	2★	\$840.00
20.8R42	2★	\$880.00

Firestone Radial 23°

18.4R34	1★	\$515.00
18.4R38	1★	\$540.00
20.8R38	1★	\$685.00
18.4R42	2★	\$670.00

Visit or call us today!

MARTIN'S TIRE & ALIGNMENT

Located in Churchtown
119 Water St., Narvon, PA 17555

717-445-4993



THE LEADER IN THE FIELD

C&M Farm Services Inc.

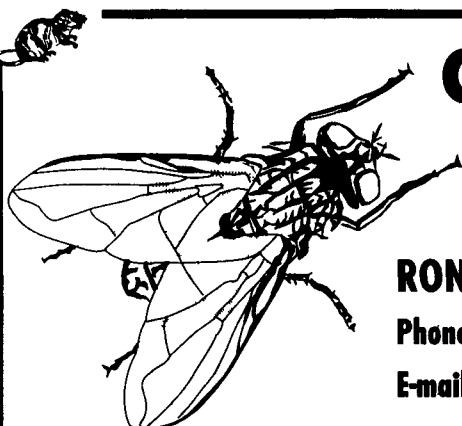
Elizabethtown • Pennsylvania

"Unique Farm Services"

RONI CLARK • Licensed & Insured

Phone: 717.361.6065 • Fax: 717.361.0867

E-mail: cnoflies@paonline.com



We offer the following services for the most complete pest control possible. Whether your need is to control pests, eliminate harmful bacteria, or encourage beneficial insects, we have the tools to help you.

FLY CONTROL

- Water-based liquid 3% Pyrethrins \$97 per gallon
- 36% PERMTH. \$170 per gallon
- P.B.O. \$120 per gallon
- Tempo W.P. \$47 per 420 gram

FLY PARASITES

15,000 Colony	\$15.00
25,000 Colony	\$20.00

Shipping is Additional

Flies and beetles are susceptible to many naturally occurring diseases. Applied twice a week, BALANCE (a naturally occurring fungus) works to reduce the adult fly & beetle population.

BALANCE Controls adult flies

Call for pricing

NEW KWIK BAIT
\$120/40 lb. pail

PLUS complete supplies for the do-it-yourselfer
..... SAVE TIME we can do it for you!



CONSIDERING EXPANDING YOUR FARM OPERATION?



TeamAg's Engineers and Nutrient Management Planners will give you the professional support you need for your expansion, regarding CAFO, Nutrient Management and local permits. Call us today for an estimate.

TeamAg, Inc.

901 Dawn Avenue, Ephrata, PA 17522
717-721-6795

- * Site Surveys * Grant Writing
- * Site Engineering and Manure Systems Design
- * Nutrient Management Planning
- * Precision Agriculture
- * CAFO (Concentrated Animal Feeding Operation) Permits
- * Natural Resources Management
- * Crop Management/Scouting/Soil Testing

www.TeamAgInc.com

Email: TeamAg@TeamAgInc.com



HIGH HORSEPOWER
FAMILY FUN & EXCITEMENT
Saturday, August 2nd

"THE JASPER EAST COAST SERIES"

Truck & Tractor Pulling Summer Championship

- Wild Wheel Standing Trucks
- 2-Wheel Drive Trucks
- 4000 Horsepower Modified Tractors
- Smoking Super Stock Tractors
- "New" Diesel Pick-up Trucks

Plus - Fan Appreciation Night - Lots of Gifts & Prizes

This Event Sponsored By:
"Thomas Trucking" of Willow Street

Adults \$10.00
Children 5-12 \$5.00
Children Under 5 • FREE

GATES OPEN AT 5:00
EVENT STARTS AT 7:00 SHARP

For More Info Call The Office At
(717) 859-4244
or track at
(717) 284-2139
1-800-344-7855

BUCK MOTORSPORTS PARK 10 miles S. of Lancaster on Rt. 272
www.buckmotorsports.com

SEE YOU AT THE BUCK!