

THE ANTIQUE DETECTIVE

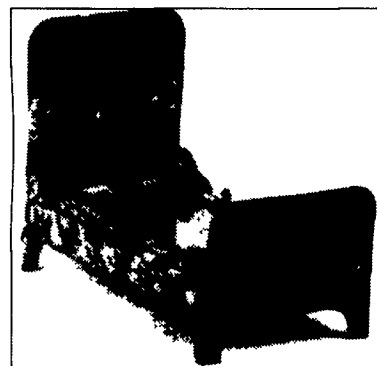
Anne Gilbert

**Many Types Of Figural
Candy Containers**

Old figural candy containers are seriously collected these days.

Once they were a flea market and garage sale staple. Not now with prices for rare, early examples selling at auction for more than \$1,500. However, there are still opportunities for beginning collectors selling for \$200 or less.

Figural candy containers had a humble beginning as souvenirs for the Philadelphia Centennial Exposition of 1876. They were small glass bottles in the form of Independence Hall and the Liberty Bell. By the late 19th century they were sold to travelers, again as souvenirs. Shortly thereafter they became an important advertising tool.



Flossie Fisher's bed candy container is lithographed tin. Photo credit: James Julia Auctions, Fairfield, Maine.

Hotels offered them in the form of clocks or suitcases with the name of the hotel either painted or embossed on the front. A hat-shaped container was used by political candidates.

When the automatic bottle-blowing machine came into use around the 1930s, hundreds of shapes were mass-produced. The horns, rabbits and trains were geared to the children's market. It is these that are still available to collectors.

Most were produced in colorless glass by the Victory Glass Company (1919-1930 Jeannette, Pa.)

One of the most popular, of their 65 different forms was a rabbit sitting on haunches, with gilt trim on upper part; green paint near the bottom.

Glass containers not only came in clear glass, but milk, amber, blue and red colors. Some, like the mantle clock container, first made in Western Pennsylvania, West Virginia, and Ohio, 1908-1912, was pressed milk glass and gilded, 3 1/2-inches high.

By the late 1920s radio and cartoon characters were popular figural candy containers.

The Amos 'n Andy in a taxi cab container, made by the hundreds is a rarity that could cost more than \$900 in a shop. The characters and wheels are painted.

Clear glass containers in the forms of trains, planes, cars and

even a hearse, can still sell at auction for \$200-\$300. However, when extensively painted they sell for \$600 and up.

There are even entire village buildings to collect. They have tin-lithographed exteriors for

\$100 a building, and up.

To appeal to little girls the "Flossie Fisher" comic was made as doll furniture size of colorful, lithographed tin. An auction price just for the 3/4-inch bed could bring \$1,000.

CLUES: Rarity and condition, as well as novelty determine the price.

Surprisingly enough there are still some of those 1876, Philadelphia Centennial, liberty bell containers around. They can sell at auction for \$100 each. An Independence Hall, California 1876 container could fetch \$150 at auction.

Tops were screw-on tin. Those made to be penny banks had slotted openings.

Reproductions of the most popular pieces have been made. In the 1940s, 1950s the gilt rabbit was reproduced by the Victory Glass company. It will be marked "Victory Glass Inc." In 1973 the Westmoreland Glass Co. made reproductions of their clock container, but in colored glass.

The end of the glass candy container came in the mid-1960s, when they were replaced by plastic.

Bottle auctions and internet bottle collectors sales are good places to look.

Lancaster Farming Antiques Center

PUBLIC AUCTION REAL ESTATE

**3BR CAPE COD AND MOBILE HOME
ANTIQUES - FURNITURE
HATTIE BRUNNER PAINTING
QUILTS - PERSONAL PROPERTY
SATURDAY, JULY 26, 2003**

8 A.M. - Real Estate 1 P.M. (Starting in garage w/tools)

LOCATION: 72 Park St., Reamstown, PA. From Lancaster, take 272 N. to Denver/Reamstown traffic light. Turn right on Church St. From the square continue for 3/10 mile. Turn left on Park St. to auction.

Real Estate consists of 1 1/2-story, cape cod, frame dwelling with vinyl siding, detached garage and 2-story 12'x18' storage building, both with vinyl siding. First floor has eat-in custom kitchen w/oak cabinets, dishwasher, spacemaker microwave, disposal, electric range and refrigerator; living room; dining room; bdrm; and full custom bath w/lots of storage. Second floor has two bdrms. with pine flooring, storage and balcony. Oil hot air furnace (5 yrs. old) with central air conditioning (3 yrs. old). Full basement with outside entrance, laundry hook-up, 100 amp elec. service, and elec. hot water heater. Replacement windows throughout, carpeting, hardwood floors and linoleum.



Also on property, 12' x 58' mobile home on block foundation containing eat-in kitchen w/elec. range and refrigerator, living room, 2 bdrms and bath w/laundry hook-up and dryer. Oil/hot air furnace, elec. hot water heater, carpeting, linoleum and large covered porch.

Both dwellings, garage and storage building are situated on a 65' x 300' lot in Reamstown, East Cocalico Township, Lancaster County, PA. Property has public water and sewer with separate hook-ups.

Note: Great in-law opportunity or live in one and rent other.
INSPECTION OF REAL ESTATE: By appointment. Call 717-336-5877 or 717-355-2444.

REAL ESTATE TERMS: 10% down day of sale, balance due at settlement on or before September 15, 2003.

FURNITURE: Early Grained Stepback Cupboard with 12-Pane Top; grained jelly cupboard; lidded-dry sink; mahogany slant front desk w/drawers; drop-leaf farm table; dovetailed bucket bench; pine corner cupboard; 6 dec. plank bottom fiddleback chairs; youth chair; wicker rocker; oak uph. highback rocker; cane rocker; pie safe; painted drop-leaf table; grained dovetailed blanket chest; decorated blanket chest w/drawer; min. walnut chest; grandfather's clock; cedar and metal wardrobes; 4 oak plank bottom arrow-back chairs; maple chest of drawers; carved desk w/drawers; heeled bench; leather arm chair; empire style chest of drawers; reed basket w/lid; child's rocker; 3 pc. maple BR suite; bookcases; plant stands; table w/drawer; Challenge treadle sewing machine; sleeper sofa; platform rockers; recliner; wall tables; blue topped kidney table; clothes trees; single beds/bedding.

ANTIQUES: Hattie Brunner Covered Bridge Winter Scene, 8 1/2" x 11" (sold at 12:30); early child's horse glider; E. Ingram shelf clock; German cuckoo clock; 12 green cherry blossom sherberts, cake plate and covered butter dish; pink Depression platter and dessert dishes; **Grape Carnival Water Sset (Northwood);** Carnival vase, plate, chicken on nest and candy; Silesia bowl; Austria vase; several glass baskets; Gaudy plates; Blue Willow plates (Staffordshire, Riley); **Flow Blue Handless Cups & Saucers and Plates;** Adams cups & saucers; Singanese plate; Japan Hitomi plates; English plates; German V&B Flow Blue plate; W.E. & Co. plates; German ribbon plate, creamers and sugars; pewter spoons; Vaseline cup; pink Feather bowl; adv. calendar plates; goofus bowls; porcelain mustard; Elmore & Forster ironstone; pressed glass bowls; cake stand; lots of gold-edged glassware; Independence platter and goblet; etched celery; compotes; **Yellowware Mixing Bowl;** washbowl set; salts; nappies; Peanut Butter glasses; Majolica; Nippon; Limoges creamer and gravy; milkwhite destroyer; Griswold; Wagner, Wapak and Erie cast skillets; market basket; Luke Gotshall folk art; old cookie cutters; clay marbles; battery-op. smoking bear toy; dec. doll cradle; doll highchair; ALPS tin horse & wagon; tin train; Japan animals; Burro cigarette server; Mayer deer ashtray; sweet potato whistle; child's duck iron; Shirley Temple creamers; Schraffts chocolate dishes; H. Laughlin creamer and pitcher; stoneware pie plate; S&P shakers; iron bulldog and horse; kerosene lamps, brackets, reflectors; agate; Longaberger basket; German and local postcards; hatpins; hair combs; crocks and jugs; galv. sprinkling can; electronic sterilizer; wooden ironing board; zinc lids; slaw board; coffee grinder; old puzzle peg game in box; metal banks, matchsafe, lizard & troughs; Princess House butter pats; 3-prong forks; wood-handled flatware; tin bread box; pictures and frames; adv. tins, pens and yardsticks; cobalt shot glasses; old bottles; pocket knives; pocket watches; lithographs; old books and Bibles.

QUILTS: Fine Crazy quilt; Schoolhouse; Basket; Log Cabin; White on White; knotted quilts; comforters; fancy work; sewing box; early Strawberry pincushion; Bakelite buttons and buckles; fancy thimbles; muslin, ticking; feather pillows; linen tea towels; aprons; tablecloths; towels; sheets; new afghans and crocheted toys; costume and sterling jewelry; stickpins; fur muff and collar; beaded leather purse; horse blanket.

PERSONAL PROPERTY: Jacobsen snowblower; Lawnboy and Snapper mowers; gas weedeater; hand tools; garden tools; step and ext. ladder; scythe; coal shovels; feeders; wheelbarrow; dehumidifier; upright freezer; dryer; Zenith color TV; Revereware; Ureka vacuum; Abalone China; Corelle; Pyrex; Fireking; Tupperware; Avon; roasters; pots and pans; kitchen utensils and appliances; bird bath; lawn chairs; laundry cart; homemade soap; lots of material; many more household goods.

Attorney: E. Richard Young, Jr.

Terms by:

Violet Heinsey Estate

Kenneth W. Heinsey, executor
Genevieve W. Kane, executrix
Food by St. John's U C C - Denver
NO OUT OF STATE CHECKS

LARRY W. HEINSEY
AUCTIONEER & ASSOCIATES
(717) 355-2444 • AU-003596-L

Public AUCTION Longaberger Baskets FRI., JULY 18, 2003 3:30 PM

(Regular auction, baskets at 6:30 PM)
Location: The Felch Auction Center at the Green Dragon Farmers' Market, Ephrata, PA

3:30 PM: Produce, flowers, antiques, collectibles and household goods

6:30 PM: Longaberger baskets - Many have accessories included - Anything from protectors to liners, lids, ties or runners - Some left handed baskets

J.W. Collection: 1988 Gathering Basket; **Horizon of Hope Basket:** 1995, 1997, 1998, 1999, 2000, 2002; **Christmas Collection:** 1988 Poinsettia, 1995 Cranberry, 1996 Holiday Cheer, 1997 Snowflake, 1998 Glad Tidings, 1999 Popcorn, 2000 Deck the Halls, 2001 Red Shining Star; **Holiday Hostess:** 1995; **Tree Trimming:** 1999 Peppermint; **Pumpkin Series:** 1995; **Booking Baskets:** 1995 Thyme, 1995 Lavender, 1995 Ambrosia; **Easter:** 1995; **All-American:** 1996 Summertime, 2000 Sparkler; **Father's Day:** 1995; **Feature Baskets:** 1997 Holiday Sleigh, 1998 Dash Away, 1999 Santa's Little Helper, 1999 Lots of Luck, 1999 Candy Corn; **Hostess Appreciation:** 1996; **May Series:** 1995 Tulip, 1996 Sweet Pea; **Century:** 2000 Cheers; **Sweetheart:** 1995 Sweet Sentiment, 1996 Bouquet, 1997 Gourmet Gathering; **Inaugural:** 1997, 2001; **Heartland:** 1988 Small Chore, 1996 Small Chore, 2001 Button; **Traditions:** 1995 Family, 1996 Community, 1997 Fellowship, 1998 Hospitality, 1999 Generosity; **Mother's Day:** 1995 Basket of Love, 1996 Vanity Basket, 1997 Timeless Memory Basket; **Woven Traditions:** 1995 Small Vegetable, 1995 Bread Warming Stone, 1995 Large Berry, 1995 Darning; **Shades of Autumn:** 1995 Basket of Plenty, 1996 Maple Leaf, 1997 Bountiful Harvest; **Various Baskets:** 1998 Measuring, 1988 Corn, 1996 Large Market, 1996 Tea, 1985 Large Fruit/Apple, 1988 Large Vegetable, 1988 Pie, 1995 Cake Basket w/Stand, 1985 Chore, 1997 Chore.

Terms: 10% buyer's premium
Cash or good PA check, Visa, MasterCard and now also American Express!

FELTCH AUCTION SERVICE
AH-000-263-L
717-733-9001 ~ 717-464-6992
Always accepting good clean consignments!
Let's have sale - Your place or ours!

PUBLIC AUCTION PERSONAL PROPERTY ANTIQUES - FURNITURE DANBURY MINT DOLLS WINROSS TRUCKS TUES., JULY 29, 2003 1 P.M.

LOCATION: 250 South Reading Rd., Ephrata, PA Traveling Rt 272 south (Reading Rd) past Ephrata Shopping Center to 2nd light Property on corner of Oak St & Rt 272 (S Reading Rd)

FURNITURE

Cherry oval ext table w/6 chairs, (2) Library tables, Mahogany combination slate top desk & bookcase, Modern dry sink & hutch, Lighted curio cabinet, (2) Deacon benches, Upholstered rocker w/hassock (like new), Lift chair, Rocker-recliner, Plank btm rocker, Day & sofa beds, Lg square coffee table w/glass top, Knotty pine cupboard, Table & benches, Flattop trunk, Cedar chest, High back wood benches, Rocking chair, Quilt rack, (2) Display cases, End tables, Room divider, Entertainment center, G.E. & Magnavox color TVs w/remotes, Sony VCR player, Sound design cass player, Misc chairs, Magazine rack, Organ, Wooden butter churn, Old gas cook-stove, 3 Door ice chest, Shelving, Sled, 1 Seat school desk, Stacking chairs, Chaise longue chair, Ice chests, Mulch mower, 4 Pc wicker set, Wicker swing, Portable sewing machine

BALDWIN GRANDFATHER'S CLOCK - DOLLS

Approx 20 Danbury Mint dolls inc 4 Shirley Temple, Madam Alexander; Gerber & John Wayne dolls; Wicker baby coach & stroller, Baby bassinet, Doll benches, Rockers & cradle

WINROSS TRUCKS & TOYS

Approx 70 Winross trucks (many locals), 15 Hess trucks, 1 set of Ertl banks, 80 Pc silver star train, **Radio controlled 1:6 scale 3 spd. PT cruiser (new in box);** Battery operated VW car, Child's wooden blocks, Tarzan books, Misc other toys, Buttons, Fur coats - gloves

PERSONAL PROPERTY - ANTIQUES

GLASSWARE - COINS
Aunt Jemima & Mr Peanut banks, Dog doorstops, Painted saws, Painted can, Cast iron horse & wagons, Kettle & trough; Agate milk pitcher & teapot, Pabst Blue Ribbon 3D picture, Shirley Temple items, Coke trays, B&G, Hummel & Norman Rockwell plates, Depression Santa Claus
Signature china (service for 8), 4 pc ironstone transfer set, 3 pc & 7 pc vanity set, Blue Bird milk pitcher, Asst carnival glass, Ruby basket, Opalescent hobnail, Earthen pie plates, Glass baskets, Misc red-blue-amber-clear, Pressed glass, Goblets & misc stemware, Bells, Mugs, S&P shot glasses, Ceramic Christmas trees & churches
Silver dollars, Silver halves, Quarters & dimes, Buffalo nickels, 1848 lg cent

NOTE: Auction to begin w/small items followed by dolls & Winross trucks & furniture Terms are cash or PA check Food Stand

Terms By:

ROBERT & MARY MELLINGER
717-733-4447

Auction Conducted By
Randal V Klme,
Roy E Good Jr
Keith Snyder Auctioneers
Lic #499, #2116, #3433
717-445 4309

