

www.kbford.com

Your Internet Connection

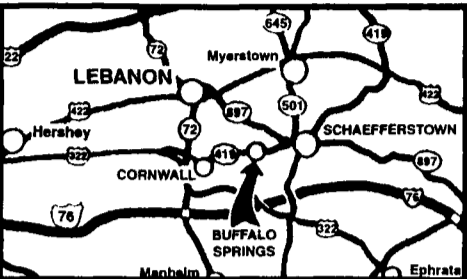
SPECIALIZING IN NEW & USED SUPER DUTY PICKUPS

KELLER BROS.

(Buffalo Springs) Lebanon, PA

717-949-2000 or 1-800-363-2767

LEBANON COUNTY'S HEAVY DUTY TRUCK HQTRS.



FAMILY OWNED AND OPERATED FOR OVER 80 YEARS

Over 100 Clean Pre-Owned Vehicles In Stock At All Times!!



2002 CHEV S-10 CREW CAB
4.3L V6, AT, A/C, PW, PL, 4x4, Local 1-Owner Trade
\$18,995

1987 FORD E150 CLUBWAGON
7 Pass., 8 Cyl., AT, A/C
Reduced! \$3,775



2001 FORD F250 CREW CAB 4x4
7.3 Diesel, XLT, AT, A/C, PW, PL
\$31,995



2000 FORD F650 BOX TRUCK
Cat Diesel, AT, 24 Ft. Box, Hyd. Lift, 26,000 GVW, Air Brakes, Only 9,000 Miles
REDUCED \$31,921



2001 FORD F350 XL Dump Truck
5.4 V8, 5-Spd., AM/FM/Stereo Only 7,000 Miles. Ready to Work
\$25,900



1998 FORD EXPEDITION 4X4 EDDIE BAUER
V8, A/C, Full Power
\$15,795



2001 FORD SPORT TRAC 4x4
4.0L AT, A/C, PW, PL, Alloy Wheels, Sharp
Only **\$20,773**



2001 FORD RANGER SUPER CAB EDGE
V6, AT, A/C, 4x4, CD Player, 33,000 Miles, Very Clean
\$14,929



2001 FORD F150 SUPERCAB XLT
4x4, Off Road Pkg., 5.4 V8, AT, A/C, PW, PL
\$23,335



NEW 2003 FORD F350 CREW CAB
V10, AT, Full Power, 4x4 Cab & Chassis Only.
\$28,400



2000 MITSUBISHI MONTERO SPORT
V6, AT, A/C, PW, PL, Leather, CD, 1-Owner, Like New
\$16,975



2000 FORD F250 SUPERCAB, 4x4, XLT
7.3 Diesel, 6-Spd., A/C
\$20,550



2003 FORD E550 CUT AWAY CHASSIS
7.3L Power Stroke Diesel, AT, A/C, PW, P. Seats, Chrome Wheels, MSRP \$37,165
NOW \$29,665
Save \$7,500



1995 DODGE RAM 1500
Reg. Cab. 4x4, SLT, V8, AT, PW, PL
\$8,808



1997 FORD F150 SUPERCAB 4x4 LARIAT FLARESIDE
5.4 V8, AT, A/C, PW, PL
\$16,595



2001 FORD F150 SUPER CAB LARIAT
4x4, 5.4 V8, AT, A/C, PW, PL, Leather, 21,000 Miles, Fiberglass Cap
Only **\$25,773**



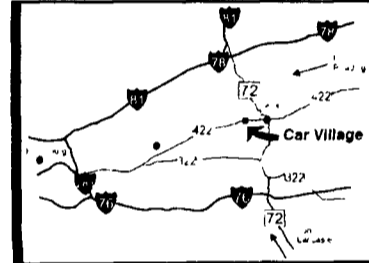
Nicest Trucks In the East • Nicest Trucks In the East • Nicest Trucks In the East • Nicest Trucks In the East • Nicest Trucks In the East • Nicest Trucks In the East

www.useddieseltruck.com

2300 W. CUMBERLAND ST. (Rt. 422)
LEBANON, PA 17042
(Across From Lebanon Valley Mall)

CAR VILLAGE

1-800-650-1420
717-274-2000



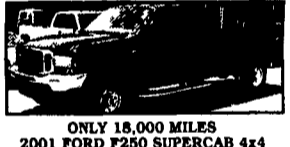
4x4 SUPER CAB SHORTBED
99 FORD F250
Powerstroke Turbo Diesel, 8 Sp., A/C, Vinyl Seat & Floor \$22,900



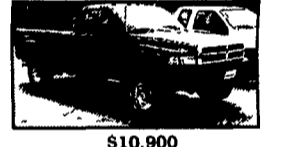
\$5,900
99 FORD F250 4x4
V8 Auto, Tool Boxes, Runs Well



\$12,900
99 CHEVY 2500 SUPER CAB 4x4
6.0 Litre V8, Auto, A/C, All Power Equip., 8 Foot Bed, Alloy Wheels



ONLY 15,000 MILES
2001 FORD F250 SUPERCAB 4x4
Almost New Loaded XLT, 5.4 Triton V8, Auto, A/C, Loaded XLT, Comfortable 40/20/40 Seat, Limited Slip Axle
Remainder New Warranty



\$10,900
97 DODGE 2500 4x4
Lots of Truck for a Little Money Heavy Duty 3/4 Ton, 360 V8, Auto, A/C, Tow Pkg, Alloy Wheels



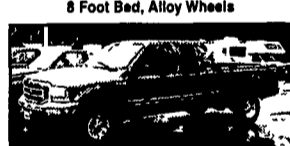
F350 CREWCAB
99 FORD F350 XLT
Powerstroke Turbo Diesel, Auto, A/C Tow Pkg Loaded XLT, 62,000 Miles



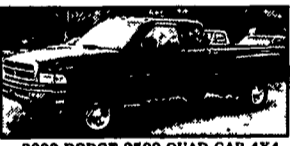
CUMMINS DIESEL
98 DODGE 2500 QUAD CAB 4x4
24 Valve Cummins Turbo Diesel, Auto, A/C, Laramie SLT Pkg., 46,000 Miles



5SP CUMMINS
2001 DODGE 2500 QUAD CAB 4x4
Very Nice, Only 30,000 Miles, Remainder New TK Warranty, 24 Valve Cummins, Loaded Laramie SLT, Alloy Wheels, Tow Pkg



2000 FORD 350 SUPER CAB 4x4
Power Stroke Turbo Diesel, Auto, A/C, Tow Pkg Very Clean Sharp
\$27,900



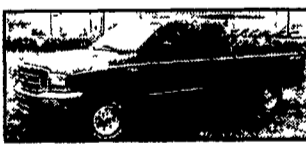
2000 DODGE 2500 QUAD CAB 4x4
Local 1 Owner Trade, 360 V8, Auto, A/C, Loaded, Laramie SLT, Asking \$18,900



4x4 CREW CAB HAULER
2000 FORD F350
The Only Way to Tow Powerstroke Turbo Diesel 6 Sp. Only 49,000 Miles, Remaining New TK Warranty, Loaded XLT, Alloy Wheels, Real Nice



6 SP. CUMMINS
2001 DODGE 3500
QUAD CAB DUALY 4x4
Very Strong, 24 Valve Cummins, loaded with Options, Tow Pkg



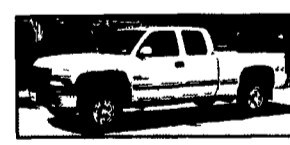
\$23,900
99 FORD F250 SUPER CAB 4x4
Short Bed, Nice to Drive, Loaded XLT, Powerstroke Turbo Diesel, Auto, A/C, Tow Pkg Alloy Wheels, New Service & Insp



5SP CUMMINS
98 DODGE 2500 4x4 PICKUP
Heavy Duty 3/4 Ton Impressive Cummins Turbo Diesel, A/C, Tow Pkg



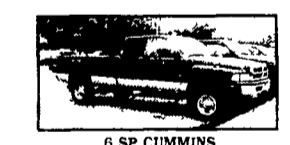
4x4 CREW CAB DUALY
2002 FORD F350
Loaded XLT, PowerStroke Turbo Diesel, Auto, A/C Comfortable 40/20/40 Seat, Alloy Wheels, Fact Tow Pkg Only 7,700 Miles



SHORTBED SUPER CAB
2001 CHEVY 2500 4x4
Nice Driver, Very Clean Duramax Diesel, Allison Auto, Loaded, All Options, Alloy Wheels, Tow Pkg., Limited Slip Axle



4 DOOR SHORTBED
2000 FORD F350 XLT 4x4
Nice To Look At & Very Nice To Drive Powerstroke Turbo, Diesel Auto A/C Loaded XLT, Alloy Wheels Tow Pkg



6 SP CUMMINS
2002 DODGE 2500 QUAD CAB 4x4
Very Strong Truck Loaded Laramie SLT A/C Overhead compass Remaining Fact Warranty

FLATBEDS, WORK & DUMP TRUCKS



STAKE BODY
99 FORD F350
Very Clean, Only 48,000 Miles, 5.4 Triton V8, 5 Spd., A/C, New Service 7 Insp Ready to Work
\$18,900



4 DOOR MECHANIC'S TRUCK
2000 FORD F350 4x4
Just What Your Business Needs Only 48,000 Miles Powerstroke Diesel, AT, 8 Ft Body with Flip Open Lids



17 FOOT CUBE VAN
97 FORD E-450 SUPER DUTY
Heavy 14,000 GVW, Rear Lift Gate Powerstroke Turbo Diesel, Auto, AC Local Trade, Only 68,000 Actual Miles



ALUMINUM ROLLBACK
2000 FORD 550 SUPER DUTY
18 Foot Body, Powerstroke Turbo Diesel GSP, Loaded XLT, Heavy 19,000 GVW Keyless Entry, Tool Boxes, Wheel Lift Remaining New Tk Warranty



4x4 L-PAK DUMP TRUCK
2002 FORD 550
Rare Find PowerStroke Diesel Auto A/C L Pak, Tool Box, Tow Pkg Only 21,000 Miles



CAB OVER DUMP
98 CHEVY W-4
Only 45,000 Miles, Diesel Power, 5 Sp Manual, 12 Foot Steel Bed, Only 45,000 Miles



68,000 ACTUAL MILES
88 DODGE DUMP TK
360 V8 Auto, 2-3 Yard Dump Body, Runs & Drives Very Nice
\$7,900



DIESEL CARGO VAN
2001 FORD E350 SUPER CARGO VAN
Very Clean Inside & Out, Powerstroke, Auto, A/C, Heavy 9,400 GVW, Only 40,000 Miles, Remaining New Tk Warranty



4x4 550 CREW CAB
2001 FORD SUPER DUTY
Very Nice, Only 15,000 Miles, Powerstroke Turbo Diesel, AT, A/C, 13 Foot Bed, Tool Boxes



4x4 CHASSIS
2002 FORD SUPER DUTY
Like New, Only 9,000 Miles, Powerstroke Diesel, Auto, A/C, Alloy Wheels, Heavy 17,500 GVW



SUPER CAB DUMP
2000 FORD F350
A Very Desirable Truck, Clean, Only 65,000 Miles, V10, Auto, A/C, 9 Ft Body Insp. & Services
\$21,900



550 CHASSIS 4 WHEEL DRIVE
Long 201 WB, Powerstroke Turbo Diesel, Auto, A/C, Loaded XLT, Like New, Remaining New Tk. Warranty
Only 9,000 Miles



350 4 DOOR CHASSIS, 4 WHEEL DRIVE,
2001 FORD XLT
Waiting for your Body, Only 19,000 Miles Powerstroke Auto, A/C, Heavy, 11,500 GVW, Dual Ram Wheels



4x4 CHASSIS
2001 DODGE 3500
Short Wheel Base 60", C/A, 24 Valve Cummins Turbo Diesel, Auto, A/C, Limited Slip 4 10 Axle



2003 FORD 750 CHASSIS
Only 11,000 Miles, 33,000 GVW, Diesel Power, 7 Sp Trans., A/C, 2 Fuel Tanks, Brand New Dealer Cost \$38,800 Our Price \$35,900

Nicest Trucks In the East • Nicest Trucks In the East • Nicest Trucks In the East • Nicest Trucks In the East • Nicest Trucks In the East • Nicest Trucks In the East