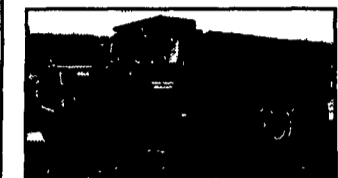




2000 Freightliner FL70, Quad Axle Dump, Cat C12 Eng. Fuller Trans, 2 Stage Jake, All Alum. Wheels, 17" Steel Dump, 78,000 GVW  
**\$66,750**



1998 Volvo WG64F, Cummins 330 hp Dal. w/Fuller 8LL Trans., Hendrickson 46K Rears, Rogers 16" Steel Dump, Triaxle  
**\$48,250**



1982 Mack RD6865 Dump, 64,507 Original Miles, Air Brakes, 4x2 Trans., 300 Mack Engine, 40"x15" Steel Box, 50% Wear Plate, 40,000 lb Rears, 18,000 lb. Front, Rear Air Hookup.  
**\$12,900**



1997 Genie Up And Over, 34', Elec. Lift, OSHA Cert.  
**\$13,250**

**WJM Trucks and Equipment**  
Sales & Rentals

570/385-5065

If You Need It, We Will Find It For You!

52 ZERBE STREET, CRESSONA PA, 17929  
OTHER CONTACT NUMBER: WILLIAM J MILLER JR. 570/617-1351

**We Accept All Reasonable Offers**



1997 International, 4700, w/MT 8,000#, Art Crane, w/Utility Body, 7.3 Ltr. Turbo DSL, 6 Spd., A/C, 25,500 GVW  
**\$31,250**



2000 Ford F450 Mechanics Truck, Power Stroke Dal., Auto. Trans., 12' Utility Body w/2700 lb. Liftmoore Crane.  
**\$30,750**

**Other Inventory**

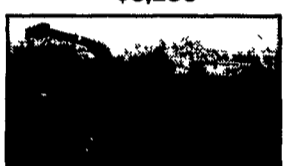
- 2000 Multiquip MB25 Electric 1" Rebar Bender ..... \$4,250
- Assorted Electric WB Floor Scrubbers ..... Call for Pricing
- Other Small Inventory Avail ..... Call for Listings
- 1999 Ingersoll Rand 185 CFM Air Compressor, JD Diesel 330 Hrs ..... \$7,800
- 2002 Ingersoll Rand 8 KW Generator, Brand New Factory Warranty Diesel Engine ..... \$5,200
- 1999 Wacker RT560 WB Trench Compactor, 22" Pad Drums, Remote, 876 Hrs. .... \$9,750
- 1993 Target Pro 65 H 4-Cyl. Dal., 36" Blade, Water Controls, 1000 Hrs. .... \$3,250
- 96 JLG CM2046 Int. Scissor 20' Lift Electric .. \$4,500



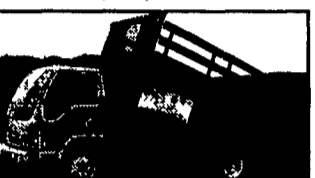
1990 Ford L8000, DSL, 6 Spd., GVW 33,000#, 28' Flatbed, Runs Great, Great Hay Truck  
**\$7,250**



1994 Chevy 3500, New 7.3 Ltr. DSL Eng., 5 Spd., w/Overdrive, Cheap Work Truck, Like New Utility Body  
**\$6,250**



Morbark Model 290 Chipper, Cummins 3.6 Dal., 886 Hrs., Fully Reconditioned, Newly Serviced, Sharp Blades  
**\$14,000**



1999 Isuzu, Stake Body Dump, 5.4 V8, Auto, Only 24,000 Mi., New Tires  
**\$22,250**



1999 Ford F250 Crew Cab 4x4 V10 engine, Auto. Trans., 8' Box, Tow Pkg., Straight Truck  
**\$18,500**



P&H D651 Carry Deck Crane SNG0117 Dual Fuel Powered, Equipped with 4 Section 32' Boom, Front Wheel Drive, 4 Wheel Steer, Anti-Two Block Warning Device, Electric LMI, Front and Rear Tow Lugs, 8.5 Ton Hook Block, 678 Hours, Headache Ball  
**\$25,350**



Case 1845C Skid Loader, New Tires, Completely Serviced, Runs Great  
**\$10,700**



Only \$4,500

1990 Kenworth Model T400 Tandem Axle Tractor. 3176 Cat Engine (325 hp), RTO 12609B Trans., DS402 Rears with 4:11 Ratio, 12,000 lb. Frt. Axle, 38,000 lb. Rear Axle, 50,000 lb. GVW, 462,875 Miles, A/C, P/S, 4 Spring Reyco Suspension Hi Tread 11R22.5 Tires on Budd Wheels. Immaculate condition and running but motor has a noisy top end.

**Camden Trucks**

856-456-4030 215-925-0322



**GREAT PRICE**

1988 GMC Fleetstar, V8 Gas Eng., P/S, 5 Spd., 2 Speed Gear Box, 46,000 GVW, Naugahyde 18' x 40" Grain Dump, Alum. Tail Gate, Must Go. \$2,800

**Phone 717-764-3477**



\$16,300 OBO

2000 Ford E350 with Supreme 15' Hi-Cube. 11500 GVW, 5.4 litre V8, A/C, Load Ramp. 53,961 Miles (717) 951-6080



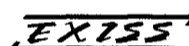
**YARNALLS Equipment Co.**

4171 Horseshoe Pike (Rt. 322), Honey Brook, PA 19344

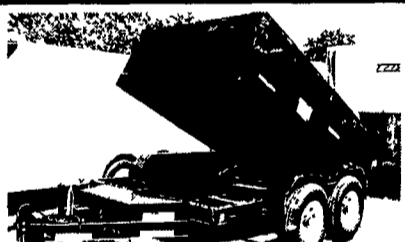
Call Today Toll Free:

866-228-0408

Over 100 Trailers In Stock



**EXISS In Stock • EXISS In Stock • EXISS In Stock • EXISS In Stock •**



Big Tex 10K Dumper w/Skid Loader Ramps, Heavy Duty 6x10 Box \$5,250



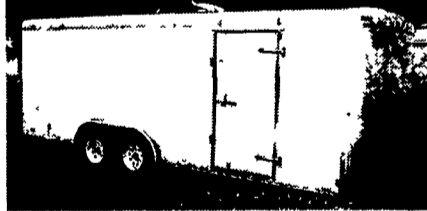
Big Tex 7K 5x10 Dumper, Black \$3,936



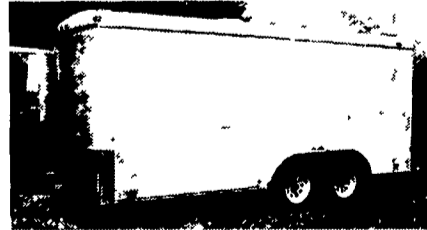
Pace America 6x10 Dump Trailer, Black, Great Price \$4,078



Continental Cargo CC818TAZ, 7K GVW, Black, Dbl. Rear & Side Doors, Vent and Lites, Stone Guard \$4,575



Continental Cargo CC820TAZ, Dbl. Rear Doors, Side Door, Stone Guard, Vent & Lites \$4,900



Continental Cargo CCT16TAZ, Ramp, Rear & Side Door, White \$4,320

**BISON TRAILERS IN STOCK**



Bison 7x14 Stock 7 high, green, Ready To Go \$4,652

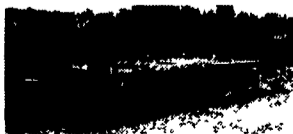


Bison AlumaSport 2-Horse, white w/gold grafix \$6,920



Bison Stock 7x16 7 high, red w/spare \$5,275

**USED TRAILERS**



18 Ft. Deckover, 10K



1994 Pacer 16 Ft.



1996 Big Valley 3 Horse Gooseneck



**REESE**



**Financing - Trade Ins - Repairs**

Hours: Mon., Tues., Wed., Fri. 8:30-5:00;

Thurs. 8:30-7:00; Sat. 9:00-1:00 P.M.

8 Miles Off Exit 22 PA Turnpike



**SNOWPLOWS**

**Used Truck Bodies**

**SPECIAL 1998 22' Morgan w/Lift Gate**

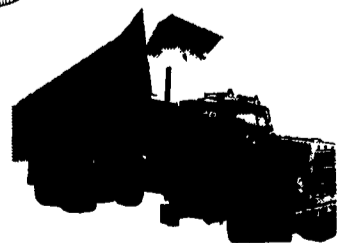


Installed on NEW or Old Truck "Makes your Old Truck Look Like NEW!"  
• Dry Van Bodies 10' to 28' • Reefer Bodies • Flat Bodies (Completely Refurbished Bodies in Most Cases)  
**Same Day Service!**

Phone 717-664-1696  
**CHARTER ENTERPRISES, LTD.**  
270 Hostetter Road, Manheim, Pa



343 Christiana Pike  
Christiana, PA 17509  
Answering Service 1-610-593-2753



**Wetline Installation**

**Complete Hydraulic Cylinder Repair Service, Rebuilding and Sales**



Sales and Service on Hydraulic Motors Pumps Hoses Accessories and Honda Engines