

**STEEL BUILDINGS - INEXPENSIVE**

"We Build All Year"  
ESTIMATES FREE

**SAVE!** Post Frame Steel Bldgs  
**SUMMER SALE**  
24 x30 PF Bldgs \$4,900  
Erected All Sizes Available  
Building Pkgs Available



**SCORLE**  
STEEL BUILDING COMPANIES, LTD.

Quality - Not Undersold  
717-564-6886


**URETHANE SOLUTIONS INC.**

- Sprayed in place polyurethane insulation
- R / 5 per inch
- Closed cell product = built-in vapor barrier
- Typical Applications include new construction, coolers and freezers, crawl spaces, attics, basements, barns, pole and metal buildings, cold storage
- 50% more efficient than a typical fiberglass installation
- Our company's focus is quality, integrity, and value. No job is too small or large. Please call for free estimates and technical advice 215/598-3026.

**BUILDINGS AND SUPPLIES**

**POST™**  
**protector** US Patent

**Eliminate Post Decay!**



**Continuous foundation performance for your post frame building**

lifetime post • uplift protection  
environmentally safe • patented design  
concrete backfill without decay!

**1-877-WON'T-ROT (966-8768)**  
[www.postprotector.com](http://www.postprotector.com)

*Quality Craftsmanship!*  
**Building Excellence Since 1989!**  
[www.conestoga-buildings.com](http://www.conestoga-buildings.com)

**Custom Horse Buildings**



Stall Barns-Hay Storage  
Riding Arenas-Run In Sheds

- Custom, CONESTOGA Building to Your Specifications
- Serving PA, DE, MD, NJ, VA, WV, and NY
- Company crews for quick service & quality construction
- Call for FREE estimate or to discuss your custom design
- Professional Sales and Marketing Team



C B Structures, Inc. producers of  
**CONESTOGA Buildings**



New Holland, Lancaster County, PA  
**1-800-544-9464**

**CONESTOGA CONCRETE WALLS**

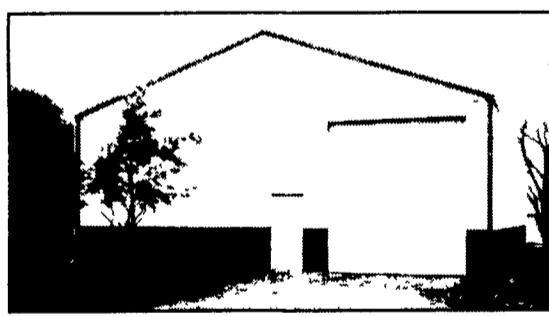
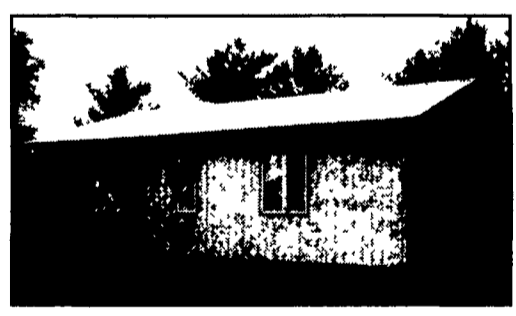
- NRCS Approved Manure Storage Pits
- Cast in Place Foundation & Retaining Walls
- Pre Cast Bunker & Retaining Walls



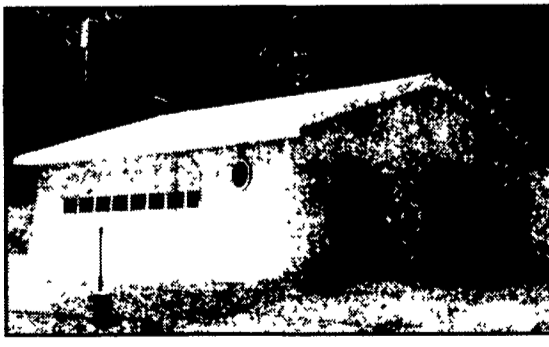

65 N. Harvest Rd.  
Bird-n-Hand, PA 17505

Contact Elam  
717-278-7150

- 30x50x12  
• 2-10'w x 10'h garage doors  
• 1-3' entry door  
**\$13,250**
- 40x60x12  
• 1-12'w x 12'h sliding door  
• 1-10'w x 10'h garage door  
• 1-3' entry door  
**\$16,500**
- 40x80x12  
• 1-12' x 12'h sliding door  
• 1-10'w x 10'h garage door  
• 1-3' entry door  
**\$21,400**
- 50x96x14  
• 1-14'w x 14'h sliding door  
• 1-12'w x 12'h garage door  
• 1-3' entry door  
**\$28,400**



*PPB, Inc.*  
*Can We Build One For You!*



- Stock Buildings**
- 24x24x8  
• 2-9'w x 7'h garage doors  
• 1-3' entry door  
**\$5,750**
  - 24x40x10  
• 2-9'w x 8'h garage doors  
• 1-3' entry door  
**\$8,400**
  - 30x32x10  
• 2-9'w x 8'h garage doors  
• 1-3' entry door  
**\$8,400**
  - 30x40x10  
• 2-9'w x 8'h garage doors  
• 1-3' entry door  
**\$9,250**
  - 30x64x10  
• 2-10'w x 10' sliding doors  
• 1-3' entry door  
**\$13,250**

• 40# per sq. ft. snow load on trusses  
• Financing Available  
• Call for free literature or see us at [www.pioneerpolebuildings.com](http://www.pioneerpolebuildings.com)

Prices included tax, delivery materials, and labor for construction.

**Pioneer Pole Buildings, Inc.**  
716 South Rt. 183, Schuylkill Haven, PA 17972  
Toll Free 1-888-448-2505 Fax 1-888-448-2515  
[www.pioneerpolebuildings.com](http://www.pioneerpolebuildings.com)

- 35 year warranty Everlast painted steel (your choice of color on roof, sides, trim).
- Steel is G 100 painted and heat roll formed by Everlast Inc., the best known roofing made.

