

1A CONSTRUCTION EQUIPMENT

Hotly hot pressure washer, commercial model 810. Ideal for cleaning equipment, \$1,850/obo. Eager Beaver blacktop roller, 1 1/2 ton, hydro, \$1,950/obo. 610-838-8570

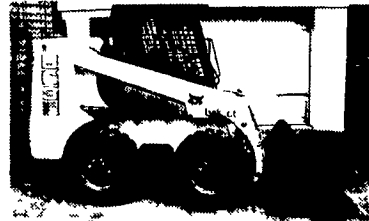
Case 580L Backhoe, 4x4, Ex-hoe, 1950 hrs, exc. NO Sunday Calls Please 2 6 7 - 7 6 7 - 6 2 6 5 . 3hp chugged air compressor, challenge air, 80 gal upright tank, \$400 obo. Ask for Ben, 610-223-4299. JD 544B wheel loader, enclosed cab glass, heater, VG cond, \$17,500. 410-937-1981.

Kubota steel tracks w/ guards for 121-2 or 3 ex excavator. Kubota HD 24' excavator bkt, \$650. IF Spiral-Flu, 175 CFM compressor, gas, \$1000. IF Gyro-Flu 85 CFM gas \$1000. 570-675-1437 NEW JD 110 backhoe \$36,500. Will consider trade in. 717-367-9773

Financing Available With Good Credit



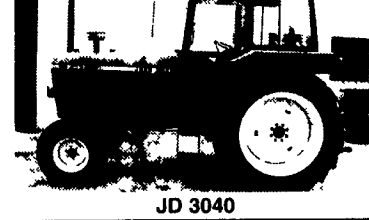
1990 JD 310D Tractor Loader Backhoe, Cab, 4x4, Ext. Hoe \$24,500



Bobcat 863, New Rubber, Nice \$13,500



JD 2130 w/Cab\$6,500



JD 3040



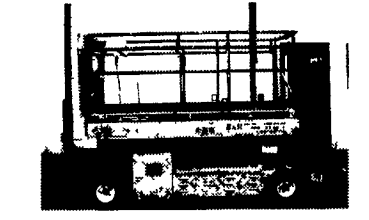
Lull 844 37 Ft. Reach New Heu Engine 3 Yrs. Ago, New Tires.\$21,500



Michigan 125B Wheel Loader, Good Rubber\$12,500



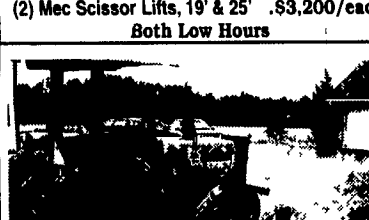
Ditch Witch.\$6,500



(2) Mec Scissor Lifts, 19' & 25'\$3,200/each Both Low Hours



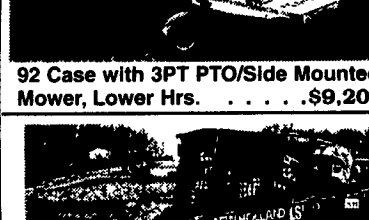
98 Gehl 5635 700 Hrs. w/Foot Controls\$12,500



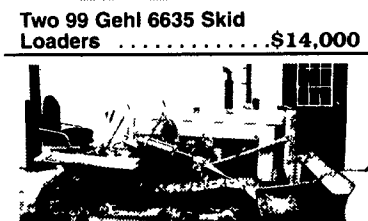
92 Case with 3PT PTO/Side Mounted Mower, Lower Hrs.\$9,200



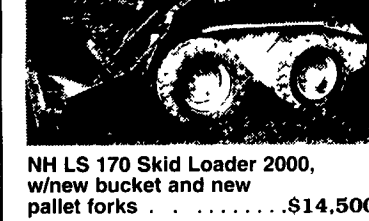
Two 99 Gehl 6635 Skid Loaders\$14,000



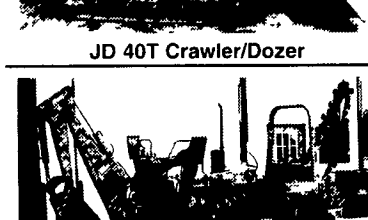
NH LS 170 Skid Loader 2000, w/new bucket and new pallet forks\$14,500



JD 40T Crawler/Dozer



JD 310C TLB



Ditch Witch 410

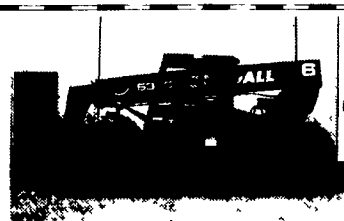
12.16.5 New 10 ply Skid Loader Tires, Heavy Side Wall \$95 each



JDA

AA
◆ **Equipment** ◆
◆ **717/529-2512** ◆
No Sunday Calls

1797 Robert Fulton Hwy. Quarryville, PA 17566
• We Buy & Sell • Financing Available



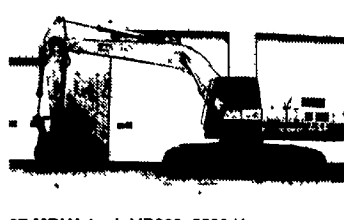
96 Gradall 534C, Canopy, 3370 Hrs, 80% Tires 6000 Lb Lift 36 Reach \$27,000



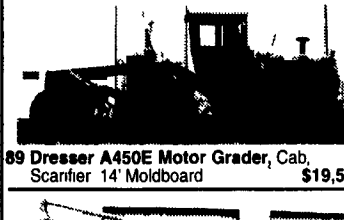
94 Hitachi Ex22, Canopy, 2030 Hrs, Rubber Tracks w/Blade \$12,500



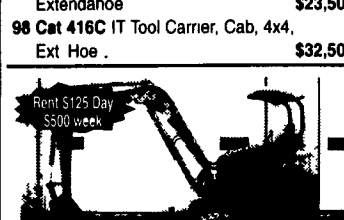
99 JCB 214 Series III, Cab 2720 Hrs 4x4 Extendahoe \$29,000



87 MDI Yutani, MD300, 5580 Hrs 32' Shoes, 10' Stack \$18,000
2000 Hitachi EX200-5, 2900 Hrs \$69,000



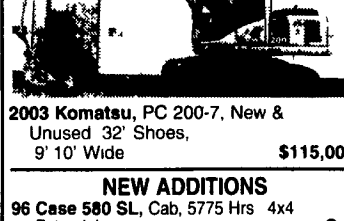
89 Dresser A450E Motor Grader, Cab, Scarifier 14' Moldboard \$19,500



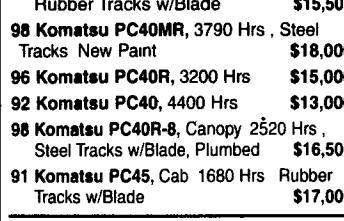
96 Ford 575D, Cab, 4450 Hrs 4x4, Extendahoe \$23,500
98 Cat 416C IT Tool Carrier, Cab, 4x4, Ext Hoe \$32,500



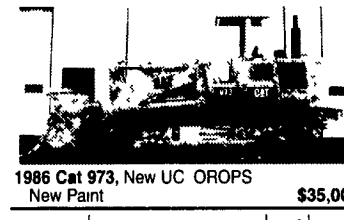
73 Fiat Allis 605B, 3340 Hrs 80% Tires \$11,500



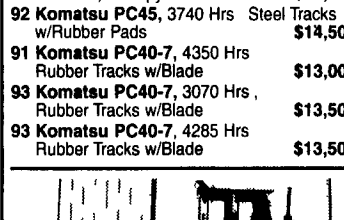
2003 Komatsu, PC 200-7, New & Unused 32' Shoes, 9' 10' Wide \$115,000



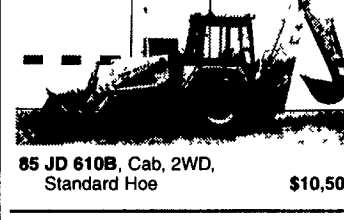
97 Komatsu PC40FR, Canopy, 3290 Hrs Rubber Tracks w/Blade \$15,500



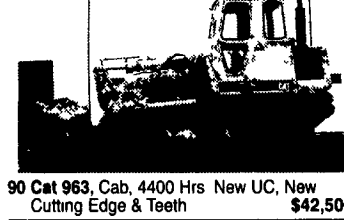
1986 Cat 973, New UC OROPS New Paint \$35,000



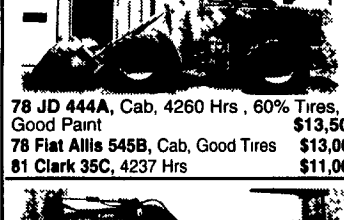
96 Case 580 SL, Cab, 5775 Hrs 4x4 Extendahoe Call



96 Liebherr LR 631C, Cab, 5370 Hrs 90% UC, GP Bucket \$36,000



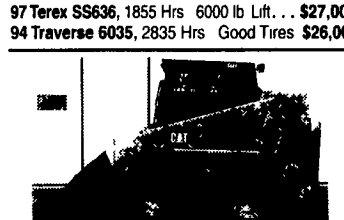
90 Cat 963, Cab, 4400 Hrs New UC, New Cutting Edge & Teeth \$42,500



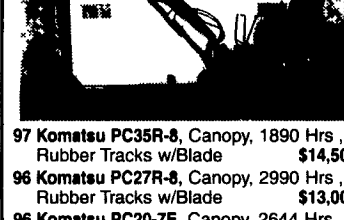
78 JD 444A, Cab, 4260 Hrs, 60% Tires, Good Paint \$13,500
78 Fiat Allis 545B, Cab, Good Tires \$13,000
81 Clark 35C, 4237 Hrs \$11,000



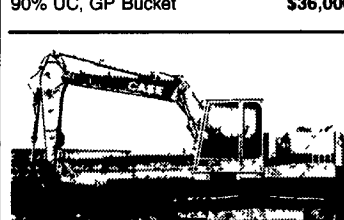
90 Case 888, 5350 Hrs, 24' Shoes, Leveling Kit, Mechanical Thumb\$19,500



97 Terex S5636, 1855 Hrs 6000 lb Lift. . . \$27,000
94 Traverse 6035, 2835 Hrs Good Tires \$26,000



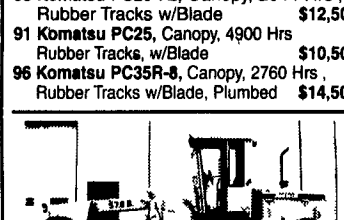
97 Komatsu PC35R-8, Canopy, 1890 Hrs, Rubber Tracks w/Blade \$14,500



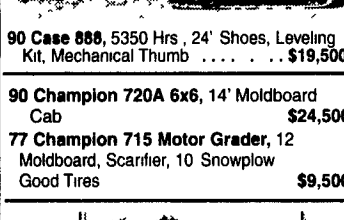
90 Case 888, 5350 Hrs, 24' Shoes, Leveling Kit, Mechanical Thumb\$19,500



2001 Cat 246, 930 Hrs, Cab w/Heat, New Tires, Bucket & Forks \$21,000



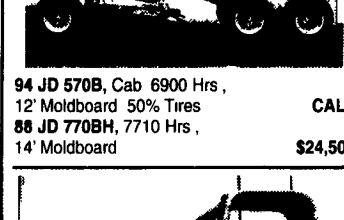
97 Komatsu PC27R-8, Canopy, 2990 Hrs, Rubber Tracks w/Blade \$13,000



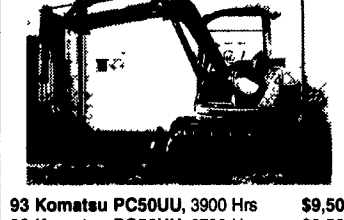
90 Case 888, 5350 Hrs, 24' Shoes, Leveling Kit, Mechanical Thumb\$19,500



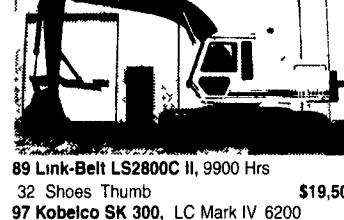
97 Ingersoll Rand VR60B, 2180 Hrs 40% Tires, 6000 lb Lift, 35 Reach \$27,000
96 JCB 506B, 1900 Hrs New Tires Rotating Forks \$27,000
JCB 525B Forklift, Bucket, Forks & Grapple 2200 Original Hrs Call



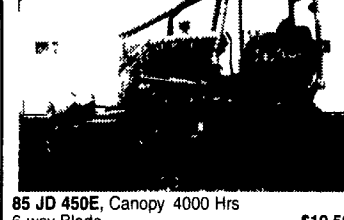
94 JD 570B, Cab 6900 Hrs, 12' Moldboard 50% Tires CALL
86 JD 770BH, 7710 Hrs, 14' Moldboard \$24,500



90 Case 888, 5350 Hrs, 24' Shoes, Leveling Kit, Mechanical Thumb\$19,500



89 Link-Belt LS2800C II, 9900 Hrs 32' Shoes Thumb \$19,500
97 Kobelco SK 300, LC Mark IV 6200 Hrs \$42,000
87 Hitachi EX200 \$21,000



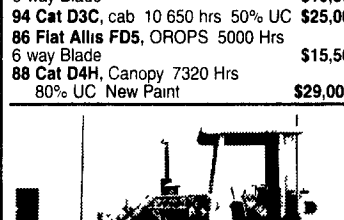
85 JD 450E, Canopy 4000 Hrs 6-way Blade \$19,500



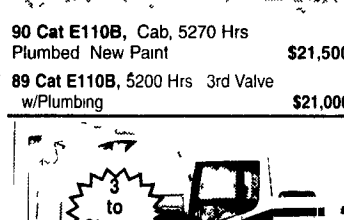
90 Cat E110B, Cab, 5270 Hrs Plumbed New Paint \$21,500



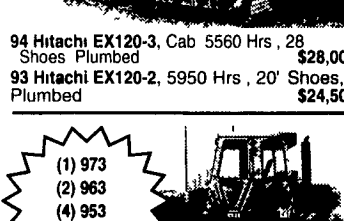
94 Hitachi EX120-3, Cab 5560 Hrs, 28 Shoes Plumbed \$28,000
93 Hitachi EX120-2, 5950 Hrs, 20' Shoes, Plumbed \$24,500



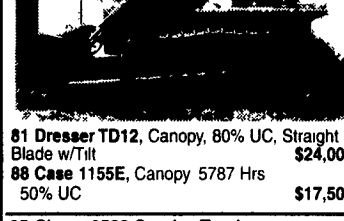
88 Cat D4H, Canopy 7320 Hrs 80% UC New Paint \$29,000



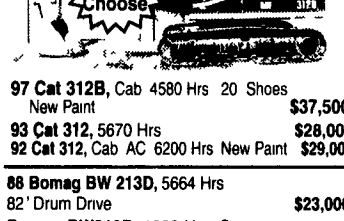
90 Cat E110B, 5200 Hrs 3rd Valve w/Plumbing \$21,000



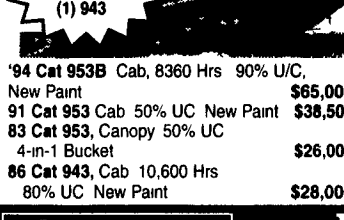
94 Hitachi EX120-3, Cab 5560 Hrs, 28 Shoes Plumbed \$28,000
93 Hitachi EX120-2, 5950 Hrs, 20' Shoes, Plumbed \$24,500



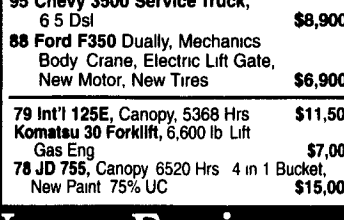
81 Dresser TD12, Canopy, 80% UC, Straight Blade w/Tilt \$24,000



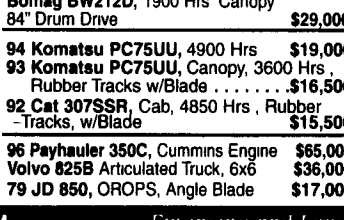
97 Cat 312B, Cab 4580 Hrs 20 Shoes New Paint \$37,500



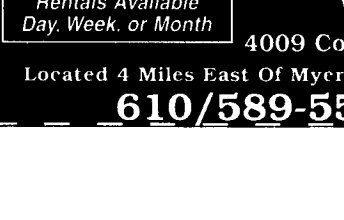
94 Cat 953B Cab, 8360 Hrs 90% U/C, New Paint \$65,000
91 Cat 953 Cab 50% UC New Paint \$38,500
83 Cat 953, Canopy 50% UC 4-in-1 Bucket \$26,000
86 Cat 943, Cab 10,600 Hrs 80% UC New Paint \$28,000



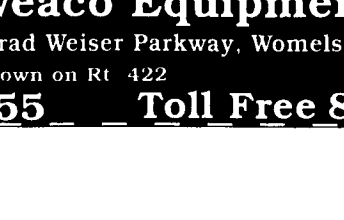
88 Ford F350 Dually, Mechanics Body Crane, Electric Lift Gate, New Motor, New Tires \$6,900



82 Bomag BW 213D, 5664 Hrs 82' Drum Drive \$23,000
Bomag BW212D, 1900 Hrs Canopy 84' Drum Drive \$29,000



79 Int'l 125E, Canopy, 5368 Hrs Komatsu 30 Forklift, 6,600 lb Lift Gas Eng \$7,000
78 JD 755, Canopy 6520 Hrs 4 in 1 Bucket, New Paint 75% UC \$15,000



96 Komatsu PC75UU, 4900 Hrs \$19,000
93 Komatsu PC75UU, Canopy, 3600 Hrs, Rubber Tracks w/Blade\$16,500
92 Cat 307SSR, Cab, 4850 Hrs, Rubber Tracks, w/Blade \$15,500
96 Komatsu 350C, Cummins Engine \$65,000
Volvo 825B Articulated Truck, 6x6 \$36,000
79 JD 850, OROPS, Angle Blade \$17,000



96 Komatsu 350C, Cummins Engine \$65,000
Volvo 825B Articulated Truck, 6x6 \$36,000
79 JD 850, OROPS, Angle Blade \$17,000

Rentals Available Day, Week, or Month **Weaco Equipment** 4009 Conrad Weiser Parkway, Womelsdorf, PA 19567
Located 4 Miles East Of Myerstown on Rt 422 sales@weacoequipment.com
610/589-5555 Toll Free 877/529-9328