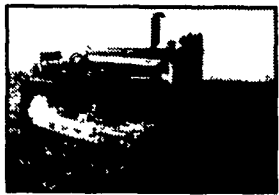


JD Crawlers



Parting out
MC, 40, 420,
430, 440,
1010, 2010
Gas and Diesel

We have parted out around 45 Crawlers, and 100 Tractors, Blades, Loaders, 3pt. Parts, Tracks, Sprockets, Rollers, Idlers, Trans., Track Frames, Grill Guards, Seat Frames, Fenders, PTO's, Covers, PTO, Belt Pulleys, Sheet Metal, Belly Pans, Used and New Steering Clutches NOS MC parts

Fresh In For Salvage

440 gas loader	40 C 3 Roller
720D with WFE	1010C Loader
M	440 dozer
420C loader	440 wheel tractor
420U	MT

New Steering Clutches

Note new prices

Fiber, \$20.00 Steel, \$24.00 Pressure Plate, \$95.00

Wanted: Crawlers & Tractors Dead or Alive

We also part out Wheel Tractors
A, B, H, L, G, M, MT, 40, 50, 60, 70, 420, 520,
620, 720, 530, 630, 730, 3010

Stone & Parrish

RR#6 Box 6245P Montrose, PA 18801
570/278-1910

Business Hours - Mon.-Fri 8AM-5PM
Sat. 8AM-12 PM

Visa and MasterCard Accepted



JD 4300, 4WD, w/ldr., Shuttle, 500 hrs., excellent. . . \$14,500

JD 2750, 2WD, 4100 hrs., Excellent. \$14,000

JD 1650, 2WD, w/ldr., 2600 Hrs, like new. \$13,500

JD 970, 4WD, w/ldr., 1500 Hrs., nice \$12,500

NH 2120 4 WD w/ldr., 700 hrs., like new \$15,000

Ford 4000 SU, w/ldr., gas, very good \$7,500

Ford 3000 gas, 8 spd., ps, nice \$5,500

Kubota M7500 low profile, orchard
fenders, 70 HP, 3700 hrs., clean \$6,500

Oliver 77 gas, w/Sears rotary mower
super nice \$3,500

Toro 345 w/72" deck, cab, gas, 1400 hrs. \$4,250

Farmall M restored excellent Call

Farmall 560 diesel, clean Call

MANY OTHER FARMALLS AVAILABLE

OTHERS AVAILABLE

CALL SCOTT BOND

325 County Rd. 579 Ringoes, N.J.

908-782-7658

Best Buys in Used Equipment

TRACTORS

- CIH MX240
- CIH MX220
- CIH MX150
- CIH MXM120
- CIH MXM190
- CIH MX110
- CIH 5130 MFD, Cab, Loader
- CIH 8930
- CIH 8940
- CIH 7110 2WD, 1,600 Hrs.
- CIH 5140, MFD
- CIH 895, cab
- Case 1690
- Case 2670 (Nice)
- Case IH 8920
- Case DC
- Case 430
- IH 574
- IH 784
- IH 966
- IH 986
- IH 1086 Duals
- JD 4250 MFD
- MF 1155
- Oliver 770

TILLAGE

- Glencoe 4450 7-shank chisel plow
- CIH 6500 9 Shank
- JD 210 Disc
- IH 370 12 ft. Disc
- Bush Hog 14 ft. Disc

HAY EQUIPMENT

- Gehl 2412 Disc Mower
- Hesston 1340 12 ft. Disc Mower
- NI 5212 12' Disc Mower, \$9,000
- Case IH 8312 Mower
- Kvermland Bale Wrapper
- 2001 Class 2200 Baler, Roto Cut, 4,000 Bales, \$56,000
- Hesston 4590 Baler Thrower Deluxe
- 2001 Hesston 4755 Baler, 1500 Bales, \$42,000
- Hesston 4760 Baler, Like New
- Hesston 540 Baler
- NI 486 Round Baler
- NI 4845 Baler
- CIH 8350 Mower
- 6 ft. 3 pt. Disc Mower
- Lely 2-Star Tedder

HARVESTING EQUIPMENT

- Gehl 980 Wagon (Like New)
- (2) Gehl 1660 Combo Wagons
- (2) Badger 950 Wagons
- Miller 5200 18ft.
- NI 2RN Picker
- Gleaner, R62 25' Flex, 6 RN
- NH 782 Harvester

SKID LOADERS

- Case 60XT - 1300 Hrs.
- Case 75XT - 700 Hrs.
- Case 90XT
- Case 95XT - 1200 Hrs.
- Case 1845
- Case 1845C
- Case 580L
- FFC Preperator
- Rubber Tire Scraper
- Big Arm Backhoe

MISCELLANEOUS

- IH 800 4RN Planter
- JD 8350 Drill
- NI 3732 Spreader
- 30 ft. Elevator
- Vandale TMR
- Farmmaster TMR Cart
- Weaverline 430 Cart
- WIC 45 Feed Cart
- Woods Bank Mower
- GVM 2000 Prowler SP Sprayer
- AW 375 Dynamometer (Rebuilt)
- JD Axle Duals 18.4x38
- 710-70 R42 Tires



Visit us on the internet at <http://www.caseih.com>
Case IH is registered trademark of Case Corporation

717-933-4114

CASE IH

NH Hay, Forage, Skid Steer Parts

Dismantling the following equipment:

- Balers**
S67, 315, 283, 66, 68, 268, 269, 270, 276, 281, 310, 311, 320, 273
- Thrower**
54, 70, 75
- Haybines**
469, 479, 488, 489, 499, 1495, 411 Discbine
- 463 Disc Mower
- Forage**
- Harvester**, 717, 718, 770, 880, 890, 892, 900, 1880, 1890, 1895 Field Queen
- STD-SP
- Skid Steers**
L35, L775, L555, L781, L785, 778

We Purchase NH Eq. For Salvage!!

AG Industrial Inc.
Rising Sun, MD
1-800-442-5043
Ask for Terry or Rick in Service

Maximize Your Yield Potential



When it comes to improving Relative Feed Value and maximizing the Crude Protein in hay, nothing outperforms the New Idea® 5209 Disc Mower Conditioner. Its high-speed disc cutterbar glides through fields with ease, even in extreme conditions. And the unique Ti-Cor® Conditioning Rolls gently condition the stems, speeding drydown.

The 5209's reliable design keeps you mowing and conditioning year after year. With the segmented cutterbar driveshaft, a New Idea innovation, the cutterbar is truly modular, which makes for easy maintenance.

To see the disc mower conditioner that'll exceed your expectations - not your budget, visit your AGCO® New Idea dealer today.



NEW IDEA

BUILT FOR THE BOTTOM LINE

See Your AGCO - New Idea Dealer Listed Below.

Maryland

Dayton
J.D. Mullinix

Pennsylvania

Airville
Farmers Equipment & Supply, Inc.

Bechtelsville
Miller Equipment

Bethel
Zimmerman's Farm Service

Glen Rock
Wertz Farm & Power Equip.

Greencastle
Meyers Implements

Honesdale
Marshall Machinery, Inc.

Klingerstown
Stanley's Farm Service

Lebanon
Umbergers of Fontana

Mercer
Ralph W. Kyle

Oakland Mills
Peoples Sales & Service

Quakertown
C. J. Wonsidler

HONDA GENERATORS & PUMPS



Keeping it going smoothly and quietly

JULY SPECIALS

Honda Engines Special

GX150	2.5 HP	\$249
GX160	5.0 HP	\$220
GX100	3.0 HP	\$279
GX120	4.0 HP	\$307
GX160	5.5 HP	\$328
GX200	6.5 HP	\$375
GX270	9.0 HP	\$529
GX340	11 HP	\$603
GX390	13 HP	\$628

Elec Start Engines

GX160	5.5 HP	\$441
GX270	9.0 HP	\$656
GX340	11.0 HP	\$715
GX390	13 HP	\$710
GX610	18 HP	\$1075
GX620	20 HP	\$1275
GX670	24 HP	\$1125

18 thru 24 HP Need muffler \$135

UPS Daily Shipping Rates

2.5 HP	to	6.5 HP	\$10
9.0 HP	to	13 HP	\$30
18 HP	to	20 HP	\$55

Blue Mt. Small Engine Service

1490 Three Sq. Hollow Rd.
Newburg, PA 17240
717-423-5358