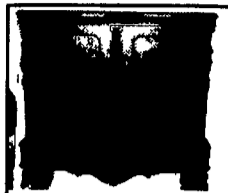


John M. Hess AUCTION SERVICE INC. **LIQUIDATING** **John M. Hess AUCTION SERVICE INC.**
FOUR HOUSEHOLDS
Friday, July 18, 2003 1:00 PM
Wolgemuth Auction Center
109 N. Maple Avenue, Leola, PA 17540



FURNITURE: Unusual carved server (figural) cloven feet. Early arts and crafts (mission influenced) table and chairs original cowhide feet (nice), bow front china closet (as is), Art Deco bedroom suite, Singer and treadle sewing machine, oak china closet, depression bedroom suite, dough tray drum table, cane back oak rocker, several plank bottom rockers, blanket chest, 3 cedar chests, 10 pc. Dining room set, jelly cupboard, grandfather clock, 4 pc. Maple bedroom suite, 2 wash stands one is oak. All kinds of dressers and chests of drawers, 2 mahogany servers, ornate oak dresser, oak washstand, spinning wheel, clothes tree, miscellaneous end tables and chairs, bookcases, game table, mahogany extension table, Empire living room suite, children's rockers, 3 refrigerators, numerous washer & dryers and many other items too numerous to mention.



COLLECTIBLES: Hand carved bone/ivory crucifix in original hand carved wooden box, German Nazi dagger & sheath (Nazi symbols, skull & cross bone chain), milk glass sugar shaker, 6+ several quilts (nice), early harmonica, large assortment of textiles including hankies and chenille bed spreads, early alarm clock, assortment of cast iron figures including small animals, large selection of lamps including early cast iron floor lamps, brass table lamps and other unusual lighting, agate coffee pot, 2 brass spittoons, early pictures, prints and mirrors, large assortment of early Christmas decorations, Sterling silver items, early china and glassware, Pink depression, Iris glass, flower vases, African American bobble head



bank, bear bank, occupied Japan figures, Halloween decorations, early dolls, Longaberger baskets, early scales, raised panel shutters and other primitives including tools, wash boilers, etc., several large jardinières, dress mannequins and other sewing related items **212JD Riding Mower**. This is an extremely large and varied sale. We are unpacking and receiving new items daily.

John Hess (AU-003484-L) Auctioneer
 Phone (717)733-8192 or (717)656-2947
 Dennis & Robert Wolgemuth
 Chris Miller &

TERMS: Cash or Good
 Check with ID
 Check our web page
 for more pictures:

Antique Detective

(Continued from Page B22)

known, one, a woman, Mary P. Carpenter was a prolific inventor in the 1870s. She created items to improve women's tasks. Among her patents were a straw-sewing machine (for sewing straw braid), an ironing and fluting machine, an improved mop ringer and a button and netting canopy for beds.

Models were built by inventors or by professional model makers, using drawings or specifications.

Not every model was manufactured or sold. Just because a patent was granted didn't mean it was successful. Many were actually impractical and didn't even work.

Fires in 1836 and 1877 destroyed thousands of the models.

Some of the patent model inventions have contemporary applications found in today's spas. One, "Improvement in Electric and Vapor chairs" patented in September 26, 1871 by Mary A. Hayward, was a precursor to our vaporizers. The purpose of the chair was to "apply to the human body, or portions thereof, vapors for opening the pores of the skin, and also to bring liquids into contact with the skin for medical purposes."

Rufus Porter (1792-1884) best known as a traveling folk artist was also a serious inventor. Among his inventions, a fire alarm, a revolving rifle, and an ice-making machine.

His Patent Model for a fire alarm, displayed in the Hagley Museum, has a colorful illustration of a house on fire and his signature. It is called "The Sensitive Fire Alarm" and is a forerunner to our home fire detectors.

Some are downright humorous. One, a cattle pump, would allow cattle to pump their own water by standing on a platform. By the use of cords and pulleys the weight of the animal would bear down on the plunger. Presto! Water!

CLUES: There are many models as yet undiscovered. It is possible to come across one at an estate sale or even a shop. Not everybody recognizes them or appreciates these examples of American ingenuity.

500+ LOTS COIN AUCTION 500+ LOTS
MON., JULY 21, 2003
AT 5 P.M.
AT: Springettsbury Fire Co. Social Hall
3013 E. Market St., York, PA
 Selling at absolute auction from a private collection the following:
Coins: Gold coins, Carson City unc. silver dollars, lots of Morgan & peace silver dollars in good asst. of dates, U.S. special mint sets also good asst. of dates, mint & proof sets, bags of silver coins & wheat cents, Indian cents, also nickels, dimes, quarters, half dollars, Ike & Anthony dollars, foreign coins & much much more. Call auction firm for list.
 Terms: Cash or approved check.
 Note: Doors open at 2 p.m. for inspection. Air conditioned hall.
Gilbert & Gilbert Auctioneers, Inc.
Brian L. Gilbert Lic. #2256
Jacob A. Gilbert Lic. #336
 Phone (717)252-1656 or (717)252-3591
www.Gilbertauctions.com

Lancaster Farming *Antiques Center*

Antiques Questions And Answers

My United Clock Co. electric clock is in the form of a fireplace. The logs rotate to give the effect of a burning fireplace. Does it have any value? It works.

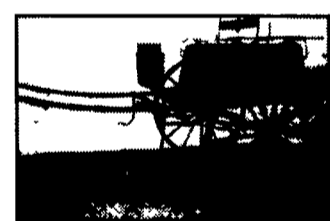
E.J.C. - Staten Island, NY
Novelty clocks such as yours, were made by many Companies in the 1920s, 30s. Similar clocks can sell from \$150/\$200 in shops.

This glass vase came from Italy in the 1940s. It has a hole in the bottom, possibly as a lamp base. Anything you can tell me?

R.M. - Staten Island, NY
Your Italian Art Glass lamp base could sell at a Modernism Show for over \$200.



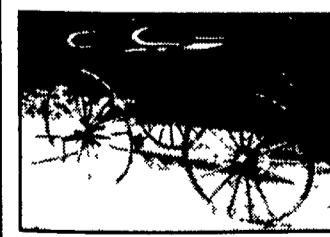
Hearse w/orig drapes, pole & single trees & pr of hearse lamps, 2002 Pace American enclosed trailer, custom built to transport hearse
 Selling Fri 's catalogued session



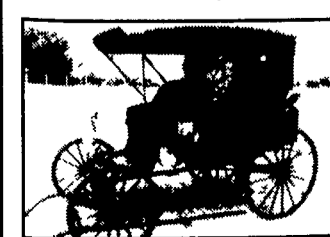
Horse Size Village Cart
 Kimball Bros., Boston



Restored White Chapel Cart
 By Brown Bros. & Co., NY
 Pole & shafts



Spring Wagon, Partially restored
 w/conversion pole



New Auto Top Surrey w/shafts

•• Please Note Important Changes
Receiving Times - Auction Times - Martin's Summer Auction
of Carriages, Coaches, Sleighs & Antiques
LEBANON FAIRGROUNDS,
Lebanon, Pennsylvania

TENTATIVE AUCTION SCHEDULE
FRIDAY, JULY 18 - 12:00 NOON - INSIDE AUCTION BUILDING OVER 100 Catalogued Carriages & Sleighs including restored, original and new conditions for miniature horses, ponies, horse & draft horse sizes. Pleasure driving, 2 & 4-wheel vehicles; combined driving carriages & sulkys; commercial & farm wagons; 2 & 4-Passenger sleighs and so on. We still have a few openings for good quality carriages & sleighs for Friday's carriage session. Contact our office immediately.

FRIDAY Approx. 3:00 PM - (IMMEDIATELY FOLLOWING CARRIAGES & SLEIGHS) CATALOGUED - Framed Pictures & Prints, Equine Books, Catalogues & periodicals & Appointments. Coaching and driving appointments from combined driving stable. (not catalogued)

SATURDAY JULY 19 - FIELD SESSIONS
9:00 AM - For both under the tent and the rows, we expect 200 horse drawn carriages, sleighs, farm wagons, running gears, 2-wheel carts and so on. All sizes & conditions (original, restored & new).

9:00 AM - Rows & rows of non-horse related items; Collectibles; Antiques; Lots of reproduction lawn & garden items; Primitive tools; Advertising memorabilia & much more.

9:30 AM - Tent session of driving, coaching, riding appointments; new & used tack; livery; harness parts; horse & pony blankets; miniature wagons; framed pictures & prints and other horse related items.

10:30 AM - SADDLE TENT - English, western, military & other saddles, new & used, horse & pony sizes.

Approx. 11:30 AM - IMMEDIATELY FOLLOWING CARRIAGES - Enclosed horse & carriage trailers; Flatbed & utility trailers; Trucks; Horses & ponies. Pair of registered Welsh ponies, mare, 14 y.o. & gelding, 16 y.o. chestnut, matched team, full brother & sister, broke to ride and drive.

APPROX. 11:45 AM - 12:00 NOON - HARNESS TENT - Pony, cob, horse, draft horse sizes; single, pair 4-in-hand & others.

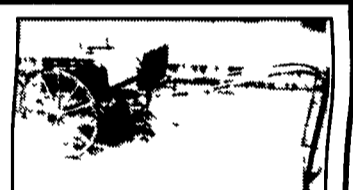
Approx. 12:00 Noon - Rows of horse drawn carriage & wagon parts; Horse related items and so on. PLEASE NOTE: Field items accepted until the start of the auction on Saturday morning (No prior deadline.) NO JUNK PLEASE!

RECEIVING TIMES (PLEASE NOTE CHANGES)
 (Items will not be received before Thursday, As Noted Below)
THURSDAY, July 17 - 12:00 NOON
FRIDAY, July 18 - 8:00 AM until start of the auction.
SATURDAY, July 19 - 8:00 AM until start of the auction.

Starting Thursday July 17,
Auction Site Telephone # 717-228-2828

TERMS & CONDITIONS CASH, TRAVELERS CHECKS, CERTIFIED CHECK, MONEY ORDERS, U.S. FUNDS ONLY.
 Personal or business checks accepted only with a current Bank Letter of Guaranteed payment, made payable to Martin Auctioneers, Inc. This currently dated letter must be presented at time of registering for a buyer's number. Sorry, No credit cards!
BUYERS PREMIUM
 • 6% on all items selling for \$1,000 & over (per item)
 • 10% on all Items selling under \$1,000 (Per Item).

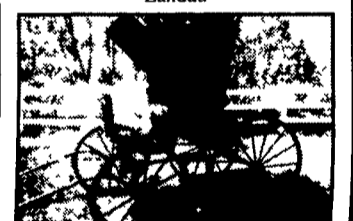
Martin Auctioneers, Inc.
 ♦ 12 North Railroad Avenue ♦
 ♦ P.O. Box 99 ♦ New Holland, PA 17557
 Phone (717) 354-6671 ♦ Fax (717) 354-8248
 PA-AY-00144L ♦ PA-AU0001863L ♦ NC Lic. #4626
 Auction Site Phone: 717-228-2828 Week of sale only!
 For more information regarding this auction or an auction of your own contact
Paul Z. Martin, Jr. or Shirley Morgan
 at (717) 354-6671
Absolutely No Private Sales
On Auction Grounds!



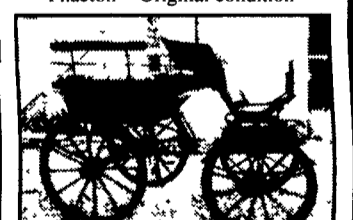
Pony Village Cart
 Fludder Bros., Newport, RI



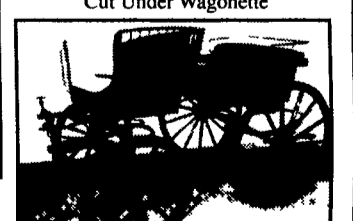
Landau



Phaeton ~ Original condition



Cut Under Wagonette



Spindle Seat T-Cart With pole



Pony Sleigh With Shafts