

A PREMIER TRACTOR & TRAILER AUCTION

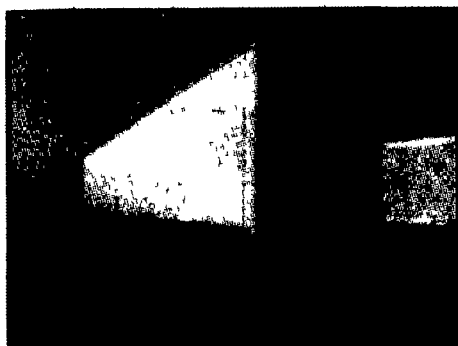
Absolute and Reserve Public Auction

Transport Auctions

Over 1000 Items Registered

Buy One or Buy Many

(details in listing below)



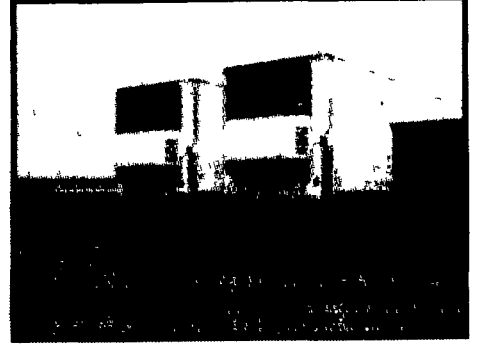
58 1996 53'x102" Trailmobile Dry Vans



50 1996 53'x102" Utility Reefers



30 2001 & 1999 Peterbilt Sleeper Semi Tractors



25 1998, 1999, 2000 48', 53'x102" Utility Reefers



1996 Freightliner Day Cab Semi Tractors



1996 Kenworth Sleeper Semi Tractor



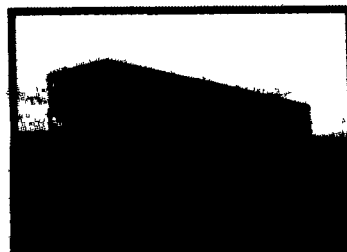
1990 Kenworth Sleeper & 94 Great Dane Reefer



1996 Talbert Flatbeds

Visit Us Online Anytime!
www.transport-auctions.com

Heavy Duty Pickup Trucks!



1995 Utility Trailliners



1999 Peterbilt Sleeper Semi Tractor



1997 Freightliner Sleeper Semi Tractor



1996 Peterbilt Sleeper Semi Tractor

TRUCKS

TA-1006-02 - 1998 Peterbilt 379 Sleeper Semi Tractor with Engine Brake
 Caterpillar 475 HP Engine, Air Suspension. **Features:** Power Steering, Dual Exhaust, Cab Bunk, Cab Stereo, Cab Air Ride Seat Driver

TA-1006-02 - 1994 GMC TC6H042 Straight Truck Chassis with 191785 Miles
 Caterpillar 3116 170 HP Engine, 5 Speed Transmission, Air Suspension, Color: White. **Features:** Power Steering.

TA-1007-02 - 1999 Freightliner FLD12064ST Sleeper Semi Tractor with 588000 Miles.
 Caterpillar C12 355/420 HP Engine with Engine Brake, RMX10-155A 10 Speed Transmission, Air Suspension, 40,000lbs Drive Axle with 3:90 Gear Ratio, Color Silver. **Features:** Power Steering, Dual Aluminum Fuel Tanks, Cab Bunk, Cab Air Ride Seat Driver, Front Wheels 22 5", Low Profile, Aluminum, Front Wheels: 22 5", Low Profile, Aluminum

TA-1009-02 - 1997 Freightliner FLD12042ST Sleeper Semi Tractor with 738000 Miles.
 Detroit 11 1 330 HP Engine with Engine Brake, 9 Speed Transmission, Air Suspension, Color White **Features:** Power Steering, Cab Bunk, Cab Air Ride Seat Driver

TA-1010-02 - 1999 Peterbilt 379-119 Sleeper Semi Tractor with 336000 Miles.
 Caterpillar 12 7L 430 HP Engine with Engine Brake, FRO15210 10 Speed Transmission, Air Suspension. **Features:** Power Steering, Dual Exhaust, Cab Bunk, Cab Air Ride Seat Driver, Aluminum Wheels

TA-1011-02 - 1998 Kenworth W900B Day Cab Semi Tractor with 450000 Miles.
 Cummins N14 370 HP Engine with Engine Brake, 10C, Air Suspension, 40,000lbs Drive Axle with 3:90 Gear Ratio Color: White. **Features:** Power Steering, Single Exhaust, Dual Aluminum Fuel Tanks, Cab Air Ride Seat Driver, Aluminum Wheels

1-866-653-2414

TA-1003-02 - 1998 Kenworth W900L Sleeper Semi Tractor with 498026 Miles.

Detroit 12.7L 500 HP Engine with Engine Brake, 18 Speed Transmission, Air Suspension, Color: Red. **Features:** Power Steering, Dual Exhaust, Dual Aluminum Fuel Tanks, Cab-Bunk, Cab Air Ride Seat Driver, Cab Air Ride Seat Passenger, Aluminum Wheels

TA-1012-02 - 1999 Isuzu NPR Straight Truck Van Body with 336,000 Miles.
 175 HP Engine Color: White.

TA-1001-02 - 1999 Kenworth W900L Sleeper Semi Tractor with 375,000 Miles.
 Cummins 460/525 HP Engine with Engine Brake, 14 Speed Transmission, Air Suspension. **Features:** Power Steering, Dual Exhaust, Dual Aluminum Fuel Tanks, Cab Bunk, Cab Air Ride Seat Driver, Front Wheels 22 5", Aluminum, Rear Wheels. 22 5", Aluminum

TA-1014-02 - 1999 Kenworth W900L Day Cab Semi Tractor with 328,481 Miles.
 Cummins N14-525 (11892720) 525 HP Engine with Engine Brake, RTLO18913A Transmission, Air Suspension, Color: Red. **Features:** Power Steering, Aluminum Fuel Tank, Cab Air Ride Seat Driver

TA-1015-02 - 1996 International Sleeper Semi Tractor

(3) TA-1016-02 - 1996 Freightliner FLD 120 ST Day Cab Semi Tractor.
 Detroit 12.7L 430 HP Engine with Engine Brake, Air Suspension, Color: Blue.

TRAILERS

TA-1000-02 - 1994 Great Dane 48/102 Reefer.
 48L X 102W X 13.6H with Air Spread Suspension. Color: White. **Features:** Carrier 9500 Reefer

TA-1020-02 - 1999 Utility 53/102 Dry Van-Aluminum.
 53L X 102W X 13 6H with Air Slider Tandem Suspension. Color White. **Features:** Inside Height: 110, Panels: Aluminum, Swing Rear Door, Hardwood Floor, Cross Member Condition: Good, Wheels: 22.5, Low Profile

(3) TA-9000-02 - 1995 Utility 48/102 Trailliner.
 48L X 102W X 13.6H with Spring Slider Suspension **Features:** Swing Rear Door, Hardwood Floor, Wheels: 22.5, Low Profile

(3) TA-9007-02 - 1996 Talbert 48/102 Flatbed.
 48L X 102W with Air Spread Suspension **Features:** Swing Rear Door, Tarp System

TA-9008-02 - 2000 Ravens 40/102 Dump.
 40L X 102W with Air Spread Suspension. **Features:** Aluminum Wheels

(25) TA-9011-02 - (5) 1998 48/102, (10) 1998 53/102, (5) 1999 53/102, (5) 2000 Utility 53/102 Reefer.
 48L, 53L X 102W with Air Slider Tandem Suspension Color White **Features:** Panels: Aluminum, Swing Rear Door, Aluminum Floor, Cross Member Condition: Good, Wheels 22 5 1998 Carrier Ultra Reefer Units (avg 12,000 hrs)

Everybody Saves With Remote Bidding!

Attend our auction for the opportunity to bid on these off-site items or bid on any of our items from the comfort of your home or office with our Online Ringman system.

(15) TA-1002-02 - 2001 Peterbilt 379 Sleeper Semi Tractor
 Caterpillar 475 HP Engine, Air Suspension, Ext Hood (FOB WESTERN PA)

(15) TA-1004-02 - 1999 Peterbilt 379 Sleeper Semi Tractor
 Caterpillar 475 HP Engine, Ext. Hood (FOB WESTERN PA)

(58) TA-1013-02 - 1996 Trailmobile 53/102 Dry Van - (35) Aluminum & (23) FRP. (FOB KANSAS)

(50) TA-1021-02 - 1996 Utility V92RX 53' Reefer.
 53L X 102W with Spring Slider Suspension. Color: White. **Features:** 1996 ThermoKing SSR screw Reefer (FOB UTAH)

representative items will be on-site!

This brochure is subject to additions or deletions. Announcements made the day of the auction will take precedence over any printed material.

www.transport-auctions.com

Transport Auctions

hosted by Utility/Keystone Trailer Sales

WE BUY
 ALL TYPES
 OF TRUCKS