

## Dairy Beef Quality Assurance Training Seminar July 15

MIDDLETOWN (Dauphin Co.) — A Dairy Beef Quality Assurance (DBQA) training seminar has been scheduled July 15 in Perry County.

Sharing educational information with dairy producers on the subject of beef quality assurance in Pennsylvania is the purpose behind this initiative to certify dairy producers as implementers of best management practices at the farm.

Dairy producer and vice chairman of the Pennsylvania Beef Council, Duane Hertzler of Loy-ville, is hosting this first in a series of state training programs.

The program will begin at 10 a.m. with a presentation by Dr. Larry Hutchinson of Penn State and Dave Swartz, Perry County dairy extension agent. Lunch will be provided by the BQA Commission and the Pennsylvania Beef Council. After lunch, further presentations and discussions will be about keeping the appropriate records, choosing the right injection site locations and giving injections, and proper drug handling techniques. A ne-

crossy presentation by a Fort Dodge veterinarian will show the damage done to muscle tissue when shots are given inappropriately.

This seminar is open to anyone raising cattle in Pennsylvania, particularly dairy producers. Upon completion of the days events, each producer attending will be certified under the Pennsylvania Beef Quality Assurance Program and will be presented a farm sign and entitlement to the specially designed Pennsylvania BQA blue ear tags associated with the program. The farm sign and signature ear tags symbolize that their program and their production practices meet the standards of the state's guidelines for animal care. As a certified producer, they will join the ranks of more than 900 other top Pennsylvania producers.

Contact the Pennsylvania Beef Council at (717) 939-7000 or the Perry County extension office at (717) 582-5150 for more details or directions to the Duane Hertzler farm.

## New Website Makes Exploring Bay Region Easy

ANNAPOLIS, Md. — With the beginning of summer, it's a great time to start planning a trip to explore the culture, history, and environment of the Chesapeake Bay region. To help visitors make the most of their trip, the Chesapeake Bay Gateways network recently launched its new, interactive Website, [www.baygateways.net](http://www.baygateways.net).

The website is an easy resource for planning long or short trips. Bay region residents and visitors can find information about their favorite Chesapeake Gateway or discover new ones.

The Chesapeake Bay Gateways Network is a partnership system of more than 120 parks, wildlife refuges, museums, historic communities, and trails in the Chesapeake Bay watershed. Gateways are places to experience, first-hand, Chesapeake life and culture.

Users can explore the Gateways Network in a number of different ways:

- Location — The Gateways Network spans Maryland, Virginia, Pennsylvania, West Virginia, New York, and the District of Columbia.

- Activity — Gateways sites offer a wide range of activities from auto touring and biking to swimming and kayaking.

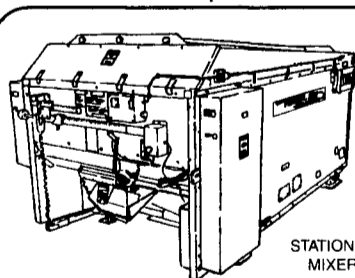
- Theme — Gateways focus on everything from "Watermen and the Bay" to "Environmental Stewardship."

- Type — Gateways take on many forms, from parks and museums to lighthouses, wildlife preserves, and water trails.

- Event — Chesapeake Bay Gateway sites host hundreds of exciting events throughout the year.

The website provides all the information travelers need to know before beginning a trip including upcoming events, driving directions, and activi-

ties, and fees. The site also offers a calendar of events, trip planner, interactive slide-shows of Network sites, a feature on Bay lighthouses, and more. A free map and guide to the Network can be ordered online or by calling (800) YOUR-BAY.



STATIONARY MIXERS



Some Models Cut and Mix Hay

Models from 55 to 490 cu. ft. mixing capacity ...

- PROVEN RUGGED
- PROVEN EFFICIENT
- PROVEN ECONOMICAL

Building T.M.R. Mixers Since 1981



800-436-5623  
717-484-0551

## Lancaster Poured Walls

- Agriculture
- Commercial • Residential

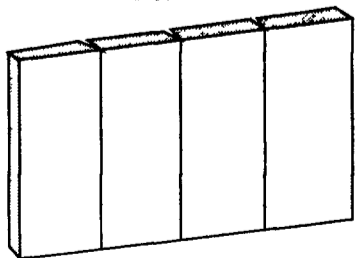
Call for Prices On:

- NRCS approved Manure Storage Pits
- Basements
- Footers
- Retaining Walls
- Foundation Walls
- Concrete Pumping

Customer Satisfaction Is Our Goal

**Lancaster Poured Walls, Inc.**

2542 Horseshoe Rd. • Lancaster, PA 17601  
(717) 656-7370 • Fax (717) 656-7350



## 2003 Pa. Holstein Championship Shows Set

STATE COLLEGE (Centre Co.) — The Pennsylvania Holstein Association has announced the schedule for its seven district championship shows this summer.

The show season will culminate Sept. 23 at the Pennsylvania Holstein Championship Show at the All-American in Harrisburg.

The district show schedule, with contact numbers, is as follows:

- Southwest Pa. Champion-

ship Show — July 26, Fayette County Fairgrounds, Uniontown, 10 a.m. (724) 677-2589.

- Northern Tier Pa. Championship Show — July 31, Wyoming County Fairgrounds, Me-shoppen, 10 a.m. (570) 679-2386.

- Northwest Pa. Championship Show — Aug. 1, Lawrence County Fairgrounds, New Castle, 9:30 a.m., (724) 654-7869.

- South Central Pa. Championship Show — Aug. 9, Ship-

ensburg Fairgrounds, Ship-ensburg, 9:30 a.m. (717) 258-3859.

- Central Pa. Championship Show Aug. 16, Huntingdon Fairgrounds, 6 p.m. (814) 667-3567.

- Northeast Pa. Championship Show — Aug. 19, Tioga County Fairgrounds, Whitney-ville, 10 a.m. (570) 724-7811.

- Southeast Pa. Championship Show — Aug. 20, Lebanon Fairgrounds, 9:30 a.m. (717) 949-2331.

## 'Plant' To Enter Harvest Basket Competition

KENNETT SQUARE (Chester Co.) — This spring's plentiful rains bode well for bountiful fruit and vegetable harvests in the coming months. Many gardeners are already planning for the eighth annual GardenFest Harvest Basket Competition, September 13 and 14, at Longwood Gardens

near Kennett Square. This competition encourages gardeners to combine their horticultural and artistic talents and create arranged baskets of homegrown produce.

The competition gives gardeners of all ages and expertise a chance to show their bounty and

vie for more than thousands worth of prizes. Entries will be accepted on Saturday, September 13, 7 a.m.-9 a.m. For competition guidelines, send a self-addressed stamped business envelope to: Harvest Basket Competition, Longwood Gardens, P.O. Box 501, Kennett Square, PA 19348-0501.

## Longwood Gardens Intern Plants 'Row For The Hungry'

KENNETT SQUARE (Chester Co.) — For 19 years, Longwood has participated in the national campaign sponsored by the Garden Writers Association of America to "Plant a Row for the Hungry." This program asks America's millions of gardeners to plant extra fruits or vegetables, harvest the produce, and give it to local charitable food distributors.

Throughout the growing season, Longwood gardeners pick, wash, and bag ripe produce. One week may yield 20 heads of cabbage and armfuls of lettuce; another week there may be 50 pounds of tomatoes and bushels of green peppers. Longwood donations include over 20 different types of crops ranging from beans, beets, and broccoli to

with Chester County Cares/Community Service Council of Chester County pick up the donations and distribute them to needy families. The Council's Gleaners Project coordinates efforts to gather fresh produce from area growers like Longwood and distribute it to the county's hungry.

Gardeners everywhere can help feed the hungry. The first step to joining the "Plant a Row" campaign is to plant an extra row (or more) in the garden or in a window box or container, depending on available space. Crops that travel and store well include broccoli, cabbage, carrots, peas, beans, tomatoes, peppers, squashes, onions, potatoes, and beets. Fruit trees and berry patches are another source for vi-

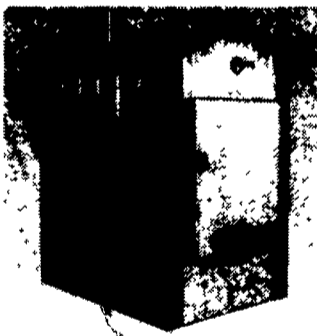
tamin-packed donations.

The next step is to locate a food bank, soup kitchen, or other charitable food provider that accepts fresh produce. Churches and the "Guide to Human Services" pages in the phone book are good places to start. It's important to find out if, when, and where they accept donations, and what types of produce they like. Some organizations can't handle fresh produce because they lack proper storage, but many are especially grateful for homegrown fruits and vegetables because of the rich nutritional content.

For suggestions, call Community Service Council/Chester County Care (610) 696-4545, contact Delaware (302) 761-9100, or Philabundance (215) 339-0900.

## HEATMOR OUTDOOR WOOD FURNACES

5 Sizes - 19 Colors - Wood or Coal Grates  
Forced Draft - Ash Auger Clean Out



Stainless Steel

COMPARISON WITH OTHER OUTDOOR UNITS

- Burns up to 1/2 less wood
- Emits up to 1/2 less smoke
- Corrosion Warranty up to 10 times longer

New!

Wood-Oil & Corn-Burning Options

Outback Heating Inc.

888-763-8617 800-743-5883  
Jamestown, NY Staunton, VA

## ALL NEW FOR 2003

Reel Mowers For a Quality Cut!

All our mowers pivot in the middle. Mow right around small trees - no dragging mowers and no skippers!



Model F-358  
3-Gang Trailing Mower  
(Shown with cart)

- 58" cut heavy duty transport mower
- Mows close to the edge
- Pull with horse, pony, or 10hp tractor

Also available in trailing mowers with 48" medium duty mowers, and 58" and 92" - 130" heavy duty mowers with transport frames. New Style!

The "Tri - Wheel" Deluxe Mower

- Three 21" heavy duty mowers for a 58" cut
- Auto-turn steering
- All new with lever lift
- 3 Large steering wheels (excellent for hillsides)
- Easy lift transport mower
- Built compact & rugged
- Pull with horse, pony, or 10hp tractor
- Available with rubber or steel wheels

Also 42" & 63" trail, lawn & brush cutters!!

Send For Our Brochure

Mascot Sharpening & Sales

434 Newport Road • Ronks, PA 17572