

**Dairy Products
Prices Highlights**
Washington, D. C.
July 3, 2003

Report Supplied By NASS/USDA
DAIRY PRODUCTS PRICES HIGHLIGHTS:

CHEDDAR CHEESE prices received for US 40 pound Blocks averaged \$1.16 per pound for the week ending June 28. The price per pound increased 2.6 cents from the previous week. The price for US 500 pound Barrels adjusted to 38 percent moisture averaged \$1.14 per pound, up 1.1 cents from the previous week.

BUTTER prices received for 25 kilogram and 68 pound boxes meeting USDA Grade AA standards averaged \$1.08 per pound for the week ending June 28. The U.S. price per pound decreased 0.6 cents from the previous week.

NONFAT DRY MILK prices received for bag, tote and tanker sales meeting USDA Extra Grade or USPH Grade A

standards averaged 80.6 cents per pound for the week ending June 28. The U.S. price per pound increased 0.2 cents from the previous week.

DRY WHEY prices received for bag, tote and tanker sales meeting USDA Extra Grade standards averaged 14.2 cents per pound for the week ending June 28. The U.S. price per pound increased 0.3 cents from the previous week.

**Belleville
Livestock Auction**

Belleville, Pa.
July 9, 2003

Report Supplied By Auction
CATTLE 216...(SUPPLIED BY THE AUCTION).

HEIFERS: Select 1-3 55.00-59.00.
COWS: Breakers 75-80% lean 49.00-52.00, Boners 80-85% lean 45.50-50.25, Lean 85-90% lean 37.00-45.00. Shells 20.00 and down.

BULLS: Yield Grade 1 1500-2100 lbs 54.00-59.75.

FEEDER CATTLE: STEERS: 66.00-79.00; **HEIFERS:** 48.00-55.00.

CALVES 134...VEALERS: Standard and Good 85-110 lbs 33.00-38.00, Utility 65-80 lbs 20.00-30.00. **FARM CALVES:** No 1 Holstein bulls 95-120 lbs 75.00-135.00, No 2 85-100 lbs 35.00-80.00; No 1 Holstein Heifers 85-100 lbs 235.00-350.00.

HOGS 0...NO MARKET TEST!
FEEDER PIGS 29...1-3 35-65 lbs 28.00-39.00 per head.

SHEEP 30...SLAUGHTER LAMBS: Choice 60-80 lbs 88.00-110.00. **SLAUGHTER SHEEP:** 30.00-38.00.

GOATS 25...(All goats sold by the head with weights estimated). Kids: Large 20.00-33.00. **Nannies: Large** 55.00-67.00, **Medium** 40.00-53.00. **Billies: Medium** 48.00-57.00.

Belknap Livestock

Belknap, Pa.
Report Supplied By USDA
July 9, 2003

CATTLE 122...(PDA).
STEERS: few High Choice and Prime 2-3 1275-1400 lbs 80.75-82.25, Choice 1-3 1000-1230 lbs 74.75-79.50, few Select 1-2 72.00-73.50, one Standard 1-2 63.00.

HOLSTEIN STEERS: few Choice 1-3 1000-1110 lbs 58.00-65.00, one Select 1-2 56.00, one Standard 1-2 52.00.

HEIFERS: Choice 1-3 1000-1160 lbs 73.50-79.50.

COWS: Breakers 75-80% lean 45.25-50.75, one 56.00, **Boners** 80-85% lean 41.50-46.75, **Lean** 85-90% lean 38.00-41.25. Shells 36.75 and down.

BULLS: few Yield Grade 1 1596-1988 lbs 61.50-66.75, few Yield Grade 2 1384-1660 lbs 47.00-54.25.

FEEDER CATTLE: HEIFERS: few Medium 1-2 476-672 lbs 56.00-68.00; **BULLS:** few Medium 1 376-496 lbs 81.00-87.00; few Medium 2 608-776 lbs 59.50-68.50.

CALVES 128...VEALERS: Good 170-295 lbs 68.00-81.00, Standard and Good 70-110 lbs 24.00-40.00, Utility 60-90 lbs 27.00-35.00. **FARM CALVES:** No 1 Holstein bulls 95-130 lbs 110.00-130.00, No 2 80-130 lbs 45.00-95.00; few No 1 Holstein heifers 80-95 lbs 350.00-400.00, few No 2 75-95 lbs 160.00-285.00.

Couple beef cross bulls and heifers 88 & 102 lbs 92.50 & 140.00, 220-290 lbs 53.00-69.00.

HOGS 69...BARROWS AND GILTS: 45-50% lean 200-270 lbs 43.00-47.50, 40-45% lean 220-290 lbs 38.25-42.75.

SOWS: few 1-3 478-572 lbs 28.00-31.00, one Medium 278 lbs 21.00.

BOARS: one 534 lbs 7.00.
FEEDER PIGS 76...1-3 40-60 lbs 21.00-28.00, few 70 lbs 41.00, 2-3 35-55 lbs 12.00-18.00 per cwt.

SHEEP 5...SLAUGHTER LAMBS: Choice 65-100 lbs 82.50-96.00.

GOATS 48...(All goats sold by the head with weights estimated). Kids: Selection 2 few 20 lbs and under 20.00-24.00, 20-40 lbs 20.00-39.00, 40-60 lbs 32.00-39.00. **Nannies:** few 90-100 lbs 48.00-61.00. **Wethers:** 80-100 lbs 38.00-44.00. **Billies:** few 85-100 lbs 55.00-63.00.

35-65% Choice 74.00-75.50, weighted average price 75.18. **DRESSED BASIS:** Over 80% Choice 119.00-120.00, weighted average price 119.46; 65-80% Choice 119.00-120.00, weighted average price 119.76; 35-65% Choice 119.00-121.00, weighted average price 119.80.

At So. St. Paul, slaughter steers and heifers sold steady. **South St. Paul: Steers:** Choice 2-4 1194-1375 lbs 73.00-75.00; pkg 1331 lbs 75.50. **Select and Choice** 2-3 1159-1280 lbs 71.00-72.75. **Heifers:** Choice 2-3 1170-1271 lbs 74.75-75.00. **Select and Choice** 2-3 1150-1153 lbs 71.25-72.00.

Sioux Falls terminal slaughter steers and heifers 1.00 higher. **Steers:** Choice 2-3 1268-1403 lbs 74.30-75.80, load high dressing 1344 lbs 76.20. **High Select and Choice** 2-3 1154-1357 lbs 73.60-74.90. **Select and Choice** 2-3 1200-1300 73.50-74.00. **Heifers:** Choice 2-3 1162-1258 lbs 74.10-74.70. **High Select and Choice** 2-3 1110-1239 73.00-74.10.

Estimated daily cattle slaughter under federal inspection for Wednesday was estimated at 136,000 head compared to 135,000 a week ago and 132,000 a year ago. Week to date totals through Wednesday 400,000 head compared to 402,000 last week and 390,000 a year ago.

CME Futures Closes for Live Cattle: July 72.55, down 1.40; August 71.07, down 1.17; September 71.70; down .75.

Slaughter cows at South St. Paul sold steady to 1.00 higher. **Premium White** 70-75 percent lean over 1200 lbs 52.00-55.00, **high dressing** 55.00-55.50. **Breakers** 70-80 percent lean over 1100 lbs 49.00-52.50, **high dressing** 52.50-53.00. **Boners** 80-85 percent lean over 1050 lbs 46.00-49.00. **Lean** 85-90 percent lean over 850 lbs 42.00-46.00.

Barrows and gilts were 1.00 lower at So. St. Paul. 220-270 lb 49-51% lean barrow and gilts closing at 41.00-42.00. At Sioux Falls the same classes sold 2.00-3.00 lower at 42.00. Direct trade prices are based on 185 lbs hog carcass with 0.9-1.1 inch back fat and 6 inch square loin/2.0 inch depth plant delivered. National direct trade closed 1.25 lower ranging from 52.50-64.00, weighted average 60.24. Iowa-So. Minnesota direct trade trended 1.00 lower ranging from 52.50-64.00, weighted average 60.72. The Western Cornbelt closed 1.25-1.50 lower with prices ranging 52.50-64.00, weighted average 60.57. The Eastern Cornbelt prices were 1.00 lower with prices ranging 52.50-62.77, weighted average 59.79.

Hog slaughter under federal inspection estimate on Wednesday was estimated at 366,000 head compared to 369,000 a week ago and 362,000 a year ago. Week to date totals through Wednesday 1,066,000 head compared to 1,116,000 head a week ago and 1,052,000 head a year ago.

CME Future Closes for Lean Hogs: July 63.80, down 1.15; August 65.12, down .72; October 58.37, down 30.

Slaughter lambs sold steady at So. St. Paul, MN. **Slaughter Lambs: New Crop:** Spring: 120-140 lbs 86.00-88.00; 110-120 lbs 84.00-86.00.

Sheep and lamb slaughter under federal inspection estimate on Wednesday was estimated at 10,000 head compared to 11,000 a week ago and 12,000 a year ago. Week to date slaughter for sheep through Wednesday 28,000 head compared to 33,000 head a week ago and actual slaughter same period a year ago was 33,000 head.

**REAR DISCHARGE
FINISHING MOWER**

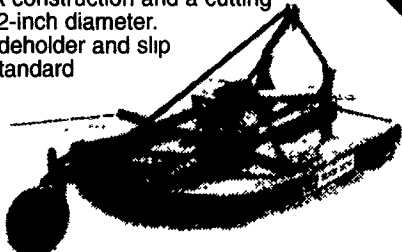
The RDTH Series Mowers are available in a choice of 60 or 72-inch cutting widths. Cutting heights adjustable from 1-1/2" to 6-1/2", in 1/2" increments. Blades overlap 1-1/2" for a cleaner cut.



BUSH HOG

**YOUR BEST
CHOICE FOR
ALL
MEDIUM DUTY
CUTTING JOBS.**

Bush Hog's 280 Series Rotary Cutters are proven winners for cutting pastures, and all general purpose cutting jobs. These rugged mowers feature a one-piece formed deck construction and a cutting capacity of 2-inch diameter. A round bladeholder and slip clutch are standard equipment.

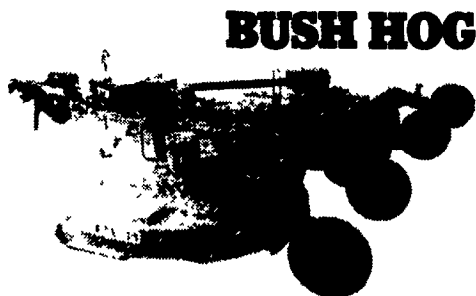


BUSH HOG

**Seven Reasons the 3715 Flexwing
is an Excellent Choice for Heavy Duty
Cutting Jobs.**

- Each axle pivot point has a greasable bushing for long life
- Dual wheels on center section are standard. Optional dual wheels on wings assist in mowing close to ditches
- Wide wing skids reduce "dig-in" on sharp turns
- Optional constant velocity PTO driveline.

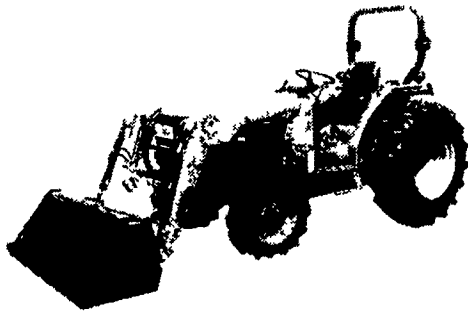
There's plenty more features; like a 5-year limited gear-box warranty, a full 15-foot cutting width, 7 gauge steel deck construction, and more. The 3715 flexwing cutter is rated for minimum 80 PTO horsepower tractors.



BUSH HOG

**Designed for Ease of Operation,
High Performance and Versatility.**

Bush Hog's Mid-Mount Loader features a maximum lift height up to 153 inches and a maximum lift capacity up to 4950 lbs. Regular or heavy duty buckets are available in 60, 72 and 84-inch widths. The mid-mount design means easy attaching and detaching, and the standard quick attach system gives you a fast, easy method of changing any attachment.



BUSH HOG

Building the Legend.

SEE YOUR LOCAL BUSH HOG DEALER

ABC GROFF

New Holland, PA 717-354-4191

CANNS-BILCO DIST.

Alburtis, Pa 610-966-3733

**CHAMBERSBURG
FARM SERVICE**

Chambersburg, Pa 717-264-3533

CHARLES S. SNYDER, INC.

Tamaqua, PA 570-386-5945

ERB & HENRY EQUIP., INC.

New Berlinville, PA 610-367-2169

**FARMERS EQUIPMENT &
SUPPLY, INC.**

Airville, PA 717-862-3967

FIELD'S IMPLEMENT STORE

Eighty Four, PA 724-222-1154

LEBANON VALLEY IMPLEMENT

Richland, PA 717-868-7518

NESSER FARM

Abbottstown, PA 717-868-6617

LESLIE G. THOMAS, INC.

Bridgeton, NJ 856-451-2727

MILLER EQUIPMENT CO.

Bechtelsville, PA 610-845-2911

**NORTH-EAST DISTRIBUTORS
& EQUIP.**

West Clifford, PA 570-222-9020

PEACH COUNTRY FORD TRACTOR

Richwood, NJ 856-589-3953

RODIO TRACTOR SALES

Hammonton, NJ 609-561-0141

ROVENDALE AG & BARN EQ

Watsonstown, PA 570-538-9564

SALTZGIVER TRACTOR REPAIR

Hanover, PA 717-632-9119

SCHEFFEL EQUIPMENT CO.

Somerset, PA 814-445-6500

STANLEY'S FARM SERVICE

Klingerstown, PA 570-648-2088

STOLTZFUS FARM SERVICE

Cochranville, PA 610-593-2407

TAYLOR EQUIPMENT CO.

Westminster, MD 410-848-1474

Taneytown, MD 410-751-1600

UMBERGER'S OF FONTANA

Lebanon, PA 717-867-5161



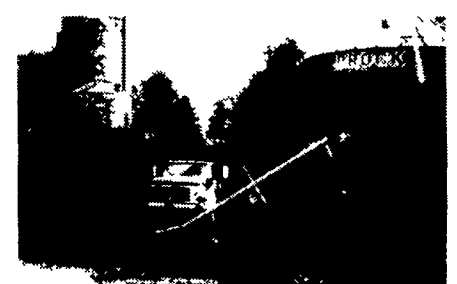
Don't stall

Call Paul

We roast it all.....

(Barley, corn, milo, soybeans, wheat)

No job too small!



SCHNUPP'S GRAIN ROASTING, INC.

416 Union Rd., Lebanon, PA 17046

(717) 865-6611 800-452-4004

David N. Groff
262 Pawling Rd., Lewisburg, PA 17837 (570) 568-1420