

# www.kbford.com Your Internet Connection

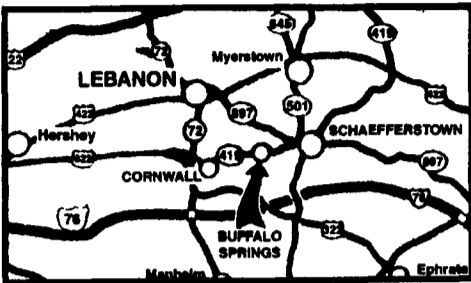
**SPECIALIZING IN NEW & USED SUPER DUTY PICKUPS**

## KELLER BROS.

(Buffalo Springs) Lebanon, PA

**717-949-2000 or 1-800-363-2767**

**LEBANON COUNTY'S HEAVY DUTY TRUCK HQTRS.**



**FAMILY OWNED AND OPERATED FOR OVER 80 YEARS**

Over 100 Clean Pre-Owned Vehicles In Stock At All Times!!

**2000 FORD F650 BOX TRUCK**  
Cat Diesel, AT, 24 Ft. Box, Hyd. Lift, 26,000 GVW, Air Brakes, Only 9,000 Miles  
**REDUCED \$31,921**



**2003 FORD F350 CREW CAB**  
V10, AT, Full Power, 4x4 Cab & Chassis Only.  
**"SAVE THOUSANDS"**



**1987 FORD E150 CLUBWAGON**  
7 Pass., 8 Cyl., AT, A/C  
**\$4,595**



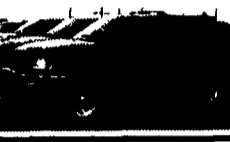
**2001 FORD F250 CREW CAB 4x4**  
7.3 Diesel, XLT, AT, A/C, PW, PL  
**\$31,995**



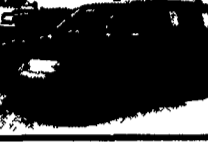
**2001 FORD F350 XL DUMP TRUCK**  
5.4 V8, 5-Spd., AM/FM/Stereo Only 7,000 Miles Ready to Work  
**\$25,900**



**1998 FORD EXPEDITION 4x4 EDDIE BAUER**  
V8, A/C, Full Power  
**\$15,795**



**2001 FORD ESCAPE**  
XLS, 4x4, 5-Spd., A/C, PW, PL, CD  
Only **\$14,595**



**2001 FORD RANGER SUPER CAB EDGE**  
V6, AT, A/C, 4x4, CD Player, 33,000 Miles, Very Clean  
**\$14,929**



**2001 FORD F150 SUPERCAB XLT**  
4x4, Off Road Pkg., 5.4 V8, AT, A/C, PW, PL  
**\$23,335**



**2000 MITSUBISHI MONTERO SPORT**  
V6, AT, A/C, PW, PL, Leather, CD, 1-Owner, Like New  
**\$16,975**



**2000 FORD F250 SUPERCAB, 4x4, XLT**  
7.3 Diesel, 6-Spd., A/C  
**\$20,550**



**2003 FORD E550 CUT AWAY CHASSIS**  
7.3L Power Stroke Diesel, AT, A/C, PW, P. Seats, Chrome Wheels, MSRP \$37,165  
**NOW \$29,665**  
Save \$7,500



**1997 FORD F150 SUPERCAB 4x4 LARIAT FLARESIDE**  
5.4 V8, AT, A/C, PW, PL  
**\$16,595**



**2001 FORD SPORT TRAC 4x4**  
4.0L AT, A/C, PW, PL, Alloy Wheels, Sharp  
Only **\$20,773**



**1995 DODGE RAM 1500**  
Reg. Cab. 4x4, SLT, V8, AT, PW, PL  
**\$8,808**



**2001 FORD F150 SUPER CAB LARIAT**  
4x4, 5.4 V8, AT, A/C, PW, PL, Leather, 21,000 Miles, Fiberglass Cap  
Only **\$25,773**



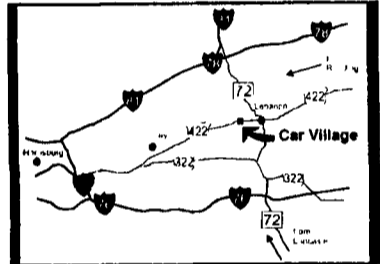
Nicest Trucks In the East • Nicest Trucks In the East • Nicest Trucks In the East • Nicest Trucks In the East • Nicest Trucks In the East • Nicest Trucks In the East

[www.useddieseltruck.com](http://www.useddieseltruck.com)

**2300 W. CUMBERLAND ST. (Rt. 422)**  
**LEBANON, PA 17042**  
(Across From Lebanon Valley Mall)

# CAR VILLAGE

**1-800-650-1420**  
**717-274-2000**



**6 SPD. POWERSTROKE**  
2001 FORD F250 SUPERCAB 4x4  
Very Nice Shortbed, 28,000 Miles, Loaded XLT, Fact. Tow Pkg., Alloy Wheels & Plenty More



**PRETTY AS A PICTURE**  
2001 DODGE 2500 QUAD CAB 4x4  
Gorgeous Truck, Only 37,000 Miles, 24 Valve Cummins Diesel, Auto, A/C, Camper Pkg., Rear Suny Bar, Limited Slip Axle



**\$12,900**  
99 CHEVY 2500 SUPERCAB 4x4  
6.0 Litre V8, Auto., A/C, All Power Equip., 8 Foot Bed, Alloy Wheels



**ONLY 18,000 MILES**  
2001 FORD F250 SUPERCAB 4x4  
Almost New, Loaded XLT, 5.4 Triton V8, Auto, A/C, Loaded XLT, Comfortable 40/20/40 Seat, Limited Slip Axle, Remainder New Warranty



**4x4 SUPER CAB SHORTBED**  
99 FORD F250  
Powerstroke Turbo Diesel, 6 Sp., A/C, Vinyl Seat & Floor \$22,900



**F350 CREWCAB**  
99 FORD F350 XLT  
Powerstroke Turbo Diesel, Auto, A/C, Tow Pkg., Loaded XLT, 62,000 Miles



**CUMMINS DIESEL**  
98 DODGE 2500 QUAD CAB 4x4  
24 Valve Cummins Turbo Diesel, Auto, A/C, Laramie SLT Pkg., 46,000 Miles



**5SP CUMMINS**  
2001 DODGE 2500 QUAD CAB 4x4  
Very Nice, Only 30,000 Miles, Remainder New TK Warranty, 24 Valve Cummins, Loaded Laramie SLT, Alloy Wheels, Tow Pkg.



**2000 FORD 350 SUPER CAB 4x4**  
Power Stroke Turbo Diesel, Auto, A/C, Tow Pkg., Very Clean, Sharp  
**\$27,900**



**2000 DODGE 2500 QUAD CAB 4x4**  
Local 1 Owner Trade, 360 V8, Auto., A/C, Loaded, Laramie SLT, Asking \$18,900



**GORGEOUS**  
99 FORD F350 SUPER CAB DUALY 4x4  
A Must See, Only 29,000 Miles, Powerstroke Turbo Diesel, Auto, A/C, Tow Pkg., Heavy 11,200 GVW, Alloy Wheels



**6 SP. CUMMINS**  
2001 DODGE 3500 QUAD CAB DUALY 4x4  
Very Strong Truck, Loaded, Laramie SLT, A/C, Overhead compass, loaded with Options, Tow Pkg



**\$23,900**  
99 FORD F250 SUPER CAB 4x4  
Short Bed, Nice to Drive, Loaded XLT, Powerstroke Turbo Diesel, Auto, A/C, Tow Pkg., Alloy Wheels, New Service & Insp.



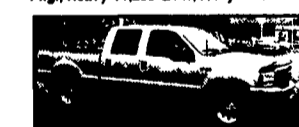
**1 TON PICKUP**  
99 FORD F350 4x4  
Hard Find Powerstroke Turbo Diesel, Auto, A/C, Capt. Chairs, Console, Limited Slip Axle, Alloy Wheels, Tow Pkg



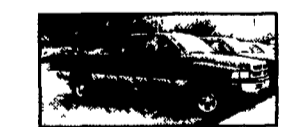
**4x4 CREW CAB DUALY**  
2002 FORD F350  
Loaded XLT, PowerStroke Turbo Diesel, Auto, A/C, Comfortable 40/20/40 Seat, Alloy Wheels, Fact. Tow Pkg., Only 7,700 Miles



**SHORTBED SUPER CAB**  
2001 CHEVY 2500 4x4  
Nice Driver, Very Clean Duramax Diesel, Allison Auto, Loaded, All Options, Alloy Wheels, Tow Pkg., Limited Slip Axle.



**4 DOOR SHORTBED**  
2000 FORD F350 XLT  
Nice To Look At & Very Nice To Drive, Powerstroke Turbo Diesel, Auto, A/C, Loaded XLT, Alloy Wheels, Tow Pkg



**6 SP CUMMINS**  
2002 DODGE 2500 QUAD CAB 4x4  
Very Strong Truck, Loaded, Laramie SLT, A/C, Overhead compass, Remaining Fact Warranty

## FLATBEDS, WORK & DUMP TRUCKS



**CARGO VAN**  
2002 CHEVY 3500  
1 Piece Fiberglass Body, Lift Up Rear Door, Only 39,000 Miles, V8 Auto, A/C, Only \$19,900



**ONLY 1000 MILES**  
2003 GMC 4500  
Duramax Diesel, Allison Auto, A/C, 16ft Steel Bed, Like New But Much Less  
Only \$29,900



**ON BOARD FUEL TANK**  
99 FORD F350 SUPERCAB  
Mechanic's Truck, 4 Wheel Drive, Powerstroke Turbo Diesel, Auto, A/C, 54,000 Miles



**ALUMINUM ROLLBACK**  
2000 FORD F550 SUPER DUTY  
18 Foot Body, Powerstroke Turbo Diesel GSP, Loaded XLT, Heavy 19,000 GVW, Keyless Entry, Tool Boxes, Wheel Lift, Remaining New Tk Warranty



**4x4 L-PAK DUMP TRUCK**  
2002 FORD 550  
Rare Find PowerStroke Diesel, Auto A/C L-Pak, Tool Box, Tow Pkg., Only 21,000 Miles



**CAB OVER DUMP**  
98 CHEVY W-4  
Only 45,000 Miles, Diesel Power, 5 Sp Manual, 12 Foot Steel Bed, Only 45,000 Miles



**68,000 ACTUAL MILES**  
98 DODGE DUMP TK  
360 V8 Auto, 2-3 Yard Dump Body, Runs & Drives Very Nice  
\$7,900



**DIESEL CARGO VAN**  
2001 FORD F350 SUPER CARGO VAN  
Very Clean Inside & Out, Powerstroke, Auto., A/C, Heavy 9,400 GVW, Only 40,000 Miles, Remaining New Tk Warranty



**4x4 FLAT BED**  
2001 CHEVY F3500  
Very Nice Only 30,000 Miles, High Output 6.5 Turbo Diesel, Auto, A/C, Fact Snow Plow Prep



**4x4 DUMP BODY**  
95 FORD F350  
Runs & Works Great PowerStroke Turbo Diesel, Auto, Tow Pkg  
\$16,900



**SUPER CAB DUMP**  
2000 FORD F350  
A Very Desirable Truck, Clean, Only 65,000 Miles, V10, Auto, A/C, 9 Ft. Body, Insp. & Services  
\$21,900



**STAKE BODY**  
97 FORD F350  
Very Clean, Only 48,000 Miles, 5.4 Triton V8, 5 Spd., A/C, New Service 7 Insp Ready to Work  
\$18,900



**17 FOOT CUBE VAN**  
97 FORD F450 SUPER DUTY  
Heavy 14,000 GVW, Rear Lift Gate, Powerstroke Turbo Diesel, Auto, A/C, Local Trade, Only 68,000 Actual Miles



**4x4 CHASSIS**  
2001 DODGE 3500  
Short Wheel Base 60" C/A, 24 Valve Cummins Turbo Diesel, Auto, A/C, Limited Slip 4.10 Axle



**2003 FORD 750 CHASSIS**  
Only 11,000 Miles, 33,000 GVW, Diesel Power, 7 Sp Trans., A/C, 2 Fuel Tanks, Brand New, Dealer Cost: \$38,800 Our Price \$35,900

Nicest Trucks In the East • Nicest Trucks In the East • Nicest Trucks In the East • Nicest Trucks In the East • Nicest Trucks In the East • Nicest Trucks In the East