

7511 Allentown Blvd.
Harrisburg, PA 17112

**75 TRUCKS
IN STOCK**

**AFFORDABLE
CARS AND TRUCKS, INC.**

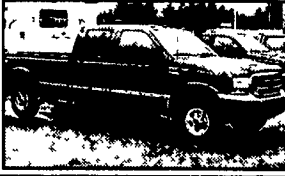
"You Gotta Believe!!"

New Exit #72A, Rt. 81 N; Rt. 22 East of Harrisburg; 3 Miles North of Hershey Park

717-652-1925
FAX 717-652-4888
Hours: Mon. & Tues. 9-9
Wed. thru Sat. 9-6

99 FORD F250 LARIAT 4x4 SUPER DUTY,

Crew Cab, Longbox 7.3 Powerstroke 6 Spd AC Leather Every Possible Option & Absolutely Showroom New Condition, Only 100,000 Miles
\$21,995

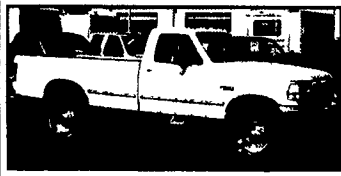


98 DODGE RAM 3500 4x4 1-TON DUALY,

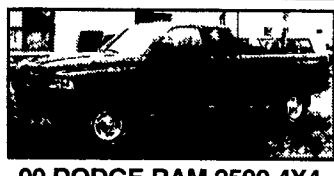
SLT Laramie, Quad Door, Longbox, 5 Spd Cummins Dsl, All Options, 160K, This is one Clean Truck, Looks Like 50K!!!
\$17,995



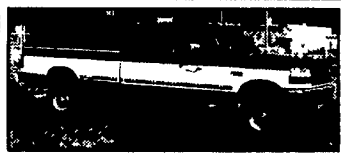
**86 CHEV SILVERADO
1500 4X4,**
V8 350, AT, 80K
No Rust, Nice Clean Truck!
\$4,995



96 FORD F350 XLT 4x4
7.3 Powerstroke Dsl, 9000 GVW, AT, AC, PW, PDL, Cruise, Tilt, Stereo & More Only 80K This is a "10"
\$17,500



**00 DODGE RAM 2500 4X4
SLT LARAMIE QUAD DOOR,**
Longbed Cummins Turbo DSL, AT, AC, PW, PDL Leather Interior This Truck Is All Black & Like New, 102K
\$19,995



**97 FORD F350 XLT 4x4
CREW CAB**
Long Box, 7.3 Powerstroke Dsl, 5-Sp AC, PW, PDL, Leer Matched Cap, Loaded & Flawless, 100,000 Mi
\$18,995



**99 FORD F350 XLT 4x4
SUPERDUTY**
9900 GVW, 7.3 Powerstroke DSL, Rare 6 Speed, Only 80K Absolutely like new condition with no flaws with all power equipment!!
\$19,995



**95 FORD XLT F-350 4X4
1-TON H.D. PICKUP,**
7.3 Powerstroke Dsl, 5 Sp, AC, PW, Pdl, Tilt, Cruise & Much More 107K, Looks & Drives Like New!
\$14,500



**98 CHEV 2500 4x4
SILVERADO H.D.**
8600 GVW, 350 Vortec, AT, AC, PW, PDL, Tilt, Cruise and More, 99K Very Sharp Truck!
\$11,995



**95 DODGE RAM 2500 4x4
LARAMIE SLT**
Cummins Turbo Dsl, AT, AC, PW, PDL, Tilt, Cruise, Towing & More, 169K, Extra Nice 1-Owner
\$8,995



**96 GMC SIERRA 4X4 H.D.
2500 EXT. LONGBED**
8 Lug, 8,800 GVW, 350 Vortec, AT, AC, PW, Pdl, Tilt, Cruise, & More 100,000 Mi, Super Clean, 1-Owner!
\$10,500



**97 FORD F150 XLT 4x4
EXT. CAB,**
3rd Door, Shortbox, V8, AT, AC, PW Pdl, Tilt, Cruise & More, All Black Very Clean! 130,000 Mi,
\$10,995



**00 FORD F250 4X4 XLT
SUPER DUTY QUAD DOOR,**
Longbed, 7.3 Powerstroke Dsl, 6 Sp, AC, PW, Pdl, Cruise, Tilt & More Only 70k, Like New!
\$21,995



95 FORD F150 XLT 4x4
6 Cyl, 5-Sp, AC, Full Power, 2 Tone Paint, Very Clean 2 Owner Local Truck 130K, 27 MPG's
\$5,500



99 FORD F250 XLT 4X4,
Super Duty Crew Cab, Longbed, 5.4 Triton, AT, AC, PW, PDL, Tilt, Cruise, Extra Sharp, 100,000 Mi
\$15,500



95 FORD F250 XLT 4x4
Longbed, 5.8 V8 351, 5 Sp, 8800 GVW, Only 90K, AC, PW, PDL, Cruise + Tilt, Showroom Looking Condition
\$9,500



**98 DODGE RAM 3500 4x4
QUAD DUALY LARAMIE SLT**
Cummins Turbo Dsl, 5 Sp, AC, PW, PDL, Cruise, Tilt, Towing, Only 70,000 Miles, All Black Still Just Like New!!
\$21,999



**99 FORD E250
CARGO VAN**
Triton V8, Gas, AT, AC, PS, PDL, Racks Inside, Nice Clean 100,000 Mi Van Ready to Work!
\$7,995



**99 FORD F350 XLT LARIAT
4X4 SUPER DUTY
QUAD DOOR LONG BOX**
7.3 Powerstroke Dsl, AT, AC, PW, Pdl, Tilt, Cruise, Stereo, CD, Leather & More Black Truck, 140k & Looks New Guys!
\$18,995



99 FORD F250 XLT 4x4
7.3 Powerstroke DSL, 8600GVW, AT, AC, PW, PDL, Tilt, Cruise, Matched Cap, Perfect Shape In & Out, Well Services, 100,000 Mi
\$16,995



89 FORD F150 XLT 4x4
302 V8, AT, AC, PW, PDL, Tilt, & More 130K Local, Clean Truck!
\$3,995



97 FORD F150 XL 4x4
6 Cylinder, AT, AC, Cloth Interior, Only 80K, PA 1-Owner Truck, extra clean vehicle!
\$8,995



**97 CHEV 3500 4x4 H.D.
CHEYENNE**
350 Vortec, 9,000 GVW, AT, AC, Sterop, All Black & Very Clean 130,000 mi
\$9,500

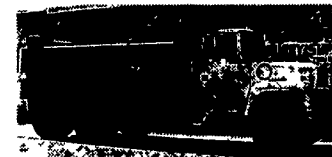
Disclaimer Mileage listed for your convenience only, it is approximate, not to be relied on as exact Sorry for any inconvenience



1996 FORD F450 XL, 460 V-8 Ford, 5 Spd 11' 6,000 lb Crane Reinforced Service Body, 6,000 lb Hydraulic Autocrane w/Remote Control, Manual Outriggers, Ingersoll Rand T-30 Air Compressor, Pintle Hitch, Vise, Oxygen/Acet Hold Downs, Air Condnion, Cruise Control, AM FM Cassette, GVWR 15,000 lb, S/N #170190, \$19,500



1989 FORD F450 XL, Diesel International, 5 Spd OD, White, 13' Crane Reinforced Body, 2001 IMT Model 2020 Electric/Hydraulic 5,000 lb 20' 11" Reach, Manual Outriggers, Kohler Gas Air Compressor, 24" Work Bench Bumper; 6.9 Liter Diesel, 14,500 GVWR, S/N #170191, \$14,500



1997 FORD LT9000, 3176 Caterpillar 365 HP, 8LL Spd, Rubber Block Suspension, 4.33 Ratio, 22 SLP Tires, All Steel Wheels, White, 18,000 lb Front Axle, 40,000 lb Rear Axle, 385/65R22.5 Front Tires, Taper Frame, 16' J Craft Steel Bed with Tarp, S/N #130158, \$29,900



1990 PETERBILT 357, 34068 CATERPILLAR 325 HP, 8LL Spd, Handrickson Suspension, 4.33 Ratio, 22.5 Tires, Tri Axle, White/Black, Rear Dump, 12,000 lb Front Axle, 40,000 lb Rear Axle, 16' Steel Dump, Electric Tarp, S/N #130153, \$24,500



Curry Supply Co. 1-800-345-2829
Curryville, PA 814-793-2829

Mansfield Truck & Equipment Co., Inc.

4864 W. Roosevelt Hwy. (Rt. 6), Mansfield, PA 16933

Phone (570) 723-1834 Fax (570) 723-1823

Heavy Truck Parts - Custom Truck Bodies - Snow Control Equipment
Complete Service Department



International Paystar Log Truck with Prentice 120c Log Loader w/Continuous Rotation Grapple
\$13,000 OBO



Chevy Conversion Van, Fully Loaded, Four Captain's Chairs and a Couch, Color TV
\$7,000 OBO

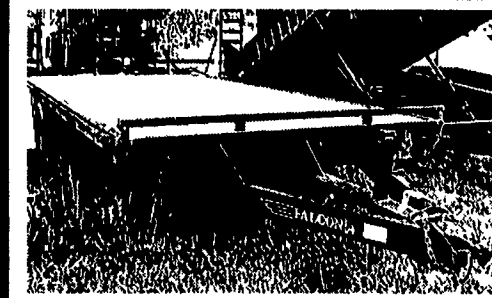
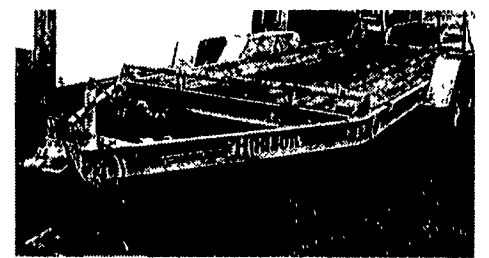


1979 Ford, Cat 3208 Engine 210HP, 13 Speed Transmission, 20 Foot Dumping Steel Flat Bed with 12 inch Sides
\$11,000 OBO

- 1990 Mack RD 690 Long Wheel Base, 44,000 Rears, 250HP Engine, 5 Speed Trans **\$16,500 OBO**
- 1993 International Navistar, Cat 350 Engine, 9 Speed Trans, 48" Flat Top Sleeper, 40,000 Pound Rears, Good Tires **\$11,900 OBO**
- Case 600 Back-Hoe Loader, Runs Good **\$5,000**
- Hough Loader, Gas Engine, Runs Package Deal Includes 2 Extra Machines 1 Has a Back-Hoe Attachment **All for \$2,900**
- 2 Concrete Mobiles, 1 Mounted on a R-Model Mack Chassis, 1 Mounted on Diamond Reo, **\$5,500 \$6,500**

Delivery Available

1997 Hudson
16' 10,000 #GVWR
Lo Pro Equipment
Hauler, Excellent
Condition.
\$1,900



1998 Falcon
20' Deckover
w/4' Beavertail.
10,000 #GVWR
\$2,200



6 Ton 'AgriKing' Gooseneck **\$4,450**
16500# GVWR
Available in Pintle Hitch

KEYSTONE TRAILERS Inc.

• SALES • PARTS • SERVICE • HITCHES
1657 Rohrerstown Rd. • Lancaster, PA 17601
Phone 717-581-9020 • Fax 717-581-9055
www.keystonetrailers.com
Leasing & Financing Available
Mon.-Wed.-Fri. 8:00 a.m. to 6:00 p.m.
Tues.-Thurs. 8:00 a.m. to 5:00 p.m.
Sat. 8:00 a.m.-12:00 noon

Motorcycle - ATV - Snowmobile
Utility - Landscape - Cargo
Car Haulers - Race Trailers
Hydraulic Dumps - Concession
Construction - Equipment Haulers
1500# to 12 Ton Capacity
8' to 48' Length
Replacement Parts - Accessories
Lighting - Wiring Hitches & Towing
Accessories Brake Control - Ramps -
Tie Downs - Tool Boxes - Motorcycle
Carriers - Cargo Carriers - Wheels &
Tires - Bicycle Racks - Load Control
Straps & Equipment
On Site Tag, Title & Registration

**90 DAYS SAME AS
CASH AVAILABLE**