



1984 White
Triaxle 24' Dump,
Roll tarp, 400
Cummins
13 speed,
11 x 24.5 rubber.
\$19,500
(717) 733-7226

35 TRUCKS AND TRAILERS

1974 Ford F600, 12' dump bed w/grain tailgate, 90K mi, good cond, \$1,400. 610-488-1606.

MACK Heavy Duty Roll-back, 1984 DM 24' Weld-built bed w/dock leveler, 300, 5 spd, exc. cond. \$34,500. 856-694-0735.

1978 F700, 19ft flatbed, 27,000 GVW, 68,000 mi, \$2750. 717-677-9241 eves

www.useddieseltruck.com
CHECK IT OUT

92 Ford Explorer xlt, 4dr, 116K, G cond, New 4wd motor & tires, 1st \$3,800. Hamburg @ 570-972-2864

1988 Chev. P-30, Alum Step Van, sliding pass. door, roll-up rear door, dual rear wheels, 14' bed, was a Saffty-Kleen truck, rebuilt eng. 4800 mi. \$3,500 610/696-5839, 5-7 pm

1995 Dodge 2500 SLT, V10, 5spd, Loaded, Extra Clean, Bed Liner, Cap, One Owner. 570/995-5056.

'86 Mack tandem dump truck, 350 eng, Jake brake, 14ft steel box, 15 spd Fuller trans, \$10,000. 717-485-5379

'90 IH cab over, 100K on in frame, 85% tires & brakes, \$8,000 obo. 570-345-6490.

M37 Dodge 3/4 ton restored military vehicle w/portable garage, asking \$8,495 obo. 610-857-5792.

1989 Ford F150 XLT 4x4, 302 auto, \$2,900 obo. 610-857-5792.

'73 Chevy C65 cabover w/18ft steel dump & hoist. Rebuilt 366 w/less than 1000 miles, runs well, air brakes, custom bed w/Omaha Standard sides, \$3000 obo. 410-259-2387

'94 Dodge 3500 p/up, long bed, 6 cyl, 5 spd, 2wd, AC, AM/FM, PS, approx 250,000, fair cond. '01 Case 1845C uni-loader skid steer w/D125 backhoe attach, approx 2720 hrs, good cond. '00 Appalachian trailer, good cond. All for \$23,200. If interested, Call 717-464-9060 ext 108 ask for Lori

New & Used Reefers, Vans & Flats, Call Bill Troop, at Utility, Keystone 717/492-2609.

'94 GMC 1/2T 4X4 X-cab, short bed, T-dsl, looks, runs good, MD inspect, \$5,500. 301-834-7486.



1989 Rice 2 Place Horse Trailer, Front & Rear Ramps, 7'6" High Surge Brakes, Torsion Axles, Very Good Cond.

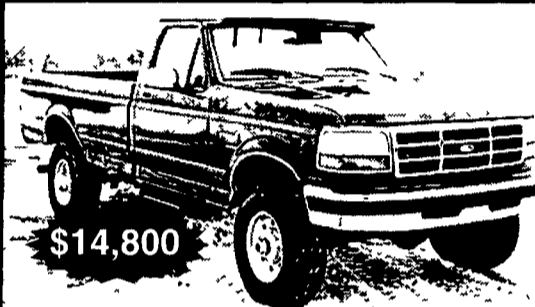
570-943-2077



1984 MACK MODEL DM686S 26' TANDEM AXLE CHASSIS AND CAB, 300 Mack engine (275 hp), 6 sp Mack trans P/S, A/C, 20,000 lb front axle 44,000 lb rear axles on camelback suspension double frame, Jake brake, hi tread tires on cast spoke wheels. This truck is extremely clean

Camden Truck

856-456-4030 215-925-0322



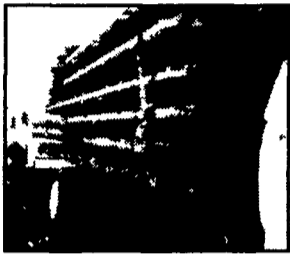
WM. COHEN & SONS, INC.

"THE TRUCK PARTS STORE"

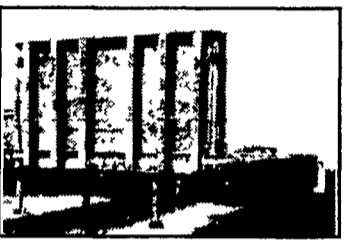
HEAVY DUTY TRUCK PARTS - NEW & USED - REBUILT REARS & TRANSMISSIONS
610-269-1298 Fax 610-269-0787 www.cohentruckparts.com



1990 GMC 7000 DT-506
Detroit 8.2 Diesel, 5 Speed, 2 Speed Rear, 7,000 Lbs, 19,000 Lbs Rear, Hydraulic Brakes, Salt Spreader, 12 Ft Angle Plow



New Flatbeds Available
Sizes currently available are 12', 14', 20', 22' and 24' Racks are also available



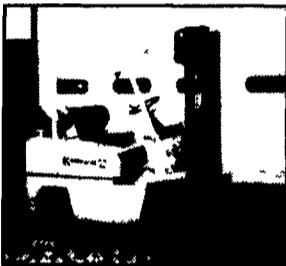
(9) 40' - 45' 1970's & Newer Steel Flatbed Trailers (also have drop deck trailers) some have sliding tandems, all in good condition \$2,500/Ea. and Up



Michigan Loader Model L30
Quick Coupler, Comes With 1 Yard Bucket and 60" Forks, Runs Excellent



Aluminum Tanker/Trailers
7500 gal and up



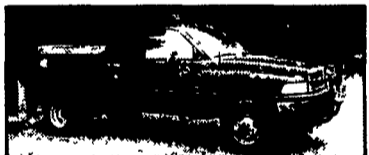
Kalmar Forklift, Propane Powered,
4435 lb capacity, 42" forks, 192" lift, cushion tires, 2194 hours



1989 GMC Kodiak, 3208T Cat Engine
5 Speed, 2 Speed, 4 Door Cab, P/S, 167" wheel base, 35,000 lb G.V.W 108,614 miles, 10x20 tires, hydraulic brakes, ball hitch setup for gooseneck trailer



99 FORD F350 CREW CAB 4X4
AT, Powerstroke Diesel, A/C, XL, AM/FM/Stereo, 74K Miles, White



95 DODGE 3500 4X4 DUMP w/PLOW
V-10, AT, A/C, only 48K Miles, Blue



96 FORD F350 CREW CAB DUALLY-POWER STROKE DIESEL
2 WD, XLT, AT, A/C, Most Options, 94K Miles, Red



99 DODGE 2500 QUAD CAB 4X4
Cummins Diesel, SLT, AT, 33K Miles, Green #D384
2 In Stock



93 DODGE 2500 DUALLY HAULER
w/Sleeper Compartment, AT, A/C, Cummins Diesel PL, PW, C T Only 60K Miles, Burgundy



95 FORD F800 12 FT. DUMP
26K GVW, 370 V8, 5 Spd., 2-Spd Rear, 35K Miles, Red

OVER 120 TRUCKS
Preferred Warranties Available on Most Trucks

Bobby Gerhart's

Truck World

2400 E. Cumberland St. Rt. 422 Lebanon, PA 17042

Mon. - Fri. 9-5, Sat. 9-3

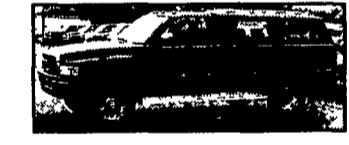
717-273-7995



00 FORD F250 4x4
Power Stroke Diesel, XLT, 6-Spd., A/C, Most Options, Only 40K Miles, Maroon



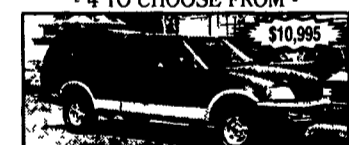
99 FORD F250 QUAD CAB
4x4 Lanat, CD Player, Power Stroke Diesel, AT, A/C, Most Options, 50K Miles - 4 TO CHOOSE FROM -



97 DODGE 2500 4x4 SLT
Cummins Turbo Diesel, AT, A/C, Most Options, Black & Silver, 99K Miles



00 CHEV 3500 WALK-IN UTILITY BODY
AT, A/C, C. T. 454 V8, White, 59K Miles



97 FORD F150 SUPER CAB 4x4
AT, XLT, 5 4 V8, A/C, Most Options, Green, 134 K Miles



97 FORD F250 SUPER CAB 4x4
Power Stroke Diesel, AT, XLT, A/C, Most Options, 144K Miles, Green



96 INTERNATIONAL 4700 CAB/CHASSIS
LoPro T444E Diesel, 4 Spd., Allison AT, 145 WB, 84 CA, 21,000 GVW, A/C, 72K Miles, 2- To Choose From



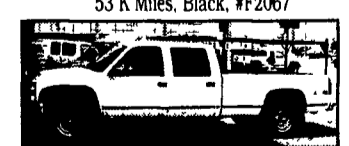
01 FORD F350 CREW CAB 4x4
V-10, AT, XLT, A/C, Most Options, CD, 53 K Miles, Black, #F2067



97 FORD SUPER DUTY XLT
17 Ft. Ramp Truck, Power Stroke Diesel, AT, A/C, Black \$10,995



95 DODGE 3500 4X4 12 Ft. Stake Body Dump
Pwr Angle Plow, 360 V8, 5-Spd., A/C, 85K Miles, White



2000 CHEV. 3500 CREW CAB 4x4
AT, 350 V8, A/C Cass., 44,000 Miles, Ladder Rack, White, #C641



00 FORD F350 4X4 XLT
Power Stroke Diesel, AT, A/C, Most Options 42K Miles, White #F2079



1995 CHEV TOPKICK DUMP
Allison AT, V8, 21,000 GVW, White, Low Miles



95 FORD F350 CONTRACTOR DUMP
351 V8 5-Spd PS, PB A/C, 81K Miles Red Ready to Work #F2004



2000 CHEVY 3500 HD
15000 GVW, Contractor Dump 5 Spd 454. 37 000 Mi



99 GMC 3500 CREWCAB DUALLY 9 FT. FLATBED
w/Both Hitches, 454 AT, PS, PB, A/C, 29 000 Miles, White, Perfect Condition! #G233



00 CHEV 2500 EXPRESS VAN
AT, A/C, 350 V8, AM/FM, 42K Miles White, #C632



71 FORD 900 TANDEM AXLE DUMP
52,000 GVW, V8, 10-Speed Split Shift Excellent Farm or Site truck, PA Inspected



92 FORD F350 SUPER CAB DUALLY-CENTURION
7 3 Diesel, AT, A/C, Most Options, 56K Miles, White, #F2035



95 FORD F800 16 FT. STAKEBODY W/LIFTGATE
5 9-230HP Diesel, 7-Spd Only 33K Miles, 30K GVW White



97 FORD F350 10 FT. FLATBED
2WD, 5-Spd., 351 V8, A/C, 16K Miles, Red #F2076