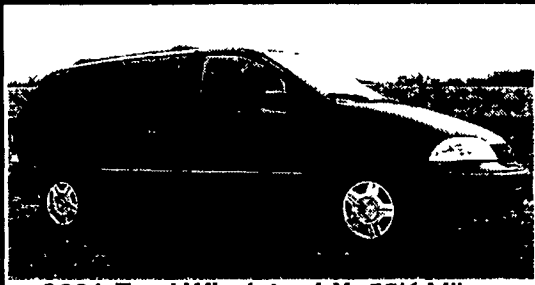


34 AUTOS



2001 Ford Windstar LX, 55K Miles,
Front & Rear A/C, Dual Sliding Doors,
Privacy Glass, Loaded!
Factory Black w/Grey Interior.
\$10,250 (315) 651-1964

2000 Volkswagon Jetta TDI, 5 speed, 8900 mi, loaded, Black, 48 MPG. 717-354-3199

95 Chrysler Sebring, light front hit, runs/drives vry gd. high mileage, mostly highway mi. \$1,700. 570-966-0402 or 570-412-6555.

93 Chevy Caprice 350 eng. gd cond. \$2,500 717/733-9367.

93 Ford Tempo, 4dr, V6 auto, PS, PB, cruise, tilt, air, 80,000 miles, black, \$1,800. 717-733-2873

35 TRUCKS AND TRAILERS

98 Dodge 1500, short whl. base, 8 pass., 3.9 V6, auto, PS, PB, PW, PDL, cruise, tilt, air, AM/FM Cass., 39,000 miles, \$10,500. 717-733-2873

97 GMC SL 1500 Suburban, 2WD, 350 auto, PS, PB, cruise, tilt, air, Am-Fm cass., towing package, 78,000 miles, ex. condition, \$9,900. 717-733-2873

99 Chevy Express 3500 extended, 11 pass, 6.5 dsl, auto, PS, PB, dual air, Am-Fm, 57,000 miles, dark blue, \$12,500. 717-733-2873

00 Chevy Express 3500 extended, 5 pass, work van, 350 auto, PS, PB, PW, PDL, cruise, tilt, dual air, Am-Fm cass, 90,000 one owner miles, \$10,900. 717-733-2873

97 Chevy Cheyenne 2500, extended cab, 2WD, 350 auto, PS, PB, cruise, tilt, air, AM-FM Cass., towing package, 8,600 GVW, 63,000 one owner miles, \$10,900. 717-733-2873

00 Dodge 1500 Quad Cab, 4 Dr., 2WD, 360 auto, PS, PB, cruise, tilt, air, 6,400 GVW, 58,000 one owner miles, dark blue, \$12,900. 717-733-2873

00 Chevy S10 extended cab LS, 2WD, 4 cyl, auto, PS, PB, cruise, tilt, air, 47,000 one owner miles, new radials, \$7,950. 717-733-2873

1985 C70 Chevy grain truck, 16' all steel grain body, 15 ton scissor hoist, dsl eng, 5+2, 26K GVW, new inspec, all good cond, asking \$5,500. Eves, 717-786-1119.

MGM 4-ton trailer 6 1/2 x 12 w/ramp gate, dual axle, dual brakes \$925; Leer Black Truck Cap, fits 8' bed, yrs from 93 - 97, \$225. 717/805-2484.

91 LN8000 Ford, 210 hp dsl, 6 spd, air brakes, 33K GVW, 22' flatbed, \$5,900. 800-554-6937, ext 214.

97 Dodge Ram 1500 SLT, V8, 4wd, bedliner, AC, auto, garage kept, 75k, new trans, w/warranty, \$10,500. 717-692-5714 ask for Mark

Restored 1957 Mercury Montclair, 1 owner. Numerous Model T Ford parts. 814-355-4613 After 7 pm

SAVE. STORAGE OR ROAD TRAILERS, 20' or 40' GROUND LEVEL CONTAINERS. PROMPT & COURTEOUS SERVICE. REASONABLE RATES. YOUR STORAGE SOLUTION, INC. 610/921-1955, 1/800-220-6082

1991 Chevy Suburban 4x4, 8 pass, 141k miles, new tires, ex running cond, \$5000. Call Campground 717-789-2117

White Road Boss tandem, roll offs, 60,000 lb Gelbreath hoist, w/2 containers, 30 & 40 yd, Cummins eng, 10spd, good starter truck. 610-944-9871, 610-858-4092

78 Ford 700 dump, low miles, new eng, rebilt trans, new paint, \$5500. 717-249-3613

2002 Chevy Siverado, 1500-HD, crew cab, short bed, 6.0 liter, loaded, 22,000 mi, \$29,000. 717-860-3936

R model sleeper box, like new, \$500 or will trade for G cond R model cab. 717-263-4139

After market-air ride kit to be mounted on Reyco suspension. This will improve the ride, 717-263-4139

35 TRUCKS AND TRAILERS



96 Marmon, 200,000 orig. miles,
425 Cat, 9 speed Wet Line, Clean
Truck, 89 Ravens Frameless
Dump Spread Axle, 40' 102'
Ph. 717-860-8867

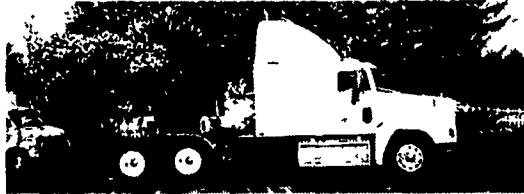
3 School busses, 66 passenger, (1) 91 Chevy gas, (1) 91 Chevy dsl w/5spd, (1) 91 int. dsl. 410/833-7833 ask for Ken, 410/876-6580

85 FORD F250, 4x4, dsl, 4spd, insp, body rough, 178k \$3,000/OBO 814-349-8316.

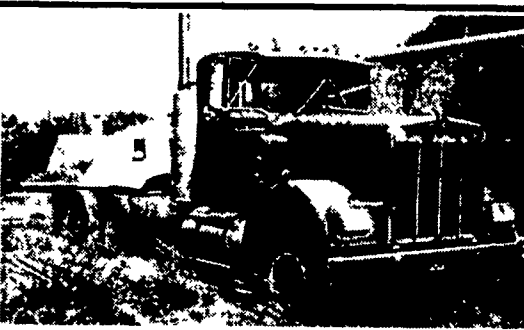
1981 GMC cattle truck, 17' Eby alum. body, \$1200 OBO. 610/987-6136

1998 Ford Louisville Trk, 30k mi, 33k GVW, single axle, dsl, Cummins 300hp eng. Mon-Fuller 9 spd, AB, Front 11Rw.5, Back 11RE22.5, 75% tread on ea, alum wheels, DOT insp, 14' steel bed; 1990 Knuckle Boom (located behind cab) Hiab-Mdl 140, has pump, 13,230 ton of 67", asking \$48,000/OBO 610-689-8936.

Good Truck Cheap



1994 Freightliner, Fid 120, 48" Flat Top,
430 Hp. Detroit Diesel, 9 Speed O/D,
4:11 Rears
- \$6,500 -
(717) 432-3348
Cell (717) 319-4527



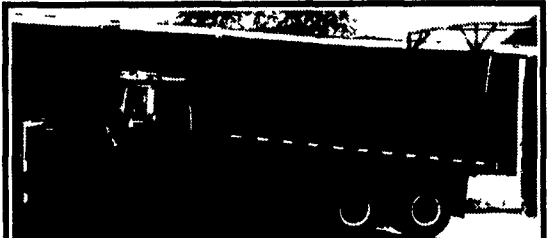
1980 Kenworth W900A
V-6-92, 10 speed, Rockwell rears, AC, PS,
airdryer, new batteries & steering tires, runs well
Must sell! \$4,500 obo
Lancaster Co., 717-951-1937, Chuck



89 Ford Tri Axle Dump, 400 H.P. Cummins,
8 Spd. LL trans. 18' Steel Dump, 46,000 Rears, 18,000
FA. AC, Dual 6" Exhaust, Nice Shape. **\$19,900/obo**
CALL: 1-888-828-3429



99 Dynaweld Mechanical Detach Trailer
35 Ton, Air Ride, 28' Well
\$17,500
Weaver's Truck & Equipment
570/523-9598



1980 Ford 9000, 238 hp, 13 speed,
60,000 GVW w/18 ft steel dump,
hyd silage tailgate & grain chute.
Excellent Condition
\$15,250 610-476-2731

THE HONDRU EXPERIENCE

OVER 200 TRUCKS AVAILABLE FROM OUR 4 DEALERSHIPS

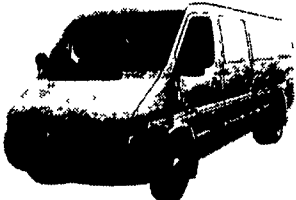
E-TOWN DODGE

Route 230 E-Town • 717-367-6644
877-924-6644

1999 DODGE RAM 3500



Quad Cab, Dually,
Laramie SLT, 4x4,
Cummins Turbo
Diesel, Equipped



COME SEE THE ALL NEW DODGE SPRINTER VANS AT E-TOWN DODGE.

E-TOWN CHEVROLET

Oldsmobile Pontiac
Route 230 E-Town • 717-361-7776
877-924-6644

2002 CHEVY AVALANCHE



4x4, V-8, Auto,
Leather, North
Face Edition,
Equipped

PHILLIPS FORD

Route 72 Manheim • 717-665-3551
877-597-3551

1997 FORD E250

Cargo Van,
V-8, Auto, AC
\$9,495



1999 FORD F450

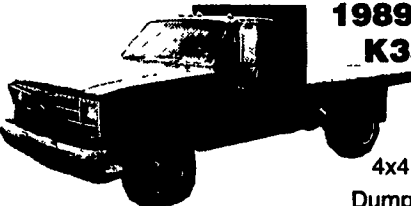


Cab & Chassis
Diesel, A/C,
Manual Trans.,
Dual Rear Wheels
#3F638A
\$16,995

2002 FORD F250 CREW CAB XLT, Auto, Power Equipment, V8, #3F1007A \$27,495

MANHEIM CHRYSLER GMC

Route 72 Manheim • 717-665-2473
877-603-2473



1989 GMC K3500

4x4, Flat Bed
Dump • **\$7,995**

2000 DODGE RAM 1500



8' Bed, V-8, Auto,
AC, PS, PB

2003 DODGE CARGO VAN - 3 Available
Racks, Shelving - Save Huge Dollars Over New Ones!
2003 JEEP LIBERTY SPORT 4X4 - V6, 5-Spd,
All Power Equip
2003 DODGE RAM 1500 - Quad Cab, Long Bed, 4x4,
Auto, V-8
2002 GMC 2500 HD - Crew Cab, Long Bed, 4x4, 6.0L V-8
2001 CHEVY 2500 H D REG CAB, 4x4, V8, AT, C, T Air

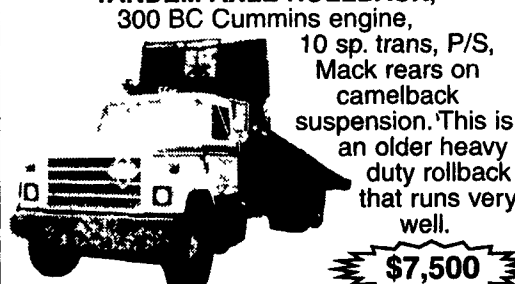
All prices Include Rebates, Exclude Tax, Tag and \$55 Doc Fee

LOADS OF USED PICKUPS CALL ANY STORE FOR DETAILS

Visit us @ www.hondruauto.com

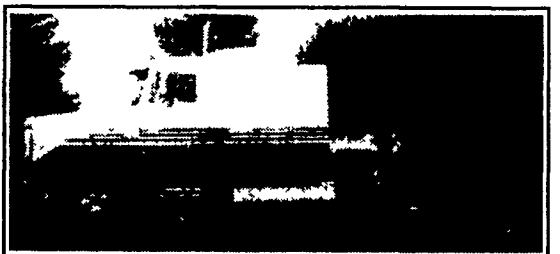
OVER 10 CHASSIS IMMEDIATELY AVAILABLE FOR BODY INSTALLATION AT OUR LOCAL BODY COMPANIES!

1986 INTERNATIONAL 2500 SERIES TANDEM AXLE ROLLBACK,



300 BC Cummins engine,
10 sp. trans, P/S,
Mack rears on
camelback
suspension. This is
an older heavy
duty rollback
that runs very
well.
\$7,500

Camden Truck
856-456-4030
215-925-0322



FOR SALE 1994 PETERBILT 400 CUMMINGS 10 SPEED \$12,000/OBO CALL 717-359-4689



FOR SALE 1987 FORD F350 DUALLY
11,000 GVW, AT, PB, 2 Fuel Tanks, 7x9 Heway Alum Body, Power Drag Unload, Fitted Tarp
\$2,900
Call 717-272-3225 Ask For Glenn