



**Clark GCX25** -  
5,000 lb capacity  
- cushion tire -  
mast 83/188  
triple - LPG -  
P/S - cab  
with heat -  
mid 90's  
ex. condition.

**C. Betz Fork  
Lift Sales**  
717-485-0410

**\$4,500**



**Hamm 54 inch Dirt Roller** . . . . . \$13,000

**Heavy Equipment Loader Parts**

Rt. 22 Grantville, PA

(717) 469-0039

help10070.com

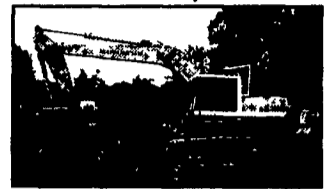
## Mid Maryland Rentals, Inc.

www.midmd.com  
midmdal@fred.net

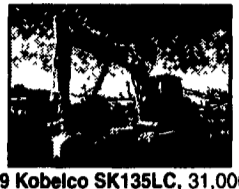
8865 Baltimore National Pike  
P.O. Box 186 Middletown, MD 21769

Phone: (301) 371-5500  
Fax: (301) 371-9299

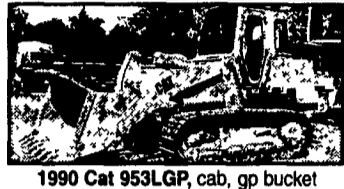
**Financing Available**



**1987 Komatsu PC 200LC3**, 30" bucket,  
good undercarriage & condition,  
work ready **\$19,000**



**1999 Kobelco SK135LC**, 31,000lb  
excavator, cab/ac, 42" bucket, 0 swing  
tail, v g u/c & condition, work ready  
**\$49,500**



**1990 Cat 953LGP**, cab, gp bucket  
w/teeth, new undercarriage, fresh paint,  
work ready  
**\$47,000**



**Telescopic Forklifts**, Gehl, JCB,  
Lull, Terex, 5,000-8,000 lbs, from  
**\$16,500**



**1985 Dresser TD8E**, orops, 6 way  
blade, fresh paint, good undercarriage,  
work ready **\$18,500**



**1986 Cat 953LGP**, factory cab, 4  
in 1 bucket, new undercarriage,  
v g condition, work ready, **\$39,500**

- 1988 Case 1155E, OROPS/sweeps, 4 in 1 bucket w/teeth, v g undercarriage & condition, work ready **\$23,000**
- 1989 Case 450C, long track, orops/sweeps, 6 way blade, good undercarriage, v g condition, work ready **\$18,000**
- 1993 John Deere 310D, orops, 2 wheel drive, standard hoe, 24" bucket, v g tires & condition, work ready **\$16,500**
- 1996 Rammax RW14D3-FMR, 33" padfoot trench roller, v g cond, work ready **\$6,500**
- Scattrak 1500D, gp bucket, auxiliary hydraulics, Kubota turbo diesel, v g tires & condition, 700 hrs **\$13,000**

### Equipment Rentals

Contractors, Business Owners, Farmers & Others  
You Don't Have To Buy Excavating Equipment For Your Jobs

**Rent From Us For Less!**



**CHIPPERS up to 18"**



**BACKHOES**



**TRACK LOADERS**



**PAVING ROLLER**



**DOZERS**



**EXCAVATORS**



**TRAILERS**



**VIBRATORY ROLLERS**



**SKID LOADERS**



**POST HOLE DIGGER**



**LASER GRADERS**



**REMOTE TRENCH ROLLERS**



**SKID LOADER HAMMER**



**DUMP TRUCK HAULING**



**BACKHOE w/HAMMER**



**EXCAVATOR w/HAMMER**



**MINI EXCAVATOR**



**EQUIPMENT TRANSPORTING**

More Machines Being Added, Call For Prices & Availability



**STONEY CREEK**  
**CONTRACTOR SERVICES**



415 Park Road, P.O. Box 327, Fleetwood, PA 19522  
610/944-5332 • Fax: 610/944-1562 • 877/944-5332

# JERRE MARTIN REPAIR

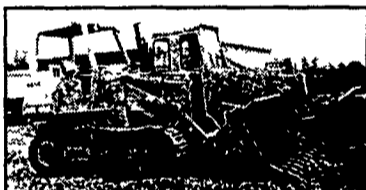
391 N. Farmersville Rd., Ephrata, PA 17522

(Just minutes off RT 222)

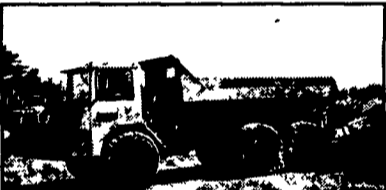
717-859-3283 Toll Free 877-317-5348

Celebrating  
Our 20th Year  
1983-2003

Celebrating  
Our 20th Year  
1983-2003



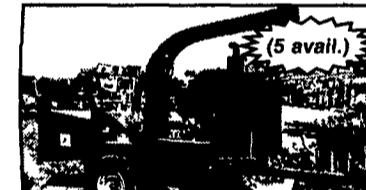
**93 JD 655B, LGP \$27,000**



**Cat D250B, 6x6  
\$33,000**



**'96 Cat 953C, New U/C  
\$70,000**



**Morbarck Eeger Beaver 12" Chipper,  
4 cyl. Cummins Dsl., \$7,900**



**Case 1845C \$8,500**



**JD 570A, Excellent \$16,200**



**'94 JD 410D, 2x4, Cab, Extend-a-Hoe  
\$15,500**



**Komatsu D21S Crawler Loader  
(Late Model) \$13,000**



**DJB D25 Articulated Dump Truck  
\$29,000**



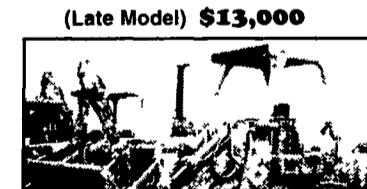
**Cat 951C \$14,700**



**JD 450 crawler loader,  
\$7,500**



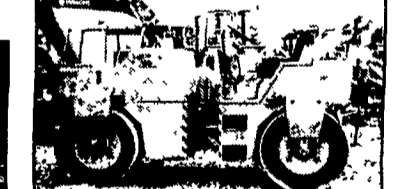
**JD 644C wheel loader, rebt. trans.,  
hyd. pump \$22,000**



**'80 Cat 955L Crawler Loader,  
13X Series, 4N1 Bkt  
\$19,500**



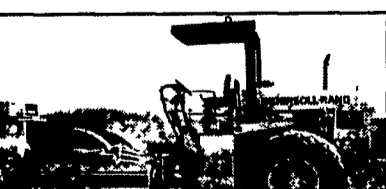
**Kubota L3450 4x4 w/Kubota  
3450 backhoe, 800 hrs \$14,500**



**Bomag BW141AD Double Drum  
Roller \$6,700**



**JD 350 crawler loader, new tracks,  
good cond. \$7,000**



**IR SD100D Roller \$32,000**



**Terex 3066  
\$25,500**



**'94 JCB 214 Series II, 2800 Hrs., QT Bkt  
\$22,500**

**'99 Cat 226 skid  
loader . . . . . \$15,000**

**'00 Lull 644, 34' telescopic  
forklift, 6000#  
capacity . . . . . \$36,000**

**'99 Kobelco SK150LC Mark IV  
excavator . . . . . \$52,000**

**'97 Bobcat 325  
mini-excavator . . . \$13,000**

**'91 Cat 963 Crawler Loader,  
like new U/C, cab . . \$40,000**

**'98 Cat 953C crawler loader,  
new U/C, cab air . . \$75,000**

- Sales
- Service
- Rental Repairs

**WE ARE BUYERS FOR LATE MODEL  
CONSTRUCTION EQUIPMENT NEEDING REPAIRS**  
Road Service Available Now, Custom Repairs  
On All Makes Construction Equipment