

(Continued from Page A12)

Round Green Type med 8.00 GA Round Green Type med 9.00 MD Round Green Type med 8.00 Red Type sml-med 8.00-9.00 NC Round Green Type med 9.00 NJ Round Green Type med 8.00-9.00 mostly 8.50-9.00 1 1/2 bucrts & 40 lb ctns NJ Savoy Type med 10.00 -CARROTS: MARKET ABOUT STEADY. sks 48 1-lb filmbags CA Topped med-lge 15.00-16.00 few 17.00 sks 24 2-lb filmbags CA Topped med-lge 16.00 sks 10 5-lb filmbags CA Topped med-lge 16.00 50 lb sks lse CA Topped jbo 15.00 CD Topped jbo 12.00 MX Topped jbo 13.00-14.00 ctns bchd CA Bunched 24s 12.00 ctns 24 1-lb filmbags CA Baby Peeled few 18.00-18.50 ctns 20 1-lb filmbags CA Baby Peeled 13.00-15.00 ctns 4 5-lb filmbags CA Baby Peeled slims few 17.50 -CAULIFLOWER: MARKET ABOUT STEADY. ctns flmwrpd CA 12s 14.00-16.00 mostly 14.00 9s 12.00-15.00 -CELERY: MARKET SLIGHTLY

HIGHER. ctns CA 1 1/2 dz 16.00 2 dz 15.00-17.00 mostly 15.00 few 14.00 few 17.50 2 1/2 dz 15.00-16.00 mostly 15.00 some 18.00 few 14.00 filmbags 24s 20.00 filmbags 30s 17.50-20.00 -CHINESE CABBAGE: MARKET STEADY. celcrts NJ 10.00 30 lb ctns CA Nappa 15.00 50 lb ctns NJ Nappa 12.00 -CORN-SWEET: MARKET WHITE SLIGHTLY HIGHER, OTHERS ABOUT STEADY. wbcrts GA Yellow 4-4 1/2 dz 8.50-9.00 mostly 9.00 White 4-4 1/2 dz 9.00-10.50 mostly 10.00 Bi-Color 4-4 1/2 dz 9.00 VA White 4-4 1/2 dz 8.75-9.00 -CUCUMBERS: MARKET LOWER. flts/ctns flmwrpd CD CDOne Long Seedless sml 12s 8.00-9.00 WAXED 1 1/9 bucrts/crts GA med ord qual and appear 3.00-4.00 UNWAXED 1 1/9 bucrts/crts NJ med 11.00-14.00 mostly 11.00-12.00 some low as 10.00 fr qual 6.00-7.00 mostly 6.00 few 8.00 lge 5.00 VA med fr qual 6.00-7.00 -EGGPLANT: MARKET ABOUT STEADY. 1 1/9 bucrts/crts GA med 10.00-12.00 fair qual 8.00 5 kg ctns NL sml 19.00-22.00 ctns/crts HD Chinese 25.00 one lot 17.50 35 lb ctns HD Japanese 35.00 30 lb ctns HD Thai few 4 5.00 Indian 31.00-33.00 -ENDIVE: MARKET STEADY. 1 1/9 bucrts/crts OH 9.00 10 lb ctns BL Wit-

loof few 11.00-12.00 -ESCAROLE: MARKET STEADY. 1 1/9 bucrts/crts NJ 10.00 OH 10.00-12.00 -GARLIC: MARKET STEADY. 30 lb ctns CQ White # 10-11 packaged 3s 18.00 # 9 17.00-18.00 Purple # 9 15.00 MX White super col 27.00 few 28.00 col 24.00 super jbo 22.50 -GREENS: MARKET ABOUT STEADY. ctns bchd CA Kale 24s 13.00 Swiss Chard 12s 13.00 Red 12s 13.00 mixed colors 16.00 ctns/crts bchd MD Collard 8.00-9.00 Kale 8.00-9.00 Mustard 9.00 Turnip Tops 9.00 Rape 9.00 NC Collard 7.00-8.00 Kale 7.00-8.00 NJ Collard 8.00 Kale 8.00 Dandelion 8.00 Swiss Chard Red 9.00 OH Mustard 24s 8.00-9.00 Turnip Tops 24s 8.00-9.00 ctns lse CA Kale Flowering 24s 14.00-16.00 -LETTUCE-ICEBERG: MARKET SLIGHTLY LOWER. ctns CA 24s 11.00-13.00 few 14.00 few 10.00 fair cond 6.00-7.00 Wrapped 24s 12.00-15.00 few 11.00 fair cond 10.00 30s 10.00-14.00 lge ctns CA Wrapped 24s few 13.00 -LETTUCE-OTHER: MARKET ABOUT STEADY. ctns CA Boston 24s 10.00 Green Leaf 24s 10.00-12.00 mostly 11.00 Red Leaf 24s 10.00-12.00 mostly 11.00 NJ Boston 24s 10.00 OH Boston 24s 10.00 ft crts NJ Bibb 24s 8.00 3 lb ctns CA Mesculin Mix 6.50-7.00 mostly 6.50 few 7.50

-LETTUCE-ROMAINE: MARKET ABOUT STEADY. ctns CA 24s 12.00-14.00 few 15.00 few 11.00 CD 24s 8.00 NJ 24s 8.00-9.00 OH 24s 9.00-10.00 1/2 crts foil lined CA 24s 17.00-18.00 -MUSHROOMS: MARKET STEADY. 10 lb ctns PA lge 14.75 few 14.50 med 12.00-12.25 4 qt bkts PA med-lge 7.00 sml-med 6.25 5 lb ctns PA Oyster 16.00 Portobellas 9.00-9.50 few 10.00 sml 8.00-9.00 3 lb ctns PA Shiitake 13.00 fair qual 10.00 Oyster few 12.00 ctns 12 8-oz trays flmwrpd PA 10.50-10.75 mostly 10.50 ctns 8 1-lb trays flmwrpd PA 14.75 ctns 10 10-oz trays flmwrpd PA 10.50-10.75 ctns 10 8-oz trays flmwrpd PA 9.50 -OKRA: MARKET ABOUT STEADY. 1/2 bucrts 10.00 -ONIONS GREEN: MARKET ABOUT STEADY. ctns bchd CA 48s one label 20.00 CD 48s 16.00 OH 48s 15.00-16.00 MX Leeks 12s 15.00 -PARSLEY: MARKET STEADY. 1 1/9 bucrts/crts bchd OH Curly 60s 10.00-12.00 mostly 11.00-12.00 Plain 60s 10.00-12.00 mostly 11.00-12.00 -PARSNIPS: TOO FEW SALES TO QUOTE -PEAS GREEN: MARKET SNOW PEAS LOWER, SUGAR SNAPS HIGHER. 10 lb ctns GU Snow Peas 15.00-16.00 Sugar Snap Peas 11.00-12.00 mostly 12.00 -PEPPERS: 1 1/9 bucrts CA Bell Type Green exlge few 24.00 GA Bell Type Green exlge 18.00 lge 16.00 med fair qual 12.00 sml-med 12.00 Mxd Red And Green lge 12.00 med-lge 10.00 NC Bell Type Green exlge 18.00-20.00 lge 16.00-17.00 mostly 16.00 med 14.00-15.00 fair qual 12.00 Mxd Red And Green lge 12.00-14.00 15 lb ctns CA Bell Type Red lge 22.00 5 kg ctns NL AIR Bell Type Orange 80-100mm 25.00 Red 80-100mm 22.00-23.00 Yellow 80-100mm 18.00-19.00 BOAT Bell Type Orange 80-100mm few 20.00 Red 80-100mm few 20.00 Yellow 80-100mm few 20.00 -PEPPERS OTHER: MARKET STEADY. 1/2 bucrts GA Finger Hot 10.00-12.00 Hungarian Wax few 10.00 Jalapeno 7.00-10.00 Serrano 18.00 Poblano 14.00-15.00 1 1/9 bucrts/crts GA Long Hot fair qual 10.00 few high as 12.00 Poblano few 22.00-23.00 bucrts HD Finger Hot 25.00 8 lb ctns TT Habanero green 18.00-20.00 30 lb ctns HD Thai Chili Hots Green 40.00 Red 35.00-40.00 -RADISHES: MARKET ABOUT STEADY ctns tpd 30 6-oz filmbags OH Red 5.00-6.50 mostly 5.50-6.00 Local Repack Red 6.00 ctns tpd 14 1-lb filmbags OH Red 5.00-7.00 Local Repack Red 7.00 40 lb filmbags tpd OH Red 12.00-14.00 ctns bchd OH Red 24s 8.00-10.00 -RHUBARB: OFFERINGS INSUFFICIENT TO QUOTE.

85% U.S. One or Better Mature Greens light red-red 5x6s 22.50 6x6s 21.50 6x7s 21.50 5 kg ctns on the vine NL AIR Vine Ripes Greenhouse light red-red med-lge 15.50-16.00 -TOMATOES, CHERRY: OFFERINGS LIGHT. flts 12 1-pt bkts NC light red-red 14.00 SC light red-red 14.00-15.00 mostly 14.00 flts 12 1-pt cntrs with lids SC Grape Type offerings insufficient to quote -TOMATOES, PLUM TYPE: OFFERINGS LIGHT. 25 lb ctns FL light red-red fair cond 20.00 -TURNIPS: MARKET ABOUT STEADY. 25 lb sks NJ Purple Top med 6.00-7.00 -VEGETABLES OTHER: MARKET STEADY. 8 lb ctns CA Radicchio 9s 9.00

Philadelphia Onions, Potatoes
Philadelphia Terminal Market
July 9, 2003
Report Supplied By USDA

ONIONS AND POTATOES -ONIONS DRY: MARKET ABOUT STEADY. US# 1 OR GENERALLY GOOD QUAL AND COND UNLESS OTHERWISE STATED. NEW CROP Yellow Granex GA 40 lb ctns jbo 26.00-28.00 some 24.00 Grano Type CA 50 lb sks jbo 9.00-11.00 mostly 10.00 ord cond 3.00 rpkr sz 15.00 NM 50 lb sks jbo 9.00-11.00 mostly 10.00 fair cond 8.00 rpkr sz 15.00 TX 50 lb sks Super Col 14.00 col 11.00-12.00 jbo 10.00-11.00 some 9.00 Hybrid WA 50 lb sks jbo 9.00-10.00 White CA 50 lb sks jbo 12.00-14.00 NM 50 lb sks jbo 12.00-15.00 Red Globe Type CA 25 lb sks jbo 6.00-7.00 med 5.00-6.00 NM 25 lb sks jbo 6.00-8.00 med 5.00-6.00 TX 25 lb sks jbo 9.00 -POTATOES: MARKET ABOUT STEADY. US# 1 SZ A WASHED OR BRUSHED UNLESS OTHERWISE STATED. Russet Burbank ID bld 10 5-lb sks non sz A 8.00-9.00 mostly 8.50 50 lb ctns 40s 10.00 50s 9.50-10.00 mostly 10.00 60s 10.00-12.00 mostly 10.00-11.00 70s 11.00-13.00 mostly 11.50-12.50 80s 11.00-12.00 mostly 11.00 few 10.50 90s 10.00-12.00 mostly 11.00-11.50 100s 10.00-11.50 mostly 10.00-11.00 some 9.50 120s 11.00 NEW CROP Round Red AZ 50 lb ctns sz B 13.00 NC 50 lb sks 11.00-13.00 mostly 11.00 sz B 13.00-14.00 VA 50 lb sks 10.00 sz B 15.00 Round White NC 50 lb sks 7.00 lge 10.00 VA 50 lb sks 7.00

Philadelphia Herbs
Philadelphia Terminal
Prices as of July 9, 2003
Report Supplied By USDA

MISC HERBS -ANISE: OFFERINGS LIGHT. 1/2 ctns CA 24s 15.00-17.00 -AR-RUGULA: 4/5 bucrts bchd NJ 24s 9.00-12.00 few 8.00 ctns bchd AL 24s 12.00 4 lb ctns CA Baby type 14.00 -BASIL: ctns bchd NJ 15s 10.00-12.00 1 kg ctns bchd IS 12s 11.00-13.00 -CELERIAC (CELERY ROOT): ctns CA 12s 11.00 -CHIVES: 1 kg ctns bchd IS 12s 18.00 -CILANTRO: 4/5 bucrts bchd NJ 30s 8.00-10.00 ctns bchd OH 30s 8.00-10.00 -DILL: crts bchd NJ 24s 12.00 -DRY ESCHALLOT: 10 lb sks CA 8.00 FR 8.00 NL 7.00-8.00 -LEMON GRASS: 30 lb ctns FL 30.00-32.00 -MARJORAM: 1 kg ctns bchd IS 12s 13.00 -MINT: ctns bchd NJ 12s 8.00-9.00 mostly 8.00 1 kg ctns bchd IS 12s 10.00 -OREGANO: 1 kg ctns bchd IS 12s 13.00 -ROSEMARY: 1 kg ctns bchd IS 12s 13.00 -SAGE: 1 kg ctns bchd IS 12s 13.00 -TARRAGON: 1 kg ctns bchd IS 12s 17.00 -THYME: 1 kg ctns bchd IS 12s 13.00 -WATERCRESS: ctns bchd WV 12s 7.50 24s 12.00

Seeking Growers/Producers

Phoenixville Farmers Market, Northern Chester Co., PA, is seeking specialty growers/producers for Sat. morning market.

We are seeking growers/producers of poultry, berries, cheese, fibers, dairy & meats. If interested in selling here one Sat. or all season contact.

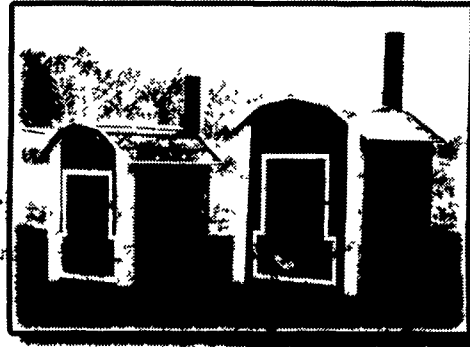
Bunny Schnell, Market Director,
610-832-6672

Wholesale Dealers Wanted

Cut flowers - Annuals & Perennial
Refton Flowers & Produce
Refton/New Providence Area
717-786-0388 lv. msg.



- Heat with wood and avoid expensive fuels
- Efficiently heat your home, domestic hot water, barn, or shop - all with one stove
- Heavy Duty design
- Wide range of sizes (up to 1.3 million BTU ratings)
- Slide-out ash pan provides for convenient ash removal and prevents excessive corrosion
- Enjoy the convenience and safety of an outdoor stove



Manufacturer and Distributor
Oak Tree Stove Sales
632 Elysburg Road, Danville, PA 17821
Phone: (570) 672-1096
Fax: (570) 672-3221

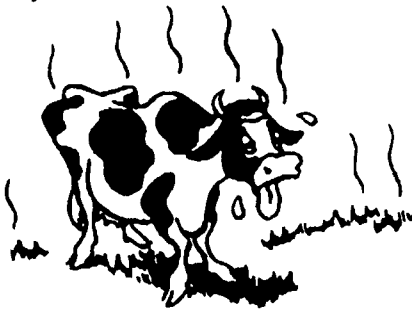
Excellent Features . . . you can always depend on

DAIRY STRESS PAK

A Source of Live (viable) Naturally-Occuring Micro-Organisms plus Vitamins, Niacin & Amino Acid Complexes for Dairy Cattle.

Some benefits of feeding Dairy Stress Pak:

- Increases fiber digestion
- Helps reduce grain passage in manure
- Increases total rumen bacteria
- Helps improve immune system
- Appetite stimulant
- Helps to lower SCC
- Helps increase milk fat
- Helps reduce incidence of abortions and stillbirths
- Helps reduce incidence of ketosis



Best times to feed Dairy Stress Pak:

- Early lactation
- Anytime feed intake is low
- When poor forage is being fed
- Any Stress period like freshening, breeding, or heat stress



6 S Vintage Rd., Paradise, PA 17562
(717) 442-4183 800-635-3592

GARDEN TRACTOR PULL



STEVENS FIRE CO.

91 Stevens Rd.

Sat., July 19

Pull starts at 3 p.m.

Kitchen opens at 1 p.m.

Admission:

14 and up - \$2.00 per person
13 and under - free

Chad Weaver, 717/336-0432
Fred Cuthbert, 717/336-8220