

FARM EQUIPMENT



\$51,200
1998 John Deere 7810, 2,200 hrs, 3 remotes, exc. condition 717/465-0367

TRACTORS

- MF 2805 runs nice 20 8x38 tires 190 hp needs work
- MF 670 4WD cab w/238 quick tach ldr 60 hp
- MF 383 8 spd wet brakes 65 hp w/roll bar
- MF 290 w/18 4x30 tires w/ind PTO & dual aux
- MF 245 dsl narrow vineyard 4 6" W
- MF 165 dsl tractor good rubber runs nice
- MF 40B dsl 52 hp w/loader nice
- MF 231 dsl 1990 model w/6 Bush Hog finish mwr 2000 hrs
- MF 150 gas rebuilt eng new tires & new paint

LOADER

- MF 832 quick tach loader

EQUIPMENT

- 3 pt 5 & 6 ft Bush Hog mowers
- 2 packer pups
- MF 880 5x16 toggle trip semi mount plow
- MF 2 & 3 bottom plows
- MF No 31 & 41 3pt sickle bar mower 6 & 7 ft
- Brillion & JD cultipackers 8-10 12 14 & 16 ft & diff sizes
- New farm gates & hay feeders



Large selection of used MF Tractor Parts
20 30 35 40 50 65 85 90 135 150 165 175 178 180 265, 270 283 285 290 298 383 390T 399 1080 1085, 1100, 1130 1105 1135, 1150, 1155 2675 2705 2745 2775, 2805, 3090 3545 3660 3680 4235 4WD 8160 MH Pony 22 30. 44 101 Jr Balers 3 12 & 124 MF 50 HX 4WD

MF Compacts For Parts
205 220, 1020, 1030, 1035

We Stock New MF Water Pumps Power Steering Pumps Hyd Pumps Clutches, Spindles Rebuilt Starters Seats Filters & Many Other New Items

Recent Arrivals For Parts

- MF (2) 6180, 22, 2705 65 20 44 1135, (2) 1085s (2) 285s 6180, 9N 698, 135 30, 165, 3650 3545 220 135

Used Brillion & JD Cultipacker & Cultimulcher parts

NOLT'S EQUIPMENT

403 Centerville Rd Newville PA 17241
off 51 exit 37 2 mi S N on 233

(717) 776-6242 No Sunday Calls

No Out-Of-State Personal Checks We Ship UPS



JD 945 Discbine
w/impeller Hydro Swing, Swivel Hitch, Very Nice
SOLD
\$12,900

TRACTORS AND SKID LOADERS

- Case 1840, Skid Loader, 2700 hrs \$8,500
- Scat Trak 1700C, Skid Loader, 80 hp, 4700 hrs, Runs Good **SOLD** \$6,900

HAY AND FORAGE

- Fiat NH 1431, Hydro-Swing Discbine, 13 ft \$9,800
- FNH 144, Inverter \$2,500
- NH 848 Round Baler, Nice \$3,900
- Besco 12 Wheel Rake, Hyd Fold \$1,800
- Gehl 1475 TDC Round Baler, High Moisture 4x5, Baled 1200 Bales, Very Nice \$7,900
- JD 920 Discbine, Very Nice \$7,800
- JD 716A 16 Ft Forage Wagon \$2,900
- JD 2RN Cornhead Grn, Row Trak \$2,500
- JD 7 Ft. Pick-up Head, New Teeth \$1,800
- JD 3RN Corn Head Late Style \$1,650
- CIH 3RN Corn Head for 8750 Chop \$1,250
- FNH 790 Chopper, Metal Alert, Very Nice \$5,000
- (2) (1) FNH 900 Chopper Metal Alert II \$4,250
- (2) FNH 824 2 RN Corn Head, Low Wear \$2,200
- FNH 790 Pick-up head \$1,400
- Pequea HR 10, Rotary Rake New \$4,200
- Hesston 530 Round Baler, Manual Tie, Ex Cond \$4,900
- Hesston 560 Rd Baler, 5x6, Low Wear \$4,500
- NI 484 Round Baler, Elec Tie \$3,900

TILLAGE

- CIH 3800 Rock Flex Disc, 12 Ft, Like New \$5,500
- IH 5 Tooth V Ripper w/Depth Wheel, Nice \$2,950
- Brillion 3 Pt 7 Tooth Chisel \$750
- AC 12 Ft. Field Cult \$950

MISC.

- Great Plains 12 Ft NT Drill, Grass Seed Box \$8,900
- NI 363 Spreader 320 Bu, Top Beater w/Tailgate \$3,500
- NH 355 Grinder Mixer, Hydr Drive, Scales \$2,500
- IH 550 Spreader, Top Beater, w/Tailgate \$2,500
- Lostness 8' 3 pt Snowblower \$1,500
- Wind Power 12 KW TO Generator on Cart \$1,250
- FMC 14 Ft. Stalk Shredder \$850
- Gehl 120 Grinder Mixer Hyd Drive \$2,400
- Gehl 100 Grinder Mixer, hydr drive \$2,200
- Gehl 120 Grinder Mixer Gear Drive \$1,500
- Gehl 1580 Vortex, 1000 RPM, Blower \$1,600
- Steel Tracks For Skid Loader \$750

James Burkholder
185 Willis Rd.,
Newville Pa 17241
717-776-4261

Take Quick Delivery of a Bean or Corn Planter

BINKLEY & HURST BROS. INC.

THE PLANTER PLACE

Your KINZE Konnection

New & Used Planters, Attachments & Accessories, Wide Variety of Options & Prices

ALL IN STOCK NOW AT BINKLEY & HURST BROS. INC. - LITITZ, PA

Soybeans Or Corn We Are Ready To Deliver!



Seed Meters

The Most Accurate And Dependable Seed Metering Systems In The Field! For Corn.

- *Highly accurate The KINZE Finger Pickup Metering System delivers unequalled spacing for your valuable corn crop*
- *Reliable Convenient No plates or seed discs to change when planting different seed corn sizes or shapes. And you have none of the adjustments required with air or vacuum systems!*
- *Economical Gives years of low cost low-maintenance service*



Corn

Make every seed count!

Precision Metering For Soybeans, Milo & Cotton.

This is the patented mechanical brush type seed meter that precisely singulates every soybean, milo/grain sorghum and acid delinted cotton seed with pinpoint accuracy. Gentler on the seed than anything you've ever used before. Easy to maintain just one moving part. Best of all it fits most plateless planters in the field today!

Beans



Seed discs available for soybean, milo/grain sorghum and acid delinted cotton. We'll help you choose the one that fits your operation.
"KINZE" Brush Type Seed Meters fit all KINZE Plateless™ Planters. See your KINZE Dealer for additional information. Discover the simplicity and accuracy of the KINZE™ Brush-Type Seed Meter System today!

THE MOST COMPLETE PLANTER LINEUP IN THE BUSINESS!

MODEL 3000

4 Row & 6 Row Units

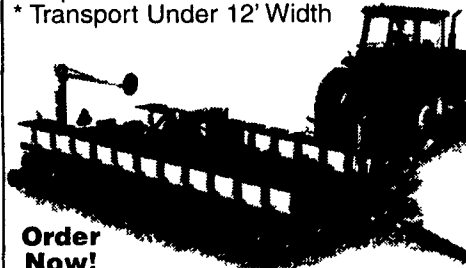
- * 30" or 36"/38" Capable
- Liq or Dry Fert (or Both!)
- * Interplant Units

MODEL 3400

Ask About 4.9% Financing on this Unit

8 Row 20" or 22"

- * Interplant 10"-11"
- * Liq. Fert.
- * Transport Under 12' Width



Order Now!

MODEL 3600

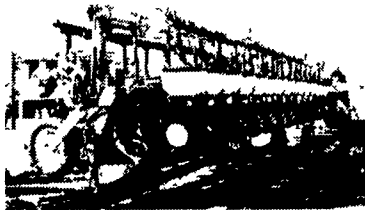
- 12X30"**
- * Liq. Fert. Or Dry
- * UNDER 12' TRANSPORT
- * Interplant



John Deere 4 Rowx30" Spacing Planter with Liquid Fert.

Nice!
UM5263

Corn OR Beans Pre-Owned Kinze 3600 Twin-Line Swing Frame Narrow Transport Planter

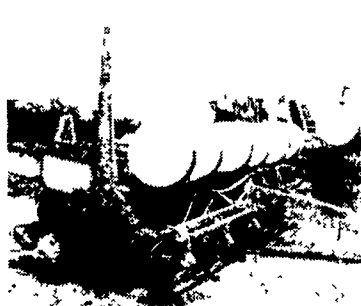


Plant 16 Row Corn at 30" Spacing
OR 31 Rows of Beans at 15" Spacing

Liquid Fertilizer, Double Frame Interplant with Front & Rear Cross Fill Seed Hoppers To Eliminate Manual Seed Fill and Save Your Back!
Keeton Firmers, UM5244

Read To Plant! Check Our Financing Options

John Deere 7000 Conservation 6 Row Planter

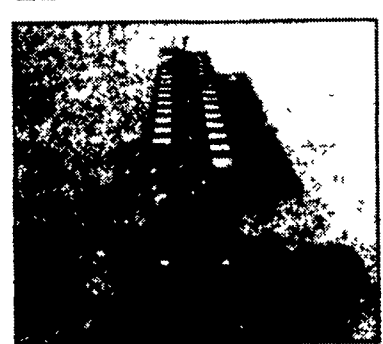
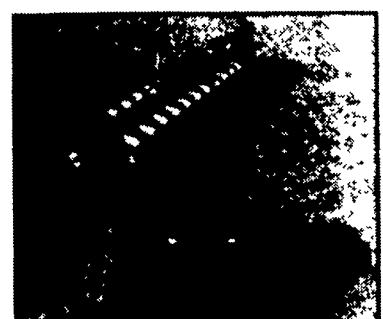
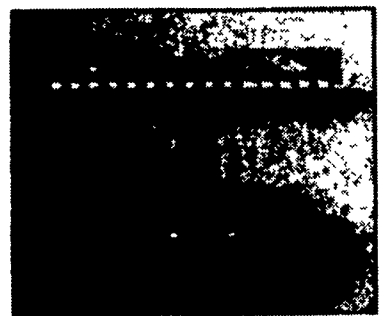
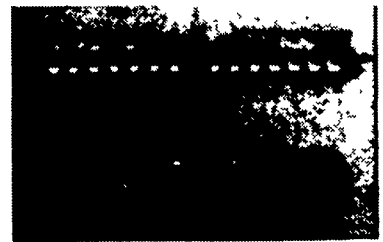


With Liquid Fertilizer & Double Disc Openers, Monitor & Markers,
UM5067

Blow out Special \$3,750

The Turn Line Advantage Comes From Binkley & Hurst

Unfold/Fold From Your Tractor Seat!



KINZE EXPECT MORE!

BEFORE YOU "BURY" YOUR PLANTER IN COLD STORAGE 'TILL NEXT SEASON CONSIDER THIS!

Now Is A Great Time To UPTIME
While any issue concerning this years' planter function are fresh on your mind



Mr. Planter Owner
Binkley & Hurst Bros. Inc. is offering our annual off season inspection and evaluation of your planter for the purpose of identifying worn, broken or malfunctioning parts. Many times, seemingly insignificant wear will affect the accuracy of your planter more than you realize. If nothing else, it may be time to have your finger pickup meters checked on our test stand. Also new innovations, attachments, and options are constantly being introduced which may be of interest to you for installation on your planter.
Binkley & Hurst Bros. Inc. parts and service personnel are specifically trained and informed planter specialists, ready to examine your planter with you! If it is determined that the planting proficiency of your planter could be improved with our service, we would be happy to provide that service to you. At the time of inspection we will recommend to you any items needing attention. Also at that time we will remove your meters to return to the dealership for testing, if you so desire. The cost for meter service is \$24.95. This includes testing, cleaning and repair labor (parts not included).
If you set an appointment for planter evaluation you will be charged a flat fee 4 or 6 row planter 8 row planter, 12 or 16 row planter. Call for flat fee pricing. (Customers over 50 miles radius of Lititz subject to mileage charge).
If no evaluation is requested we can simply perform the service without charging an evaluation fee. A Technician will visit your farm with one of our well stocked service trucks to assist you in reconditioning your planter. We encourage you to be a part of the actual servicing so that any pointers or insight which the technician may have for you with regard to planter operation could be conveyed at that time. If you schedule an uptime before September 30, 2003 you will save 10% on KINZE and CASE IH parts and labor!

If you have any Questions, please contact the planter department at (717)626-4705 or (800)414-4705. Thank you, Kevin Smoker

BINKLEY & HURST BROS. INC.

133 Rothsville Station Rd.
P.O. Box 0395,
Lititz, PA 17543-0395
(717) 626-4705 1-800-414-4705

Fax 717-626-0996

