

Belleville Poultry

Belleville, Pa.

Report Supplied by Auction
Wednesday, July 2, 2003

GEESE: 5.00 EA.
TURKEYS: CHICKS 4.50.
GUINEAS: 1.50-3.00 EA.
CHICKENS: 2.50-3.00 EA.
ROOSTERS: 2.00-6.50 EA.
BANTAMS: 2.00-4.00 EA.
SILKIES: 3.00 EA.
MUSCOVY DRAKES: 6.50-7.00 EA.
MUSCOVY HENS: 4.00 EA.
DUCKS: 4.00 EA.
BARN BIRDS: 1.50-2.00 EA.
WHITE BIRDS: 2.00 EA.
FANCY BIRDS: 59.00.
PEACOCKS: 23.00-26.00.
PHEASANTS: 1.50 EA.
DOVES: 4.50-6.50 EA.
GUINEA PIGS: 2.50-3.75 EA.
RABBITS: RABBITS UNDER 4 LBS.
.50-12.00, 4-6 lbs. 4.00-6.00, over 6 lbs.
6.00-11.50, all per head.
PLEASE PREBOX SMALL ANI-
MALS.

Belleville Livestock Auction

Belleville, Pa.

July 2, 2003

Report Supplied By Auction

DAIRY COWS: 800.00-1400.00 PER
HEAD.
SHOATS: 21.00-50.00 PER HEAD.
BEEF COWS: 42.00-52.75 PER CWT.
BEEF BULLS: 50.50-57.75 PER CWT.
STEERS: 53.00-56.00 PER CWT.
LAMBS: 66.00-96.00 PER CWT.
FARM CALVES: 115.00-140.00 PER
CWT.
VEAL CALVES: 20.00-40.00 PER
CWT.
FEEDER CALVES: 66.00-77.00 PER
CWT.

Belleville Hay

Belleville, Pa.

Report Supplied By Auction

Wednesday, July 2, 2003

Hay—Straw—Grain

MIXED HAY: 85.00-150.00.

Wolgemuth Hay

Leola, Pa.

Report Supplied By Auction
July 2, 2003

Hay—Straw—Grain

28 LOTS.
ALFALFA: HIGH 150.00 and AVG.
118.00.
MIXED HAY: HIGH 185.00, AVG.
107.00.
TIMOTHY: NONE.
GRASS: HIGH 85.00 and AVG. 85.00.
STRAW: HIGH 147.00, AVG. 127.00.
CORN: HIGH AND AVG. 115.00.

Weaverland Produce Auction

New Holland, Pa.

Report Supplied by Auction
July 1, 2003

ASPARAGUS: 1.75-2.25 LB.
BEANS: GREEN 8.00-21.00, YEL-
LOW 6.00-21.00, BOTH ½ BU.
BROCCOLI: .45 HEAD.
CHERRIES: SWEET 17.00-30.00,
SOUR 17.00-26.00, BOTH 8 QT. FLAT.
CUCUMBERS: 5.00-16.00 ½ BU.
LETTUCE: ICEBURG 7.00-11.00 12
CT., 15.00 24 CT., ROMAINE
10.00-15.00 18 CT.
ONIONS: SPRING 10.00-21.00 20 CT.
BUNCH; SPANISH 6.00-9.00 8 CT.
BOX. RED ONION 8.00-11.00 BOX.
PEAS: SUGAR 13.00-21.00, SNAP
9.00-11.00, BOTH 10 LBS., HULL
8.00-21.00 ½ BU.
POTATOES: RED 7.00-15.00 ½ BU.
AND WHITE 9.00-12.00 ½ BU.
PEPPERS: GREEN 20.00 ½ BU.
PICKLES: 8.00-10.00 ½ BU.
RASPBERRIES: RED 45.00-52.00 12
PT. FLAT, BLACK 19.00-60.00 12 PT.
FLAT.
RED BEETS: 5.00-12.00 BU. BOX.
STRAWBERRIES: 10.00-29.00 8 QT.
FLAT.
TOMATOES: 45.00-79.00 25 25 LB.
BOX.
ZUCCHINI: GREEN 1.00-15.00, YEL-
LOW 6.00-18.00 BOTH ½ BU.
FLOWERS: PERENNIALS .50-5.00
POT. HANGING BASKETS 2.00-15.00.
SALE DAYS MON., TUES., THURS.,
FRI., 9 A.M.

New Holland Dairy Sale

New Holland Sales Stables
Report Supplied by Auction
Wednesday, JULY 2, 2003

135 DAIRY COWS, 102 HEIFERS, 14
BULLS. MARKET STEADY.
LOCAL FRESH COWS
600.00-1575.00, 1 AT 1700.00.
LOCAL SPRINGERS 635.00-1410.00.
BETTER FRESH COWS
1575.00-1700.00.
LARGE HEIFERS 1385.00-1485.00.
SHORT BRED HEIFERS
410.00-1300.00.
OPEN BREDDING AGE HEIFERS
925.00-1110.00.
BULLS 450.00-860.00, PUREBREDS
510.00-800.00.
UPSTATE LOADS FRESH
1350.00-1675.00.
FRESH HEIFERS 500.00-1475.00.
REGISTERED HEIFERS
875.00-1710.00.
SMALL HEIFERS 800.00-1200.00.
SMALL OPEN HEIFERS
710.00-875.00.
SMALLER OPEN HEIFERS
425.00-600.00.
HERDS ALL STAGES 360.00-1375.00.

Ag Security Bill Passes House

HARRISBURG (Dauphin Co.)
— Former House Agriculture and
Rural Affairs Committee Chair-
man Rep. Raymond Bunt's bill to
reduce the minimum amount of
land needed to be eligible for pres-
ervation was unanimously approved
by the House.

"Our farmland is rapidly disap-
pearing, turning the Common-
wealth's rich soil into over-devel-
oped fields of housing, shopping
malls, and high-rises," Bunt said.
"We are slowly building over our
future."

The bill amends the Agricultural
Area Security Law by allowing
counties the option of making 25
acres the minimum amount of land
eligible for preservation. This op-
tion provides the opportunity for
more farmland to be preserved,
since the current regulation re-
quires a minimum of 50 acres, un-
less the parcel is contiguous to al-
ready preserved land.

"We must preserve our valuable
farmland to help sustain agricul-
ture and farming practices," Bunt
said. "By the General Assembly
passing this bill into law, we help
ensure the future livelihood of our
farmers and agribusiness."

House Bill 671 now goes to the
Senate for consideration.

2002 Poultry Production In State Down 14 Percent

HARRISBURG (Dauphin Co.)
— The combined value of Pennsyl-
vania poultry production in 2002
was \$596.8 million, down 14 per-
cent from the \$690.0 million in
2001, according to the Pennsylva-
nia Agricultural Statistics Service.

Egg production accounted for
46.7 percent of the total value,
broiler production was 37.8 per-
cent of the total, turkey production ac-
counted for 15.2 percent, and the
value of mature chickens sold (ex-
cluding broilers) accounted for less
than 1 percent of the total value.

Total egg production for 2002
was valued at \$279.3 million, down
8 percent from \$303.7 million one
year earlier. During the year 6.52
billion eggs were produced, 2 per-
cent less than in 2001. Prices for all
eggs sold, including hatching eggs,
averaged 51.4 cents per dozen dur-
ing the year, compared to 54.7
cents per dozen in 2001.

Broiler production during 2002
was valued at \$225.9 million, down

21 percent from the previous year.
A total of 133.2 million broilers
were produced in 2002, up slightly
from 2001. The average price re-
ceived by producers in 2002 was
32.0 cents per pound live weight,
compared to 41.0 cents per pound
received a year earlier.

Turkey producers raised 9.9 mil-
lion poulters during 2002, up 4 per-
cent from the previous year. The
value of turkey production in 2002,
at \$91.1 million, was 7 percent less
than in 2001. Producers received an
average of 39 cents per pound live
weight during the year, down 7
cents per pound from 2001.

Mature chickens sold (excluding
broilers) in 2002 were valued at
\$529,000, 2 percent less than the
previous year. A total of 14.7 mil-
lion mature chickens were sold
during the year, 2 percent less than
in 2001. Prices for mature chickens
averaged 1.0 cent per pound live
weight, same as the previous year.

Foregoing Field Tests Could Spell SCN Troubles

COLUMBUS, Ohio — Soybean
growers who failed to sample their
fields last fall for soybean cyst ne-
matode (SCN) may be in for a sur-
prise this growing season.

Mae Riedel, an Ohio State Uni-
versity plant pathologist, said that
snow cover and relatively mild
winter temperatures may have
aided in SCN survival resulting in
high pest populations this spring.
Those populations could spell trou-
ble, especially for growers who
rushed to plant early and may not
have tested their fields for egg
counts beforehand.

Soybean cyst nematodes feed on
the roots of young plants, which
prevents the roots from taking up
vital nutrients. The result is a drop
in yields and economic losses. The
best management tool to control
SCN populations is to sample
fields with a history of problems
and rotate resistant varieties based
on relative egg counts.

Yield loss threshold of SCN be-
gins at 200 eggs per cup of soil. At
2,000 eggs per cup of soil, most sus-

ceptible soybean varieties suffer
significant economic losses. At
5,000 eggs per cup of soil, growers
should avoid growing soybean vari-
eties altogether, even resistant vari-
eties.

"With susceptible varieties,
when there is stress on the crop or
poor nutrition, you can detect eco-
nomic losses under 1,000 eggs per
cup of soil. So at the 10,000 range,
susceptible beans are producing
very little yield and resistant beans
will probably have root damage
and won't yield optimally," said
Riedel.

One thing that is going for grow-
ers so far that may help keep SCN
populations in check is recent rains
and cool soil temperatures.

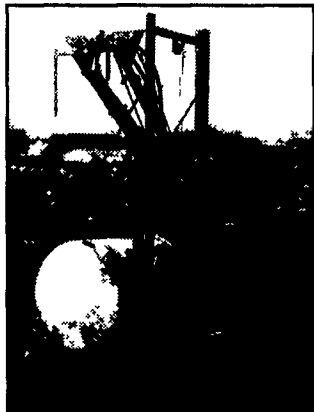
"Soybean cyst nematodes don't
develop too well in wet soils, and
low temperatures, below 65 degrees
Fahrenheit, tend to suspend nema-
tode activity," said Riedel. "Such
conditions may allow early-planted
soybeans to develop roots and start
growing before SCN has a chance
to pile on."



High Pressure Produce Sprayers Trailer or 3 Pt. Hitch Models



Zimmerman's manufactures several different model sprayers designed for produce spraying. They are built for the small farmer that cannot justify a large expensive sprayer. Trailer models are available with a 200 or 300 gallon tank and 3pt hitch models with a 110, 150, 200 or 300 gallon tank. The 25' single sided boom has 7' plus clearance and requires a minimal amount of drive rows because of the wide span. It also has a hydraulic cylinder that allows the operator to level the boom from the tractor seat. A Hypo high pressure diaphragm provides up to 290 p.s.i. and non-drip nozzle bodies keep chemical loss minimal. Stop or call Zimmerman's today to see how we can help you with your spraying needs and improve your profit margin.

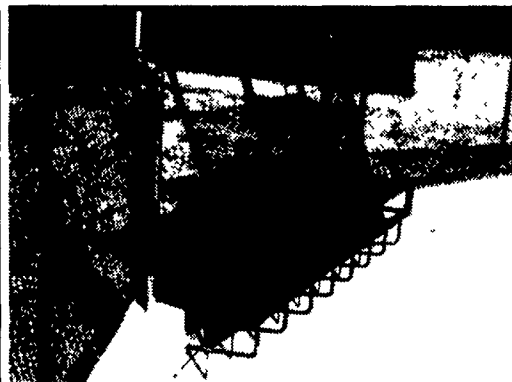


Paul B. Zimmerman Inc. • 50 Woodcorner Rd. • Lititz, PA 17543 • (717) 738-7350



Manure Push Off Guard

Providing Safety For Tractors and Cattle



- Available in both 8' and 10' lengths, the gate is controlled with a single spring loaded lever centrally located 54" off the ground
- Positive locking with 1" bolts on both sides protects humans, animals, and equipment from life threatening mishaps
- 1 1/4" steel rods cast into the concrete allow manure to fall easily into the pit, but keep everything else safely where it belongs

SUPER TOUGH FINISH!

- Protects from rust
- Chip resistant
- Resists acids & chemicals
- Smoother finish stays cleaner

ADDED VALUE WITH OUR 2 COAT PROCESS!

- 1 Five step metal preparation, including iron phosphate conversion coating, to enhance adhesion and prevent undercoat corrosion
- 2 Zinc rich epoxy powder undercoat
- 3 TGIC polyester powder top coat, baked at 400° to fuse coats, forming a cross link molecular bond



Paul B. Zimmerman, Inc.

295 Woodcorner Rd. • Lititz, PA 17543 • 717/738-7365
1 mile West of Ephrata

Call or write for additional information & the name of your nearest dealer

Hours Mon -Fri 7-5 Sat 7-11

GATES - FENCING STALLS