

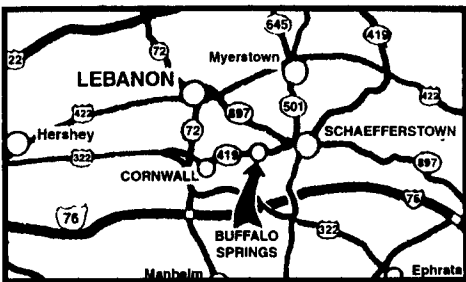
# www.kbford.com

Your Internet Connection

SPECIALIZING IN NEW & USED SUPER DUTY PICKUPS

## KELLER BROS.

(Buffalo Springs) Lebanon, PA  
**717-949-2000 or 1-800-363-2767**  
**LEBANON COUNTY'S HEAVY DUTY TRUCK HQTRS.**



**FAMILY OWNED AND OPERATED FOR OVER 80 YEARS**

Over 100 Clean Pre-Owned Vehicles In Stock At All Times!!

**2001 FORD F150 SUPERCAB XLT**  
 4x4, Off Road Pkg., 5.4 V8, AT, A/C, PW, PL  
**\$23,335**



**2001 FORD SPORT TRAC 4x4**  
 4.0L AT, A/C, PW, PL, Alloy Wheels, Sharp  
**Only \$20,773**



**2003 FORD E550 CUT AWAY CHASSIS**  
 7.3L Power Stroke Diesel AT, A/C, PW, P Seats, Chrome Wheels, MSRP \$37,165  
**NOW \$29,665**  
 Save \$7,500



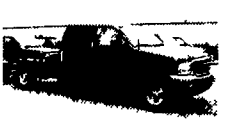
**2001 FORD RANGER SUPER CAB EDGE**  
 V6, AT, A/C, 4x4, CD Player, 33,000 Miles, Very Clean  
**\$14,929**



**2000 FORD F650 BOX TRUCK**  
 Cat Diesel, AT, 24 Ft. Box, Hyd. Lift, 26,000 GVW, Air Brakes, Only 9,000 Miles  
**REDUCED \$31,921**



**2003 FORD F350 CREW CAB**  
 V10, AT, Full Power, 4x4 Cab & Chassis Only.  
**"SAVE THOUSANDS"**



**2001 FORD F350 XL Dump Truck**  
 5.4 V8, 5-Spd., AM/FM/Stereo Only 7,000 Miles Ready to Work  
**\$25,900**



**1995 DODGE RAM 1500**  
 Reg. Cab, 4x4, SLT, V8, AT, PW, PL  
**\$8,808**



**2001 FORD ESCAPE**  
 XLS, 4x4, 5-Spd., A/C, PW, PL, CD  
**Only \$14,595**



**2003 FORD EXPLORER XLT 4x4**  
 4.0L SOHC V6, PW, PL, CT, Dual A/C, 3rd Seat  
**\$25,995**



**1987 FORD E150 CLUBWAGON**  
 7 Pass., 8 Cyl., AT, A/C  
**\$4,595**



**2001 FORD F150 SUPER CAB LARIAT**  
 4x4, 5.4 V8, AT, A/C, PW, PL, Leather, 21,000 Miles, Fiberglass Cap  
**Only \$25,773**



**1998 FORD EXPEDITION 4x4 EDDIE BAUER**  
 V8, A/C, Full Power  
**\$15,795**



**2001 FORD F250 CREW CAB 4x4**  
 7.3 Diesel, XLT, AT, A/C, PW, PL  
**\$31,995**



**2000 FORD F250 SUPERCAB, 4x4, XLT**  
 7.3 Diesel, 6-Spd., A/C  
**\$20,550**



**1997 FORD F150 SUPERCAB 4x4 LARIAT FLAIRESS**  
 5.4 V8, AT, A/C, PW, PL  
**\$16,595**



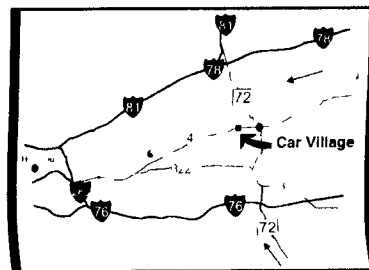
Nicest Trucks In the East • Nicest Trucks In the East • Nicest Trucks In the East • Nicest Trucks In the East • Nicest Trucks In the East • Nicest Trucks In the East

www.useddieseltruck.com

2300 W. CUMBERLAND ST. (Rt. 422)  
 LEBANON, PA 17042  
 (Across From Lebanon Valley Mall)

# CAR VILLAGE

1-800-650-1420  
 717-274-2000



**4x4 SUPER CAB SHORTBED**  
 99 FORD F250  
 Powerstroke Turbo Diesel, 6 Sp., A/C, Vinyl Seat & Floor \$22,900



**\$5,900**  
 99 FORD F250 4x4  
 V8 Auto, Tool Boxes, Runs Well



**\$12,900**  
 99 CHEVY 2500 SUPER CAB 4x4  
 6.0 Litre V8, Auto, A/C, All Power Equip., 8 Foot Bed, Alloy Wheels



**ONLY 18,000 MILES**  
 2001 FORD F250 SUPERCAB 4x4  
 Almost New Loaded XLT, 5.4 Triton V8, Auto, A/C, Loaded XLT, Comfortable 40/20/40 Seat, Limited Slip Axle  
 Remainder New Warranty



**\$10,900**  
 97 DODGE 2500 4x4  
 Lots of Truck for a Little Money, Heavy Duty 3/4 Ton, 360 V8, Auto, A/C  
 Tow Pkg, Alloy Wheels



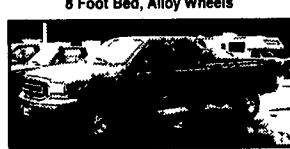
**F350 CREWCAB**  
 99 FORD F350 XLT  
 Powerstroke Turbo Diesel Auto A/C  
 Tow Pkg Loaded XLT 62,000 Miles



**CUMMINS DIESEL**  
 98 DODGE 2500 QUAD CAB 4x4  
 24 Valve Cummins Turbo Diesel, Auto, A/C, Laramie SLT Pkg., 46,000 Miles



**5SP CUMMINS**  
 2001 DODGE 2500 QUAD CAB 4x4  
 Very Nice Only 30,000 Miles, Remainder New Tk Warranty, 24 Valve Cummins, Loaded Laramie SLT, Alloy Wheels, Tow Pkg



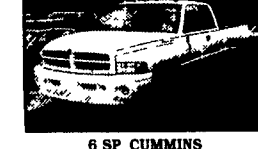
**2000 FORD 350 SUPER CAB 4x4**  
 Power Stroke Turbo Diesel, Auto, A/C, Tow Pkg Very Clean Sharp  
**\$27,900**



**2000 DODGE 2500 QUAD CAB 4x4**  
 Local 1 Owner Trade, 360 V8, Auto, A/C, Loaded, Laramie SLT, Asking \$18,900



**GORGEOUS**  
 99 FORD F350 SUPER CAB DUALY 4x4  
 A Must See, Only 29,000 Miles, Powerstroke Turbo Diesel Auto, A/C, Tow Pkg., Heavy 11,200 GVW, Alloy Wheels



**6 SP CUMMINS**  
 2001 DODGE 3500 QUAD CAB DUALY 4x4  
 Very Strong 24 Valve Cummins loaded with Options, Tow Pkg



**\$23,900**  
 99 FORD F250 SUPER CAB 4x4  
 Short Bed, Nice To Drive, Loaded XLT, Powerstroke Turbo Diesel, Auto, A/C, Tow Pkg, Alloy Wheels, New Service & Insp



**1 TON PICKUP**  
 99 FORD F350 4x4  
 Hard Find Powerstroke Turbo Diesel, Auto, A/C, Capt Chairs, Console, Limited Slip Axle, Alloy Wheels, Tow Pkg



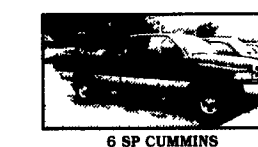
**4x4 CREW CAB DUALY**  
 2002 FORD F350  
 Loaded XLT, PowerStroke Turbo Diesel, Auto, A/C, Comfortable 40/20/40 Seat, Alloy Wheels, Fact Tow Pkg  
 Only 7,700 Miles



**SHORTBED SUPER CAB**  
 2001 CHEVY 2500 4x4  
 Nice Driver, Very Clean Duramax Diesel Allison Auto, Loaded, All Options Alloy Wheels, Tow Pkg., Limited Slip Axle



**4 DOOR SHORTBED**  
 2000 FORD F350 XLT  
 Nice To Look At & Very Nice To Drive, Powerstroke Turbo Diesel, Auto, A/C, Loaded XLT, Alloy Wheels, Tow Pkg



**6 SP CUMMINS**  
 2002 DODGE 2500 QUAD CAB 4x4  
 Very Strong Truck, Loaded, Laramie SLT, A/C Overhead compass  
 Remaining Fact Warranty

## FLATBEDS, WORK & DUMP TRUCKS



**STAKE BODY**  
 99 FORD F350  
 Very Clean, Only 48,000 Miles, 5.4 Triton V8, 5 Spd., A/C, New Service 7 Insp Ready to Work  
**\$18,900**



**4 DOOR MECHANIC'S TRUCK**  
 2000 FORD F350 4x4  
 Just What Your Business Needs Only 48,000 Miles Powerstroke Diesel, AT, 8 Ft Body with Flip Open Lids



**17 FOOT CUBE VAN**  
 97 FORD E-450 SUPER DUTY  
 Heavy 14,000 GVW, Rear Lift Gate, Powerstroke Turbo Diesel, Auto, AC, Local Trade, Only 68,000 Actual Miles



**ALUMINUM ROLLBACK**  
 2000 FORD 550 SUPER DUTY  
 18 Foot Body, Powerstroke Turbo Diesel GSP, Loaded XLT, Heavy 19,000 GVW, Keyless Entry, Tool Boxes, Wheel Lift, Remaining New Tk Warranty



**4x4 L-PAK DUMP TRUCK**  
 2002 FORD 550  
 Rare Find PowerStroke Diesel, Auto, A/C, L-Pak, Tool Box, Tow Pkg., Only 21,000 Miles



**CAB OVER DUMP**  
 98 CHEVY W-4  
 Only 45,000 Miles, Diesel Power, 5 Sp Manual, 12 Foot Steel Bed, Only 45,000 Miles



**66,000 ACTUAL MILES**  
 98 DODGE DUMP TK  
 360 V8 Auto, 2-3 Yard Dump Body, Runs & Drives Very Nice  
**\$7,900**



**DIESEL CARGO VAN**  
 2001 FORD E350 SUPER CARGO VAN  
 Very Clean Inside & Out, Powerstroke, Auto, A/C, Heavy 9,400 GVW Only 40,000 Miles, Remaining New Tk Warranty



**4x4 FLAT BED**  
 2000 CHEVY K3500  
 Very Nice Only 30,000 Miles High Output 6.5 Turbo Diesel, Auto, A/C, Fact Snow Plow Prep



**4x4 DUMP BODY**  
 95 FORD F350  
 Runs & Works Great PowerStroke Turbo Diesel, Auto, Tow Pkg  
**\$16,900**



**SUPER CAB DUMP**  
 2000 FORD F350  
 A Very Desirable Truck, Clean, Only 65,000 Miles V10 Auto, A/C, 9 Ft Body Insp & Services  
**\$21,900**



**550 CHASSIS 4 WHEEL DRIVE**  
 Long 201 WB, Powerstroke Turbo Diesel, Auto, A/C, Loaded XLT, Like New, Remaining New Tk Warranty  
 Only 9,000 Miles



**350 4 DOOR CHASSIS, 4 WHEEL DRIVE, 2001 FORD XLT**  
 Waiting for your Body, Only 19,000 Miles Powerstroke Auto A/C, Heavy, 11,500 GVW, Dual Ram Wheels



**4x4 CHASSIS**  
 2001 DODGE 3500  
 Short Wheel Base 60", C/A, 24 Valve Cummins Turbo Diesel, Auto, A/C, Limited Slip 4.10 Axle



**2003 FORD 750 CHASSIS**  
 Only 11,000 Miles, 33,000 GVW, Diesel Power, 7 Sp Trans, A/C, 2 Fuel Tanks, Brand New Dealer Cost \$38,800 Our Price \$35,900

Nicest Trucks In the East • Nicest Trucks In the East • Nicest Trucks In the East • Nicest Trucks In the East • Nicest Trucks In the East • Nicest Trucks In the East

Nicest Trucks In the East • Nicest Trucks In the East • Nicest Trucks In the East • Nicest Trucks In the East • Nicest Trucks In the East • Nicest Trucks In the East

Nicest Trucks In the East • Nicest Trucks In the East • Nicest Trucks In the East • Nicest Trucks In the East • Nicest Trucks In the East • Nicest Trucks In the East