

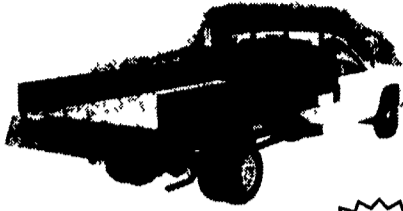
F.M.I.

Your Full Line For
Scott

FEEDMOBILE, INC.

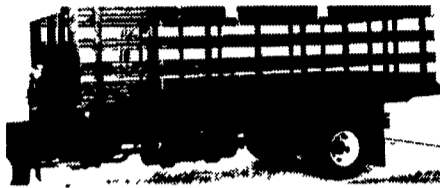
717-626-2680 Lititz, PA

TRUCK BODIES & HOISTS



- Used Truck Flat Bed, 24' w/Winch Straps . . . \$700
- Truck Lift Axle. . . \$1,000

PULL TARP AVAILABLE

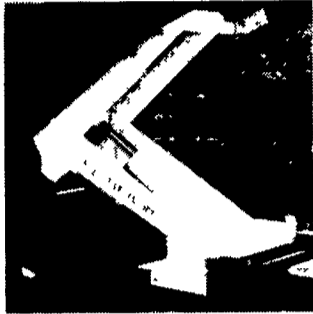


STAKE BODIES

- Steel Painted Racks
- Aluminum Racks
- Polyboard Racks

CONTRACTOR BODIES

Series 12
14' Steel Sides,
8' to 18' Lengths



DROP HINGE HOISTS

Class B - 9' to 12'
Class D - 12' to 16'
Class E - 12' to 16'
Class F - 12' to 18'



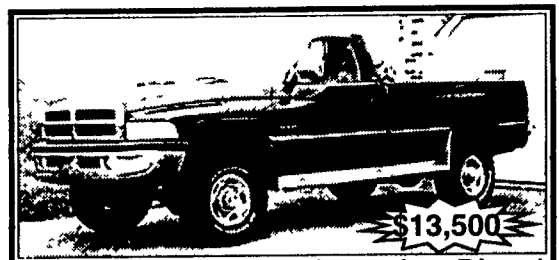
1989 International Model S 1954 3000 gal alum tanker DT466 eng. (210hp) 6sp trans Full air brakes P/S 33,000 lb GVW 11R22.5 tires on budd wheels The alum tech weld tank has 1 compartment This vehicle is in very good condition **\$6,500.**

856-456-4030 215-925-0322



1998 Ford Louisville Truck 30K Miles, 33K GVW, Single Axle, Diesel, Cummins 300 HP Engine, Manual - Fuller 9 Speed, Air Brakes, Tire Size - Front 11R22.5 - Back 11R22.5 (Tread 75% on each), Aluminum Wheels, DOT Inspection, 14' Steel Bed 1990 Knuckle Boom (located behind cab), Hiab Model 140, Has Pump, 13,230 Ton at 6'7"

Asking \$48,000 OBO
610/689-8936



1995 Green Dodge Cummins Diesel Turbo 4x4, 5 Spd., 4:10 rear; Gooseneck hook up, brake controller, AC, CD AM/FM, 111,000 miles, very good truck, runs and drives perfect, strong clutch engine

717/821-0517



1997 F-350
Auto., 127,000 Miles
\$8,000

570-683-5411

BRUBAKER'S AUTO SALES

PH. 717-866-5237

Hours: Mon.-Fri. 8 a.m.- 9 p.m.; Sat. 8 a.m. - 6 p.m.

ROUTE 422
MYERSTOWN, PA



99 CHEVY BLAZER LS 4 DR. 4x4, Brown, 4 3 V6, AT, AC, PW, PL, CC, Tilt, Pwr Seat, AM/FM/Cass./CD, Keyless Entry, 55,618 Mi **\$10,900**



98 CHEVY SUBURBAN 1500 LT 4x4 8-PASS., Black, 5.7 V8, AT, AM/FM/Cass, PW, PL, CC, Dual AC, Pwr. Seats, Heated Seats, Leather, CD, Keyless, 72,439 Mi. **\$15,900**



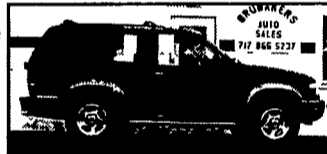
97 CHEVY S10 LS 2WD, Maroon, 2.2 4 Cyl, 5 Spd., AC, CC, Tilt, AM/FM/Cass/CD, 49,605 Mi **\$5,900**



97 FORD F-250 LARIAT 4x4 EXT. CAB, Black/Gray, 4 6 V8, AT, AM/FM/Cass, AC, PW, PL, CC, Tilt, Pwr Seat, Leather, Keyless Entry, 7,200 GVWR, 62,300 Mi **\$15,900**



01 FORD WINDSTAR LX, Black, 3 8 V6, AT, PW, PL, CC, Tilt, Dual AC, AM/FM/Cass./CD, Keyless Entry, 55,250 Mi **\$10,900**



00 FORD EXPLORER SPORT 4x4, Green, SOHC, V6, AT, AC, PW, PL, CC, Tilt, Pwr Seat, AM/FM/Cass./CD, Keyless Entry, 51,495 Mi **\$10,900**



00 GMC 2500 SIERRA 4x4 QUAD CAB, Pewter, 6 0 V8, AT, AC, PW, PL, CC, Tilt, AM/FM/CD, Keyless Entry, 8,600 GVWR, 76,080 Mi **\$16,900**



00 DODGE DURANGO R/T 4x4 7-PASS., Platinum 5 9 V8, AT, PW, PL, CC, Tilt, Dual AC, AM/FM/Cass/CD, Pwr Seat, Keyless, 55,265 Mi **\$16,900**

TRUCK TIRES

- Used Truck Tires
- Authorized Cooper Tire Dealer
- Good Supply of Retreads In Stock, Or We Can Custom Retread Your Own Tires To Meet Your Hauling Needs.
- Eliminate the Middleman and Buy Direct from our Retread Shop and Save \$\$!
- Our Family Business Has Been Retreading Tires for Over 35 Years

We Know How To Do It Right!



WEAVER'S TIRE SERVICE

Ephrata, PA
Drive On. **717/733-8775**

MACK SALES AND SERVICE OF HARRISBURG

4230 Industrial Road
Harrisburg, PA
W.W. ENGINE
717-238-6225
Fax 717-238-1901



\$4,225

1986 MACK MID-LINER Diesel 175 HP; 5 Spd.; Spring Susp., 26' Morgan Body w/Lift-Gate



\$43,500

2000 MACK CH613 DAYCAB E7-427 w/Jake; 10-Spd.; Air Ride, 186" W/B. 11R22.5 Virgin Rubber on Alum. Wheels; 400 K Miles



\$6,995 firm

1990 International/UD CABOVER Diesel 210 HP; Allison AT-545; 18' Van w/Lift-Gate, Former Penn State Truck; 34,000 Original Miles



Allatoona • Miesburg • Bedford • Dunok • Harrisburg • Kylesburg • Shenandoah • Somersville

178 MUDDY CREEK CHURCH ROAD
DENVER, PA 17517-9328
(717) 336-7528 • FAX (717) 336-4655

800-952-4228

www.mgsincorporated.com



TRAILERS

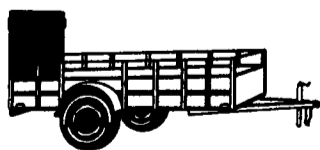


Dealer For

BigTex TRAILERS



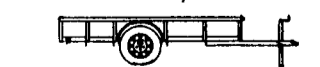
LARGE SELECTION
GREAT PRICES



UTILITY TRAILER



CAR HAULER TRAILER



UTILITY TRAILER



DUMP TRAILER

BIG TEX PRICES START AT:

- 4x8 = **\$625**
- 5x10 = **\$830**
- 5x12 = **\$1,025**
- 6 1/2x16 = **\$1,475**

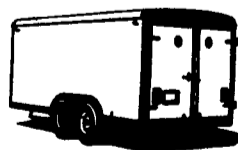
Trailer Sales
OPEN DAILY 8-5
SATURDAY 8-12

TRAILER - - PARTS
SERVICE, INSPECTION
HITCHES INSTALLED
BRAKE CONTROL INST.

DRAW-TITE HITCHES
In Stock

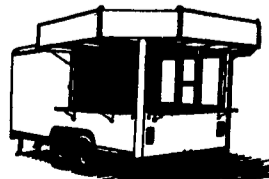
Dealer For

WELLS CARGO



WELLS CARGO
PRICES
START AT:

- 5x8 = **\$1,975**
- 6x10 = **\$2,727**
- 7x12 = **\$4,868**
- 8x16 = **\$5,379**



Big, Tex Trailers Also Available At
EAGLE RENTAL CENTER
Rt 272, Reamstown Traffic Light
• 717-336-3945