

35 TRUCKS AND TRAILERS

1981 GMC cattle truck, 17' Eby alum. body, \$1200 OBO. 610/987-6136

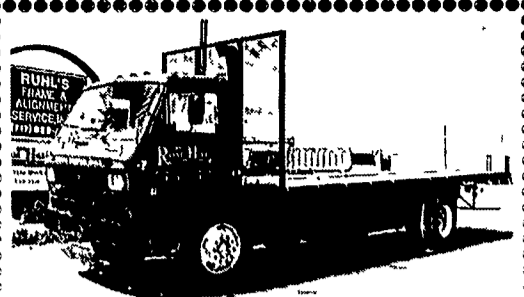
Log Truck, 1984 Ford, 400 Cummins, 13 spd/OD apprentice logloader, bypass grapple, full rotating boom, \$14,500. 717-261-1997.

'94 Kenworth tri axle dump truck, rebuilt 3406 Cat. 717-527-4396.

1980 Chevy Truck C70, 15' Dump Grain Bed, Gd Cond. 717-369-2198.

Flatbed 16ft w/ramps, 7000 GVW, 4 wheel elec brakes, \$2195 215-297-5687

1978 Chevy Grain Truck, 427, 5+2, 19' Dump Body w/ Roll Taip, 610-779-3284.

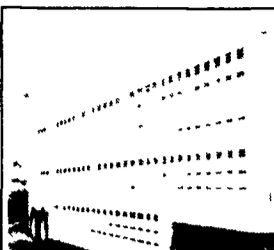


1988 Peterbilt,
6 Spd. 38 000 GVW w/24 Straight Body
Looks & Runs Good
\$7,595

1985 Mack RD686S
Mack 237 • Mack 5 Spd
311,643 Miles Camelback Susp
14 Steel Body **\$16,900**

Call Jerry Hillard
717-278-9590

Chevy Engines New & Reman
Tractor, Backhoe, Loader,
Engines Rebuilt
717-762-6415



1986 Eby
trailer, 45 ft.,
3 decks, very
good condition
for age
\$3,750



1985 S1900
model, 389,795
miles, DT466, 5
speed, 2 speed
rear, 21 ft. body,
218" WB,
30,000 GVW
\$3,000

717-442-4183
1-800-635-3592

KEYSTONE TARPS

SERVICE & SALES

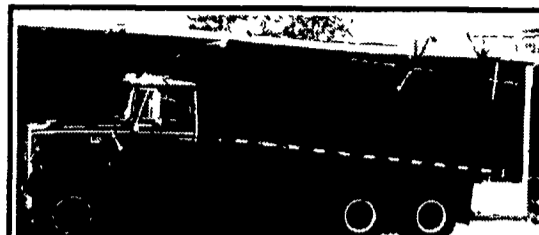
Is A Manufacturer Of Custom Tarps

- Systems
- Tarps
- Storage Covers
- Load Straps
- Gloves
- Used Railroad Ties




1-800-798-TARP
(8277)

FAX 570-435-0036 570-435-0752




1980 Ford 9000, 238 hp, 13 speed,
60,000 GVW w/18 ft steel dump,
hyd silage tailgate & grain chute.
Excellent Condition
\$15,250 610-276-2731


KENWORTH
KENWORTH OF PENNSYLVANIA
Used Trucks Sales - Carlisle - 800-692-7324
"WE BUY USED TRUCKS" (717) 766-8000



1997 -1/H 9400 51" Pro S1pr, 430
Detroit, 10-Spd, 3 73, Airride,
Super Clean
\$14,500




2003 Kenworth T800B,
475 Cat, 18 Speed, 3.90,
Locking Rear, 11R24 5 Alum.
Wheels, Air Ride,
Stk. #KP385484



Used Thermo Kings
Super II 30 MAX Factory
Reman Engine and Compressor,
2 yr warranty
\$9,500.

MD I 30 Running and Cooling
\$2,500

MD II 30 R134a 300 hrs
Running and Cooling
\$7,500



1996 KW T600B 72" Aerocab
Aerodyne, 455 Cat, 10-Spd.,
3 70, Airride
\$15,750

ALL STEEL REPLACEMENT TRUCK BED
8 1/2' Lx82"W
9'Lx8'W,
10'Lx8'W or 12'Lx8'W

Special!
5'x10' 2,000 lb. GVW
\$995 • \$950

Rotary Tillers
4ft \$1,250 5ft \$1,295 6ft \$1,395

Finish Mowers
5ft \$995 6ft \$1,095 9ft \$1,395

Rotary Mowers
4ft \$585 5ft \$595 6ft \$695

3pt Fertilizer Spreader \$329
Pull Type Fertilizer Spreader \$595

Pull Hay Tedders
9ft \$1,295 17ft \$2,695

19 Ft Hydraulic, Tilt Trailer,
10,000 lb GVW \$3,495

ATV Hauler, 3000 lb GVW,
7'x10' \$1,095 7'x12' \$1,195

Car Dollie \$795

Over 200 Trailers IN STOCK
Starting At \$495.00
T-Plates
DEALERS WANTED

UTILITY TRAILER
4'x8' Tilt \$495

LANDSCAPER
16'x77", 18'x77", 7,000# GVW

ALSO 84" WIDE!

CAR HAULER
16'x78" & 18'x78" includes 5' Beavertail
7,000 lb. GVW 4' self storing ramps

HIGHWAY HYDRAULIC DUMP BRI-MAR
FREE BATTERY

5'x8' 3,000# \$2,295 6'x10' 10,000# \$3,395
5'x8' 5,000# \$2,595 7'x12' 10,000# \$4,195
6'x10' 7,000# \$3,095

LOW PROFILE DUMP TRAILERS BRI-MAR
Other Sizes Available

6'x12' 10,000# \$4,395
6'x10' GVW
7,000# \$3,595
10,000# \$3,995
FREE BATTERY

GOOSENECK SIZES: w/4' Adj. Tail

20'x8' 12 or 15,000 GVW
24'x8' 15,000# GVW

Low Profile Construction
16'x77" & 18'x77"-10,000# GVW

DECK-OVER CONSTRUCTION
20'x8' w/Tail 10,000# GVW \$3,395
20'x8' w/Tail 12,000# GVW \$3,795

KUTZ FARM EQUIPMENT, INC.
Quality Trailers Built Locally By "PA International"
71 Kutz Road, Pine Grove, PA 570-345-4882 Fax 570-345-2884

www.kutzfarm.com
8 AM-5 PM Monday Thru Friday
8 AM-12 Saturday Or By Appointment

LEFEVER BROS.
CHEVROLET
CHEVY TRUCKS **Geo**

YOUR DIRECT LINE TO GENUINE GM PARTS

1-800-533-3837

When you call the number listed above, you'll reach our wholesale parts specialists, who can help you keep your GM repair work moving quickly

Ask about

- Specializing in GM Medium Duty Trucks, Current and Obsolete.
- \$500,000 Parts Inventory.
- Parts Locator for Those Hard to Find Items.
- We Ship Anywhere, Local Delivery Available.
- Experienced, Knowledgeable Personnel.

Mon Tues Thurs Fri
7 30 a.m - 4 30 p.m
Wed 7 30 a.m - 8 30 p.m
Major Credit Cards Accepted

717-432-9697
Quality Dealer Since 1921
406 U.S. Rt 15 Dillsburg PA 17019

GM Parts
THE FEELING IS GENUINE

C-SERIES

ROCK SPRINGS HARDWARE

Closed Utility Trailers
3,500# tandem axles 24" crossmembers on floor, 16" crossmembers on walls, 3/8" plywood walls, 3/4" plywood floors, From 5'x8' to 8 1/2'x32'. Many options to choose from
Starting At \$2,895

12' Skid Steer Trailer
GVWR 9 000lb, 6" Channel frame (2) 4000lb axles w/electric brakes breakaway kit 12 oak loading deck 78" between side rails, 60"x14 adjustable flip up ramps
Starting At \$1,995

Triple Crowns Dump Trailer
6'x10', 6'x12', 7000 lb GVW & 10,000 lb GVW Powder Coated
6'x12', 12,000 lb GVW, twin cylinders, 750x16 tires, 8 lug
Starting At \$4,695

18' Contractors Special
12 000 lb GVWR, 6" channel frame two 6,000lb axles eight lug 750x16 Tires, all wheel electric brakes with breakaway kit
Starting At \$2,895

24' Tandem Dual Pintle Pull
10" channel frame, (2) 10,000lb tandem dual oil bath axles, all wheel electric brakes with breakaway kit 2" treated wood floor (20' flat deck, 4 dovetail), stake pockets and rub rails
Starting At \$5,495

28' Tandem Dual Gooseneck
25,500 GVWR, height of deck 35", 10" I-beam frame, 10,000lb tandem dual oil bath axles, all wheel electric brakes with breakaway kit
Starting At \$5,995

20' Hauler Tag-Along Deckover
Trailer Weight 3000lb 10 000 12 000 or 14 000 lb GVWR avail Height of deck 35" 8" I beam frame, all wheel electric brakes w/breakaway kit, 2" treated wood floor 16 flat deck, 4 wood dovetail stake pockets and rub rail
Starting At \$3,295

24' Tandem Deckover Gooseneck
12,000 or 14,000 lb GVWR avail 8 I-beam frame, two 7 000 lb eight lug EZ Lube axles all wheel electric brakes with breakaway kit
Starting At \$3,795

16' Equipment Trailer
GVWR 9000lb 16' wood flat deck 83" wide, 5" channel frame and channel crosspieces, (2) 4,000lb axles with brakes on both, stake pockets
Starting At \$1,995

Now offer low monthly payment on every trailer
90 Days Same As Cash With Approved Credit

1320 Rock Springs, Rising Sun, MD
1/2 Mile South of Lancaster County on Rt. 222; Open: Mon.-Sat. 8-6; Closed Sundays
410-658-5978 • 1-800-858-0288