

32 MISCELLANEOUS

Wood heat. Clean, safe & efficient Central Boiler **OUTDOOR WOOD FURNACE.** Heats multiple buildings. Available in carbon steel & titanium enhanced stainless. Kenneth Stauffer, 570/539-4606, 888/539-4606

Shears, brakes, punch presses, rolls, iron workers, hand brakes, lathes, milling machines, welders, tin smith tools, tool cabinets, air compressors, pallet jacks. 717-733-7488, **NO Sunday Calls Please.**

(2)13' high jib cranes 500lb cap., new in skid. Bugo track torch, var. speeds & 8' track. 570/374-9982, 570/374-5535

32A ANTIQUES

Parks Joiner Planer, Tredle Lathe, both flat belt \$995/ea 610-495-7372.

JD 440 2 cyl gas industrial wheel tractor, loader, backhoe w/3pt, \$6,500. Oliver OC3, VG cond, \$3,500. 717-485-3181, 717-860-0234 cell.

Farmall A parts & wheel wts. Manna Farms, OH, 330-924-5200.

Antique Hay Rake, Plow, Disc harrow, 2-Seater Outhouse, 1/2 ton Cart, Rototiller, Cement Mixer, Lawn Sweeper, Red Devil Pro. Paint Mixer, MORE! 610-644-8023.

WANTED: Hodaka or Rupp minibike/motorcycle for fix-up or parts. Doesn't need to run. 717-786-2662

33 RECREATIONAL VEHICLES

Moped, Ex cond 814-355-4613 after 7 PM



GOLF CARTS

Comfortably seats several people. Easy stop & go. Low maintenance

IDEAL FOR: Farms, ranches, yard or garden work, sporting events, hunting

OPTIONS: Utility boxes, lift kit, sport tires & wheels



BURKHOLDER LANDSCAPING
Ephrata, PA 717-278-2449
717-335-0449



2000 Ford Jamboree GT E-450 motorhome. 31 Foot long, 9,700 miles, V-10, 12 Foot slide, basement luggage, 4000 ONAN generator, HYD self leveling jacks, 20 foot awning, Satellite, VCR, DVD, Automatic step, Central air, 1 Owner,

Asking price \$54,000

570-622-6400 or 570-617-4096.

(2) 200hp Yamaha's & Controls & Gile Bracket, approx 280 hrs, exc. cond. \$3,900 ea. 215-766-8361 or 215-262-4084.

34 AUTOS

'93 Ford Tempo, 4dr, V6 auto, PS, PB, cruise, tilt, air, 80,000 miles, black, \$1,800. 717-733-2873

15 passenger Ford Club Wagon, 31,400 mi, 1998, \$12,900. 717-629-9886.

67 Chevy II Nova-57K orig mi-4 DR, \$3,500. Will consider trade for equipment or cattle, 717-642-9199

1994 GMC 4x4, SLT, good cond, 158K mi, asking \$6,250. 717-292-3053.

Hunter Computerized 4-Wheel Alignment w/Rack
Call Tom 717-263-9029

35 TRUCKS AND TRAILERS

Knapheide Stake Body Rack, Brand New for 24' body, complete set \$600/OBO. 610/584-0494.

Pallet Forks for truck crane, self leveling, good cond. \$900/OBO. 610/584-0494.

Buy a pre-owned car or truck for auction net + 7% (Manheim online). Eagles Nest Auto Buyers' Agent, Duncannon, PA. Toll-free 877/801-2230

'01 Dodge 2500, 12 pass van, 318 auto, PS, PB, dual air, Am-Fm cassette, 66,000 one owner miles, new radials, black, excellent condition, \$13,500. 717-733-2873

'90 Ford F350 single whl w/Reading utility body, 351 auto, PS, PB, air, 8,800 GVW, excellent condition, red, \$3,675. 717-733-2873

'00 Dodge 3500, 15 pass van, 360 auto, PS, PB, dual air, 59,000 miles, new Michelins, dark green, \$12,500. 717-733-2873

'01 Dodge 2500 8 pass, 318 auto, PS, PB, PW, PDL, cruise, tilt, dual air, Am-Fm cass, 80,000 one owner miles, new radials, red, \$10,900. 717-733-2873

'00 Chevy Silverado 2500, 2WD, 6.0 auto, PS, PB, air, 8,600 GVW, 66,000 miles, \$11,900. 717-733-2873

'00 Chevy Silverado 1500, 4x4, extended cab, 3 dr, 5.3 V8, auto, PS, PB, air, 71,000 one-owner miles, new radials, pewter, excellent condition, \$15,500. 717-733-2873

'02 Chevy Express LS 3500 extended, 12 pass, 350 auto, PS, PB, PW, PDL, cruise, tilt, dual air, Am-Fm cass., pewter, 27,000 miles w/balance of factory warranty, \$18,500. 717-733-2873

'00 Dodge 3500 15 pass van, 360 auto, PS, PB, dual air, Am-Fm cass., vinyl seats, 16,000 miles, \$12,900. 717-733-2873

'98 Chevy Cheyenne 1500 WT, 4x4, 4.3 Vortec, auto, PS, PB, air, Am-Fm cass, 70,000 one owner miles, burgundy, excellent condition, \$9,950. 717-733-2873

'98 Dodge 1500, short whl. base, 8 pass., 3.9 V6, auto, PS, PB, PW, PDL, cruise, tilt, air, AM/FM Cass., 39,000 miles, \$10,500. 717-733-2873

'97 GMC SL 1500 Suburban, 2WD, 350 auto, PS, PB, cruise, tilt, air, Am-Fm cass., towing package, 78,000 miles, ex. condition, \$9,900. 717-733-2873

'99 Chevy Express 3500 extended, 11 pass, 6.5 dsl, auto, PS, PB, dual air, Am-Fm, 57,000 miles, dark blue, \$12,500. 717-733-2873

'00 Chevy Express 3500 extended, 5 pass, work van, 350 auto, PS, PB, PW, PDL, cruise, tilt, dual air, Am-Fm cass, 90,000 one owner miles, \$10,900. 717-733-2873

'97 Chevy Cheyenne 2500, extended cab, 2WD, 350 auto, PS, PB, cruise, tilt, air, AM-FM Cass., towing package, 8,600 GVW, 63,000 one owner miles, \$10,900. 717-733-2873

'00 Chevy S10 long bed, 4 cyl, auto, PS, PB, air, Am-Fm CD, 62,000 one owner miles, pewter, \$6,950. 717-733-2873

'00 Dodge 1500 Quad Cab, 4 Dr., 2WD, 360 auto, PS, PB, cruise, tilt, air, 6,400 GVW, 58,000 one owner miles, dark blue, \$12,900. 717-733-2873

'00 Chevy S10 extended cab LS, 2WD, 4 cyl, auto, PS, PB, cruise, tilt, air, 47,000 one owner miles, new radials, \$7,950. 717-733-2873

'98 Dodge 1500, Prime Time Conversion Van, 318 auto, PS, PB, PW, PDL, cruise, tilt, dual air, Am-Fm cass., 58,000 miles, new radials, \$10,500. 717-733-2873

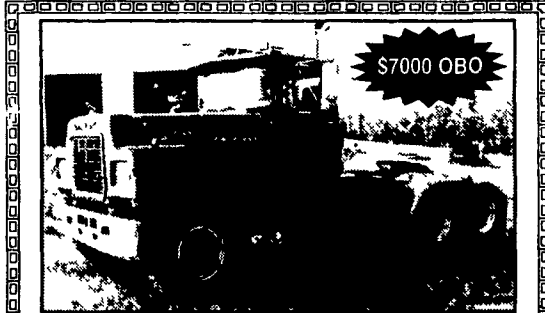
MGM 4-ton trailer 6 1/2 x 12 w/ramp gate, dual axle, dual brakes \$925; Leer Black Truck Cap, fits 8' bed, yrs from 93 - 97, \$225. 717/805-2484.

'91 LN8000 Ford, 210 hp dsl, 6 spd, air brakes, 33k GVW, 22' flatbed, \$5,900. 800-554-6937, ext 214.

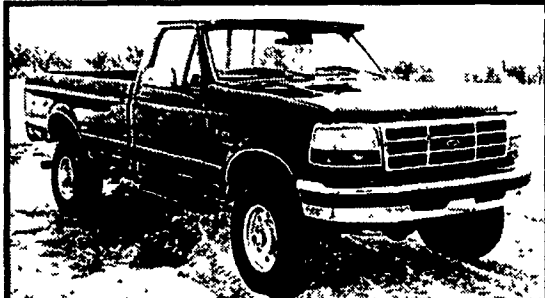
'97 Dodge Ram 1500 SLT, V8, 4wd, bedliner, AC, auto, garage kept, 75k, new trans, w/warranty, \$10,500. 717-692-5714 ask for Mark

Restored 1957 Mercury Montclair, 1 owner. Numerous Model T Ford parts. 814-355-4613 After 7 pm

1998 Ford Louisville Trk, 30k mi, 33k GVW, single axle, dsl, Cummins 300hp eng. Man-Fuller 9 spd, AB, Front 11Rw.5, Back 11RE22.5, 75% tread on ea, alum wheels, DOT Insp, 14' steel bed; 1990 Knuckle Boom (located behind cab) Hiab-Mdl 140, has pump, 13,230 ton at 67", asking \$48,000/OBO 610-689-8936.



1978 Mack R model. Cat 3406 eng., 12 speed trans., 12 x 44 camelback, 2 line wetline, 22.5 spokes. Had complete new cab with A/C in 1988. Has little or no rust. Good condition.
Call Rich at 717-445-4571



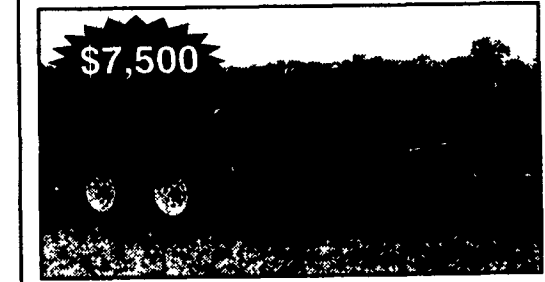
'97 F350 Ford Power-Stroke, AC, PW, PDL, nice, 125K,
\$15,800
717-867-5633



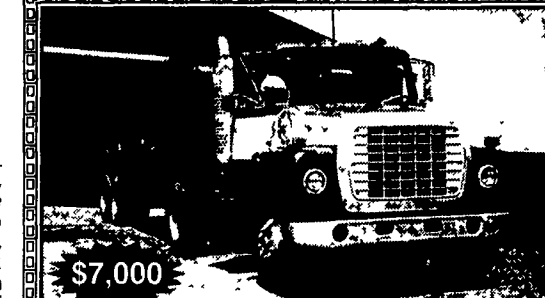
Pequea Trailer
29' Gooseneck, 14,000 GVW
\$15,800
D.S. Fabrication
717-529-2282



96 Marmion, 200,000 orig. miles, 425 Cat, 9 speed Wet Line, Clean Truck, 89 Ravena Frameless Dump Spread Axle, 40' 102
Ph. 717-860-8867



\$7,500
17' Trailer, 6000# axles with Surge Brakes, Mounted Rachets, Led Lights.
717/656-7321



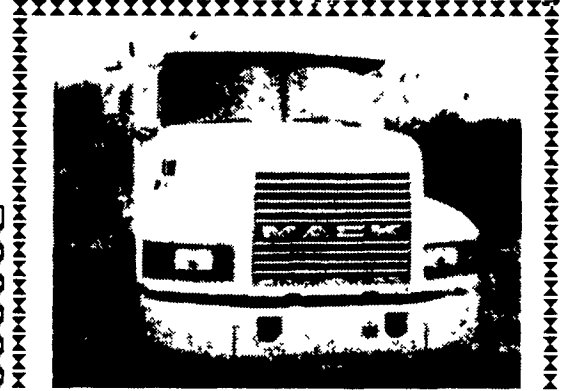
\$7,000
83 Ford L9000 Cummins 9 speed wet line 24' steel dump trailer.
610/562-4807



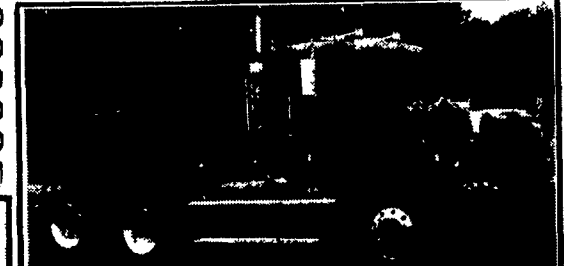
\$8,200
97 Dodge Ram 1500 4x4 SLT, V8 Magnum, Auto., CD Player, A-C, Loaded, Real Nice, 117K Mi.
610/269-3442



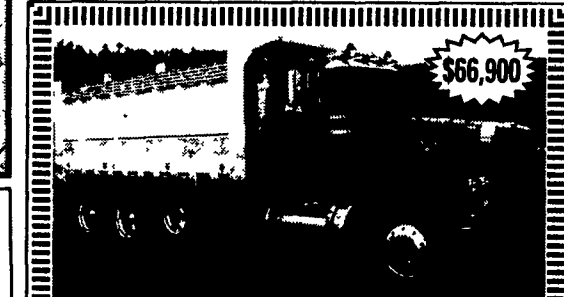
1994 Chevrolet Model 3500 HD 9' utility with Telsta 28' bucket (Model A28D) 6.5 Chev turbo diesel auto trans P/S 1915 radial tires on Budd wheels. 15,000 lb GVW. This truck looks excellent and runs, but needs some mechanical work. **Only \$6,500**
856-456-4030 215-925-0322



'92 Mack CH 613 Flat Top Sleeper, 350 9 Sp Trans, Mack Rears, Air Ride, Bud Wheels, New Tires 70% - **\$7,500 - 570/465-3589**



1996 Freightliner f112 Cat, 365hp with Jake, 9 speed, air ride
\$12,900
610-926-2908
No Sunday Calls



\$66,900
1999 357 Peterbilt Triaxle dump truck, 475 Cat w/Jake, RTO16908LL, 461 4:11 ratio, full lock rears, all alum. whls., Rubber 65%, USTS Heated Alum. Bed w/66" sides, Double framed, 240 wb., 360k mi., Nice cond.

Jerry Hoover 330-878-6630 M-F 8-5
6651 Baertown Rd., Dover, Oh 44622

Anthony L.
LANDIS
EPHRATA AUTO SALES
1589 Division Hwy., Ephrata, PA 17522
Rt. 322, 1 mi. east of Rt. 222 (717) 355-0644

1999 Chevy 1500 Silverado 4x4
4.8 AT, A/C, Cass., Cloth Interior, Longbed, 76,000 Mi.
\$11,900