

Northeast Eggs

Atlanta, Georgia
Report Supplied by USDA
June 26, 2003

Prices were unchanged; however, all sizes were trending slightly higher. The market tone was steady to fully steady. Demand slowed in some locations, but usually ranged moderate to good. Supplies were adequate to closely balanced for immediate trade needs. Breaking stock supplies were usually adequate to short for the moderate to good demand. Spent hen availability was at least sufficient to fully sufficient for the mostly light to fair at best demand.

PRICES TO RETAILERS, SALES TO VOLUME BUYERS, USDA GRADE A AND GRADE A, WHITE EGGS IN CARTONS, WAREHOUSE, CENTS PER DOZEN. RANGE MOSTLY EXTRA LARGE 69-82 72-75 LARGE 64-79 71-73 MEDIUM 52-67 57-59

NORTHEAST AREA: CT, DC, DE, MA, MD, ME, NH, eastern NJ, eastern NY, PA, RI, Northern VA, and VT.

Slaughter Cattle Weekly Review

Oklahoma City, Okla.
June 20, 2003
Report Supplied By USDA

NATIONAL SLAUGHTER CATTLE SUMMARY - Week Ending June 20: Slaughter cattle prices falling as fast as they advanced. This week trades were another 3.00 lower, dressed sales 3.00-5.00 lower. Feedlots continue to market cattle at lower money and short days as long the cash stays ahead of the futures. Consumer demand has slowed at the beef counters, some say because of higher pricing, however the decline in the demand is normal and following its usual seasonal pattern. Cattle futures faltered this week as speculations of the Canadian border opening were being made. Boxed beef prices Friday morning opening lower at an average of 130.05 down 4.88 from last Friday. Sales of slaughter cattle on a national basis for negotiated cash trades totaled a minimal 138,100 through 10:00 a.m. Friday. Last week's full count totaled 184,600 head.

STEERS AND HEIFERS: MIDWEST DIRECT MARKETS: Live Basis: 35-80 percent Choice, 900-1400 lbs 73.00-75.00, wtd avg 73.96. Dressed Basis: 35-80 percent Choice, 550-950 lbs. 118.00-119.00, wtd avg 118.74.

HIGH PLAINS DIRECT MARKETS: Live Basis: 35-65 percent Choice, 900-1400 lbs 74.00-75.00, wtd avg 74.70.

SLAUGHTER COWS AND BULLS (Average Yielding): Slaughter cows and bulls steady to 2.00 higher. USDA's Culler cow carcass cut-out value closed Thursday at 88.77 up 5.48 from last Friday.

COWS: Breakers 75-80% lean 1000-1600 lbs: Montana 43.00-46.00; Oklahoma 42.00-45.00; Alabama 38.50-41.50. Boners 80-85% lean 900-1500 lbs: Montana 40.00-43.50; Oklahoma 41.00-44.00; Alabama 38.50-41.00. Lean 85-90% lean 850-1400 lbs: Montana 37.50-40.50; Oklahoma 39.00-42.50; Alabama 33.50-37.50.

BULLS: 88-92% lean 1500-2200 lbs: Montana 48.25-51.25; Oklahoma 50.50-53.50; Alabama 49.00-52.50.

National Feeder Cattle Weekly Review

St. Joseph, Mo.
Friday, June 20, 2003
Report Supplied By USDA

NATIONAL FEEDER & STOCKER CATTLE SUMMARY - Week Ending June 20 - Total Receipts: 255,100, last week 358,000; last year 274,800. Direct: 59,900, last week 89,200, last year 70,900. Video/Internet: 18,700, last week 33,400, last year 8,300. Auctions: 176,500, last week 235,400, last year 195,600. This week's reported auction volume included 39 percent over 600 lbs and 45 percent heifers. Compared to last week, feeder cattle prices were uneven on lighter receipts. Yearling steers and heifers in the auction markets sold firm to 3.00 higher, but direct sales were steady to 1.00 lower in very slow trading. The latter is to be expected this time of year, but the demand for heavy-weight salebarn feeders is difficult to explain. It's normal for a strong feeder cattle market to continue when the current and upcoming feedlot trade is unclear; but now that even the most remote backwoods hermit realizes that fat cattle are taking a swan dive, these higher replacements are a bit of a surprise. In the last two and a half weeks; fed cattle cash and spot futures markets have lost around 5.00 and the Choice boxed beef cut-out values are down about 15.00.

The United States Government must handle the Canadian border issue with kid gloves or these types of losses could continue. An 800 lb steer is currently costing around 85.00 while October CME Live Cattle contracts are trading in the 68.00 range, which is tough to pencil out. However, feedlot closeouts still brought 75.00 this week and most pens continue to show a profit which makes it hard for cattle feeders to sit on the sidelines. Feeder cattle supplies have dried-up in the upper Midwest and northern Plains and this has been confirmed by an increase in seed-cap and bib-overall sightings in south-central auction markets. These farmer feeders are hitting the seats with loaded guns after taking their own personal crop tour and estimating an overabundant corn crop.

Friday's cattle-on-feed report was 4 percent less than a year ago, while May marketings were 3 percent higher and placements were only 1 percent higher which was less than expected. Calves and stocker cattle sold steady to 2.00 lower than last week, with the exception of the gulf coast where trends were steady to 2.00 higher and many of these light-weights are staying in the Southeast after an extremely wet spring. Moisture conditions are also adequate across much of the Plains, but most pastures in this area are leased for the season and have already been stocked to capacity. Many of the folks who have the ability to add grazers this time of year are busy with wheat harvest. Oklahoma fields have finally dried out and combines are scrambling to get back on schedule. Hopefully the heavily populated eastern seaboard will have nice grilling weather for the three-day Fourth of July weekend.

Eastern Cornbelt Direct Sheep Weekly Summary

Springfield, Ill.
June 20, 2003
Report Supplied By USDA

Eastern Cornbelt Direct Sheep Weekly Report (includes lambs sold in IL., IN., OH., MI.) - Compared to last week, slaughter lambs were steady for weights over 90 lbs but light lambs were weak to 2.00 lower. Slaughter ewe prices were firm to 3.00 higher. Demand is moderate to good and trading remains active. Prices for goats were steady with moderate to good demand and moderate offerings. Carlot lamb carcass prices were mostly 1.50-6.00 lower for carcasses over 40 lbs. Lamb carcasses under 40 lbs were steady. Confirmed sales this week about 76% slaughter lambs, 24% ewes and an additional 606 head of goats. Total sheep and lambs sales 1425, last week 1475 and year ago 1100.

SLAUGHTER LAMBS: Choice 2-3, 95-140 lbs 95.00-105.00; 50-65 lbs 108.00-112.00.

SLAUGHTER EWES: Utility to Good 1-3, 32.00-34.00; Cull to Utility: 29.00-32.00.

SLAUGHTER GOATS (cwt.): Kids: Selection 2: 20-40 lbs 100.00-105.00; 40-60 lbs 90.00-97.50. Selection 3: 20-60 lbs 50.00-65.00. Yearlings: Selection 2: 70-90 lbs 55.00-70.00. Does/Nannies and Bucks/Billies: 50.00-60.00.

This report covers sheep and lambs sold direct off the farm through local country stations.

Note: receipts do not cover total movement in the area.

Eastern Cornbelt Direct Feeder Cattle Weekly

Springfield, Ill.
June 20, 2003
Report Supplied By USDA

Eastern Cornbelt Direct Feeder Cattle Summary - Illinois, Indiana, Michigan, and Ohio: Compared to last week, feeder cattle were weak to 3.00 lower in a light market test. The sharply lower slaughter cattle market and anticipation that the trade restrictions on Canada will be lifted pressured the feeder cattle market. Demand was light and trading activity was very slow. Reported sales consisted of about 27% beef steers, 73% heifers and 0% Holstein steers. Approximately 27% of the cattle marketed this week weighed over 600 lbs. Confirmed sales 350 this week, 700 last week, and 500 last year.

FEEDER STEERS: Medium and Large 1-2: 600-625 lbs 86.25-89.00.

HOLSTEIN STEERS: No test.

FEEDER HEIFERS: Medium and Large 1-2: 425-575 lbs 88.50-93.00.

Prices are based FOB the farm unless otherwise indicated. Delivered prices include freight, commissions, and other expenses.

Nation's Top Hogs Compete At World Pork Expo

DES MOINES, Iowa - Exhibitors from 15 states competed at the World Pork Expo in Des Moines, Iowa, June 5-7.

Dr. Harold Hodson, Cambridge, Iowa, judged the Yorkshire show. He was assisted by Troy Mayhew, also of Cambridge. Dan Baker of West Lafayette, Ind., sold 29 boars averaging \$1,972 and 36 gilts that \$677.

The grand champion and top-selling boar was exhibited by Grimm Purebreds, Maynard, Iowa. He sold to Swine Genetics, Inc., and Kirk Swanson of Cambridge, Iowa, for \$16,000. This boar was also the top-selling boar overall at the 2003 World Pork Expo.

Hathorn Farms exhibited the reserve grand champion and second top-selling Yorkshire boar. The boar sold to Shipley Swine Genetics of Newark, Ohio, and Ifft Yorkshires of Fairbury, Ill., for \$6,000.

Grand champion Yorkshire gilt honors went to William G. Nash and Sons of Sharpville, Ind. She sold to Jerry Reid of Sweet Springs, Mo., for \$1,900.

The reserve grand champion Yorkshire gilt was exhibited by Hathorn Farms and sold to Hirschfeld and Sons of Benedict, Neb., and Terry Stade of Shakopee, Minn., for \$1,900.

The top-selling Yorkshire gilt was shown by Hoewischer Farms of Sidney, Ohio. She sold to Cory Nelson of Newman Grove, Neb., for \$2,600.

Duroc Show

The Duroc show was judged by Dr. Tom Baas, Ames, Iowa, and he was assisted by Clint Schwab, Ames, Iowa. Howard Parrish, Edon, Ohio, sold 13 boars averaging \$1,021 and 17 gilts averaging \$547.

The grand champion and top-selling Duroc boar, shown by Jack Rodibaugh and Sons, Rensselaer, Ind., sold to Tony Holcomb, Yuma, Colo., and Lockman Show Pigs of Kersey, Colo., for \$3,400.

Steve Malcolm and family of Hometown, Ind., exhibited the reserve grand champion boar. He sold to Tim Maxwell of Moscow, Iowa, for \$1,050.

The second top-selling boar, shown by Guy Jackson, Warren, Ind., sold to Shaffer's Gold Rush, Albany, Ind., for \$1,800.

Stein and Stewart Genetics of Odessa, Mo., exhibited the grand champion and top-selling Duroc gilt. She sold to Bill Meyer, Argonne, Wis., for \$1,050.

Guy Jackson of Warren, Ind., showed the reserve grand champi-

on gilt. She sold to Richard Waltman of Augusta, Kan., for \$900.

The second top-selling gilt was shown by Shipley Swine Genetics of Newark, Ohio. She sold to Ernie Birchmeier, Corunna, Mich., for \$950.

Hampshire Show

Chuck Olsen, Irene, S.D., evaluated the Hampshire show, assisted by son Ben Olsen, also of Irene. Kevin Wendt of Green Springs, Ohio, sold 25 boars averaging \$1,207 and 22 gilts that averaged \$694.

Ledger Swine Farms, Williamsburg, Iowa, exhibited the grand champion Hampshire boar. The boar sold to Shaffers Gold Rush, Albany, Ind., for \$4,100.

The reserve grand champion boar was owned by John Graber and family of Stryker, Ohio. He sold to Joy Genetics, Dunbar, Neb., for \$3,000.

Cedar Ridge Farms, Inc., Red Bud, Ill., sold the top-selling Hampshire boar for \$4,300 to Swine Genetics, Inc., Cambridge, Iowa.

The grand champion and top-selling Hampshire gilt was exhibited by Cedar Ridge Farms, Inc., of Red Bud, Ill. She sold to Henry Homen of Homen Farms, Modesto, Calif., for \$3,900.

Earl Cain and family of Chariton, Iowa, exhibited the reserve grand champion gilt. This gilt sold for \$1,100 to RNV Swine Farm of Minden, Nev.

The second top-selling Hampshire gilt was owned by Paul Kite and family of Urbana, Ohio. She sold to Bryce and Jerry Masters of Dover, Ark., for \$1,650.

Landrace Show

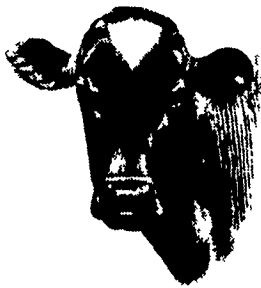
Howard Parrish of Edon, Ohio, judged the Landrace show. Parrish also served as auctioneer, selling three boars averaging \$366 and three gilts that averaged \$516.

The grand champion and top-selling boar was shown by Cedar Ridge Farms, Inc. He sold to Perry Helmuth of Independence, Iowa, for \$1,100.

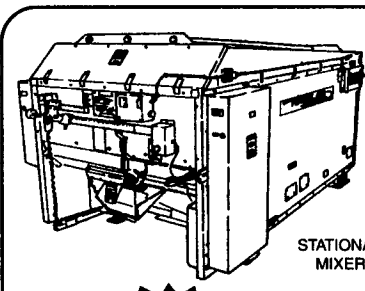
Reserve grand champion Landrace boar honors went to Hoewischer Farms, Inc., Sidney, Ohio. He sold to Prairie State Semen Inc., Champaign, Ill., for \$400.

Grand champion Landrace gilt honors went to Cedar Ridge Farms, Inc. She sold to Andy Paszkiewicz of Denmark, Wis., for \$525.

Cedar Ridge Farms also claimed the reserve grand champion Landrace gilt. She sold to Andy Paszkiewicz for \$325.



Robert Fulton Fire Co
Hay, Straw & Grain Auction
Every Thursday 10 am
Located on the corner of RT 272 & 222 at Wakefield, PA
717-548-2492
717-548-2371
Randall Ranck
Auctioneer 003117-L
Consignments Wanted
No Out of State Checks



Models from 55 to 490 cu. ft. mixing capacity ...

- PROVEN RUGGED
- PROVEN EFFICIENT
- PROVEN ECONOMICAL

Building T.M.R. Mixers Since 1981

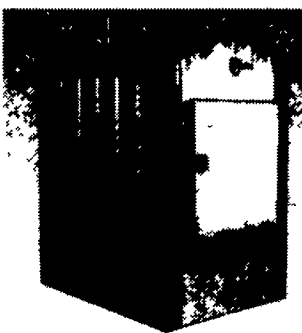
RISSLER
MIXERS & FEEDERS

800-436-5623
717-484-0551

NEW

Some Models Cut and Mix Hay

HEATMOR



Stainless Steel

OUTDOOR WOOD FURNACES

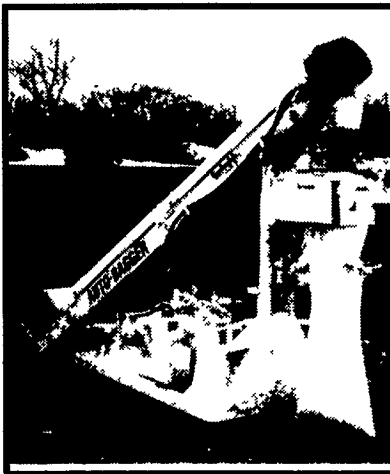
5 Sizes - 19 Colors - Wood or Coal Grates
Forced Draft - Ash Auger Clean Out

COMPARISON WITH OTHER OUTDOOR UNITS

- Burns up to 1/2 less wood
- Emits up to 1/2 less smoke
- Corrosion Warranty up to 10 times longer

New! Wood-Oil & Corn-Burning Options
Outback Heating Inc.

888-763-8617 800-743-5883
Jamestown, NY Staunton, VA



AUTO-BAGGER BLENDER

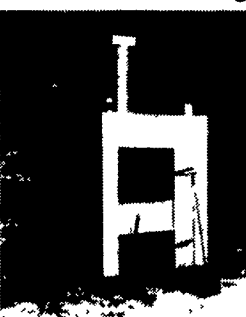
BAG & BLEND MOLASSES FEEDS 50LB. IN 5 SECONDS
OVER 10 PERCENT MOLASSES NOW - ONBOARD MOLASSES HEATER
CLEAN WEEKLY?

F.M.I.
FEEDMOBILE INC

717-626-2680 Lititz, PA

Mahoning Outdoor Furnaces

Cut Heating Cost With An Outdoor Furnace



An Efficient Solution To All Your Heating Needs!

Standard Models Burn Wood, Coal
Multi-Fuel Models Burn Wood, Coal, Oil, Propane, Gas or Waste Oil
"Adapts To All Existing Systems"

www.mahoningoutdoorfurnace.com

The Natural Way To Heat!
Dealerships Available in Some Areas

800-692-5200