

Shippensburg Produce Auction

Shippensburg, Pa.

Report Supplied by Auction

June 12, 13, 17, 2003

APPLES: 5.00-8.50 1/2 BU.
 ASPARAGUS: 1.25-1.70 BUNCH.
 ONIONS: SPRING .30-.50 BUNCH.
 POTATOES: +N2 3.00-4.00 50 LBS.
 RHUBARB: .75-1.50 BUNCH.
 STRAWBERRIES: 12.00-24.00 8 QT.
 FLAT.
 SUGAR PEAS: 12.00-24.00 8 QT.
 FLAT.
 TOMATOES: GREENHOUSE 12.00-15.00 10 LBS.
 FLOWERS: ANNUALS 1.00-6.00
 FLAT; LARGE PERENNIALS .50-4.50
 POT; PLANTERS 1.00-12.00.
 NURSERY STOCK: 5.00-20.00.
 NEXT WEEK'S SALE TUES., THURS., FRI., 9 A.M.

Shippensburg Hay Auction

Shippensburg, Pa.

Report Supplied By Auction

June 14 and 17, 2003

Hay—Straw—Grain

40 LOADS.
 ALFALFA: 75.00-140.00.
 MIXED HAY: 57.50-110.00.
 TIMOTHY: 55.00-195.00.
 BROME GRASS: 60.00-190.00.
 ORCHARDGRASS: 76.00-195.00.
 STRAW: 80.00-130.00.
 MULCH: 20.00-35.00.

Vintage Hay

Vintage, Pa.

Report Supplied by Auction

Thursday, June 19, 2003

Hay—Straw—Grain

TIMOTHY: 100.00.
 GRASS: 75.00.
 MIXED HAY: 145.00.
 STRAW: 132.00.

Tennessee Feeder Cattle Sales

Nashville, Tenn.

June 18, 2003

iReport Supplied By USDA

Tennessee Weighted Average report for Tuesday, June 17, at Dickson, Huntingdon and Cookeville. Receipts 1,311 calves and feeders (17 pct over 600 lbs). Trend: Feeder steers and heifers mostly steady. Average weights and average prices in parentheses.

FEEDER STEERS: Medium and Large 1-2: 25 head, 300-400 lb (355) 100.00-114.00 (106.53); 58 head, 400-500 lb (446) 87.50-102.50 (93.85); 58 head, 500-600 lb (541) 83.50-95.50 (90.09); 34 head, 600-700 lb (642) 77.00-89.50 (83.29); 7 head, 700-800 lb (716) 78.50-83.00 (80.83). Med./Lge. 3: 20 head, 400-500 lb (447) 76.00-93.50 (86.17); 28 head, 500-600 lb (555) 73.00-85.00 (80.50).

FEEDER HEIFERS: Med./Lge. 1-2: 35 head, 300-400 lb (365) 81.00-95.00 (88.16); 122 head, 400-500 lb (450) 76.50-89.50 (83.15); 81 head, 500-600 lb (540) 74.00-85.00 (78.12); 42 head, 600-700 lb (630) 69.00-79.00 (74.53); 11 head, 700-800 lb (744) 67.00-72.50 (69.92). Med./Lge. 3: 29 head, 300-400 lb (367) 78.00-88.00 (83.47); 47 head, 400-500 lb (445) 70.00-82.00 (77.09); 21 head, 500-600 lb (539) 70.00-80.00 (75.66); 11 head, 600-700 lb (644) 65.00-74.50 (69.93).

FEEDER BULLS: Med./Lge. 1-2: 12 head, 300-400 lb (368) 83.50-111.00 (96.26); 60 head, 400-500 lb (455) 84.00-95.00 (88.51); 72 head, 500-600 lb (553) 76.00-90.50 (83.30); 31 head, 600-700 lb (650) 73.50-82.00 (75.95); 12 head, 700-800 lb (731) 68.00-73.00 (71.56).

East Coast and North Central Veal Report

Des Moines, Iowa

June 17, 2003

Supplied By USDA

CARLOT VEAL CARCASS REPORT, June 16: Compared to trading last week: Northeast special fed veal not fully established on lightly reported trades, with a higher undertone prevailing on light offerings and very good demand. North Central hide on 5.00 higher. Demand very good on very light offerings.

VEAL CARCASS, SPECIAL FED, HOT BASIS, FOB PRODUCTION POINTS: Northeast 140 head. North Central 385 head. Hide-On, 240-300 lbs: North Central 185.00. Hide-Off, 215-275 lbs: Northeast: 232.00.

CONTRACT INFORMATION: Hot Basis, Hide-Off — (As of June 17, 2003) — Contract calves slaughtered this week: 185.00-220.00. Packers base market 190.00-220.00. Future contracts offered: Firm Bottom 190.00-195.00, Firm Top 210.00-215.00. Firm Bottom, 192.00, Split Half Top 210.00. Fixed 198.00, 199.00 and 200.00.

• North Central - OH, IN, IL, MI & WI.
 • Northeast - MA, MD, PA, NY, NJ, DE, CT & VT.

WEEKLY DISTRIBUTIVE, LESS THAN CARLOT, EAST COAST AREA

VEAL CUTS TRADE, SPECIAL FED: Market for Tuesday, June 17 — Compared to last week: Distributive special fed cuts trading firm to higher on very good demand and light offerings of fresh and cold storage cuts due to reduced veal slaughter numbers due to the U.S./Canada border being closed due to BSE.

Prices per CWT: Carcass, hide off 200-250 lb 255-290.00; Foresaddles 85-110 lb 185-235.00; Kasher Foresaddles 90-110 lb 195-225.00; Hindsaddles 85-115 lb 315-355.00; Loins, regular 17-25 lb 285-355.00; Loins, 4x4 trmd 12-18 lb 475-650.00; Hotel Racks, 8 rib 15-21 lb 500-600.00, 7 rib 14-20 lb 500-575.00, 6 rib 13-17 lb 595-800.00; Chuck, square cut 36-47 lb 120-170.00; Shoulder, full 14-20 lb 170-185.00; Legs, double 70-90 lb 325-355.00, TBS 3-piece 24-32 lb 665-725.00, BHS heel-out 27-35 lb 495-600.00; Top Round, trmd, cap-off 8-10 lb 895-1050.00; Breast 10-12 lb 75-90.00; Necks, bone-in 24-28 lb 135-150.00; Stew Meat, regular 190-325.00; Boneless Trimmings 75-80% lean 63-80.00; Heavy Nature Green Hides, per piece 40-42.50.

Eastern Cornbelt Direct Feeder Cattle Weekly

Springfield, Ill.

June 13, 2003

Report Supplied By USDA

Eastern Cornbelt Direct Feeder Cattle Summary — Illinois, Indiana, Michigan, and Ohio: Feeder steers were mostly steady to weak in a light market test. Feeder heifers were mostly 1.00-4.00 higher. The weaker slaughter cattle market and higher feeder prices slowed trading activity in some areas. Demand was light. Reported sales consisted of about 16% beef steers, 67% heifers and 17% Holstein steers. Approximately 73% of the cattle marketed this week weighed over 600 lbs. Confirmed sales 700 this week, 1550 last week and 150 last year.

FEEDER STEERS: Medium and Large 1-2: load lot 540 lbs 98.00; load lot 825 lbs 83.75.

HOLSTEIN STEERS: Medium and Large 3-4: 725-825 lbs 69.50

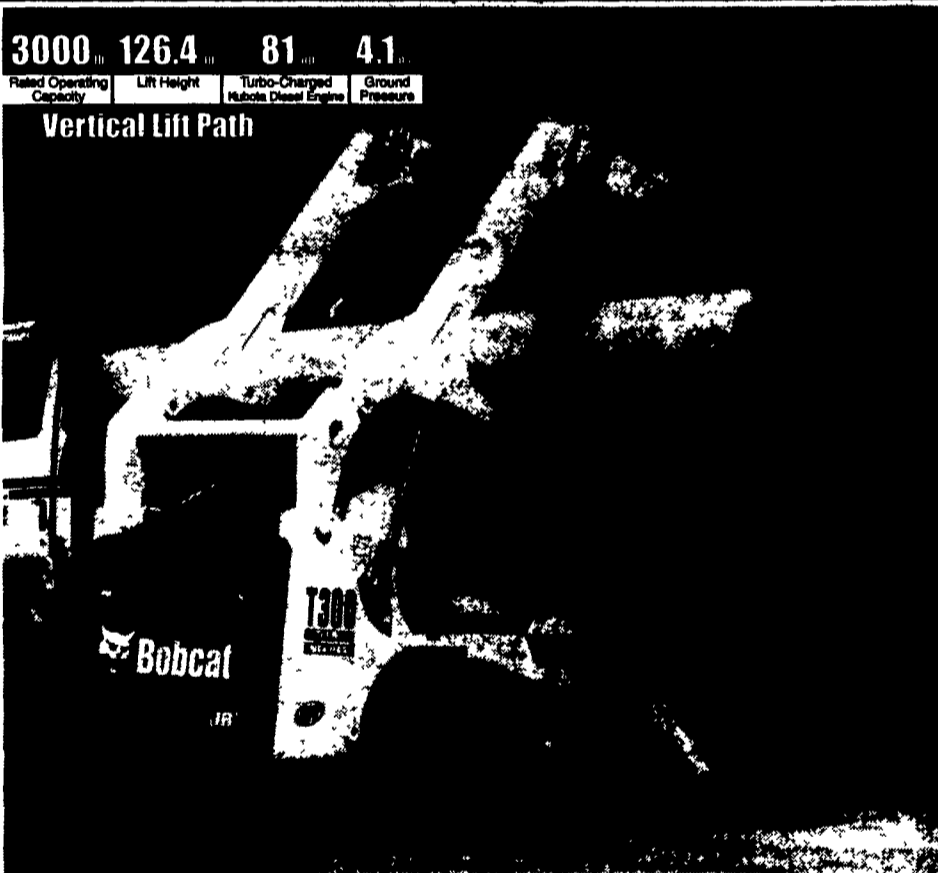
FEEDER HEIFERS: Medium and Large 1-2: 525-575 lbs 91.50-93.00; 700-800 lbs 81.50-83.50; small lot 875 lbs 75.75.

Prices are based FOB the farm unless otherwise indicated. Delivered prices include freight, commissions, and other expenses.



Tough Tracks for Tough Tasks

New Bobcat T300 Compact Track Loader delivers superior traction and loads of lift!



Get in earlier, finish faster

Extend your working season with the powerful, versatile T300 compact track loader! Keep crews working even when the weather won't cooperate!

Greater performance, comfort and value

Rugged rubber tracks give the T300 extra traction, greatly reduced ground pressure and low ground disturbance. Superior flotation, too, for working on soft, wet, or muddy ground where other machines stop dead!

See us for the full line of world-leading Bobcat equipment!

Power to spare

You get great pushing power, plus lots more for running attachments, including the Brushcat® rotary cutter, dozer blade, landscape rake, stump grinder, tiller and others.

Vertical lift path

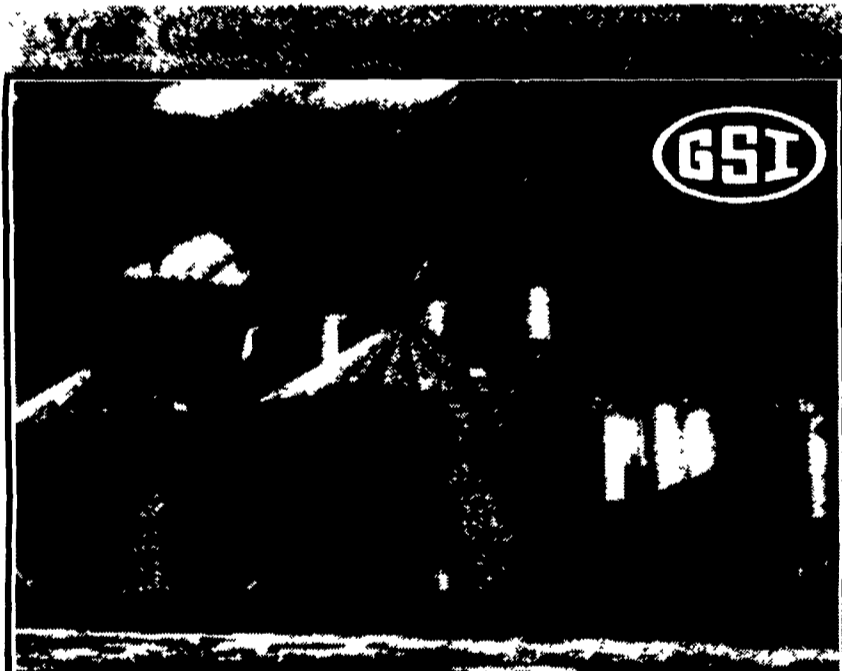
The T300's low-profile lift arms give the operator a great view to all four corners of the machine — and the vertical lift path delivers excellent reach and lift capacity for handling heavy loads!

- | | | | |
|---|--|---|---|
| Best Line Leasing, Inc.
Muncy, PA
570-546-8422
800-321-2378 | Bobcat of Lancaster
Ephrata, PA
717-859-4646 | Bobcat of Reading
Reading, PA
610-926-2441 | BS & B Repair
Mifflinburg, PA
717-966-3756 |
| Burchfields Inc.
Martinsburg, PA
814-793-2194 | Clugston Ag & Turf Inc.
Chambersburg, PA
717-263-4103 | Cumberland Bobcat
Mechanicsburg, PA
717-790-9810 | Grumelli's Farm Service
Quarryville, PA
717-786-7318 |



Bobcat
One Tough Animal

Included with your newspaper subscription is an Auctioneer Guide, a free manual on what you should know when bidding and selling at auctions.

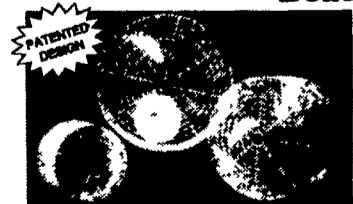


- Weight-Tronix Feed Mill
- Transport Augers
- Bucket Elevators
- Stirring Systems
- Utility Augers
- Feed Bins
- Wet Tanks
- Grain Bins
- Air Drying Systems
- Grain Dryers
- Parts & Motors

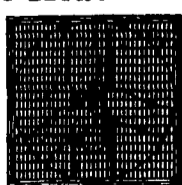
We Sell and Install Farm and Commercial Bin Packages. Or We Provide Free Bin-Jack Use With Your New Bin Purchase.

FANS IN STOCK NOW!

Beat The Heat



Barn Stir Fans 24" & 36"



Dayton

36" & 48" Belt Drive
36" Direct Drive

ACE
Hardware
Your Helpful Hardware Folks!

EMHERR
FARM & HOME CENTER
464-3321 or 800-732-0053

www.aceretailer.com/emherr
Herrville Rd. & Rt. 272 South
2 1/2 Miles South of Willow Valley Square
Not Responsible For Typographical Errors

Mon.-Fri. 6:30 am-8:00 pm
Sat. 7:30 am-8:00 pm