

Eastern Cornbelt Direct Feeder Pig Weekly

Springfield, Ill. June 6, 2003 Report Supplied by USDA Eastern Corn Belt Direct Feeder Pig Weekly Summary...

FOB EASTERN CORNBELT - Illinois, Indiana, Ohio, Michigan. Receipts: 11,053; last week 11,887.

EARLY WEANED PIGS: 10 LB BASIS, estimated 50-54% lean value: Lot size 250-750: 1,773 head, 27.59-33.00...

PIGS, 40 LB BASIS, estimated 50-54% lean value: Lot size 250 head or less: L 210 head, 40.00; lot size 250-750: 2,070 head, 37.00-41.50...

PIGS, 50 LB BASIS, estimated 50-54% lean value: Lot size 250-750: 400 head, 43.00.

NOTE: FOB prices quoted on per head basis "picked up" at sellers farm; prices do not include freight.

DELIVERED EASTERN CORNBELT BASIS: Receipts: 5,050; last week 9,350. Volume by state or province of origin: Oklahoma 57.4%; Manitoba 13%; Ontario 11%; Missouri 10%; Missouri 10%; North Carolina 8%.

EARLY WEANED PIGS: 10 LB BASIS, estimated 50-54% lean value: Lot size 250-750 lb: 510 head, 30.00; 750 or more: 2,900 head, 30.21.

PIGS, 45 LB BASIS, estimated 50-54% lean value: Lot size 250-750: 1,065 head, 37.00-46.43, wtd. avg. 42.76.

PIGS, 55 LB BASIS, estimated 50-54% lean value: Lot size 250-750: 575 head, 46.00.

Delivered Eastern Cornbelt prices include freight.

Most lots of 40-60 weight pigs have a sliding value from the negotiated weight basis which is calculated on the actual average weight of the lot plus or minus .35-.40 cents per pound.

Estimated lean value is projected to base slaughter weights with normal confinement feeding conditions.

Vaccination and health program values are not included but health status should be disclosed.

New Wilmington Livestock Feeder Pig Sale

New Wilmington, Pa. Report Supplied by PDA Friday, June 6, 2003

248 FEEDER PIGS. 49.0 LBS. PER PIG, 63.38 PER HUNDREDWEIGHT, 31.30 PER HEAD.

FEEDER PIG SALE NO LONGER GRADED.

50 HEAD 20-30 LBS. 60.00-80.00, ONE LOT 90.00; 48 HEAD 30-40 LBS. 60.00-77.50; 30 HEAD 40-50 LBS.

75.00-80.00; 63 HEAD 50-60 LBS. 65.00-80.00; 32 HEAD 60-90 LBS. 57.50-75.00; 14 HEAD 100-150 LBS. 42.50-47.50.

FREON REPLACEMENT R-12

12 Can Case - \$150 36 Pound Canister - \$275 C/Air R-22 Canister - \$150 Pro-seal stops all leaks, oil, etc No Retro Fitting - Simple Installation 800-807-9612

Graystone Small Animal Sale LLC

(Root's Market - Manheim, PA) Every Tuesday 4:30 pm Receiving 6 am till sale time All kinds of Poultry, Rabbits, Guinea Pigs, Pigeons 717-898-0755

Young Turkey Parts And Bulk Meat

Des Moines, Iowa June 10, 2003 Report Supplied By USDA

NATIONAL YOUNG TURKEY PARTS AND BULK MEAT, Frozen, unless specified, cents per lb, delivered first receivers, part and full trucklots, as of June 10. The undertone on fresh white meat was steady at best, frozen barely steady to instances weak.

DOMESTIC TRADING: BREASTS, 4-8 lbs: Grade A - avg. 87.00; Grade A Fresh - avg. 110.00; Plant Grade - 83.50. DRUMSTICKS: TOM - avg. 21.00; HEN - avg. 20.00.

EXPORT TRADING: DRUMSTICKS: TOMS: avg. 20.25. WINGS, FULL-CUT: TOMS - avg. 16.00. WINGS, V-TYPE, TOMS: avg. 21.00.

Pa. Grain Report

June 9, 2003 Report Supplied By PDA Compared with last Monday's market for Eastern and Central Pennsylvania: Corn steady to .05 lower.

SOUTHEASTERN PENNSYLVANIA Corn No. 2-y: 2.89-3.05, avg. 2.97; contract for harvest 2.31-2.54. Wheat No. 2: 3.20-3.36, avg. 3.31; contract for harvest 3.16-3.36.

for the personal touch McCoy Cattle Co. Lancaster Stockyards Your Marketing Link to the Eastern Cattle Feeder Contact: Bill McCoy Pat McCoy Office: 717-397-5122 Cell 717-475-5122 Res: 717-569-5044

SOUTH CENTRAL PENNSYLVANIA

Corn No. 2-y: 2.85-3.04, avg. 2.96. Wheat No. 2: 3.00-3.35, avg. 3.09. Barley No. 3: 1.85-2.20, avg. 2.01. Oats No. 2: 1.80-2.00, avg. 1.93.

WESTERN PENNSYLVANIA Corn No. 2: 2.54-2.90, avg. 2.84. Wheat No. 2: 3.00-3.15, avg. 3.07. Barley No. 3: 1.90. Oats No. 2: 1.80-2.30, avg. 2.01.

CENTRAL PENNSYLVANIA Corn No. 2-y: 2.98-3.10, avg. 3.04. Wheat No. 2: 3.00-3.20, avg. 3.10. Barley No. 3: 2.20-2.25, avg. 2.23. Oats No. 2: 1.90-2.20, avg. 2.07.

LEHIGH VALLEY AREA Corn No. 2-y: 3.00-3.10, avg. 3.05. Wheat: No. 2: 3.30-3.36, avg. 3.34. Barley No. 3: 2.10-2.20, avg. 2.17.

EASTERN AND CENTRAL PENNSYLVANIA SUMMARY

Corn No. 2-y: 2.89-3.05, avg. 3.01, month ago 3.03, year ago 2.39. Wheat No. 2: 3.10-3.36, avg. 3.20, month ago 3.22, year ago 2.79.

FORTH CENTRAL OHIO Prices FOB Truck: Corn 2.42-2.50. Wheat 3.07-3.24. Soybeans 6.16-6.23.

Corn Belt Feedstuff

St. Joseph, Mo. June 10, 2003 Report Supplied By USDA CORN BELT FEEDSTUFF: Feedstuff prices were steady to weak except for soy-

bean meal which was supported by good export demand and strong oil trade. Mills are back in business after the holiday and inventories are rebuilding.

GOLD & SILVER WATCH

DOES THE CURRENT STOCK MARKET FIASCO GOT YOU DOWN? HAVE YOU THOUGHT LATELY ABOUT ALTERNATIVE INVESTMENTS? YOU MIGHT HAVE BEEN WAITING FOR THIS OPPORTUNITY TO DIVERSIFY YOUR INVESTMENT PORTFOLIO.

LEHIGH VALLEY FUTURES, INC.

HAS THE KNOWLEDGE AND EXPERTISE TO ASSIST YOU IN THESE INVESTMENTS IN ADDITION TO GOLD AND SILVER, LEHIGH VALLEY FUTURES, INC. THROUGH ITS FCM TRADES ON ALL MAJOR FUTURE EXCHANGES, FUTURES HAVE BEEN OUR ONLY BUSINESS FOR 30 YEARS.

FOR INFORMATION CONTRACT DETAILS AND FUTURES AND OPTIONS STRATEGIES PHONE (610) 577-0002 OR 800-543-8939

LEHIGH VALLEY FUTURES INC.

410 Bridge Street Weissport, PA 18235 e-mail: greg@lvfutures.com bryen@lvfutures.com

The risk of loss in trading futures and options can be substantial. Futures and options trading may not be suitable for everyone.

week and this week's forecasts call for warmer temperatures.

SOYBEAN MEAL: 48 percent rail was 8.00 higher at 194.50-196.50. 48 percent truck was 8.00 higher from 194.50-206.50 per ton. CORN BY-PRODUCTS: Gluten Feed 21 percent, Interior Points was steady to 2.00 Lower from 60.00-65.00;

MILLFEEDS: Northwest was steady to 2.00 lower from 52.00-60.00; Buffalo 2.00 lower from 56.00-59.00 per ton.

ALFALFA PELLETS: Toledo, Ohio 17 percent dehydrated was steady from 148.00- 171.00; meal steady from 151.50-174.50.

DISTILLER'S DRIED GRAINS: Central Illinois was steady to 1.00 lower from 80.00-87.00; Chicago 1.00 lower to 1.00 higher from 82.00-92.00;

BREWER'S DRIED GRAINS: Newark, NJ was steady at 94.00; Williamsburg, VA was steady at 84.00 per ton.

Morrison's Cove Livestock Hay

Martinsburg, Pa. Report Supplied By Auction Monday, June 9, 2003 Hay-Straw-Grain ALFALFA: 210.00-290.00. GRASS: 175.00-245.00. ROUND BALES: 87.50-142.50. STRAW: 100.00-117.50. NEW HAY: 127.50-230.00. HAY AUCTIONS MONDAYS AT 12:30 P.M. CALL KEN DOWNS, 814-793-3723.

Robert Fulton Fire Co. Hay Market

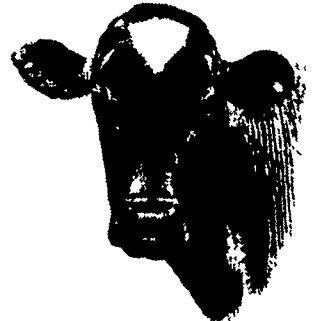
Wakefield, Pa. Report Supplied By Auction Thursday, June 12, 2003 11 LOADS. ALFALFA AND GRASS MIX: 90.00-199.00, AVG. 167.00. TIMOTHY: 200.00. EAR CORN: 105.00. RYE STRAW: 87.00-94.00, AVG. 90.00. SALE EVERY THURS., 10 A.M.

Lebanon Produce Hay Auction

Reistville, Pa. Report Supplied By Auction Tuesday, June 10, 2003 Hay-Straw-Grain ALFALFA: 140.00. TIMOTHY: SMALL BALE 2.80. ORCHARDGRASS: 170.00. MIXED HAY: 29.00 BIG BALE, 2.90 SM. BALE. GRASS HAY: 60.00-165.00. STRAW: 110.00. HAY AUCTION EVERY TUES., 10 A.M.

Vintage Hay

Vintage, Pa. Report Supplied by Auction Thursday, June 12, 2003 Hay-Straw-Grain MIXED HAY: 80.00-120.00. TIMOTHY: 130.00, NEW CROP 147.00.



Advertisement for CHORE-TRONICS Controls - The Simple Solution. Features an image of a control panel and a list of benefits: Controls all in-house systems, Simple, precise operation, Flexible and upgradeable, Links to computer for remote monitoring and control options, Built-in alarm system and 100-day history.

Advertisement for Northeast Agri Systems, Inc. Contact Us For All Your Hog Facilities Needs. Call John Zimmerman For New & Remodeled Housing, Call Lynn Hickernell For Parts & Service. Price Guarantee on all products for which we are an authorized distributor.