

International 'Red Power'

(Continued from Page A26)

enthusiasm for red tractors and related memorabilia. The club's origin has roots to the early 1990s, when two Indiana men, a former IH dealer and a farmer, started the first IH Club. Today there are 32 chapters in the U.S., Canada, and Sweden. The clubs conduct semi-annual shows at different sites throughout the U.S.

Pennsylvania has three Red Power clubs with more than 500 members.

In addition to admiring the tractors and equipment, one of the focuses of the club is to offer expertise in restoring old tractors and equipment to its original showroom condition.

"But some guys like the stuff just the way they found it — rusty," Trapani said.

Club membership costs only

\$10 annually. Members meet monthly and also publish a newsletter.

Trapani and Bartlow are members of Chapter 17 in charge of hosting the convention.

They selected the Bloomsburg Fairgrounds as the site because it is the largest in the state, according to Trapani.

"You don't need to be a club member to attend the convention or to display things," Trapani said.

Neither do you need to preregister, although it will save time if you do.

For general information about the show, call Trapani at (570) 275-5847. For tractor pull information, call Brian Shively at (570) 922-4841. For vendor space, call Marvin Walter, (570) 837-3386. For memorabilia displays, call Helen Barto at (570) 547-0851.

Network Preserves History

PARK RIDGE, Ill. — International Harvester Collectors provides a worldwide collector's network for the preservation of history, products, literature, and memorabilia of the International Harvester Company.

The IH Collectors Club was organized in July 1990. There are more than 4600 members from 49 states and several other countries. There are 27 active chapters sanctioned to promote local involvement, with interest in chapters continually expanding.

The purpose of the club is to establish the International Harvester Collectors as an identity to which collectors of IH products can relate: promote IH collecting, restoration, and show displays through communication among members; help preserve, research, and complete the history of the IH company; aid shows who feature IH with a file of member's show pieces; and hold a large annual show (Red Power Roundup) in conjunction with an IH feature at a different host show each year.

Club member benefits: Members receive a quarterly publication, Harvester Highlights, which

provides information on club business; reports from various committees; upcoming show listings; news from chapters; feature stories, restoration information; and limited free publication of wanted and for-sale ads. Insurance is provided for members at club-sanctioned shows.

Besides the annual summer show, there is a winter convention with banquet for members. All IH auction supported by chapters in a different state each year. The club also supports displays at local farm shows.

Purpose and benefit of chapters: The chapters organize local interest, hold annual state shows, work together to provide locations for the roundup, winter conventions and auction, provide local newsletters, hold meetings with family involvement, promote IH collecting, restoration and show displays, and support the national organization.

Dues for the yearly national membership are \$10. Chapter dues vary by state. The club membership address is on the application.

International Harvester Related Links

General IH related sites:
 • A brief history of the International Harvester Company: www.oldengine.org/members/ihc14/, click on International Harvester Company link.

• IHC Web Ring: <http://u.webring.com/hub?ring=ihc&id=1&hub>.

• McCormick-International Harvester Company Collection (Archives): www.ihcc15.com/usefull-links.htm.

(Foreign) general IH related sites:

• The unofficial Website of IHC-Neuss on Rhine/Germany: www.ihcneuss.de.

Farmall related sites:
 • The Antique Farmall Internet Discussion Board: www.atis.net/cgi-bin/Farmall.pl.

• Farmall H.com: www.farmall-h.com.

• Case IH: casecorp.com.

• IHC World: www.geocities.com/MotorCity/Garage/9399/Tractorindex.html.

• The Red Fritz Farm: www.geocities.com/Heartland/Fields/5890/.

• Mark's Farmall H Restoration page: www.ironnaz.com/MarksHomePage/FarmallH.htm.

• Brian's Farmall Tractor Page: www.geocities.com/Yosemite/Geysers/2544/.

Shows and events featuring IH:

• Red Power Roundup 2003: www.antiquefarm.org/HistoricFarmDays2003.html.

• 14th Annual IH Scout and Light Truck Nationals 2003: www.midnitestar.org/.

• IHCC Chapter/State Red Power Roundups: <http://members.aol.com/ihtcollectors/stateshows.htm>.

Stationary engine related sites:
 • Stationary Engine Mailing List: www.atis.net/stationary-engine_sub_form.shtml.

• The Antique Small Engine Collectors Club: www.asecc.com/.

Club Cadet related sites:
 • Cub Cadet Garden Tractor by International Harvester Unof-

ficial Home Page:

www.ihcubcadet.com/.
 • International Cub Cadet Forum: www.ihcubcadet.com/forum.

Memorabilia, toys, and collectible related sites:

• The Toy Farmer: www.toyfarmer.com/.

• National Farm Toy Museum: www.dyersville.org/museum.htm.

• Cub Cadet Toys: www.ihcubcadet.com/cubtoys.htm.

• Ertl Farm Toys: www.ertltoys.com/.

International motor truck, scout, and light truck related sites:

• The Binder Bulletin: www.binderbulletin.org/.

• Old IHC Truck Special Interest Group: www.oldihc.org.

• The Scout and International Motor Truck Association: members.aol.com/ht_a/ihsimta/IHSIMTA.html.

• International Harvester Digest (Truck): www.digest.net/ihc/.

Medium and heavy truck related sites:

• Navistar International Trucks: www.navistarinternational.com.

IH and Navistar, Powerstroke diesel engine sites:

• The IH Diesel Engine Page: <http://members.aol.com/EldonMcf/>.

• The Power Stroke Registry: www.powerstrokeregistry.com/.

All makes tractor and old iron related Webrings and sites:

• Northern Indiana Power from the Past: www.winamacpowershow.com/.

• Vintage Farm Tractor Ring: <http://S.webring.com/navcgi?ring=tractors;list>.

• Antique Tractor Resource Page: www.antiquetractors.com/.

• Fort Allen Antique Farm Equipment Association: www.oldengine.org/members/rotigel/.

• OLFS (foreign): www.olfs-online.de/.

Magazines:

• Red Power Magazine: www.redpowermagazine.com/.

• Antique Power & This Old Truck Magazines: <http://antiquepower.com/>.

• Gas Engine Magazine: www.stemgas.com/.

• Yesterday's Tractors: www.yesterdaystractors.com/.

2003 IHCC National Officers, Directors

• President: Bill Swope, 4731 Liberty Hi Rd., Cygnet, OH 43413, (419) 655-2945.

• Vice President: (Harvester Highlights Editor), Darrell Darst, 1857 W Outer Highway 61, Moscow Hills, MO 63362, (314) 356-4764. E-mail: Farmall130@socket.net.

• Secretary: Johnny Mitchell, 150 Center Hill Rd., Lebanon, TN 37087-9535, (615) 444-6944.

• Treasurer: Glen Mlnarik, 124 Marion, Howells, NE 68641-3308, (402) 986-1352. E-mail: Gjmlnar@megavision.com.

• Director: James Gall, 3027 Kestral Rd., Reserve, KS

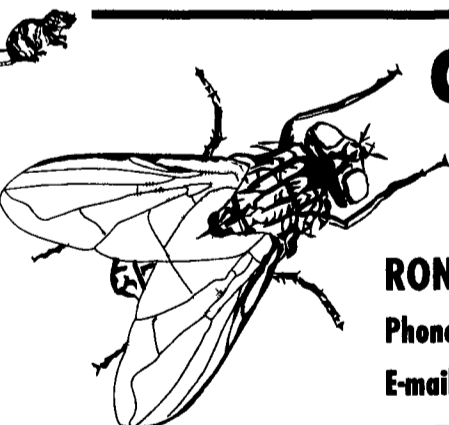
66434-8152, (785) 742-2657.

• Director: Larry Meservey, 380 SE Daisy Ln., Trenton MO 64683-8320, (816) 359-2467. E-mail: landr@lyn.net.

• Director: David Garber, 66495 County Road 33, Goshen, IN 46528-9343, (219) 642-3132.

• Director (IHCC Webmaster): John Glancy, 1318 W Main St., Springfield, OH 45504, (937) 525-0000, EXT 201. E-mail: suprscout@aol.com.

• Director: Jim Nielsen, 1960 V Ave., Woodford, IA 50276-8039, (515) 999-9072. E-mail: ihguy@att.net.



C&M Farm Services Inc.

Elizabethtown • Pennsylvania

"Unique Farm Services"

RONI CLARK • Licensed & Insured

Phone: 717.361.6065 • Fax: 717.361.0867

E-mail: cnoflies@paonline.com

We offer the following services for the most complete pest control possible. Whether your need is to control pests, eliminate harmful bacteria, or encourage beneficial insects, we have the tools to help you.

NEW FLY CONTROL
 Water-based liquid

3% Pyrethrins \$87/gallon

FLY PARASITES

15,000 Colony \$15.00

25,000 Colony \$20.00

Shipping is Additional

Flies and beetles are susceptible to many naturally occurring diseases. Applied twice a week, BALANCE (a naturally occurring fungus) works to reduce the adult fly & beetle population.

BALANCE
 Controls adult flies

Call for pricing

KWIK BAIT

\$120/40 lb. pail

PLUS complete supplies for the do-it-yourselfer

..... SAVE TIME
 we can do it for you!

Your Grain Equipment Headquarters



- Weight-Tronix Feed Mill
- Utility Augers
- Air Drying Systems
- Transport Augers
- Feed Bins
- Grain Dryers
- Bucket Elevators
- Wet Tanks
- Parts & Motors
- Stirring Systems
- Grain Bins

We Sell and Install Farm and Commercial Bin Packages. Or We Provide Free Bin-Jack Use With Your New Bin Purchase.

ACE
 Hardware
 Your Helpful Hardware Folks!

EMHERR
 FARM & HOME CENTER

464-3321 or 800-732-0053

www.aceretailer.com/emherr

Herrville Rd & Rt 272 South

2 1/2 Miles South of Willow Valley Square

Not Responsible For Typographical Errors

Mon.-Fri 6:30 am-8:00 pm

Sat. 7:30 am-6:00 pm