

DI-ACRO Press Brake, mdl. 75-6	\$10,000
Wysong Shear, mdl. 1472, 14Ga.x6'	\$5,000
Hyd. Press Brake - Atlantic 8'x75 Ton	\$10,000
Hyd. Press Brake - Atlantic 10'x120 Ton	\$15,000
Cincinnati Cylindrical Grinder 14"x36"	\$2,000
PALL Non-Refrigerated Air Dryer, mdl. 11450DHA	\$1,000
Stud Welder - Nelson Nelweld 4000, Dual Gun, New	\$10,000
Steel Rolling Work Platform	\$500

(304) 725-2727

'89 F250 HD extended cab, 4wd, 154k miles w/ new eng, \$4500. 717-838-4610

SAVE STORAGE OR ROAD TRAILERS, 20' or 40' GROUND LEVEL CONTAINERS. PROMPT & COURTEOUS SERVICE. REASONABLE RATES. YOUR STORAGE SOLUTION, INC. 610/921-1955, 1/800-220-6082

Reefer, 90 int. S4700 series, 18' Hackney insulated box, alum. ext. floor, roll-up door, curb side door, DTA 360 dsl. 6-spd. Thermoking CB3 w/elect. standby, non-CDL, 138,000 orig. mi., super cond., \$19,500. 717/587-0357

1985 Autocar tri-axle, 17ft alum dump, 300 Cummins, Jake brake, 8 spd LL, heavy suspension, auto tarp, good cond, \$16,000 obo. 717-362-3537

86 Int. 1600S 7.3L diesel, 14' steel floor dump bed & hoist, new tires, new inspection, lots of new parts, needs engine work. \$3000 OBO. 717/899-6628

1983 Ford F600, scissors lift/dump truck, new tires & paint, 65,000 mi, \$5,000. 4 4 3 - 5 0 6 - 7 5 8 7 .

Bucket truck, 35ft, 1970 IH, PS, good for painting & tree work. Also IH parts. 732-297-1295

77 GMC 14ft stone dump, 350 Cummins, 13 spd RR, 11R X 22.5 rubber, G cond \$3,500. 72 F750 9ft stone dump, 361 Recon motor, inspected, G cond \$2,750. 717-677-0800

Pintle hook flat trailer, 6 ton, 20' deck, needs floor, \$700 obo. 484-239-9119.

10 ton beaver tail 17' not completed, \$700 obo. 484-239-9119.

24 ton, beaver tail, equipment trailer, 21' flat deck non-detachable, out of service, not inspectible, mechanic special, \$1,100 obo. 484-239-9119.

'82 White Road Boss single axle truck tractor, 6V92 silver, rebuilt eng, 9 spd trans, good running work truck, PA inspectable, \$2,750 obo. 484-239-9119.

1992 Volvo, new Detroit 60 series, 365hp, new brakes & drums, well maintained w/receipts, \$9000. 610-488-9190

99 F250 4X4, SC, PW, PM, XLT, 5.4, 5 spd, 67K, Ex cond, gooseneck hitch, \$18,000/obo. No Sunday Calls. 570-437-3773

1994 Isuzu NPR, 14 ft Morgan box truck, dsl, auto, 11,000 GVW, 100+k miles, \$6800 obo. 610-857-8246, 610-476-0408


1998 Dodge 3500 dually, 24 valves Cummins turbo dsl, well maintained, 200k miles, \$17,000. 717-543-2055

1995 IH 466 dsl, 14ft reefer box, under CDL, 25,500 GVW, runs good, as is, around 200k miles, \$11,000. 717-543-2055

Blocky 350 4 bolt main chock, \$200, pr 194 recondition heads, \$250, new in box 600 Edelbrock carb \$200, all \$600. 814-667-3637

42' Ravens Flatbed Air Ride Slide Tandem Trailer, Very Good Condition.....\$4,200 obo

856-935-3938 • 609-868-6588



Isuzu, 1988, 5 spd., 12 ft. van, runs well
\$4,000 570/546-5574

MISC:

- Various Stainless Steel Tanks, Under 3000 Gal Call for Price
- 3/16" x 20' Pyramid Bending rolls \$3,500
- 6,000 Gal Stainless Steel, Vertical \$3,200
- White Cedar Fence Posts, prices per skid:
2" - \$2.75 3" - \$3.25 4" - \$4.50 5" - \$6
- New & Used Gear Boxes, various ratios call for price
- 20,000 to 48,000 gal. Epoxy Lined Tanks .25c/gal.
- 12" Air Locks \$750
- Roller, Walk-behind, Hatz Diesel, Vibrator \$1,500
- Concrete Saw, 16" Diamond blade, gas powered, w/water attachmt. \$1,600
- 4 Ton Machinery Rollers \$55 ea.
- 24 Qt. Dough Mixer \$1,250

WOODWORKING MACHINERY:

- Vollmer Band Saw Blade Grinder, model LLL - senior \$750

FORKLIFTS:
Good selections of used forklifts from 3,000-8,000 lbs

- 6000# Yale, Pneumatic Tire (Dual), 2-Speed Auto, Triple Stage, 1980 \$6,900
- 5000# Clark, Cushion Tire Triple Stage, Side Shift - 1990 \$5,200
- 8000# CAT, Cushion Tire, std. mast, manual transmission \$3,900
- 8000# Hyster, Cushion Tire, std mast, manual transmission \$2,800
- Genie Scissor Lift, 26 ft. work height, 1999 mdl., like new \$5,500
- 5000# Nissan, pneu. tires, std. mast, automatic, Diesel \$5,500
- 3000# Clark Triple Stage, Side Shift, Cushion Tire \$3,100

METAL:

- Shears, Cincinnati, 1/2"x10", w/power back gauge \$16,500
- Jig Bore, Fosdick Sn. 2222124, digital readout, NICE! \$1,500

CEDAR LOG HOMES:
Build yourself. Call for log prices

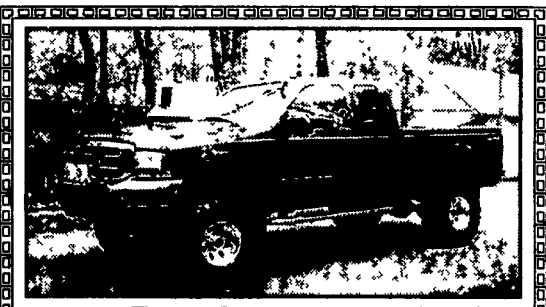
Chevy Engines New & Reman
Tractor, Backhoe, Loader,
Engines Rebuilt
717-762-6415



1997 TAHOE LS 4x4, Loaded,
130K, Good Condition. Runs Great.
\$8,950 717-586-0399





1984 International S1900 model, w/Int'l DT466 engine, 33,000 GVW & 20 ft reefer box with newer roll up door, engine & reefer runs good.
\$3,500 obo. 717-859-3810



2001 F-250 Super Duty Diesel,
4-WD, 1600 orig. Miles.
Call for Info.
610/965-5266

FOR SALE

 <p>1999 Sterling Tri-Axle Dump Cat 3406 475 HP, 18,000 FA, 46,000 RA, Double Frame, 17.5 Alum. Body</p>	 <p>1997 Kenworth T-800 Tandem Dump 300 HP Cat 16' Steel Box, 20,000 FA, 44,000 RA, Dual P/S, Room for Lift Axle</p>
--	---

Bobby Gerhart's
TRUCK WORLD
717-273-7995

Spa/Hot Tub luxury model w/options, never opened, still in wrapper, full warr. retails to \$9300 sell \$3750. 717-944-4553

33 RECREATIONAL VEHICLES

Radio Control Airplanes, 1-Kadet 12'os'61FS engine, 2-Telemaster 40 'os'48FS, 2 radios & 2 extra wings \$500/Both. 856-809-9383.

Wood heat. Clean, safe & efficient Central Boiler OUTDOOR WOOD FURNACE. Heats multiple buildings. Available in carbon steel & titanium enhanced stainless. Kenneth Stauffer, 570/539-4606, 888/539-4606

Big Joe hyd forklift, 2000 lb cap, like new condition, \$1,150 obo. 215-968-1812

Hot water Van Wert stoker furnace, 717-786-1141.

York Co. 10x50 Mobil Home, 2 BR, gd. cond. \$1,200/OBO, Call 717-927-6559 or 717-858-6203 anytime. Ask for Debra or Mary.

2000 HONDA XR100 dirt bike, \$1,525 OBO. 717-653-9662.

14' alum. John boat w/ anchors, fold-down seats, rod holders, battery case, oars. Boat trailer w/ winch & new trailer jack. Elec. motor Mincota Mag 18TMX. 610-894-9813

2000 Coachmen 2000 37' Widebody slideout, CAC Sat dish, w/d hookup, Ex cond, \$17,500. 717-244-0728

34 AUTOS

1995 AstroVan, AWD, X1nd cab, 132,000 mi, VG cond, 717-589-7483.

1992 Ford Taurus L station wagon, 140K mi, 1 owner, family car, G cond, needs insp, \$1,000. 1-610-216-6024

'93 Ford Tempo, 4dr, V6 auto, PS, PB, cruise, tilt, air, 80,000 miles, black, \$1,800. 717-733-2873

RECREATIONAL VEHICLES

Porsche, 1973 Targa Classic, good condition, maintenance records. 610-678-3717

1950 Willys jeep stationwagon, G cond, \$4,500. 215-228-2882 days/ 610-489-3198 eve

96 Ford F 350 4x4, crew cab, 107,000 mi, no bed, white ext, tan int, well maintained, V-8 auto old, \$11,000. 610-273-2415

1996 Dodge Intrepid, 4 dr, 6 cyl, inspected, 74k, \$6000 obo. 410-877-7644



91 Dodge Grand Caravan
3.3 V6, 150,000 Mi., Very Good Shape
Asking \$2,100 OBO
717-354-3208

Hunter Computerized 4-Wheel Aligned w/Rack
Call Tom
717-263-9029

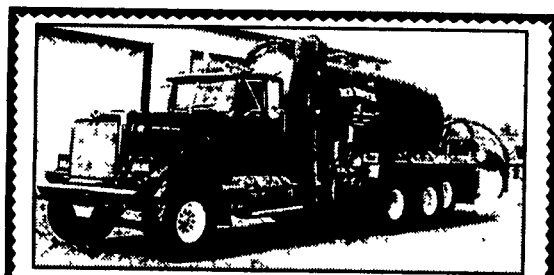
35 TRUCKS AND TRAILERS

1995 IH 466 dsl, w/reefer, works real good, well maintained, under 200k mile, under CDL, 25,500 GVW, 20ft box, \$18,000. 717-543-2055




1993 Toyota T100, Long Bed,
2 wheel drive, Air, Radio w/compact disc, Sliding window, Running boards w/tool box, Grill guard,
Leon Hershey 717-445-4568

72 Ford LN9000 w/new 3208T Cat, 250 HP, tande axle 10-spd., low miles, w/20' grain dump, nice truck ... \$10,500
610/562-4807



1988 Western Star Manure Spreader Truck, NTC 400 HP Cummins eng, 6 speed Allison trans, 2 speed, 46,000 lb rears, 46,000 lb Hend spring, 18,000 lb steering, dual 445/65/22.5 drive tires, single 445/65/22.5 steering tires 4800 gallon vac/press tank, 900 CFM pump, 2-8" loading valves, 10" side loading boom, 8" side spreading and 8" rear spreading valves, 4 Sunflower injector units (new 9-02) Overall width is 10 ft, 7,401 hours and 131,443 miles \$48,000 with injectors, \$42,000 without injectors, 717-738-1066

89 Ford Tri Axle Dump, 400 H.P. Cummins, 8 Spd. LL trans, 18' Steel Dump, 46,000 Rears, 18,000 FA, AC, Dual 6" Exhaust, Nice Shape. \$19,900/obo



96 Mac Frameless Alum. Dump Tri, 40'x102"x72" Alum. Wheels, 24.5 Tires, Extra Light Sealed 2-Way Gate, Coal Chute, Air Ride Susp., Individual Dump Valves, Extra Lights and Vibrator \$23,900/obo

CALL: 717-361-0145