

Special Note

Lancaster Farming reminds readers that market prices are the result of reports sent to the newspaper by various auctions or USDA reporting services. It would be impossible to check the accuracy of the approximately 115 markets that appear weekly. Editors have always been aware that inflated or inaccurate prices are of no service to anyone and have no place in this publication. Such reports are useless to our readers and take up vital editorial space.

Readers, though, who employ the services of an auction house might recognize incorrect reports from personal experience. When that occurs, please notify the auction house and send a copy, also, to our attention.

We thank you for your input and to auction houses for their cooperation.

Leola Produce

Leola, Pa
Report Supplied by Auction
June 10, 2003

ASPARAGUS: 1.00-1.40 BUNCH.
BEANS: GREEN 12.00-16.00 1/2 BU.
CAULIFLOWER: 9.00-10.00 10 CT. BOX.
LETTUCE: BUTTERCRUNCH, RED, ROMAINE, HEAD 11.00-14.00 12 CT. BOX.
ONIONS: 8.00-10.00 20 CT. BOX.
PEAS: SUGAR 22.00-26.00 10 LB. BOX, SNAP 24.00-27.00 10 LB. BOX.
POTATOES: WHITE 14.00-18.00 BASKET.
RADISHES: 6.00-9.00 12 CT. BOX.
RED BEETS: 12.00-16.00 20 CT. BOX.
RHUBARB: 10.00-14.00 15 LB. BOX.
STRAWBERRIES: 21.00-25.00 8 QT. FLAT.
TOMATOES: RED 28.00-49.00 25 LBS.
ZUCCHINI: 12.00-20.00 1/2 BU.
FLOWERS: BEDDING ANNUALS 2.00-4.75 FLAT, .10-1.00 POT; HANGING BASKETS 3.00-6.00; PLANTERS 3.00-7.00; PERENNIALS .50-1.75 POT.
FOOD PLANTS: VEGETABLES 3.00-9.00 FLAT.
SALE DAYS MON., 9:30 A.M., TUES., THURS., FRI., 9 A.M.

Finger Lakes Produce Auction

Penn Yan, NY
Report Supplied by Auction
June 4, 2003

ASPARAGUS: 1.10-1.20 LB. BUNCH.
EGGS: .50-80 DOZ.
ONIONS: .55-.70 BUNCH.
POTATOES: 3.00-8.00 50 LBS.
RHUBARB: .25-.50 BUNCH.
TOMATOES: 4.00-26.00 25 LBS.
FLOWERS: 1.00-13.00 FLAT, HANGING BASKETS 2.00-10.50, PLANTERS 1.75-27.00, POTS .05-7.50.
FOOD PLANTS: TOMATO PLANTS 2.00-6.75 POT.
FLOWER AND PRODUCE AUCTION MON., WED., FRI., 9:30 A.M. SHARP!

Kutztown Produce Auction

Kutztown, Pa.
Report Supplied by Auction
June 3, 5, 6, 7, 2003

APRICOTS: 7.50-8.00 FLAT, .60-1.65.
EGGS: .60-.95 DOZ.
LETTUCE: .30-.35 HEAD.
ONIONS: SPRING 40-.75 BUNCH, YELLOW 2.00-3.25 20 LBS.
POTATOES: WHITE AND RED 2.50-6.00 50 LBS., 2.00-3.00 FLAT.
RED BEETS: 1.00-1.10 BUNCH.
RHUBARB: .05-.70 LB.
SPINACH: 3.00-6.00 1/2 BU.
STRAWBERRIES: 27.00-31.00 8 QT. FLAT, 16.00-25.00 12 PINT FLAT.
TOMATOES: 7.00-9.00 15 LB. FLAT, GREEN HOUSE 9.00-20.00 20 LBS.
FLOWERS: HANGING BASKETS 1.50-9.00, LILIES 1.00-5.50, PLANTERS .40-12.50, SUNFLOWERS 1.00-1.50.
FOOD PLANTS: VEGETABLE FLATS .25-9.00, POTTED TOMATOES .10-1.20.
NURSERY STOCK: MISC. SHRUBS 2.00-18.00, ALBERTA SPRUCE 7.00-14.00, ARBORVITAE 3.00-30.00, AZALEA 1.75-6.00, BOXWOOD 9.50, BURNING BUSH 12.00-15.00, HOLLY 3.00-20.00, JUNIPERS 3.75-15.00, ROSES 2.00-6.00, TREES AND FLOWERING TREES 6.00-190.00, EVERGREEN TREES 10.00-55.00, YEW 4.00.
NEXT WEEK'S SALE DSATES TUES., THURS., FRI., SAT.

Morrison Cove Produce Auction

Roaring Spring, Pa.
Report Supplied by Auction
June 3 and 5, 2003

APPLES: 4.50-5.50 1/2 BU.
ASPARAGUS: 7.50-11.50 10 LBS.
STRAWBERRIES: 2.00-3.25 QT.
FLOWERS: ANNUAL FLATS 1.00-9.00; BASKETS 1.00-16.00; PLANTERS 4.00-18.00; ANNUAL POTS .10-2.25; PERENNIAL POTS .25-5.00; GERANIUMS .55-2.00; ROSES 3.00-8.00.
SALE DAYS NEXT WEEK TUES. AND THURS.

Kirkwood Produce

Kirkwood, Pa
Report Supplied by Auction
Tuesday, June 10, 2003

ASPARAGUS: 1.50-1.60 BUNCH.
LETTUCE: ROMAINE .25-.35 HEAD.
ONIONS: SPRING 8.00 20 CT.
PEAS: SUGAR 13.00-18.00, HULL 6.00-11.00 1/2 BU.
RHUBARB: .25 BUNCH.
SPINACH: 7.00 BU.
STRAWBERRIES: 21.00-22.00 8 QT. FLAT.
TOMATOES: 11.00-15.00 25 LBS.
FLOWERS: ANNUAL FLATS 2.00-9.00, DAHLIAS 3.50 POT; ANNUAL POTS .25-.90 EACH; GERANIUMS .25-1.25 POT; HANGING BASKETS 2.00-7.50; CUT FLOWERS 2.50-3.00 BUNCH.
FOOD PLANTS: TOMATO PLANTS 6.00 FLAT.
NEXT WEEK'S SALE DAYS TUES. AND THURS., 9 A.M.

Lebanon Produce Auction

Reistville, Pa.
Report Supplied by Auction
June 5-10, 2003

ASPARAGUS: 1.40-1.80 BUNCH.
ONIONS: SPRING .15-.65 BUNCH.
PEAS: SUGAR 27.50-30.00 BOX.
POTATOES: WHITE 2.25 20 LBS.
RADISHES: .40-1.20 BUNCH.
RHUBARB: 4.00-7.00 BOX.
SPINACH: 1.10-4.00 BOX.
STRAWBERRIES: 2.70-4.00 QT.
TOMATOES: LG. 12.00 10 LB. BOX, MED. 30.00.
FLOWERS: FLATS .25-6.00, .25-4.00 POT; BASKETS 1.00-5.25.
SALE DAYS NEXT WEEK TUES., THURS., FRI., 9:30 A.M.

Snyder County Produce Auction

Port Trevorton, Pa.
Report Supplied by Auction
June 12, 2003

APPLES: 4.00-6.00 1/2 BU.
ASPARAGUS: .60-.80 1/2 LB. BUNCH.
BROCCOLI: .75-1.20 HEAD.
ONIONS: SPRING 20-.35 BUNCH; YELLOW 9.50-11.00 50 LBS.
PEAS: SUGAR 1.90-2.85 L.B.E. 4.00 BU.
POTATOES: RED 6.00-7.00, WHITE 6.00-8.00, BOTH 50 LBS.
RADISHES: .20-.35 BUNCH.
RED BEETS: 1.50-1.85 BUNCH.
SPINACH: 4.00-6.00 1/2 BU.
STRAWBERRIES: 2.30-3.00 QT.
TOMATOES: RED SM. TO LRGE. 18.00-22.00 25 LBS.
FLOWERS: BEDDING ANNUALS 1.00-3.00 FLAT; HANGING BASKETS 2.00-4.00; PERENNIALS 1.00-2.50.
NURSERY STOCK: SHRUBS 3.00-7.00; TREES 10.00-35.00.
SALE DAYS MON. AND FRI., 10:30 A.M.

Pa. Produce Summary

Report Supplied by PDA
June 6, 2003
Wholesale Prices Only
ASPARAGUS: 1.00-1.50 LB.
BROCCOLI: .75-1.00 HEAD.
CABBAGE: 9.00 50 LBS.
CAULIFLOWER: .90-1.00 BU.
LETTUCE: HEAD 7.00-9.00, LEAF 7.00-12.00, BOTH 12 CT., ROMAINE 20.00-22.00 18 CT. BOX.
ONIONS: 7.00-12.00 10 LBS.
PEAS: SUGAR 26.00-35.00, SNAP 30.00-35.00, BOTH 10 LBS.
RADISHES: 3.00-6.00 BOX.
RED BEETS: 5.00-8.00 1/2 BU.
RHUBARB: 45-.65 LB.
SPINACH: 6.00-10.00 BU.
SQUASH: YELLOW 10.00-14.00 1/2 BU.
STRAWBERRIES: 18.00-28.00 8 QT. FLAT.
TOMATOES: 17.00-37.00 25 LB. BOX.
ZUCCHINI: 9.00-16.00 1/2 BU.

Kutztown Produce Hay Auction

Fleetwood, Pa.
Report Supplied by Auction
Saturday, June 7, 2003
Hay—Straw—Grain

28 LOTS.
ALFALFA HAY: 175.00-205.00.
GRASS HAY: 70.00-160.00.
MIXED HAY: 95.00-130.00.
TIMOTHY HAY: 135.00.
WHEAT STRAW: 75.00-100.00.
OAT STRAW: 80.00.
SMALL STRAW BALES: 1.10-1.20.
OATS: 2.30-3.00 BU.
NEW HAY: WET 40.00.
SALE EVERY SAT., 9 A.M.

CHARVIN FARM

ag plastics

800 352 3785

717 314 4521

Bags
Baggers

Bale Wrap
Bunk Covers

Twine
Netwrap

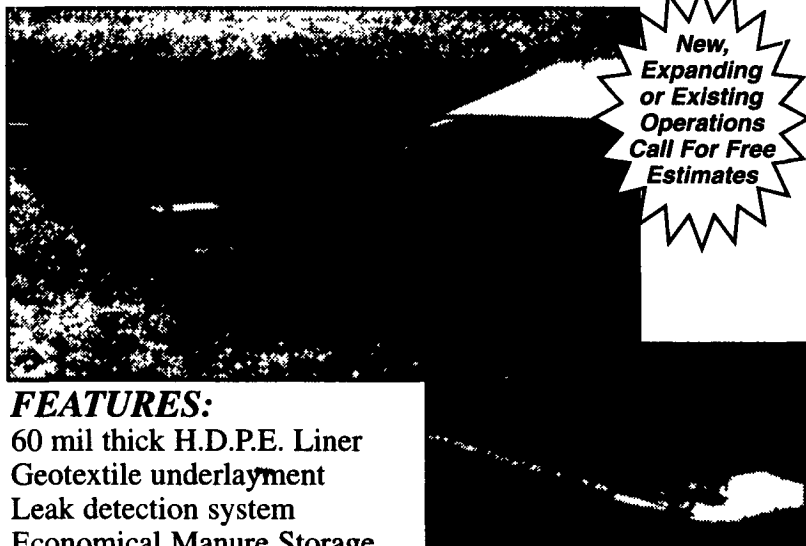
SILOGRASS

Bale Wrap

- Snap & Tear Resistant
- High Elasticity - Stretch in all directions
- High Tack Level which ensures Quality silage

SITE EXCAVATION

Installation of H.D.P.E. Liner Systems for:
Dairy, Hog, and Veal Manure Storage Facilities
Golf Course and Recreational Ponds



New,
Expanding
or Existing
Operations
Call For Free
Estimates

FEATURES:

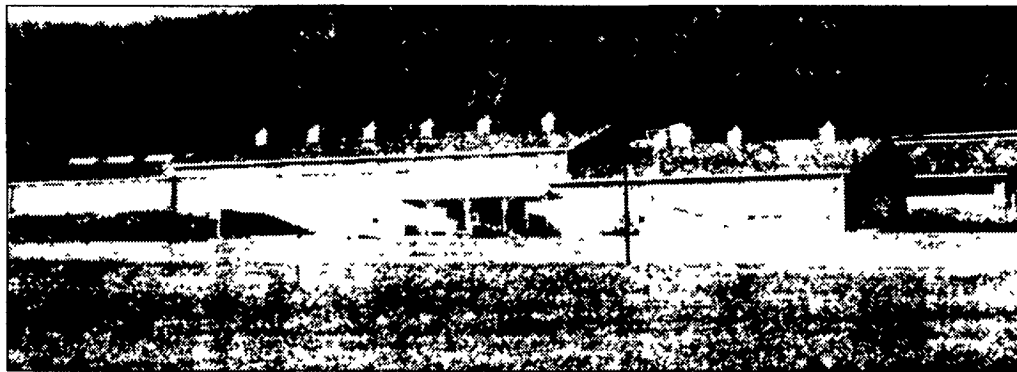
60 mil thick H.D.P.E. Liner
Geotextile underlayment
Leak detection system
Economical Manure Storage
Seals manure in, subsurface water out
Concrete ramp for manure agitation and pumping



1942 Camp Swatara Road • Myerstown, PA 17067
Ph: (717) 933-8853 • Fax: (717) 933-8078

We Specialize in Building, Remodeling, and Automating Dairy Facilities...

SCHRACK FARMS
LOGANTON, PA



D-20 Herringbone Parlor, Basement Parlor and 3 Bay Milk Tanker Garage.

Featuring instant cooling of milk,
and tunnel ventilation by Empire

— We Are Builders/Equipment Dealers —

- We offer total systems design with parlor automation a specialty.
- We build complete facilities and offer many years of experience.
- We also do repairs and remodeling, offering plumbing and electrical services.
- We are dealers for the following equipment:
 - Norbco Barn Equipment, Alley Scrapers, & Curtain Systems
 - Tunnel Ventilation Systems
 - Cow Mattress

Give Us A Ring If You're Thinking About A Project Or
Need Advice On Ventilation, Milking Systems Or Animal Housing
Give Us A Try — Have It Knisely Built

We offer full service on our products 24 hours a day.

Knisely **BUILT**
AGRICULTURAL CONSTRUCTION

Bill Knisely
814-692-4110

14 Cedar Ridge Drive
Port Matilda, PA 16870

Arnold Decker
717-369-3607