

1A CONSTRUCTION EQUIPMENT

2 to 5 Ton overhead cranes & jib cranes & assorted eye-beams. 267-278-5010

Welders, (2) Miller Bialarc 250, \$450 ea. 717-432-3235

New JD 110 backhoe, \$36,500-will consider trade in, 717-367-9773

AC D14 loader & backhoe, runs good, \$3,500. 570-784-9192.

Hobart diesel welder model DCC353P ac/dc, equipped w/Perkins 4-cyl. diesel power, 6100 hrs, \$2200. 89 GMC Top Kick cab only, air brake equipped, \$1250. 814-946-9885

Gehl 4625 D skid loader, cab, 2 buckets, aux. hyd., uni-hookup, nice, \$10,800. 717-838-3899

100 CFM Ingersol Rand air compressor, make offer, 717-656-8003

Skid Loader, 785 NH Perkins dsl, good shape, recent eng. overhaul, new drive chains, good hyd system w/1 set of forks & 1 bucket, \$10,500. Call 410-329-6791.

Mitsubishi 120 excavator, good condition, \$15,000; Hitachi 100 series excavator, 1993, \$17,000. 215/783-1361, 215/860-2524

Cat D9G dozer, cab, ripper, U-blade, good runner, job completed, \$14,500. 814-442-5614.

Flat Allis 7G Series B track loader, VG UC, runs & operates excellent, 116hp, \$11,000 OBO. 610-285-6443 before 4pm

Hydramac 2650 skid loader, 85hp gear driven outriggers. This machine pushes like a little dozer. 570-449-9977

(2) CAT GEN sets, 180KW w/100 hrs, 315 KW w/200 hrs, auto trans switches to go w/ea set. 717-527-2573.

Cat 12-E Grader hyd, side shift, 14.00x24 tires, scarfire & aux. hydraulic valve, all in good working cond, \$9,800. 610-932-5245.

Industrial Emglo air compressor, 200psi, 3 ph, 5hp motor, good cond, \$600 neg. 717-292-5403.

Cat 941B 374 hrs, on rebuilt & undercarriage, needs repaired or for parts, 717-543-0906 eves.

1987 Cat 215 track hoe, s/n 9YB2435, Labounty 110 hdr grapple, 28" pads, 36" bucket, \$23,000. 1989 Cat 215C track hoe, s/n 4HG01339, Labounty 110 hdr grapple, CP40 pulverizer, 28" pads, 42" bucket, \$26,000. 1987 Mac tractor R680 model, tandem wet-line, \$6000. 215-357-1940

15hp, 3ph Champion air-compressor w/air dryer, \$3,500. Like new, 610-207-3013

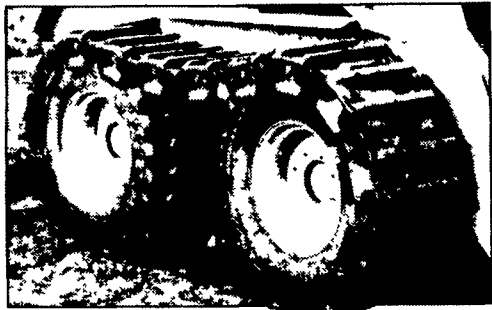
SYMONS FORM PANELS

Various Sizes • New & Used

Other concrete form accessories available.

Call 610-366-1646

GROUSER PRODUCTS TRACKS for Skid-Steers



- Improve traction
- Reduce ground pressure
- Run-loose design
- Built-in length adjustment
- Install in 30 min.. remove in 10 min

Call for Sizes and Prices

ABC GROFF 110 South Railroad Ave. New Holland, PA 17557 **800-346-8319**

visit our website: abcgroff.com

Monday thru Friday: 7:30-5:00; Saturday 7:30-Noon Other Times By Appointment

LOTS OF ATTACHMENTS IN STOCK! When you need it NOW! Call us!

Clamp-On Bucket Forks

1000 lb. Cap	\$397
2000 lb. Cap	\$425
3000 lb. Cap	\$625
4000 lb. Cap	\$735
6000 lb. Cap	\$997

3-Point Mount Forks

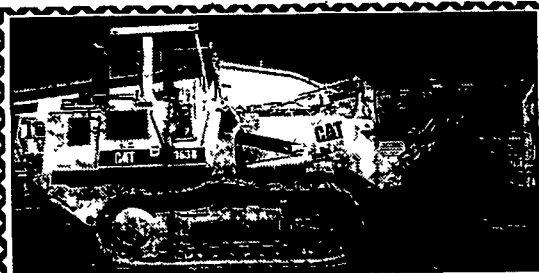
1200 lb Cap	\$225
1500 lb Cap	\$298

Skid Steer Loader Forks

42"	\$690
48"	\$695

For All Current Major Mfg. Brands Of Loaders

ABC GROFF 110 South Railroad Ave. New Holland, PA 17557 **(717) 354-4191** Mon. Thru Fri. 7:30-5:00 Sat. 7:30-Noon Other Times By Appt.



1995 Caterpillar 963B Crawler Loader \$68,000

Heavy Equipment Loader Parts

Rt. 22 Grantville, PA (717) 469-0039 help10070.com



Case 850C Crawler Loader
Good UC Removeable Backhoe.
\$18,900
717•586•0399

Mid Maryland Rentals, Inc.

8865 Baltimore National Pike Phone: (301) 371-5500
P.O. Box 186 Middletown, MD 21769 Fax: (301) 371-9299 **Financing Available**

<p>• 1984 John Deere 690B, 36" bucket, standard stick, joystick controls, v g undercarriage & condition, work ready \$19,000</p>	<p>1988 Case 1155E, OROPS/sweeps, 4 in 1 bucket w/teeth, v g undercarriage & condition, work ready \$23,000</p>	<p>1988 Cat 953C, cab/ac, gp bucket w/teeth/quick coupler/forks, v g undercarriage & condition, work ready, 3,300 hrs \$85,000</p>
<p>Telescopic Forklifts, Gehl, JCB, Lull, Terex, 5,000-8,000 lbs, from \$16,500</p>	<p>1987 Cat 953LGP, Factory cab, gp bucket w/teeth, v g undercarriage & condition, work ready \$38,500</p>	<p>1998 Case 580L, cab, 4WD, standard hoe, aux. hyd , 24" bucket, v g cond , \$28,500</p>

• 1989 Case 450C, long track, orops/sweeps 6 way blade good undercarriage, v g condition work ready **\$18,000**
 • 1987 Cat 950B, cab, gp bucket w/boce v g paint & condition, rebuilt transmission **\$35,000**
 • 1985 Dresser TDBE, orops, 6 way blade fresh paint good undercarriage work ready **\$18,500**
 • 1987 Komatsu PC 200LC3 30' bucket, good undercarriage & condition, work ready **\$19,000**
 • 1996 Rammax RW14D3-FMR, 33" padfoot trench roller v g cond work ready **\$6,500**
 • (2) Scattrak 1500D, gp bucket auxiliary hydraulics Kubota turbo diesel, v g tires & condition, 700 hrs **\$13,000 ea.**

BN Company

Somersville, NJ
All Types of Surplus
Days • 908•218•9492
Eves • 908•218•9736

<p>Ferguson 30 Parts Tractor \$450</p>	<p>New Firestone 18 4-26 All Traction Tires \$300 Set</p>	<p>Jacobson Mower, Gas Powered (No Deck), Parts or Repair \$500</p>	<p>Cletrac Collector Dozer, Gas, Straight Blade Good Solid Machine \$3,000</p>
<p>Allis Chalmers 148 Gas Power Unit with Hand Clutch \$450</p>	<p>MF 20-D Diesel Tractor Parts or Repair (Missing Parts) \$2,100</p>	<p>IH 140 High Crop Tractor, Gas, Good Cond \$3,000</p>	<p>Set of New 13.6-24 on I-H 8 Lug Rims 4x4 \$300</p>
<p>GMC Truck with Guard Rail Post Pounder, Gas, Municipal Unit, Low Miles \$8,500 Call</p>	<p>1988 Ford F-350 Diesel Sweeper Truck, Tymo 210 Diesel on Back, Municipal Truck, Only 22,000 Miles \$7,200</p>	<p>Toro Groundsmaster 345 Gas, 72" Cut, PS, Hyd Drive, Good Cond \$3,200 Others avail \$1,500 and up</p>	<p>Toro 220-D Diesel Mower (No Deck) Complete \$800</p>
<p>Royer 262 Topsoil Plant V-4 Gas, with Trash Conveyor \$8,200</p>	<p>IH 585 Diesel Tractor with Arm Reach Mower Very Good Cond 967 Hours \$12,500</p>	<p>New Bodine Stump Digger and Splitter, Fits Excavators 30 to 45,000 lbs Class \$2,600</p>	<p>IH F-12 Collector Tractor with One Bottom Plow, Nelson Engine, Very Nice \$2,300 Serial #948</p>
<p>White Diesel Power Unit with Fuel Tank Hand Clutch Runs Good \$1,000</p>	<p>Clark Electric Forklift with Charger, 3 Stage Mast \$2,600</p>	<p>Ford Model 1900 Diesel Tractor, 3 ph, PS, Rops \$3,800</p>	<p>Case Collector Tractor on Steel Propane Powered \$1,700</p>

YANMAR PARTS, SALES & SERVICE

VI035-2 EXCAVATOR

- Unbeatable Quality and Performance
- True Zero Tail Swing
- Standard Hyd. Quick Coupler
- Large Comfortable Operating Space
- 7716 Lbs., 10'6" Digging Depth
- Ask Us About a 3 Hr. Demo
- Low APR Financing

Also In Stock B22-2B Excavator

Also available for rent.
For more information on all rental equipment, please call or visit our web site

(717) 354-4191 (800) 346-8319
110 South Railroad Ave., New Holland, PA 17557
Monday Thru Friday 7:30-5:00, Saturday 7:30-Noon
Other Times By Appointment
Visit our Web Site www.abcgroff.com

ABC GROFF **YANMAR**

DEDICATED TO QUALITY, DRIVEN TO KEEP YOU SATISFIED