

Salesmen:
Randy Smith
Bill Ryland



WENGBERS OF MYERSTOWN FARM MACHINERY

(717) 866-2135

WWW.WENGBERS.COM

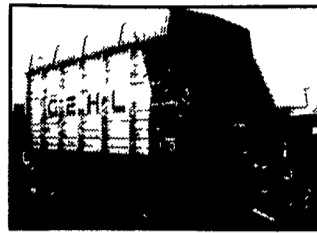
WOODS

MYERSTOWN, PA 17067

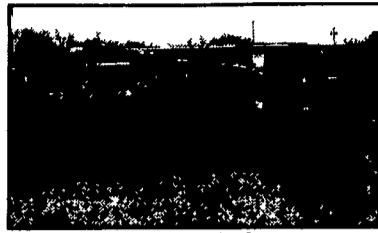
814 S. COLLEGE ST. (ROUTE 501)



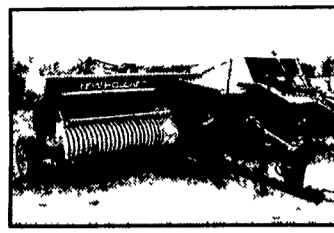
Brillion 8' Packer/Seeder



Gehl 980 16' forage wagon
 1268 Gehl - 12.5Lx15 w Roof Light Kit



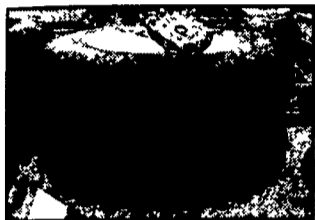
JD 1460 MoCo
 9'9" cutting width, 540 PTO, disc mower w/conditioning rolls, good



New Holland 316 baler w/75 thrower



Woods 15' 3180 Batwing Mower
 new, equipped with aircraft tires, 540 PTO, belted shielding, lift and wing



JD 18.4x38 Duals
 off JD 7400, 79.5 MM axles, 10 bolt hubs, very good \$1,650



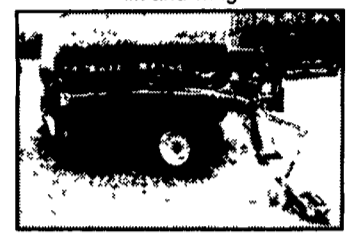
Kawasaki 2510 4x4 Mule
 4x4 Gator PreOwned diesel engine, electric dump, roof



Badger 16' forage wagon
 w/Badger, tandem gear



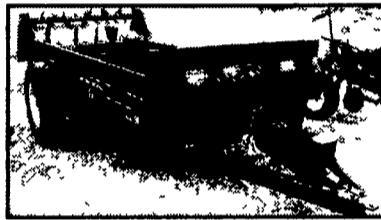
Case IH 885 4x4 w/loader
 76 hp. 2 sets of remotes 3,400 hours



John Deere 750 10' drill
 very nice drill, has Yetter markers



(4) Flail choppers,
 NH 36, NH 38, JD 16A and Gehl 72



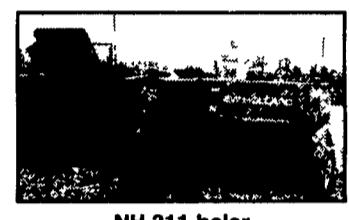
International 550 spreader
 216 cu ft. capacity, top beater, nice



J.D. 420 - Excellent 241 Hrs



Deutz Allis 11' rotary rake
 model KS 3 37, very good condition



NH 311 baler
 with Thrower

COMPACT TRACTORS

- Kubota L4310 4x4 w/loader
- Kubota L2900 4x4 w/loader
- Ford NH TC21D 4x4 w/blade
- JD 4300 4x4 w/loader & backhoe
- JD 455 w/awes
- JD 322 w/46" deck & front blade
- JD 355D w/48"

MANURE SPREADERS

- Ford NH 145 spreader
- NI 14A ground drive
- JD R ground drive
- IH 550 Spreader
- IH 530 Spreader (nice)
- Pequea 50P small PTO spreader

DISC HARROWS

- AC 13' hyd. fold wing disc
- AC 6' snap coupler disc
- Case 8' offset disc
- Case 8' transport disc
- Ford 5' and 6' 3pt disc
- IH 7' offset disc
- IH 8' transport disc
- IH Cub drag disc
- IH 10' 370 disc
- IH 12' 500 disc
- IH 12' 770 offset disc
- IH 5' 1pt fast hitch disc
- JD 4 1/2' offset drag disc
- Several JD 6', 7' and 8' drag discs
- 2) JD 8' transport disc
- JD/Killefer 6' offset
- Kewanee 9' transport disc
- Kewanee 12' heavy rockflex
- Krause 10' offset
- Krause 13' offset
- MF 10' offset
- MF 11' offset
- Miller 8' offset
- Oliver 8' transport disc
- Taylor Way 9' rockflex
- Several Small 3pt Discs, 5', 6' & 7'

GRAIN DRILLS

- Case IH 5300 21x7 DD w/grass & press w/grain drills
- IH 510 13x7 DD w/grass w/grain drills
- JD 8200 21x10 DD soybean drill
- Great Plains 10' no till
- JD 750 10' no till w/dolly

TRACTORS

- JD 3055 w/cab, 100hp, nice
- JD 2550 w/loader
- JD 2750, 75 hp
- JD 4240, 110 hp, cab, air, quad
- JD 4020, 95 hp
- JD 2510 gas tricycle
- JD 3020 70 hp, gas, utility
- JD 302, 38 hp, diesel, low utility
- JD 301, 38 hp, gas, low utility, reverser
- JD 50 w/WF, PS, 3 pt., loader
- JD 420, try, 3 pt.
- JD AR, nicely restored
- 4) JD B, poor to good, 1 is unstyled
- 2) JD H, repainted
- Case IH 885 4x4 w/loader
- Case IH 585 4x4 w/loader
- Case IH 695 w/loader & canopy
- Case IH 695 w/canopy, lo-pro tires
- Case IH 265 offset w/cultivator
- IH 674, 60 hp, diesel, nice
- IH 330, FH, TA, good cond.
- Ford 5000, 55 hp, gas, nice
- MF 135, gas, P.S.
- Farmall Cub w/your choice of attachments
- Farmall 140 mowers & cultivators available

SOIL SAVERS & CHISELS

- IH 6000 9T soil saver
- IH 7T 3pt chisel
- Dunham 8T 3pt chisel
- JD 714 7T soil saver, sharp
- MF 7T soil saver
- MF 5T 3pt chisel
- Hesston 9T soil saver
- Landoll 9T soil saver
- Landoll 5T 3 pt chisel
- Blanton 7T 3pt chisel
- Bush Hog 8T 3pt chisel

HAYBINES

- JD 1460 Discbine, 9'9" cut
- Case IH 1190 7' Haybine, (sharp)

BALERS and RAKES

- Case IH 8420 small round baler
- New Idea 484 round baler
- NH 268
- NH 311 w/thrower
- NH 316 w/thrower
- NH 68 and 69
- Deutz 11' rotary rake
- Deutz 13 1/2' 4 star tedder
- Ford NH 258 hyd drive rake (nice)
- NH 258 hyd drive rake
- Ford NH 57 3pt hay rake
- JD 350 hay rake
- NH 258 w/dolly wheel

ROTARY and SICKLE MOWERS

- NH tandem rake hitch
- Woods 3180 15' Batwing
- Woods BW180 15' batwing
- Woods 9180 15' turf batwing
- Woods 208 8' pull Type
- Woods 1260 10 1/2' pull
- Woods 7' 3 pt. Brushbull
- Woods 5', 6' and 7' rear discharge
- Woods 59 for Cub & A
- IH 5 1/2' Pull Rotary
- JD 6' Pull Rotary
- Land Pride 10' Rotary Mower
- Rhino 10' rotary mower
- Bush Hog 8' Pull Offset Mower
- King Kutter 5' 3 pt., 6' 3pt. Rotary
- Cub Sickle Mower
- JD 350 9' 3pt Sickle
- JD 50 Side Mt. Sickle
- MF 7' 3pt sickle
- IH 7' Semi Mount Sickle

CORN PLANTERS

- 6) JD 71 ground drive units
- IH IR 1pt FH Planter

CULTIPACKERS & MULCHERS

- Brillion 14' cultimulcher
- Hugo 14' roller/harrow combination
- Brillion 10' packer w/end transport
- Brillion 8' & 9' packer
- 4) Brillion 12' packer, 2 w/end transport
- JD 12' packer
- JD 12' cultimulcher
- Dunham 10' & 12' Packer
- Kewanee 10' cultimulcher

MISCELLANEOUS

- Care Tree 3 pt tree spayd
- CareTree 501 s/s tree spade
- Polaris 400L 4x4
- Kawasaki 2510 mule
- Kawasaki 2510 diesel mule
- 2) JD 6x4 diesel Gator
- Zimmerman 16' skeleton elevator
- Killbros 475 grain cart
- 18.4x38 and 20.8x38 Duals
- Axle Duals to Fit JD 7400
- 52" Woods 3 Pt. Rototiller
- CIH #50 12 1/2' Stalk Chopper
- JD 16A Flail Chopper
- NH 38 Flail Chopper
- Gehl 72 Flail Chopper
- Brillion 5'6" 3 pt. seeder
- 2) Brillion 8' packer/seeders
- Degelman Rock Picker
- 16' hay rack wagon
- Cub & Super A cultivators
- Gehl 980 forage wagon
- 16' & 18' skeleton elevators
- Badger B-16 forage wagon
- Several Gravity Bin Wagons
- Woods 6500 & 7500 3 pt. backhoe
- Bobcat 453 diesel skid loader