

7511 Allentown Blvd.
Harrisburg, PA 17112

**AFFORDABLE
CARS AND TRUCKS, INC.**

717-652-1925
FAX 717-652-4888
Hours: Mon. & Tues. 9-9
Wed. thru Sat. 9-6

**75 TRUCKS
IN STOCK**

"You Gotta Believe!!"

New Exit #72A, Rt. 81 N; Rt. 22 East of Harrisburg; 3 Miles North of Hershey Park

99 FORD F250 XLT 4X4,

Super Duty Crew Cab, Longbed, 5.4 Triton, AT, AC, PW, PLD, Tilt, Cruise, Extra Sharp, 100,000 Mi
\$15,995



96 FORD F250 XLT 4x4 EXT. CAB, LONGBED



7.3 Powerstroke, AC, PW, PDL, Tilt, Cruise, ROPS, 5-Speed, 100,000 Mi, Extra Clean Truck!
\$15,955



93 CHEV 2500 SILVERADO SUBURBAN
4x4 350V8 3/4 Ton, AT, AC, Dual AC + Heater, 3rd Seat, Tailgate 8600 GVW with Tow Package Rebuilt Trans with 3 Year Warranty 106K, Clean Vehicle
\$8,500



96 DODGE RAM 2500 4X4 LARAMIE SLT
AT, AC, PW, PDL, Tilt, Cruise, P Seat, Only 80,000 Miles This Truck is Showroom Cond Looks Like It Was Never Driven!
\$13,500



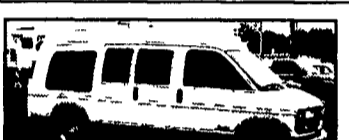
96 FORD F250 XL 4x4
7.3 Powerstroke DSL 8600 GVW, 5 Speed, Air, Real Nice Truck, I'd Say Even Showroom Condition, 100,000 Mi
\$12,500



95 FORD F350 XLT CREW
Dually 2WD 7.3 Powerstroke, 5-Speed A/C All Power Equipment, Nice Clean, Black Body! 170K
\$10,995



99 FORD F250 XLT 4x4 SUPER DUTY QUAD CAB
Longbed 7.3 Powerstroke, AT, AC, PW, PDL, Side Steps + Rhino Liner Mint Showroom Condition, 112K
\$18,995



97 CHEV EXPLORER CONV. VAN
350 Vortec V8, AT, Dual AC, TV, VCR, Too Many Extras to Mention 107K Extra Sharp In & Out
\$10,500



00 DODGE RAM 2500 4X4 SLT LARAMIE QUAD DOOR,
Longbed Cummins Turbo DSL, AT, AC, PW, PDL, Leather Interior, This Truck is All Black & Like New, 102K
\$19,995



98 DODGE RAM 2500 4X4 EXT. CAB
Quad Door, Longbed, Cummins Turbo, AT, AC, PW, PDL, Tilt, Cruise, Only 90K Super Sharp Truck! All Green!
\$17,995



97 CHEV 3500 4x4 H.D. CHEYENNE
350 Vortec, 9,000 GVW, AT, AC, Stereo, All Black & Very Clean 130,000 mi
\$10,500



96 JEEP GRAND CHEROKEE 4x4 LAREDO
6 Cyl, 100,000 Mi, AT, AC, PW, PDL, Tilt, Dk Green
\$6,500



96 DODGE RAM 2500 4x4 SLT LARAMIE EXT.
Longbed, Cummins Turbo Dsl, 5-Sp, AC, PW, PDL, Cruise, Tilt, + More 200K All Dealer Maintained + Super Tight Condition, Looks New As Well!!!
\$12,500



99 GMC SUBURBAN SLT, SILVERADO, 4x4
6.5 Turbo DLS, AT, Dual AC, Full Leather, 3rd Seat, Only 70K All Black
\$17,995



95 FORD F250 XLT 4x4
Longbed, 5.8 V8 351, 5 Sp, 8800 GVW, Only 90K, AC, PW, PDL, Cruise + Tilt, Showroom Looking Condition
\$10,500



99 FORD F250 XLT 4x4 EXT. LONGBED
7.3 Powerstroke, AT, AC, PW, PDL, Cruise, Tilt & More! 130 K Near Perfect 1-Owner Truck!
\$17,500



99 DODGE RAM 2500 4x4 LARAMIE SLT
Cummins 24 V turbo dsl, 5-sp, AC, PW, PDL, Tilt, cruise, Well Cared For, 1-owner 100,000 mi
\$17,500



96 DODGE RAM 2500 4x4 LARAMIE SLT
Ext Longbed, Cummins DSL, 5-Sp, AC, Banks Power Pack, Towing & other options Truck Looks + Runs Like New!! 170K
\$15,995



86 CHEV SILVERADO 1500 4X4,
V8 - 350, AT, AC, PW, 80K No Rust, Nice Clean Truck!
\$4,995



95 FORD F150 XLT 4x4
6 Cyl., 5-Sp, AC, Full Power, 2 Tone Paint, Very Clean 2 Owner Local Truck 130K, 27 MPG's
\$6,495



89 FORD F150 XLT 4x4
302 V8, AT, AC, PW, PDL, Tilt, & More 130K Local, Clean Truck!
\$3,995



99 FORD F350 XLT CREW 4x4
Super Duty, Shortbox, 7.3 Powerstroke, 6-Sp, AC, PW, PDL, Alloys Only 60K Totally New Cond
\$22,995

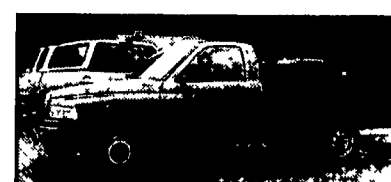


99 GMC YUKON SLT 4X4
350 V8 Vortec, AT, Dual AC, Full Power 99K, Like New
\$10,995

Disclaimer Mileage listed for your convenience only, it is approximate, not to be relied on as exact Sorry for any inconvenience



1997 GMC K2500 SL 4x4
350 Vortec, 5 Sp, A/C, Cruise, Tilt, Cas, Sliding Rear Window, 3.73 Ltr Shp Rear, 8600 GVW, Clean Local Truck 130,000 Mi, Blue Green
\$9,900



2001 Dodge 2500 ST 4x2
Cummins Turbo Diesel, AT, A/C, Cas, 4.10 Ltr. Slip Rear, 8800 GVW, Stahl Utility Bed, Local Owner, Blue 80,000 Mi
\$16,500

MARTIN'S AUTO SALES

1025 W. Main St., New Holland, PA 17557

(717) 656-6621

Woodcrest Motors

SPECIALIZING IN TRUCKS & VANS

1200 North Reading Rd., (Rt. 272) Stevens, (Lancaster Co.) PA 17578

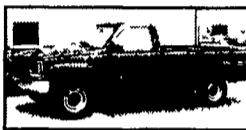
717-336-3130



98 DODGE RAM 2500 QUAD CAB
2WD 8' Bed V8 AT A/C 83,000 Miles White
\$9,995



01 CHEV 2500 H.D. CREW CAB
LS 4x4, Shortbed V8, AT A/C Most Options 85,000 Miles White
\$19,995



98 CHEV 2500 4x4 V8 AT A/C 8 ft
8600 GVW, 55,000 Miles Black
\$13,500



00 CHEV 2500 SILVERADO 4x4
V8 AT A/C 8600 GVW 82,000 Miles White
\$13,500



99 FORD F250 SUPERCAB 4-DR.
XLT V8 AT A/C Most Options 8,800 GVW 67,000 Miles Green
\$15,900



99 CHEVY SILVERADO 2500 4x4 EXTEND CAB,
3 DR 8 Ft Bed AT A/C Cass/CD, Most Options, 39,000 Mk Dk Blue
\$19,500

LEED Truck Center
402 S. Chiques Rd. • Harrisburg, PA
(717) 898-1200 • Fax (717) 898-1800
Consignment Welcome Financing Available
CALL: Ray Lead If We Don't Have It - We Can Find It!
JUNE SPECIALS



1994 WHITE GMC WG, 250 HP
Turbo, Tandem, 8 Spd, P/S, A/B, A/C, 56,000 GVW 22' Platform Dump & Hi Lift, Low Miles, New Insp, Very Clean
\$19,000



1986 PETERBILT CONV., Cummins
Turbo diesel, P/S, 9 Spd A/C A/B, 50,000 GVW 22' Stahl Platform Body with (4) 550 Gal Snyder Tanks Plus Hose & Meter System, Air Ride Susp
Priced To Sell



1996 IHC 4700, T444E Turbo Diesel, 5
Spd, P/S, Hyd Brakes, Cruise, Non CDL 25,500 GVW, 16' Duratite Van, Very Clean
Only \$10,900



1988 Mack C5300, 6 Cyl Turbo
Diesel, 7 Spd, P/S, A/B, 154" WB, New Insp, Very Clean
Only \$4,800



1988 Ford LN8000, 3208 Cat Diesel,
5 Spd, P/S, A/B, Plus PTO, 33,000 GVW, 18 C&C, Great Farm Truck
Must Sell!



1985 UD NISSAN CPC, 6 Cyl Turbo
Diesel, 5 Spd, P/S, A/B, 30,000 GVW, 20' C&C, Great Work Truck
Only \$2,900



1996 CHEVROLET C3500, 9 Stahl
Enclosed Utility Body Crew Cab, Dual Wheel, 10,000 GVW 6.5 Liter Turbo Diesel, A/T P/S, P/B, New Insp
Reduced \$7,900



1992-93 NPR ISUZU, 4 Cyl Turbo
Diesel, A/T, 14' & 16' Morgan Van Bodies 11,050 GVW, New Insp, Very Clean
Your Choice \$5,800



1990 Chevrolet 16' Grumman Alum.
Step Van, V8, A/T, P/S, P/B, Roll-up Door, Dual Wheel, 10,000 GVW, Insp Clean
Only \$3,500



1988 Ford F-350, 7.3 Liter Diesel, 5
Spd, P/S, P/B, 10,000 GVW, 12' C&C New Paint
Priced To Sell



1988 Ford F-350, 460 V8, A/T, P/S,
P/B, Dual Wheel, 12' Platform, Body with Wood Sides, Insp Clean
Priced To Sell!



85 GMC TOPKICK, 3208 Cat,
Diesel, 5 & 2 Spd, P/S, A/B, 30,000 GVW, 22' Platform Body With Clearfield Conveyor
Only \$3,500



1996 IHC 4900, DT466, Turbo
Diesel 5 Spd, P/S A/B 24 Van Body With L/G & CSD, 33,000 GVW Insp Very Clean
Only \$10,500



Storage Trailers 45 & 48' Van
Trailers, Swing & Roll-up Doors
Starting at \$800 & Up



1989 FORD F800, 7.8 Liter Turbo
Diesel, 5 & 2 Spd, P/S 33,000 GVW 18' Platform Body, Insp Clean
Only \$4,800