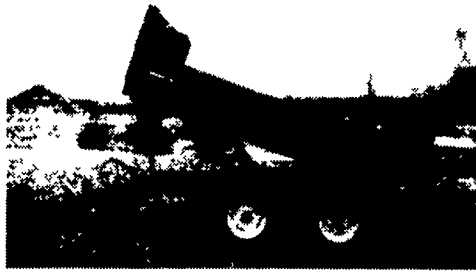


FARM DUMP TRAILERS

(Direct from the Manufacturer)

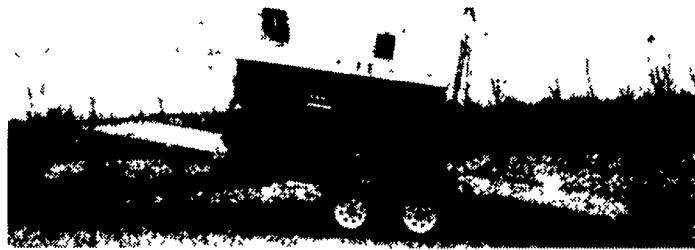
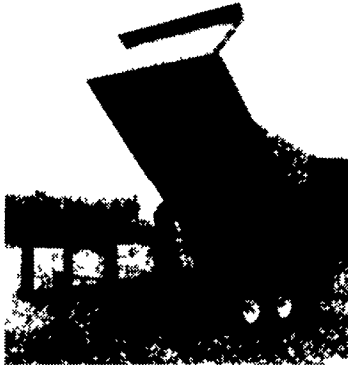


6-Ton Dump Trailer

- 10 ft x 7 ft.
 - Floating Tandem Axle
 - 3 ft Front, 3 ft Tailgate & Grain Chute
 - 16 in Extendable Sides
 - 10 ga. Floor & Sides
 - 11Lx15 Flotation Tires
 - 2-Way 4 in x 24 in Hydraulic Cylinder includes hoses
- \$3,200 U.S./delivered**

7-Ton Road Dump Trailer

- Fifth wheel or bumper type
- 16 ft. x 8 ft deck 3 ft front rack and pockets side & back
- D.C hydraulic pump & battery mounted in locking tool box
- 12 ton drop leg jack
- 10 ga floor
- 6x3x3/16 tube main frame
- Sealed beam lighting
- 7000 lbs per axle rating
- Electric brakes on both axle
- 16" tires on white spoked rims
- \$6400 U.S. delivered in Northeast U S A



Tilt & Load Trailer 10,000 to 14,000 lb. Capacity
Excellent for loading low riding equipment various lengths available.

- D C Hydraulic pump includes deep cycle marine battery mounted in toolbox
- 7000 lb. drop leg jack
- 3" channel cross members every 16" centre
- Pressure treated wood floor
- Sealed beam lighting
- Sand blasted, epoxie primed & painted
- 11 degree load angle on 24 ft trailer

BERKELMAN'S WELDING

RR 7, AYLMEER, ONTARIO, CANADA N5H 2R6
(519) 765-4230

- 1978 Int'l 1900, V8 gas, split rear, 18' encl box, runs/drives, **\$1,995/OBO**
 - 1985 Iveco Z220, cab/chassis, gd for parts, runs/drives, **\$650/OBO**
 - 1985 F250 4x4, 460, 4-spd, 4WD, runs/drives/insp, **\$1,500/OBO**
 - 1980 C30 Chevy dump trk, 350 4-spd, insp, **\$4,995/OBO**
 - 1983 T-Bird V-6 auto, air, cruise, tilt, AM/FM stereo, **\$1,995/OBO**
 - Weatherguard tool box & ladder rack, hvy dty, fits full size pick-up **\$375/OBO**
- 717-432-5108**

East Coast Trailers
Honesdale, PA • 570-729-8870

Pop Up Dove Tail Optional

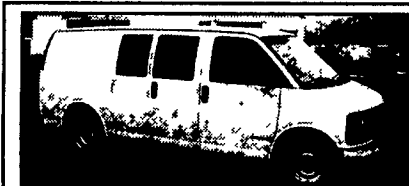
28' 25,500 lb. gooseneck, 102 wide, standup ramp, dove tail **\$5,750**
24' 14,000 lb. gooseneck, standup ramp, dove tail **\$3,700**

100 Trailers - All Sizes in Stock



2002 Nissan UD

w/14' Service/Van body w/Roll-up Rear door, Work Benches & Outside Tool Boxes, Auto Trans., PS, 14,000 GVW, AM/FM/CD. **\$34,749**



1999 CHEVY 1500 EXPRESS CARGO VAN, AT, A/C \$8,900

1997 Fruehauf Box Trailer
53 ft Long, 102 in Wide, 13 ft 6 in High, Translucent Roof

1995 Nissan UD 2600
Diesel, 25,950 GVW, 6-Spd, 18 Ft Van Body, 135,000 Miles
\$21,900 \$18,500

1991 Nissan UD
6-speed, 190 HP, 16ft Van Body
\$6,900 \$6,300

New 2003 UD Trucks In Stock
Stake Dump, Dry Freight Body

- Call for Details. Leasing & Financing Available.

INTERNATIONAL CENTRAL GARAGE, INC.

South 2nd St. (Rt. 419) Womelsdorf (Berks Co.) Pa.
610-589-4581 or 800-860-4581



01 FORD F350 CREW CAB DUALY,
Lariat 4x4, Power Stroke Diesel, AT, A/C, Most Options, Gold

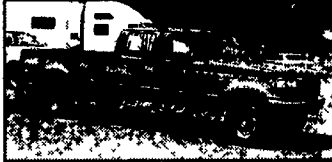


Bobby Gerhart's Truck World

2400 E. Cumberland St. Rt. 422 Lebanon, PA 17042

Mon. - Fri. 9-8, Sat. 9-3

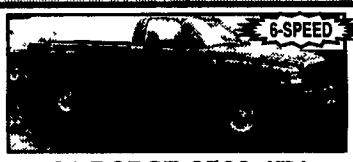
717-273-7995



95 FORD F350 CREW CAB
XLT, 4x4, Power Stroke Diesel, AT, A/C, Most Options, Blue & Silver



95 FORD F800 12 FT. DUMP
26K GVW, 370 V8, 5-Spd., 2-Spd Rear, 35K Miles, Red



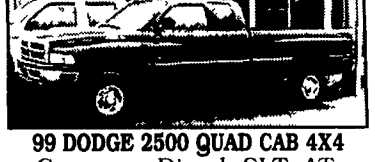
01 DODGE 2500 4X4
Cummins Diesel HD, 6-Spd., A/C, SLT, Most Options, 38K Miles, Red



98 FORD E-350 CARGO VAN
With Ladder Rack, Power Stroke Diesel, AT, A/C, 63K Miles, White
4 In Stock



95 DODGE 3500 4X4 12 Ft. Stake Body Dump
Pwr Angle Plow, 360 V8, 5-Spd, A/C, 85K Miles, White



99 DODGE 2500 QUAD CAB 4X4
Cummins Diesel, SLT AT, 33K Miles, Green #D384
2 In Stock



1997 FREIGHTLINER FL70, 220 HP 3126 CAT, 6-Spd., Hauler Conversion and Towing Pkg., **2001 HALLMARK** 40 ft., 102" wide TRAILER, Alum. Floor, 12 volt 110 Elect., Lots of Cabinets.



2000 FORD F350 CREW CAB DUALY 4x4, Power Stroke Diesel, 6-Spd., XLT, A/C, Most Options, 55K Miles, #F2064



99 CHEV. 3500 14 FT. CUBE VAN
AT, A/C, 350 V8, 67,000 Miles, White, #C642



99 FORD F450 10 FT. FLATBED DUMP
2WD, Power Stroke Diesel, AT, A/C, 75K Miles, Red #F2075



99 FORD F250 QUAD CAB
4x4 Lariat, CD Player, Power Stroke Diesel, AT, A/C, Most Options, 50K Miles
- 4 TO CHOOSE FROM -



2000 CHEVY 3500 HD
15000 GVW, Contractor Dump, 5 Spd, 454, 37,000 Mi.



00 CHEV 3500 WALK-IN UTILITY BODY
AT, A/C, C, T, 454 V8, White, 59K Miles



95 FORD F800 16 FT. STAKEBODY W/LIFTGATE
5 9-230HP Diesel 7 Spd, Only 33K Miles, 30K GVW, White



1995 CHEV TOPKICK DUMP
Allison AT, V8, 21,000 GVW White, Low Miles



97 FORD F350 10 FT. FLATBED 2WD, 5-Spd., 351 V8, A/C, 16K Miles, Red #F2076



2000 CHEV. 3500 CREW CAB 4x4
AT, 350 V8, A/C, Cass, 44,000 Miles, Ladder Rack, White, #C641



97 FORD SUPER DUTY XLT
17 Ft. Ramp Truck, Power Stroke Diesel, AT, A/C, Black \$10,995



99 FORD F350 CREW CAB DUALY 2WD
Power Stroke Diesel, AT, XLT, A/C, Most Options, 56K Miles, White



00 FORD F350 4X4 XLT
Power Stroke Diesel, AT, A/C Most Options, 42K Miles, White #F2079



96 INTERNATIONAL 4700 CAB/CHASSIS
LoPro T444E Diesel, 4 Spd., Allison AT, 145 WB, 84 CA, 21,000 GVW, A/C, 72K Miles, 2- To Choose From



96 FORD F350 CREW CAB DUALY- POWER STROKE DIESEL
2 WD, XLT, AT, A/C, Most Options, 94K Miles, Red



92 FORD F350 SUPER CAB DUALY-CENTURION
7.3 Diesel, AT, A/C, Most Options, 56K Miles, White, #F2035



99 GMC 3500 CREWCAB DUALY 9 FT. FLATBED w/Both Hitches, 454, AT, PS, PB, A/C, 29,000 Miles, White, Perfect Condition! #G233



00 FORD F250 4x4
Power Stroke Diesel, XLT, 6-Spd, A/C, Most Options, Only 40K Miles, Maroon