



Custom Stairs & Rail LLC
We build to your specs in all types of wood

Commercial - Residential
 ADA Compliant

- Box Stairs • Open Stairs • Curved Stairs •
- Stair Rail Parts & Accessories •

Call today for a free estimate

172 Christiana Pike • Christiana, PA 17509
Phone: (717) 871-0577 • Fax (717) 871-0578

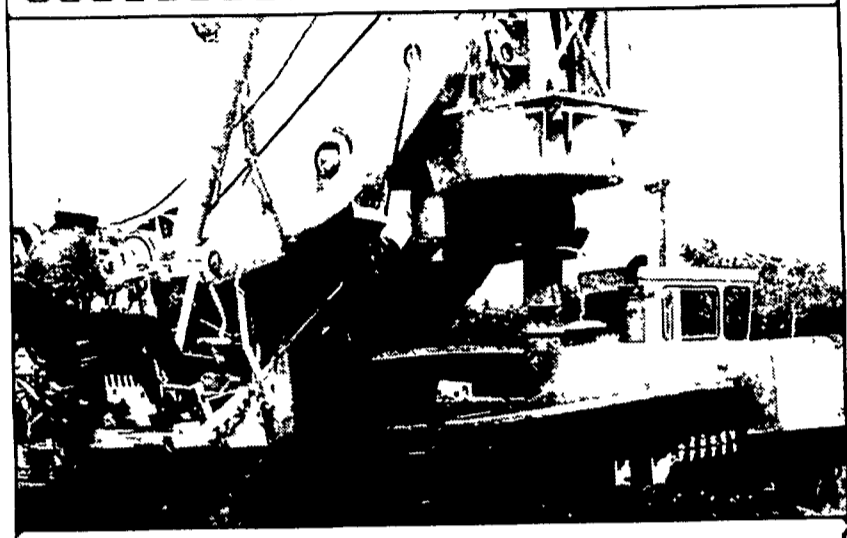


Daniel Lapp
 717-355-9813


DL TRUSS L.L.C.
 155 Jaly Drive
 New Holland, PA 17557
All Types of Quality Engineered Trusses

Rocky Ridge Construction
 Pole Barns, Horse Barns, Dairy
 Masonry and Concrete
 Agriculture and Residential.

Benuel K. Lapp
 Conoverville, PA
(610) 383-5047

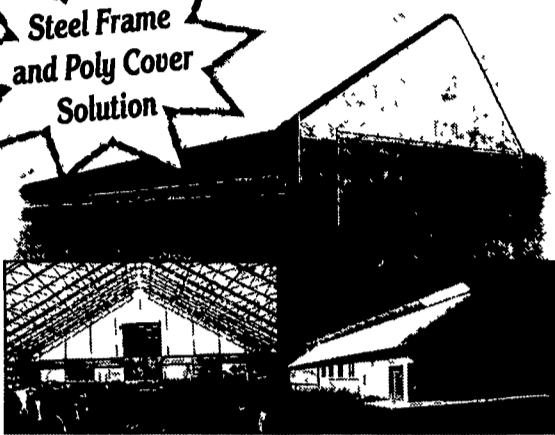


- HAMMER ROCK DRILLING UP TO 48" DIAMETER
- ROCK & DIRT DRILLING UP TO 10' DIAMETER
- POLE BARN BUILDING - DRILLING ROCK & DIRT
- NEXT DAY SERVICE - 24/7 PHONE SERVICE
- CAISSON CONSTRUCTION
- LIMITED ACCESS DRILLING
- RAILROAD DRILLING
- ESTABLISHED IN 1977



PRECISION DRILLING INC.
 PHONE (800)-691-9166 STOCKTON, NJ FAX (908)-996-7211

Regal Series Buildings

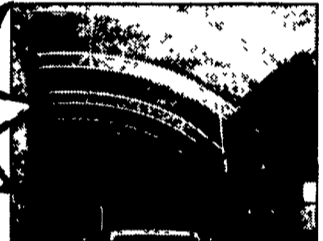


Steel Frame and Poly Cover Solution

- Any Width from 30' to 240'
- Professionally Engineered Steel Truss with Poly Cover
- Hot-dipped Galvanized Trusses
- Sectional Roof Covering for Economical Maintenance
- Ratchet Wheels are Used to Keep Each Section Tight
- Open Ridge Vent or Covered by an Overshot
- Overhang
- Many More Options

Helping you STRETCH into the Future with Tomorrow's Buildings at Today's Prices!

Sabre Series Shelters



Super SALE!
 38' x 80' \$6567
 38' x 100' \$8208

- 30' 38' 42' 50' and 65' wide
- 12.5 oz. Durable Poly Cover
- Square Tube Truss Design
- Powder Coated for Longer Life

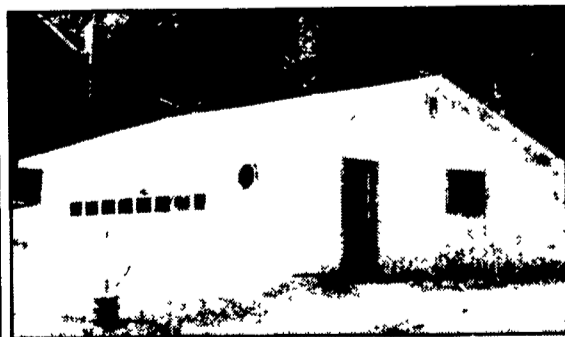
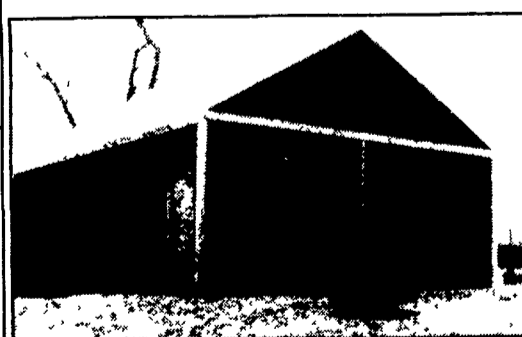
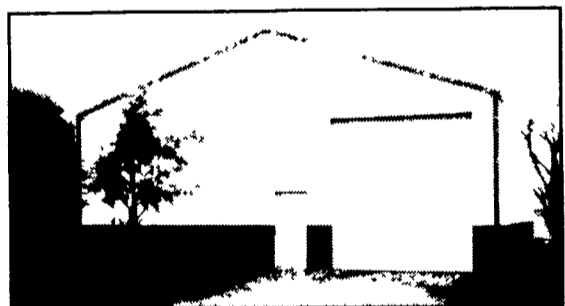
Hay Cattle Machinery Hogs, etc.

We Cover
 BUILDING SYSTEMS, L.L.C.
 John E. Weaver
 1-888-672-2213 • 1-570-672-2213

"Cover It Up for Profit"

- **30x50x12**
 • 2-10'w x 10'h garage doors
 • 1-3' entry door
\$13,250
- **40x60x12**
 • 1-12'w x 12'h sliding door
 • 1-10'w x 10'h garage door
 • 1-3' entry door
\$16,500
- **40x80x12**
 • 1-12' x 12'h sliding door
 • 1-10'w x 10'h garage door
 • 1-3' entry door
\$21,400
- **50x96x14**
 • 1-14'w x 14'h sliding door
 • 1-12'w x 12'h garage door
 • 1-3' entry door
\$28,400

• 40# per sq. ft. snow load on trusses
 • Financing Available
 • Call for free literature or see us at
 www.pioneerpolebuildings.com






P.P.B., Inc.
Can We Build One For You!

Stock Buildings

- **24x24x8**
 • 2-9'w x 7'h garage doors
 • 1-3' entry door
\$5,750
- **24x40x10**
 • 2-9'w x 8'h garage doors
 • 1-3' entry door
\$8,400
- **30x32x10**
 • 2-9'w x 8'h garage doors
 • 1-3' entry door
\$8,400
- **30x40x10**
 • 2-9'w x 8'h garage doors
 • 1-3' entry door
\$9,250
- **30x64x10**
 • 2-10'w x 10' sliding doors
 • 1-3' entry door
\$13,250

Prices included tax, delivery materials, and labor for construction.

Pioneer Pole Buildings, Inc.
 716 South Rt. 183, Schuylkill Haven, PA 17972
 Toll Free 1-888-448-2505 Fax 1-888-448-2515
 www.pioneerpolebuildings.com

- 35 year warranty Everlast painted steel (your choice of color on roof, sides, trim).
- Steel is G 100 painted and heat roll formed by Everlast Inc., the best known roofing made.