

Massey Ferguson 9790 Combine

Advanced Technology Boosts Capacity In New Massey Ferguson Combines

DULUTH, Ga. — New Massey Ferguson combines have increased harvest capacity over previous models thanks to advanced technology and design enhancements. The class VI MF 9690 and class VII MF 9790 combines feature improved fuel efficiency, more efficient and thorough grain threshing, greater visibility, and an enhanced cab environment. At the same time, combine operation and maintenance have become simpler, not more complex.

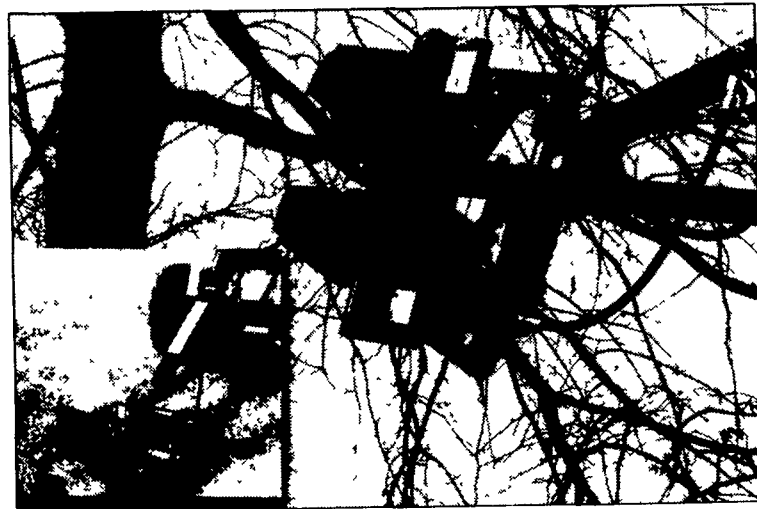
"The MF 9690 and MF 9790 are designed to adjust easily from one field to another or from one crop to another," said Tom Draper, general marketing manager, Massey Ferguson Harvesting Products. "In fact, our engineers work hard to create 'advanced simplicity' in every combine. That means fewer chains, fewer belts, fewer gearboxes, and fewer grease fittings than any other combine on the market. It also means superior harvesting capability and, with these machines, expanded har-

vest capacity." Expanded capacity is a result of design modifications to Massey Ferguson's advanced technology and harvest system. Improvements involved the front beater, the rotor, and grain cleaning system.

Massey's proven grain-friendly cascade system shakes, separates and gently drops grain from one pan to another. Here, a minor change to the angle of the cleaning shoe and motion of the sieves and bottom pans contributes to increased cleaning capacity.

Increased capacity in threshing and cleaning means more grain in the tank. Storage capacity on the new MF 9690 and MF 9790 has increased to 300 bushels with new larger grain tanks.

"Even a minor change in design can make the best system even better," said Draper. "We increased the productivity in these combines not by changing a proven and successful system, but simply by enhancing several components."



New Tree Clipper from Worksaver

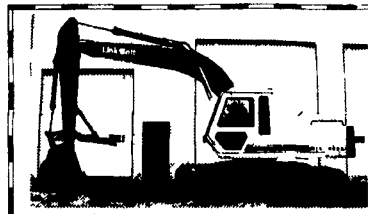
New Tree Clipper Simplifies Trimming Trees

LITCHFIELD, Ill. — The new Tree Clipper from Worksaver, Inc., solves the problem of trimming and cutting hard to reach tree branches or unwanted trees. It also eliminates the need to trim limbs with a chain saw from a loader bucket or ladder. The Tree Clipper can be mounted to either side of the main frame and provides excellent visibility.

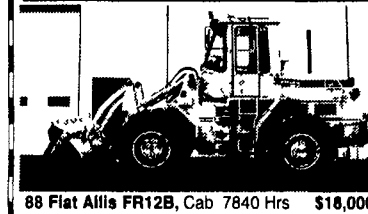
Designed for use with a tractor loader or a skid steer, the Tree Clipper features rugged welded steel frame construction while the cutting blades are built

from T-1 steel. Cutting head on the unit rotates 113°. Head rotor cylinder is 3"x10" and the cutting head cylinder is 5"x8".

The Tree Clipper is available in two models, Model TC8-FL and TC8-SS. Model TC8-FL is designed for use with a tractor loader and comes with standard pin type attachment brackets. This model requires a tractor with a minimum of 45 PTO HP. Front loader quick attach brackets are available. Model TC8-SS is designed for use with skid steers and uses a "universal" attachment system.



89 Link-Belt LS2800C II, 9900 Hrs, 32" Shoes, Thumb \$19,500
87 Hitachi EX200 CALL
87 Mid Yutani MD300, CALL



88 Fiat Allis FR12B, Cab 7840 Hrs \$18,000
90 Fiat Allis 645B, 6730 Hrs \$14,000
78 Fiat Allis 545B, Cab Good Tires \$13,000
81 Clark 35C, 4237 Hrs \$11,000



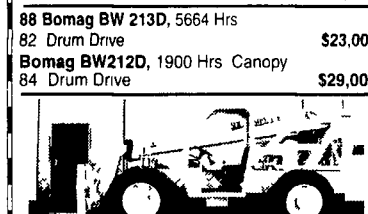
97 Mustang 2050, 1000 Hrs New Tires \$9,500
99 NH LX 485, Cab w/Heat 510 Hrs Tracks Tooth Bar \$11,900
98 Case 1840, 2830 Hrs 50% Tires \$8,900
98 Gehl 5635, 1105 Hrs 40% tires \$11,000



94 Hitachi EX120-3, Cab 5560 Hrs 28" Shoes Plumbed \$28,000
94 Hitachi EX120-3, 5550 Hrs 28 Shoes Plumbed \$28,000
93 Hitachi EX120-2, 4000 Hrs, AC 28" Shoes \$24,500



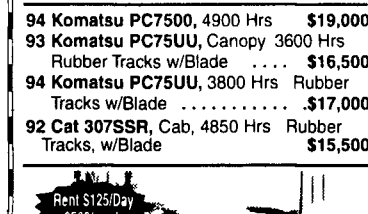
99 Case 580 Super L, Cab 2650 Hrs 4x4 Extendahoe Plumbed To Front \$32,000
95 Case 580 SL, Cab 4980 Hrs 4x4 Ext Hoe New Tires \$27,500



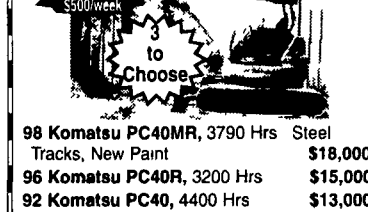
88 Bomag BW 213D, 5664 Hrs 82 Drum Drive \$23,000
Bomag BW212D, 1900 Hrs Canopy 84 Drum Drive \$29,000



97 Terex SS636, 1855 Hrs 6000 lb Lift \$27,000
94 Traverse 6035, 2835 Hrs Good Tires Call



98 Kobelco SK150LCIV, 7780 Hrs, 24 Shoes \$36,000
94 Komatsu PC7500, 4900 Hrs \$19,000
93 Komatsu PC7500, Canopy 3600 Hrs Rubber Tracks w/Blade \$16,500
94 Komatsu PC7500, 3800 Hrs Rubber Tracks w/Blade \$17,000
92 Cat 307SSR, Cab, 4850 Hrs Rubber Tracks, w/Blade \$15,500



98 Komatsu PC40MR, 3790 Hrs Steel Tracks, New Paint \$18,000
96 Komatsu PC40R, 3200 Hrs \$15,000
92 Komatsu PC40, 4400 Hrs \$13,000
Volvo 825B Articulated Truck 6x6 \$36,000
JCB 1550, Cab, 2WD, Std Hoe \$8,500
79 JD 850, OROPS, Angle Blade \$17,000



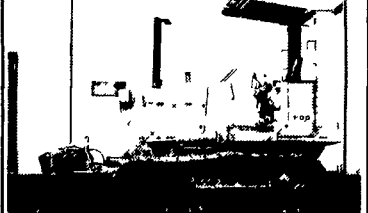
2000 Hitachi EX200-5, 2900 Hrs \$69,000



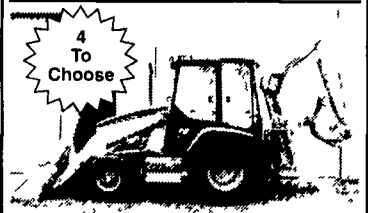
94 JD 570B, Cab 6900 Hrs 12 Moldboard 50% Tires CALL
88 JD 770BH, 7710 Hrs 14" Moldboard \$28,000



95 JD 544G TC, Cab 7180 Hrs JRB Quick Coupler 60" Forks & Bucket w/8 Teeth 35% Tires CALL

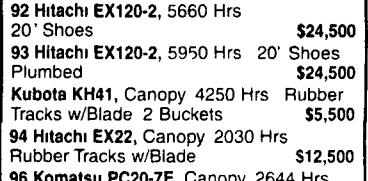


86 Fiat Allis FD5, OROPS 5000 Hrs 6-way Blade \$15,500
85 JD 450E, Canopy 4000 Hrs 6-way Blade \$19,500

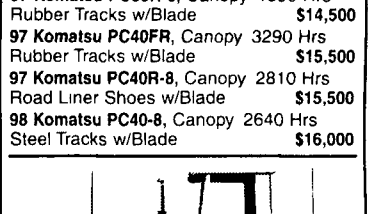


1998 Cat 416C, Cab 2275 Hrs 2WD Standard Hoe \$24,000

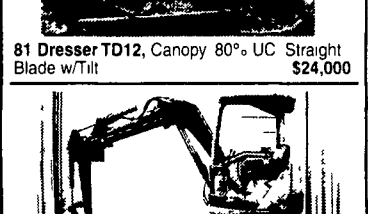
NEW ADDITIONS
95 Cat 963, Cab 50% UC 300 Hrs on New Cat Engine Call
99 Cat 416C Tool Carrier, Cab 4x4 Ext Hoe Call



92 Hitachi EX120-2, 5660 Hrs 20" Shoes \$24,500
93 Hitachi EX120-2, 5950 Hrs 20" Shoes Plumbed \$24,500
Kubota KH41, Canopy 4250 Hrs Rubber Tracks w/Blade 2 Buckets \$5,500
94 Hitachi EX22, Canopy 2030 Hrs Rubber Tracks w/Blade \$12,500
96 Komatsu PC20-7E, Canopy 2644 Hrs Rubber Tracks w/Blade \$12,500
96 Komatsu PC27R-8, Canopy 2990 Hrs Rubber Tracks w/Blade \$13,000
97 Komatsu PC35R-8, Canopy 1890 Hrs Rubber Tracks w/Blade \$14,500
97 Komatsu PC40FR, Canopy 3290 Hrs Rubber Tracks w/Blade \$15,500
97 Komatsu PC40R-8, Canopy 2810 Hrs Road Liner Shoes w/Blade \$15,500
98 Komatsu PC40-8, Canopy 2640 Hrs Steel Tracks w/Blade \$16,000

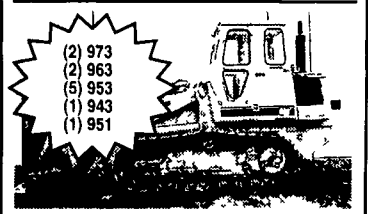


81 Dresser TD12, Canopy 80% UC Straight Blade w/Tilt \$24,000

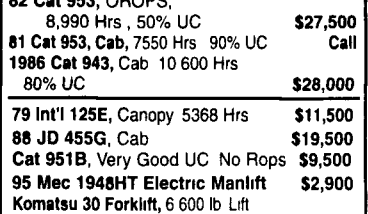


93 Komatsu PC280U, 3028 Hrs Rubber Tracks w/Blade \$9,500

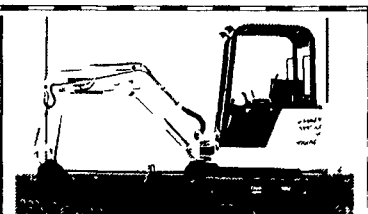
95 Chevy 3500 Service Truck, 6.5 Dsl \$8,900
88 Ford F350 Dually Mechanics Body, Crane Electric Lift Gate New Motor New Tires \$6,900



90 Cat 963, Cab 4400 Hrs New UC New Cutting Edge & Teeth \$42,500
90 Cat 953, Cab 50% UC \$37,000
'94 CAT 953B Cab 8360 Hrs 90% U/C New Paint \$65,000
82 Cat 953, OROPS, 8,990 Hrs, 50% UC \$27,500
81 Cat 953, Cab, 7550 Hrs 90% UC Call
1986 Cat 943, Cab 10 600 Hrs 80% UC \$28,000
79 Int'l 125E, Canopy 5368 Hrs \$11,500
88 JD 455G, Cab \$19,500
Cat 951B, Very Good UC No Rops \$9,500
95 Mec 1948HT Electric Manlift \$2,900
Komatsu 30 Forklift, 6 600 lb Lift Gas Eng \$7,000



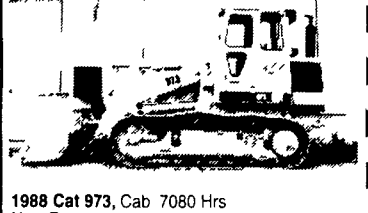
97 Cat 312B, Cab 4580 Hrs 20" Shoes New Paint \$39,500
96 Cat 312, AC, 5230 Hrs New Paint \$32,500
93 Cat 312, 5670 Hrs \$28,000
92 Cat 312, Cab AC 6200 Hrs Plumbed New Paint Call



97 Bobcat 325, Canopy 1675 Hrs Rubber Tracks w/Blade \$12,750



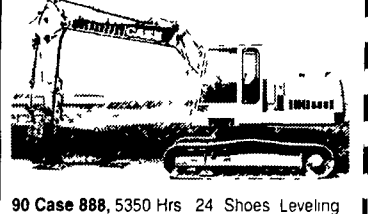
84 JD 350C, Canopy 4450 Hrs 80% UC Rebuilt Engine \$12,000



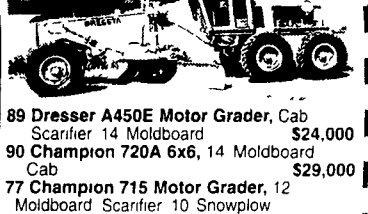
1988 Cat 973, Cab 7080 Hrs New Paint \$39,500
1986 Cat 973, New UC OROPS New Paint \$35,000
88 Cat D4H, Canopy 7320 Hrs 80% UC New Paint \$29,000



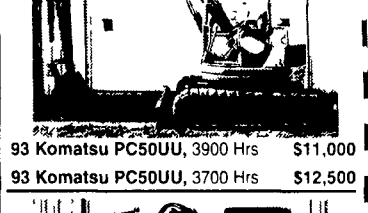
96 Ford 575D, Cab 4450 Hrs 4x4 Extendahoe \$23,500



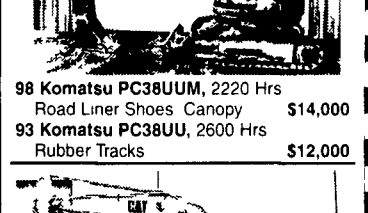
90 Case 888, 5350 Hrs 24 Shoes Leveling Kit Mechanical Thumb \$19,500



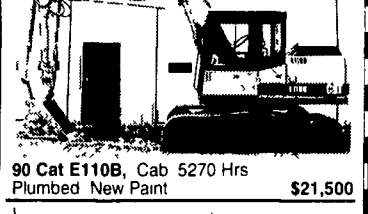
89 Dresser A450E Motor Grader, Cab Scarifier 14 Moldboard \$24,000
90 Champion 720A 6x6, 14 Moldboard Cab \$29,000
77 Champion 715 Motor Grader, 12 Moldboard Scarifier 10 Snowplow Good Tires \$9,500



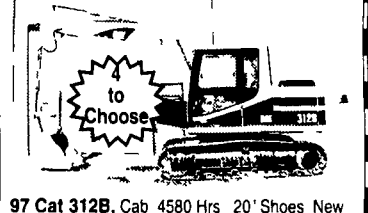
93 Komatsu PC50UU, 3900 Hrs \$11,000
93 Komatsu PC50UU, 3700 Hrs \$12,500



98 Komatsu PC380U, 2220 Hrs Road Liner Shoes Canopy \$14,000
93 Komatsu PC380U, 2600 Hrs Rubber Tracks \$12,000



90 Cat E110B, Cab 5270 Hrs Plumbed New Paint \$21,500



97 Cat 312B, Cab 4580 Hrs 20" Shoes New Paint \$39,500
96 Cat 312, AC, 5230 Hrs New Paint \$32,500
93 Cat 312, 5670 Hrs \$28,000
92 Cat 312, Cab AC 6200 Hrs Plumbed New Paint Call

Rentals Available Day, Week, or Month

Weaco Equipment

Financing and Lease Purchase Available No Sunday Calls

4009 Conrad Weiser Parkway, Womelsdorf, PA 19567

Located 4 Miles East Of Myerstown on Rt. 422

sales@weacoequipment.com

610/589-5555

Toll Free 877/529-9328